

ODKF

2001
2002

OUTRIGGER DUKE KAHANAMOKU FOUNDATION

President's Message

It's been a pleasure serving as the 2001-2002 President of the Outrigger Duke Kahanamoku Foundation, because, never have I seen such an active, hard working Board of Directors in any nonprofit organization. I hail it a banner year with outstanding accomplishments and unprecedented contributions received. ODKF Directors join me in thanking you for your time, interest and financial support.

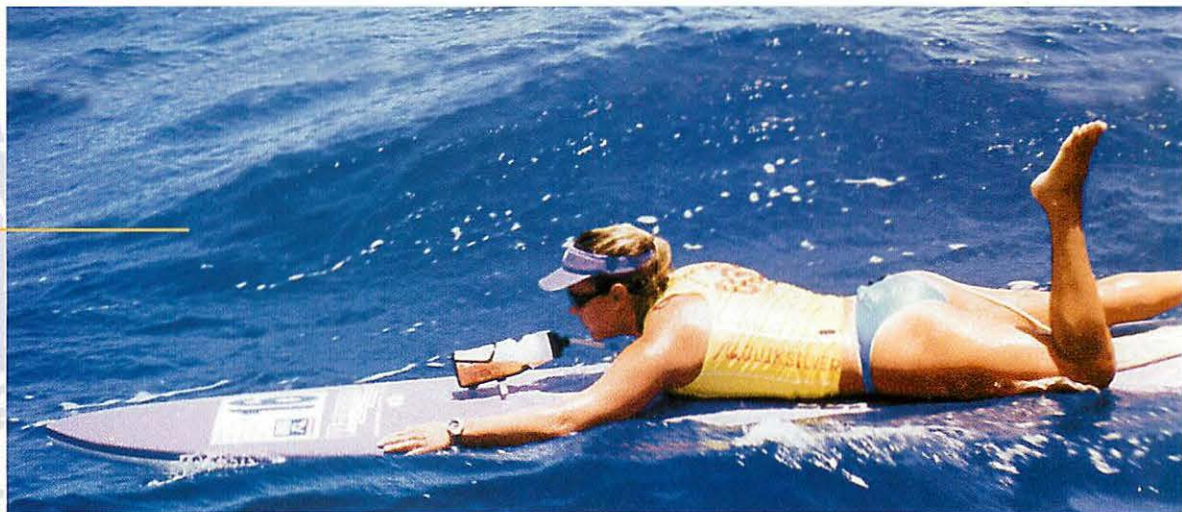
Kanesa Duncan received an athletic grant to participate in the 2002 Silver Edition Molokai to Oahu Paddleboard Race.

Kanesa was the first woman to cross the finish line as she completed the grueling 32-mile race in seven hours, eight minutes and five seconds (7:08:05).

Two major events for ODKF were supported by both community volunteers and Outrigger Canoe Club members. The first was in conjunction with the Boys and Girls Club, allowing 300 youngsters to participate in the "Duke's Sports and Fitness Day", a hands on educational day of sports activities. It was the support of the OCC Board and the expertise of the Club's athletes that made the event such a huge success. Also, many thanks to the chefs at Duke's Canoe Club who prepared a healthy and delicious luncheon for all to enjoy. And finally, thank you to Event Chair Liz Perry and all her volunteers

for helping us reach out to so many kids. In August, the second big event involved introduction of the Duke Paoa Kahanamoku commemorative stamp. A dedicated group of ODKF Board members joined with community volunteers to plan and execute the many aspects of a complex initiative. The goal of our involvement was to perpetuate the memory of Duke Paoa Kahanamoku as not only the greatest Hawaii water sports athlete of all time, but more importantly, a man whose dignity, values and conduct continue to set stan-

were sent "in memory of" or "in tribute to" individuals who were members of the OCC. Outrigger members continue to support ODKF with monthly pledges. We are very appreciative of the continued support. Our corporate benefactors this year include Malama Pono Inc. and its principal Don Love, who turned over royalty payments from TS Enterprises Inc. (Duke's Restaurants.) In addition, the staff of Duke's Waikiki helped prepare Duke stamp cachets, sold Duke t-shirts and gave us a dedicated new board member,



dards for athletes everywhere.

Getting back to business as usual, our grants and scholarships committee approved 62 grants for a total of \$56,085. We continue to help athletes participate in national and international competitions.

We are honored to manage the bequests for yet another great OCC athlete, Henry Ayau, whose passing greatly saddened the hearts of all watermen and women and to the extended communities to which he, like Duke, was the ambassador of aloha.

Contributions in excess of \$92,000 were received this year and many of those dollars

Chris Colgate.

Before closing, I want to again thank the OCC Board of Directors and Liaison Director Glenn Perry, for their encouragement and leadership. With your continued support, we can reach even higher levels of achievement with our youth programs, as well as continue to financially assist Hawai'i's many fine athletes and scholars.

A big mahalo to you all,

Mary Philpotts McGrath

Mary Philpotts McGrath

The Outrigger Duke Kahanamoku Foundation supports the Outrigger Canoe Club with grants to hold the Cline Mann Paddleboard Races and the Walter J. MacFarlane Regatta each summer.

OUTRIGGER DUKE KAHANAMOKU FOUNDATION

BOARD OF DIRECTORS

2002-2003

Gretchen Duplanty

—PRESIDENT

Sharon Brown

—VICE PRESIDENT

Elizabeth Perry

—VICE PRESIDENT

Jim Fulton

—SECRETARY

Tim Guard

—TREASURER

Mary Philpotts McGrath

—PAST PRESIDENT

Bruce S. Anderson

Gloria Garvey

Easton Manson

Ernest C. Moore, III

Wilmer C. Morris

Peter Nottage

Tay Perry

Edward Richardson

Keith J. Steiner

Foundation Administrative

Services provided by:

Projects Unlimited LLC

Mailing Address:

ODKF

P.O. Box 2498

Honolulu, Hawai'i 96804

Phone/Fax: (808) 526-4888

Website:

www.dukefoundation.org

GRANT RECIPIENTS FOR 2001-2002*

ATHLETIC GRANTS

Hawai'i Canoe Kayak Team
Hawai'i Swimming Club-Kahului
Hawaiian Island Twisters
Lae'ula O Kai
Lanikai Canoe Club
Marimed Foundation
Na Opio Canoe Racing Association
Outrigger Canoe Club
Outrigger Canoe Club
Pyramid Waveriders
Redwings Memorial Events
Redwings Memorial Events

Total for Teams - \$15,245

Canoe & Kayak Nationals (Gainesville, GA)
Long Course State Championships (Kailua)
USA Junior Olympic Regionals (Snoqualmie, WA)
Hawaiki Nui Va'a Competition (Tahiti)
Na Keiki O Na Wa'a (Kailua Bay)
Paddling and Voyaging Programs (Kaneohe Bay)
Toots Minville Invitational Race (Keehi Lagoon)
4th of July McFarlane Regatta (Waikiki)
Cline-Mann Paddleboard Races (Honolulu)
National Scholastic Surfing Competition (Dana Point, CA)
Paepo Board World Championships (Point Panic)
Web Site Expansion (Honolulu)

ATHLETIC GRANTS

Kekoa Auwae
Nathan Keoni Carroll
Billy Choi
Daniel Coakley
Kanesa Duncan
Crystal Dzigas
Mark Eckert
Mark Eckert
Keegan Edwards
Kainalu Froiseth
Kapono Nahina
Kaikakaokalani Nance
Erik Smith
Hongzhe Sun
Adrienne Vogel
Hoku Webb
Hoku Webb

Total for Individuals - \$11,840

Surfing: World Games (Durban, South Africa)
Surfing: World Games (Durban, South Africa)
Surfing: Pan American Championships (Margarita, Venezuela)
Swimming: Western Zone Championships (Los Angeles, CA)
Paddleboarding: Moloka'i to Oahu Paddleboard Race
Surfing: Women's World Longboard Championships (Costa Rica)
Swimming: Summer Senior Nationals (Fort Lauderdale, FL)
Swimming: Phillips 66 National Championships (Minneapolis, MN)
Surfing: ASP World Longboard Tour (Europe & South America)
Surfing: US Amateur Championships (Oceanside, CA)
Surfing: ASP World Longboard Tour (Europe & South America)
Paddling: World Sprints (Bora Bora)
Rodeo: National High School Finals (Farmington, NM)
Swimming: Phillips 66 National Championships (Minneapolis, MN)
Dance: Paul Taylor Summer Elite (New York, NY)
Surfing: 2001 & 2002 NSSA Events (Kauai, Maui, Big Island)
Surfing: Quicksilver Pro (Trestles, CA)

Waianae
Hale'iwa
Honolulu
Kapaa
Honolulu
Honolulu
Honolulu
Honolulu
Honolulu
Honolulu
Makaha
Waimanalo
Wailuku
Cpt. Cook
Honolulu
Hau'ula
Hale'iwa
Hale'iwa

SCHOLARSHIP GRANTS

Total \$24,000

Name
Keesha Aldridge
Paul Brewer
Brianna Castillo-Huang
Nick Christensen
Chelsea Converse
Teana Cramer
Jane-na DeMello
Kanani Dilcher
Myra Divina
Matthew Elm
Allegra Erisman
Meagan Fawcett
Kathleen Flanagan
Kori Haymore
Chelsea Kalama
Katie Lowry
Timothy Ming
Iris Moon
Matthew Moran
Leiana Moser-Reyes
Nika Nakamoto
Jessica Nohara
Nicole Okuna
Jennifer Ornellas
Chasity Pang
Melani Rawlins
Thomas Sanford
Nicole Shea
Kahealani Silva
Kristin Simunovich
Miria Whitford
Ryan Zabriskie

Sport
Volleyball
Water Polo
Water Polo
Kayaking
Crewing
Paddling
Paddling
Water Polo
Volleyball
Diving
Triathlon
Water Polo
Water Polo
Swimming
Crewing
Paddling
Swimming
Swimming
Swim/Water Polo
Swimming
Swimming
Volleyball
Volleyball
Softball
Swim/Water Polo
Swimming
Volleyball
Volleyball
Water Polo
Volleyball

High School
Aiea HS
Kahuku HS
Iolani HS
Punahou HS
St. Andrew's Priory
Kamehameha Schools
Castle HS
Punahou HS
Lanai HS
Kaiser HS
Home Schooled
Punahou HS
Punahou HS
Waiakea HS
Kamehameha Schools
Konawaena HS
Iolani HS
Hana HS
Waipahu HS
Kamehameha Schools
Kalani HS
Lahainaluna HS
Waiakea HS
Lana'i HS
Kohala HS
Moloka'i HS
Hawai'i Prep Academy
Lahainaluna HS
Hilo HS
Punahou HS
Kahuku HS
Punahou HS

College
CSU @ Dominguez Hills
BYU Hawai'i
Loyola Marymount
UH Manoa
Occidental College
USC
Chaminade University
U of Puget Sound
University of Nevada
U of Puget Sound
Leeward CC
UCLA
UCLA
Olin Engineering College
Loyola Marymount
San Diego Mesa College
Wheaton College
University of Victoria
Purdue University
Whitworth College
CSU @ Fresno
UH Manoa
Pepperdine University
Palomar College
Chaminade University
Hawai'i Pacific University
Dartmouth College
Hawai'i Pacific University
UH Hilo
Dartmouth College
UH Manoa
UC San Diego

SPECIAL GRANT

Total for Special Grants \$5,000

Boys and Girls Club

Duke Sport & Fitness Day Statewide

ANNUAL MAHALO LUNCHEON



Scholarship grantee Matt Elm received his award from ODKF President Mary Philpotts.



ODKF Grantees and Coach Tomey



Luncheon co-chair Sharon Brown announces the newly established Henry Ayau Fund.



Jasmyn Ikeno (left) represented the keiki of the Na Opio Canoe Racing Association. Teddi Anderson (right) is the President of the Adult Advisory Board for the organization.



Luncheon Co-chair Tim Guard hosts scholarship grantee Kanani Dilcher at his table. Kanani is in pre-med at University of Puget Sound, works as a lifeguard at the school's pool and volunteers at the Boys and Girls Club in Tacoma.



Coach Tomey exhorts ODKF grantees to "commit, focus and persevere."



Gerry DeBenedetti (left), Diane Stowall and Rob Farrow are fine examples of the volunteer support ODKF receives from Outrigger Canoe Club members.

Each year the Outrigger Duke Kahanamoku Foundation hosts a luncheon to honor its donors, grant recipients and volunteers. Eighty-two guests attended this year's luncheon on July 15 at the Outrigger Canoe Club.

Special guests included Mary Philpotts, Marilyn Haine, Allan Dowsett, Patti Mann Nottingham,

and Mrs. Terrence McCarthy. They represented the families who have established Board Designated Funds within the Foundation. (See article on page 4)

Grantee speakers were scholarship winners Timothy Ming (Wheaton College) and Miria Whitford (UH Manoa), along with Jasmyn Ikeno from Na Opio Canoe

Racing Association, one of this year's athletic grant recipients.

The featured guest speaker was former UH Football coach Dick Tomey.

Volunteers honored at this luncheon serve the Foundation in a variety of ways. They participate on the board, work on events like the Duke Sports and Fitness Day,

research and preserve Duke Kahanamoku history, review over 150 grant applications and attack a myriad of Foundation tasks with cheerful enthusiasm.

Congratulations to Event Chair Sharon Brown and Emcee Tim Guard for another successful Mahalo Luncheon.

ODKF COMMUNITY OUTREACH

Duke Sports Day

Over three hundred kids from Oahu's five Boys and Girls Clubs were treated to a unique outdoor experience on March 9, 2002 at Lanikuhonua. ODKF and OCC volunteers introduced the children to three of the Duke's favorite sports: paddling, surfing and volleyball. Special teacher/mentors included paddler Walter Guild, surfer Hoku Webb, volleyball stars Stein Metzger and Tory Tupuafu.

A happy youngster from the Ewa Beach Boys & Girls Club wrote to say, "Mahalo nui loa for thinking of and making such a wonderful thing for us kids. Duke Kahanamoku was a wonderful person and dedicating something like this in his name, I just would say that if I were him, I would be very happy. Thank you for letting us come to Duke Sports Day."

(1) Youngsters learn the importance of teamwork as they concentrate on synchronizing their paddling strokes. (2) Duke's Canoe Club Waikiki prepares lunch for the children and volunteers. (3) Event co-chairs Keith Steiner and Liz Perry enjoy a well-deserved break from Duke Sports Day activities. (4) ODKF Board Member Bill Morris calls his "troops" to rally around him as they prepare to move to the next sports activity.



1



3



2



4

Duke Paoa Kahanamoku Ho'olaulea

ODKF board members Jim Fulton and Gretchen Duplanty spearheaded the Duke Ho'olaulea which celebrated the unveiling of the Duke Paoa Kahanamoku postage stamp on August 24, 2002 on the beach at the Hilton Hawaiian Village. Partnering with the U.S. Postal Service and several community organizations, the Stamp Planning Committee produced a ceremony which followed strict Hawaiian protocol and was attended by Kahanamoku family members, Hawai'i congressional delegates and several hundred spectators.

(1) U.S. Senator Daniel Akaka (right) and Emcee Danny Kaleikini flank the newly unveiled stamp. Senator Akaka was instrumental in getting the Duke commemorative stamp approved by the U.S. Postal Service. (2) The blowing of conch shells herald the arrival of the Hawai'i Loa voyaging canoe which carried the Duke stamp from Honolulu Harbor to Waikiki. (3) U.S. Senator Daniel Inouye and the late U.S. Representative Patsy Mink enjoy the day's celebration. This was one of Rep Mink's last public appearances. (4) Renowned canoe navigator Nainoa Thompson and the Honorable Robert F. Rider, Chairman of the U.S. Postal Service Board of Governors, carefully carry the stamp (under red veil) ashore.



1



2



3



4



Erik Smith



Hawai'i Island
Twisters



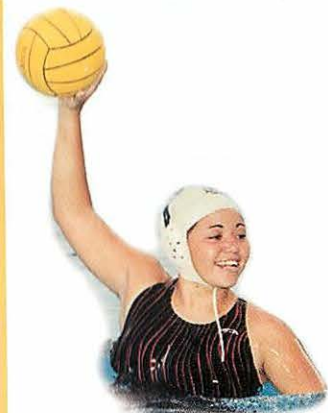
Hawai'i Swimming
Club-Kahului



Allegra Erisman, a sophomore at Leeward Community College, completed the Jamba Juice Mountain Man Triathlon in 1:56:01, placing first in her 15-19 age group. Allegra is a straight A student with pharmacology as her tentative major.



Nicole Okuna
"Thank you so much for offering such a wonderful program. The money will be used towards a lap top computer for all those road trip swim meets."



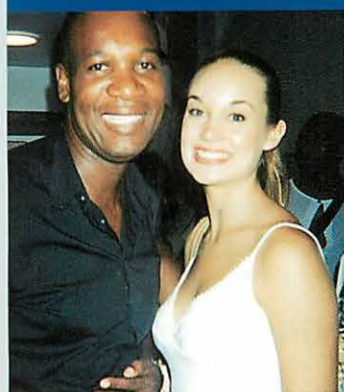
Miria Makana Whitford
UH Rainbow Wahine Water Polo Team



Marimed/Kailana Sailing and Paddling Program
Though an ODKF grant, they will be getting new iako and ama which will help make their canoes safe enough to compete in open ocean regattas.

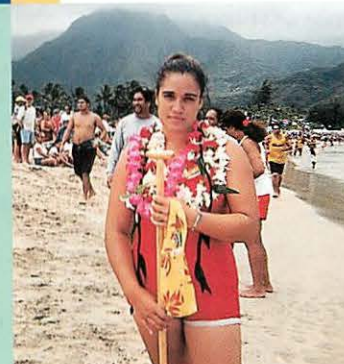
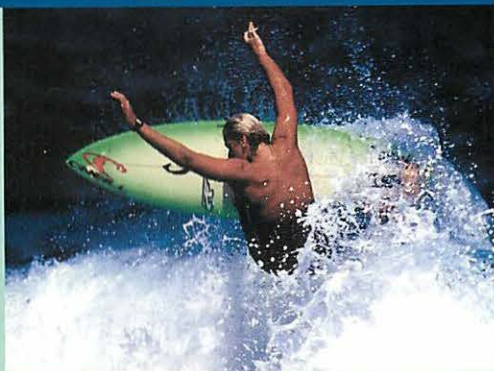


Brianne Castillo-Huang



Adrienne Vogel and Afro-Caribbean dance teacher Peter London. "Hello from the Big Apple! The instructors at Alvin Ailey are exceptional. I'm dancing everyday from 9-5. Thank you so much; I wouldn't be here without your help!"

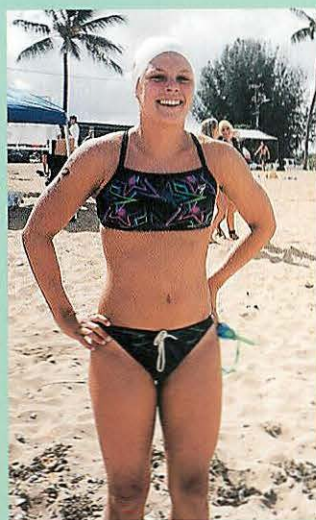
Nathan Carroll of Sunset Beach won the prestigious open men's surfing division of the USSF championships at Oceanside CA. Carroll, 17, is a home-school senior.



Jane-na DeMello



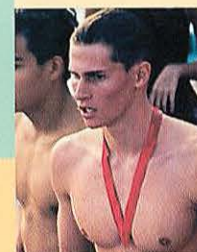
Chelsea Mele Kalama



Kristin Simunovich



Jessica Nohara
"I am on UH swim team. I'm meeting new people and getting the chance to compete with girls from all over the country. I will be going on my first road trip to UC Irvine. I'm busy but don't worry my studies are not suffering. I am required to do 8 hours of study hall each week as a student athlete so I definitely keep up with my school work."



Tom Sanford
Dartmouth Men's Swimming Team



Leiana Moser-Reyes
"I will be receiving my bachelors degree of psychology (Whitworth College) in May 2003. I would like to be a child psychologist. I will continue to teach swimming throughout my career. Thank you so much for helping me get this far!"



Na Opio Canoe Racing Association
Students from Keahiakahoe pray before their competition in the Toots Miniville Invitational Race.

THE PURPOSE

the Outrigger Duke Kahanamoku Foundation is to financially support the development of individuals and organizations that perpetuate the spirit and legacy of Duke Kahanamoku. • ODKF accomplishes this by encouraging athletes and scholars whose endeavors will contribute to the growth and development of athletics in Hawai'i; supporting athletic events and participation by teams and individuals in local, national and international competition; supporting individuals in furthering their education; and assisting in preserving, perpetuating and developing sports which have a special cultural or historical significance to Hawai'i.

BOARD DESIGNATED FUNDS

There are seven ODKF Board Designated Funds.

Muriel Macfarlane Flanders Fund: established by Muriel Flanders to support water sports in Hawai'i, to perpetuate the Macfarlane Fourth of July Regatta, and to honor the accomplishments of Duke Paoa Kahanamoku.

Terrence McCarthy Fund: established by Terrence McCarthy in memory of her husband Edmond McCarthy, who firmly believed in the combination of athletic participation and education. Mrs. McCarthy honors her husband by supporting Hawai'i's top scholar athletes.

Tom "Daddy" Haine Fund: established by the Board of Directors in 1994, funds support and develop the sport of volleyball in Hawai'i. Haine was the captain of the 1968 U.S.

Olympic men's volleyball team. He was an 18-time USVBA All-American and in 1991 was inducted into the U.S. Volleyball Hall of Fame. He was a member of the original Outrigger Foundation that later merged with the Duke Kahanamoku Foundation to form ODKF.

Kala Kukea Fund: established by the Board of Directors in 1996 and named for Kala Kukea who was one of Hawai'i's top overall water sportsman. Kukea touched the lives of many young athletes in his short 52 years of life. He was an outstanding competitor, coach and role model. In 1996 he posthumously received the Hawaiian Canoe Racing Association John DeRego Perpetual trophy for service to the Association and to the Molokai/Oahu canoe race.

Cline Mann Fund: named for John Cline Mann, a superb water sportsman who died in 1996. He was captain of

his Dartmouth College swimming team, an avid small boat sailor, and a strong promoter of paddleboard racing. Grants from this fund help to support the annual Cline Mann Paddleboard Race. Cline Mann was also a member of the original Board of Directors of the Duke Kahanamoku Foundation (DKF) that was founded in 1963. He then played an instrumental role in the merger of DKF and the Outrigger Foundation to create the present Outrigger Duke Kahanamoku Foundation (ODKF).

Thomas Arnott Fund: established by Marian Arnott in loving memory of her husband who was a great supporter of both OCC and ODKF. Tommy Arnott, a masterful surfer, was also recognized for competing in canoe races with Duke Kahanamoku. As teammates they beat all their competition in the early 1940's. Consequently this fund will support interscholastic

canoe paddling in Hawai'i.

Henry Ayau Fund: established this year by the Ayau Family to honor this renowned athlete and his legacy. A "Molokai Boy," Henry excelled in life as a businessman, sportsman and community minded citizen. An exceptional athlete, Henry was a noted baseball player, canoe paddler, and world-class free diver. Many thought of him as the modern day "Ambassador of Aloha." Henry's untimely death this year left us with a heavy heart but with our lives enriched by his smile, good nature and enduring Hawaiian spirit.

ODKF awards grants to athletes, teams, scholar-athletes and sporting events in the name of the above listed funds. We thank the individuals and families who have made these grants possible.



GOLD MEDALISTS

The Gold Medalist program began in 1990 as a way to acknowledge those who have contributed \$1,000 or more to ODKF in a given year.

We are pleased to announce there were twenty Gold Medalists for the 2001-2002 year. (See page 7 for a list of these top donors.)

Gold Medalists receive a gold medal replica of Duke Kahanamoku as a token of the Foundation's appreciation. They are also honored at the annual Mahalo Luncheon.

OUTRIGGER DUKE KAHANAMOKU FOUNDATION LEVEL OF INCOME & GIVING

Year is from Oct-Sep	Change in Net Assets	Net Assets	Scholarships	Athletic Grants	Total Giving
1986-87	* 56,930	246,334	—	1,880	1,880
1987-88	11,808	258,142	2,000	7,068	9,068
1988-89	26,928	285,070	6,000	4,300	10,300
1989-90	74,647	359,717	10,000	10,700	20,700
1990-91	80,223	439,940	10,000	9,361	19,361
1991-92	37,488	477,428	10,000	26,500	(1)36,500
1992-93	25,191	^ 502,619	12,000	15,550	27,550
1993-94	40,549	567,263	12,000	20,500	32,500
1994-95	144,225	711,488	12,000	23,500	35,500
1995-96	5,433	706,055	18,000	31,000	(2)49,000
1996-97	49,131	755,186	18,000	18,950	36,950
1997-98	<59,355>	695,831	19,000	31,000	50,000
1998-99	65,584	761,415	16,000	25,500	41,500
1999-00	117,07	878,490	19,000	20,200	39,200
2000-01	<57,109>	821,38	17,00	(3)57,50	74,500
2001-02	17,360	~838,741	24,000	32,085	56,085
			\$205,000 234 scholarships	\$310,594 teams & individuals	\$515,594

* on 12/31/86

^ prior to 93/94 investments were carried at cost.

In 93/94 changed to carrying investments at market value: beginning endowment was increased by \$24,095 to \$526,714.

~unaudited

(1) increased for 1992 Olympics

(2) increased for 1996 Olympics-includes \$10,000 from the OCC-ODKF Olympic Fund

(3) includes \$25,000 special grant to Boys and Girls Club for volleyball courts

MAHALO TO OUR DONORS

October 1, 2001 - September 30, 2002

Donors are listed by total gifts given. Giving levels include gifts-in-kind as well as cash donations. ODKF's fiscal year is from October 1 to September 30. Gifts in honor of someone or in memoriam are indicated by a (#) after the donor's name. The names which correspond with each (#) are found in the "Gifts in Memory of" list below. Every effort was made to ensure the accuracy of the information presented here. We apologize for any errors and ask that you bring them to our attention. Thank you.

SUPER GOLD MEDALISTS Donors of \$5,000 or more

Muriel M Flanders
J Ward Russell, Jr. Trust
Henry Stotsenberg

GOLD MEDALISTS Donors of \$1,000 or more

Jeanne A Anderson 160
Wendy Crabb 165
Don Ho's Island Grill 165
Fritz & Mary Lee Duda
Dean A Eyre, Jr.
Frederick Fong, MD
Cynthia Foster 46, 80
James & Priscilla Gowney 151
Tim Guard
Doug & Ronny Kilpatrick III
Mary Philpotts McGrath 151
Donald Monroe, Sr.
Ernest C Moore, III
Hideo & Noriko Okamoto
Keith Steiner
Thurston & Sharon Twigg-Smith 155
Vikram & Tanya Watumull

SILVER MEDALISTS Donors of \$500 to \$999

Lionel & Aphrodite Banks
Joan S Bellinger
Reginald & June Chambers 169
John Finney 165
Mrs. David W Hearst 47
Easton Manson
Robert & Jean Marchant
Nora Meijide
Michael and Laura Miller
Lorraine Mussett 155
Peter & Lois Nottage
Oahu Hawaiian Canoe Racing Association
Catherine Payne 67
Karen Perkins
Mahealani Riley 165
Jean E. Rolles
John & Louise Stevenson
Shery Vann 165
Ernest & Nina Weber

BRONZE MEDALISTS Donors of \$100 to \$499

Lana Alamillo 165
Anne Anderson 81
Robert Anderson, Jr.
June R Anderson
Lynn Apo 19
Cynthia Arnett 165
Marian Arnett 109
Janet Atkins
Ronnie & Marjorie Ayau 165
Nancy M Bannick 168
Clint & Mildred Basler 109
John Beaton
Ruth Ann Becker 2
Betty W Becker

Nalani Bickson
Shay Bintliff, MD 80
Anita Brightman
Stan Brown 1, 127
Mark & Margaret Burgessporter
Richard & Jean Callahan
Anita Carlisle
Karen Kay Carlson
Lorraine L Cassidy
Benjamin & Suzanne Cassidy
Paul R Cassidy
M G Chillingworth 174
Henry B Clark, Jr.
Tom & Ricci Conger 46
George Correia
Monte & Mazepa Costa 168
Carolyn M Craig 154, 175
Wendell De Freitas 165
Bob Dewitz
Jeffrey C Dinsmore
George James & John Dinsmore
James E Dorsey 115
Donald F Dorward 161
Peter G Drewliner 155, 165

Elizabeth Dunford
Thad & Patricia Ekstrand 165
Donald Evovino 165
Kimberly Evans
Thyrza P Eyre
William & Faith Bright 19, 127
Kela Fisher
RADM John R. Fisher, USN (Ret)
Ada J Forbes
Michael Fox 1
Steve Foytich 140
Gloria Garvey and Mark Harrington
Kent Giles
Marguerite Gilpin
Gigi Glover 165
John Goody
Geoffrey Graf
Elizabeth Greenway 165
Martha & Jimmie Greenwell 155
Maylien W Grosjean 111
Robert and Alice Guild
Walter Guild
Colleen Keane Haig 136
Marilyn Van Dyke Haine 163, 165, 166, 168, 170, 171

E Doanie Hare
David & Nery Heenan
Janet M Henderson
Fay Ann Hill
Margaret Adams Hogan 168
Robert Hogan, Jr.
Robert Holmes 165
Lyle Hosoda 165
A Peter Howell
Claire Hughes 168
Cecily Johnston 165
Bonnie Judd
Mary Ray Kahanamoku
Kamaaina Prosthetic Dental Laboratory 165
William and Irene Kea 151
Mary Keegan
Drs. Charles & Jennifer Kelley

Kialoa Canoe Paddles 19
Ralph Kiewit, Jr.
Mary W. Kimball
Thomas & M. Kosasa
Carol L Kukea Hauff 19
Thomas K Lalakea
Joel Lawson, Jr.
Dennis M. Lee 155
Mrs. Robert Little
Gilbert Livingston 126
Paul & Violet Loo Fund
Fred Lowrey 151
Duncan MacNaughton
Robert B Maguire
John Marabella
Jay & Amber Marumoto
Tom May - David May II Foundation
Michael McCormack
Fred C McGrew
Jimmy and Kelly McMahon 168
Dorothy K McMillan
Dean McPhail
Fred & Grace Merritt 19, 20, 76
Hoyt B Miles, MD 78
Ernest & Fay Morgado 109
Wilmer and Jane Morris
Donald Nicol
Susan E O'Connor
Emil & Patricia Offer 150, 169
Robert & Catherine Ostrem
Linda Payes 165
Cynthia Pearson
Christie L Peck 1
Tay Perry
David T. Pietsch, Jr.
James & Ann Pietsch
Michael Pietsch
David J Porteus 1
William David Pratt 1, 19
Lenore Prehler
Kelly Preston
George Rafael
Peggy Richards
Pauline E. Seto
Richardson 19
Doug Rigg 1
Charles & Jeanne Robertson
Robert & Nancy Rocheleau 19
Robert & Harriet Rotz
Nicholas Rutgers, Jr.
Peter Sansevero 1
Michael Schwin 155
James C Shingle
Barton Siegfried, III 46
Caro Jones Simon
John and Kitty Simonds 164
Roger N Smith
Barbara J. Smith
Doris J Smith 36
Robert & Bonnie Smolenski
Edwin & Cynthia Sorenson
John Spierling 103
David Sprowl
St. Louis School 165
Jo Starr 159
Cynthia Stehouser 165
Scott & Donna Sullivan 19
Muriel Sutherland
Tiffany Sutherland 173
Harriet Tegart
Joe Teipel
Sue Tetmeyer
Ernest H Thomas

Bob, Ginger & Crystal Thornburg
Lawrence K W Tseu, MD
Tim & Maggie Twigg-Smith
Eric Von Platen
Robert Watland 165
Eric Welton
Gaylord H Wilcox
Col Alexander Wilson, USMC Ret. 149
Frank & Antoinette Young

COMPETITOR Donors of \$1 to \$99

Helen Abreu 165
William Alderman 165
Anonymous
Anonymous
Anonymous
Anonymous 165
Austin, Tsutsumi & Associates
Valerie Ayau 165
Ben Baldwin
Sachi Braden 165
Charles & Carol Brede
Balbi Brooks 151
Linda Brown 165
Mark Buck 165
John and Susan Bustard
John Butler
Buyhawaii.com Inc. 165
David & Laurretta Callies 165
Linda Carlson 165
CFS Hawai'i 165
Ann Chapman
Harry Chillingworth 165
Walter Connelly
Margaret Shirley Connors
Robert Corbo
Christopher & Paula Crabb
Thomas Damon 165
Margaret Danford
Jack Diehl
Paul & Gail Dolan 168
David & Hope Doyle
Agenhart & Dorie Ellis
Dolan Eversole 165
George L Fawcner
Tia Fergusson
Donald Fowler 165
Mary Jo Freshley
Hadley Gaffney
S. Bradley & Loreen Granger 165
Thornton and Ann Guild
Marjorie M Guy 155
William Haig 165
George and Robyn Hara 165
Melveta Ann Hardy 165
Lana Harrison 165
Lani Hearn
Charles & Susan Heitzman
Fred Hemmings 27, 145
Bee McBryde Henderson
Harold E Henderson
Jim Heumann 1
Jack Hinds 1, 46
Norman Ho 165
Dale Hope 46
Sumner Howard 165
Howard Iaea 165
Lani Iala 165
Neal & Ruby Iversen 155
Helena & Harrison Ishida 165

Sarah Mann Judd 46
Joan Kaaua
Kanoa Inc. 165
Stewart Kawakami
Enid Kelly
Maureen Kilcoyne 168
John & Carolyn Lacy 165
William Latchford
Glenn Lau 165
Sylvia & Duane Lee 165
Lambert Lee Loy 165
Douglas and Linda LeGrande
Christie Letman
George & Joanne Loomis 155
Cameron Coble
Maheras 165
Stanley and Robin Markle 165
Mr. & Mrs. Watters
Martin, Jr.
Daniel & Liana McInerney 46
Sara McKay-Hines and Jim 167
Paul & Malia Mendonca 165
Donna Meyer 158, 176
Franklyn & Katherine Meyer
Robert & Evanita Midkiff
John D. Monnett
Patricia Moore 165
John & Christine Morgan 165
Ann Moriyasu 151
Sharon K Mowat
Lois Young Nelson 165
Barbara C Norfleet 165
George & Patricia Nottingham 46
OCC Duplicate Bridge Club
Joan Osborne
Robert & Adele Ostrem 162, 169
Douglas & Maile Ostrem 165
Charles & Gerri Pedesky
Jessica Peppler 165
Robert B. Posey
Joan C Pratt 165
Promed Inc. 165
Evan Rhodes 46
Eleanor Richardson
David Rietow
Pamela Rigg 165
Ralph Rogers, Jr.
Patricia Rose
Virginia H. Rowan
Alan Rowan
Randy & Aloha Sanborn
Piilani Schneider 165
Ames Scott
Kelsey Sears 165
John Semenza
John & Alice Serrao
Kristine Smith
Cynthia Spencer 165
Tita Stack
Betsy Staller 165
Juliette Stanchfield 165
Raymond Starbuck
Ken & Barbara Stehouwer
Conne Sutherland 165
Kristen Mahealani Sutton 165
William & Shirley Swasey 155
Mark & Brenda Szasz 165

Carlyn Tani 151
Barbara B. Tilley
Beverly S K Tom
Hank & Alma Tonini
Bonnie & Michael A. Town 156
Jack L Vaughan 138
Thomas & Addie Vesey 157
Cecilia Webster
Rodney West
Dwight & Cindi White-Yanaga
Meade D Wildrick 31
Lynne M. Wooddell 168
Donald & Dorothea Woodrum
Wayne & Ruby Yabiku
J. Tek & U'ilani Yoon 165
William and Nancy Yopp

Gifts in Memory of:

1 Thomas Haine
2 Thomas Holmes
19 Kala Kukea
20 Ethel Kukea
27 Fred Swartz
31 Anne Wildrick
36 Gary Vietsch
46 John Cline Mann
47 David Hearst, Sr.
67 Phoebe Gedge
76 Joseph Kukea
78 Duke Kahanamoku
80 Rell Sunn
81 Marion Senger
103 Charles J. Pietsch, J
109 Thomas M Arnett
111 Robert H Grosjean
115 Camilla Dorsey
126 Mary Lou Livingston
127 John Beaumont Jr.
136 Lisa Rigg
138 Barbara M Vaughan
140 Tracy Crabb
145 Fred Hemmings Sr
149 Sue Hulick
150 Kim McVay
151 Ward Russell
154 Joan M. McKenzie
155 Thomas O'Brien
158 Bob Meyer
159 Allan Starr
160 Leo J. Wilson
161 J. Zook Todd
162 Robert Rotz
163 Suzie Cassidy
164 Eva Enomoto Muller
165 Henry Ayau
166 Clay Benham
167 Raeyanna Mae Rousseau
168 Eugenia McMahon
169 Sterling "Pat" Muller
170 Ryan Huemann
171 Jack Hinds
173 Marion Lyman-Mersereau
174 Robert H. Witten
175 Charles A. Brede, Jr
176 Jack Wyatt

Gifts in Tribute to

156 Tommy Damon & Heather Moore
157 All Prior Members

FINANCIAL REPORT

The financial statements for the ODKF as of and for the year ended September 30, 2001, were reviewed by Pricewaterhouse-Coopers. These financial statements are available to our members by request.

At the foundation's annual meeting on October 23, 2002, a report was made on the foundation's un-audited financial results for the fiscal year ending September 30, 2002. These financial statements are now being reviewed by Pricewaterhouse-Coopers. When that review is completed in January 2003, they will be available to members by request.

Foundation income came

from donors who specify an amount be charged to their OCC account, as well as those who make cash contributions.

Additional funds were raised through the sale of tee shirts at the annual Walter J. Macfarlane Canoe Regatta, activities connected to the Duke Kahanamoku Ho'olaulea and royalty payments from Malama Pono.

Scholarship grants for the year totaled \$24,000; athletic grants for the year totaled \$27,085; and a special grant of \$5,000 was made to the Boys and Girls Club.

If you would like additional financial information please contact any member of the Board of Directors.

	UNREVIEWED 2002	AUDIT REVIEWED FIGURES	
		2001	2000
INCOME			
Donations/Pledges	\$97,880	\$74,613	\$83,463
Investments	<\$69,888>	<\$78,313>	\$41,358
Tee Shirt Fund Raiser	\$4,262	\$4,268	\$5,521
Royalties	\$72,000	\$71,373	\$74,358
Duke Ho'olaulea	\$25,018		
EXPENSES			
Scholarships &			
Athletic Grants	\$56,085	\$74,500	\$38,700
Admin & Fundraising	\$55,827	\$54,489	\$49,025
NET ASSETS			
AT END OF YEAR	\$838,741	\$821,381	\$878,490

Applications for Athletic and Scholarship Grants

Athletic Grants and Scholarship Grants

There are two types of grants made by the Foundation.

Athletic grants are usually for a specific purpose such as tournaments or competitions. Grants may be awarded to an individual, team or organization.

Athletic grant applications are accepted at any time throughout the year. **Scholarship grants** are given to athletes in need of assistance in pursuing post high school education. Applications are accepted from January 1 to March 15 of each year. Previous scholarship recipients must reapply for their grant annually.

Scholarship and Grant requirements:

Applicant must:

Be a resident of Hawai'i and an American citizen
Participate in competitive sports
Demonstrate financial need

Applicant must submit:

A personal letter of intention
A list of competitive sports and awards
A letter from an athletic coach or trainer

Federal tax return (or parents' if claimed as a dependent)

A recent photo, preferably an athletic action shot

In addition, Scholarship Grant applicants must:

Plan to attend an accredited college as a full time student
Submit a transcript of grades
Submit two letters of reference

In addition, Athletic Grant applicants or teams must:

Describe their training program
Describe their history of previous competitions
Provide results of competitions with records and times
Provide their history in the event

If you would like to receive an Athletic Grant or Scholarship Grant Application, call ODKF at (808) 526-4888 and leave your name, phone number and mailing address. Please specify which type of application you are requesting.

You may also download an application from www.dukefoundation.org

JOIN THE ODKF OHANA

The Board of Directors cordially invites you to become a donor to the OUTRIGGER DUKE KAHANAMOKU FOUNDATION.

You can help Hawaii's top athletes receive the assistance they need to reach their full potential while emulating the outstanding qualities of Duke Paoa Kahanamoku.

I A C C E P T T H E I N V I T A T I O N !

() My gift of \$_____ is enclosed

() I am a member of the Outrigger Canoe Club.

Please add \$_____ per month to my OCC statement in support of ODKF

OCC # _____

Signature _____

Print name _____

You may designate your donation as a memorial gift.

In memory of: _____

Or you may designate your donation be applied to one or more of our Board Designated Funds: MCCARTHY, MACFARLANE, KUKEA, HAINE, CLINE MANN, ARNOTT, AYAU (circle one or more)

Mail to: ODKF
P O BOX 2498
Honolulu HI 96804