

Advertiser photos by Carl Vit

Waikiki Surf Club (front) inches out Lanikai in the finals of the freshmen men in one of the day's better races.

Hui Nalu no ka oi

Outrigger's canoe grip is broken

By Dayton Morinaga

Advertiser Staff Writer

LAHAINA, Maui — A year-long process came to its culmination yesterday as Hui Nalu overthrew the Outrigger Canoe Club, 137-127, to claim the Hawaiian Canoe Racing Association State Championship at Hanakao Beach on Maui.

Hui Nalu's victory ended a nine-year reign of canoe royalty as state champions for Outrigger.

"What makes this state championship so unique is that it came from the heart," said Hui Nalu head coach Sammy 'Steamboat' Mokuahi Jr. "I came into this club two years ago and told them that we didn't have to rebuild. We could do it . . . and today we proved that."

Throughout 1993, in fact, Hui Nalu proved it. The Hawaii Kai-based club won every regatta during the Oahu Hawaiian Canoe Racing Association season, leaving yesterday's event as its final proving ground. The 25 crews Hui Nalu entered in the 31-race regatta stepped up to the challenge.

Early on, the Hui Nalu women provided a jump start. During one stretch, four of Hui Nalu's female crews — the girls 16, 18, women novice B and A teams — strung together consecutive first-place finishes. Those teams accounted for 36 of Hui Nalu's points.

"Today, I would have to congratulate our girls," Mokuahi said. "They came back strong. They took care of business all year and they did it again."

Rachel Shapland, a 16-year-old Punahou School student, raced in the winning crews of both the girls 16 and 18 divisions. She raced in the 16s during the season, but was called up



Hui Nalu's women's Novice A team defended their title. From left: Maile Chong, Anne Fuller, Denise Young, Michelle Campillo, Donnie Ono, Julie Nurre.

as a last minute replacement in the 18s.

"I knew I would be doing it a couple of days ago," she said. "I'm tired but we won so I shouldn't complain."

Hui Nalu took a seemingly com-

manding 90-43 advantage over both Outrigger and the Hawaiian Canoe Club of Maui at the midway point. However, after winning nine

See Canoes, Page C6

Canoes: Hui Nalu no ka oi

FROM PAGE C1

straight state titles, Outrigger refused to wave the white towel. Led by first-place finishes by its sophomore women and senior master women, Outrigger narrowed the gap to nine, 120-111, with four races remaining.

But in the second-to-the-last race of the day, the Hui Nalu masters women — spurred by a pre-race pep talk by Mokuahi — finished three seconds ahead of Napili and 15 seconds ahead of Outrigger to all but clinch the championship.

"No one came out and told us we had to win, but we knew inside what we had to do," said B.J. Namba, a member of the winning masters women crew.

Prior to the race, Namba said a few Hui Nalu members may have been feeling the pressure of Outrigger's comeback. Mokuahi decided to put the challenge to his club.

"When our senior master women got DQ'd (disqualified for a lane violation), we all kind of were like 'oh, oh,'" Namba said. "But just prior to our race, Sammy got everybody together and pumped everybody up."

Said Mokuahi: "I told them, we've been in this situation before. We rose before, we have to rise again."

Although Outrigger's masters men would win the final race of the day, the overthrow was complete. There were new kings in the Islands.

"Ever since I've been here, Outrigger was the one to shoot for," said Namba, an eight-year veteran of Hui Nalu. "We finally did it."

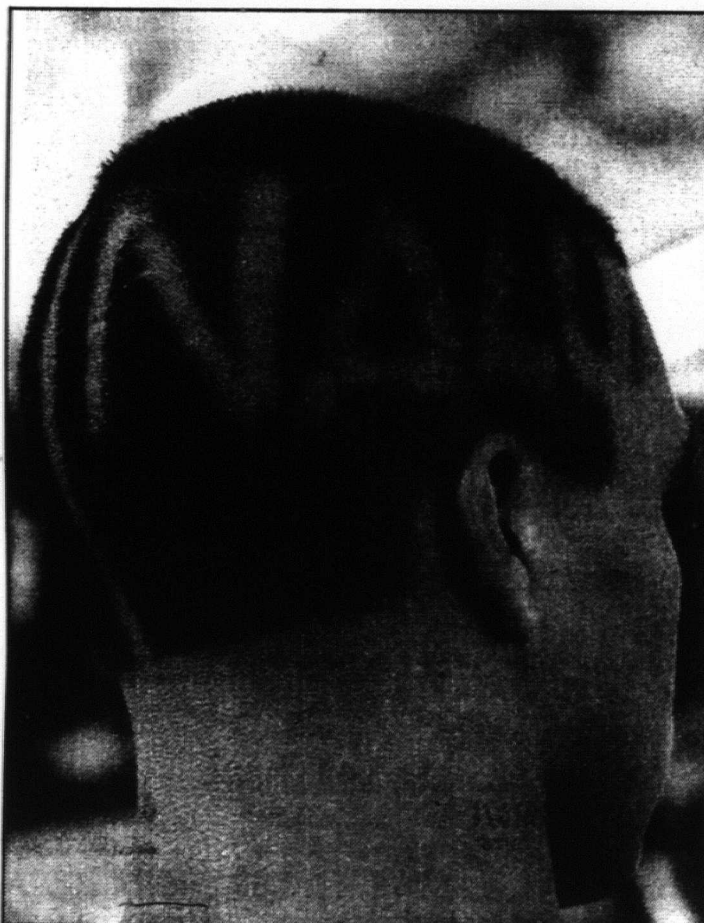
The championship was the first for Hui Nalu since 1983 — the last year before the Outrigger winning streak.

Di Guild, head coach of Outrigger, refused to express disappointment in her club's second-place finish. "It had to end sometime," she said. "I'm real proud of this club. We fought all the way down to the end."

And next year, she proclaimed, the new kings of canoe paddling will have a huge target on their backs.

"Don't take anything away from Hui Nalu," she said. "They're tough and they're going to be tough for a while. But now we have something to shoot for."

Hawaiian Canoe Club was third with 84 points followed by Kailua (82), Kai Opua (77), Hanalei (66), Lanikai (62) and



Advertiser photo by Carl Viti
Hui Nalu paddler Koa Pedro trimmed his hair for the occasion, with Hui on the left side of his head and Nalu on the other.

Lokahi (59). Napili of Maui won the AA division (for clubs entering between seven and 14 crews), followed by Healani (43). Waikiki Surf Club won the A division (six crews or less).

At Hanakao Beach, Maui

Team points

AAA Division—1, Hui Nalu, 137. 2, Outrigger, 127. 3, Hawaiian (Maui), 84. 4, Kailua, 82. 5, Kai Opua, 77. 6, Hanalei, 66. 7, Lanikai, 62. 8, Lokahi, 59. 9, Na Kai Ewalo, 15.

AA Division—1, Napili, 45. 2, Healani, 43. 3, Kaiola, 40. 4, Hui Lanakila, 30. 5, Keauhou O Kona, 27. 6, Na Keiki O Ka Mo'i, 17. 7, Kai E Hittu, 12. 8, Kawaihae, 7.

A Division—1, Waikiki Surf Club, 28. 2, Puna, 25. 3, Anuenue, 17. 4 (tie), Kamehameha (Oahu), Waimanalo, 15. 6 (tie), Lahaina, Kamehameha (Hawaii), 13. 9, Kai Oni, 12. 10 (tie), Kahana, Leeward Kai, 12. Pu'uwai, 9. 13, Ho'opili, 8. 14 (tie), Kona Athletics Club, Windward Kai, Koolau, 6. 17, Waikiki Beach Boys, 4. 18 (tie), Queen Liliuokalani, Waikiki Yacht Club, 3. 20 (tie), Lae Ua O Kai, Hui Na Pookela, Koa Kai, 1.

Special event

1/4-mile

1, Hui Waa (Hartwell Afong, Demaine Flores, Mac Kananapi, James Soto, Jay Soto, Raleigh Loando), 1:53.59. 2, Outrigger, 2:00.09. 3, Waikiki Surf Club, 2:07.67.

FEMALE

1/4-mile

12—1, Hanalei (Joya Poor, Tanzy Padg-

ett, Sara Meek, Malia Estrella, Bridgett Mulahy, Tani Goodrich), 2:00.92. 2, Hawaiian (Maui), 2:02.18. 3, Napili, 2:02.68. 13-1, Kai Oni (Kehaulani Young, Angie Souza, Erin Kamiyama, Christine Sala, Kama Richard, Rochelle Krun), 2:00.72. 2, Hui Nalu, 2:00.94. 3, Na Kai Ewalo, 2:01.15. 14—1, Na Keiki O Ka Mo'i (Kawehi Campbell, Keola San Nicolas, Ray-Joy Knell, Phoebe Inigo, Jenine Chang, Chariss Chan), 1:54.31. 2, Lanikai, 1:55.20. 3, Pu'uwai, 1:56.39.

Novice B—1, Hui Nalu (Jennifer Jackson, Keri Davison, Susan Imamura, Julie Wessel, Carol Winward, Natalie Au), 1:48.84. 2, Healani, 1:52.34. 3, Hawaiian (Maui), 1:53.10.

1/2-mile

16—1, Hui Nalu (Rachel Shapland, Tiare Wright, Lara Grimm, Shannon Higa, Summer Young, Erin Masaki), 4:20.35. 2, Lanikai, 4:23.00. 3, Outrigger, 4:25.61. 18—1, Hui Nalu (Kathy Colin, Rachel Shapland, Cinnamon Komorowski, Dalybeth Kadala, Carey Robinson, Laura Tam), 4:22.84. 2, Outrigger, 4:23.93. 3, Keauhou O Kona, 4:24.98. **Novice A**—1, Hui Nalu (Michelle Campillo, Donnie Ono, Julie Nune, Maile Chong, Anne Fuller, Denise Young), 4:14.82. 2, Lokahi, 4:17.19. 3, Kai E Hittu, 4:18.22.

Senior Masters—1, Outrigger (Gerri Pedesky, Diane Stowell, Margaret Danford, Patricia Mowat, Bernice Cromwell, Kanuenu Rochlen), 4:34.82. 2, Kai Opua, 4:41.96. 3, Hawaiian (Maui), 4:52.37. **Open 4—1**, Hanalei (Tammy Smith, Kathy Curtis, Marcia

King, Kainoa Forrest), 4:26.94. 2, Puna, 4:42.34. 3, Kamehameha (Hawaii), 4:44.05.

1 mile

Freshmen—1, Hui Lanakila (Ellen Bredberg, Jennifer Thompson, Vi Coito, Jennifer Love, Christina Thomas, Suzette Smith), 8:22.68. 2, Outrigger, 8:23.51. 3, Lokahi, 8:23.94. **Sophomore**—1, Outrigger (Nicole Wilcox, Donna Kahakui, Sara Ackerman, Cathy Ho, Malia Kamisugi, Kisi Haine), 7:54.05. 2, Hui Nalu, 8:00.29. 3, Kailua, 8:13.93.

1 1/2 mile

Senior—1, Hui Nalu (Jenny Fisher, Nina Pacewicz, Sandy Combis, Cathrine Fuller, Allison Drake, Denise Darval-Chang), 12:19.07. 2, Outrigger, 12:25.22. 3, Napili, 12:41.72.

MALE

1/4-mile

12—1, Waimanalo (Troy Kaleleiki, Clayton Kane, John Kauhole, Thomas Ohia, Leonard Sano, Josuah Kaakua), 1:52.55. 2, Kaiola, 1:54.47. 3, Hanalei, 1:56.37. 13—1, Puna (Berni Balsis, Earlsen Kaniaupio, Isaac Frazer, Ian Williamsen, Matt Malinowski, Dallas O'Shaughnessy), 1:44.18. 2, Kaiola, 1:44.49. 3, Kailua, 1:45.29. 14—1, Kamehameha (Oahu), 1:42.89. 2, Hanalei, 1:43.29. 3, Healani, 1:43.83.

1/2-mile

Men novice B—1, Hui Nalu (Bart Hopkins, Rich Davison, Trey Lacey, Jim Winand, Eric Sabo, Bob Nelson), 3:37.61. 2, Anuenue, 3:42.73. 3, Hawaiian (Maui), 3:44.07. 16—1, Lokahi (Jared Young, Mark Muramoto, Denton Pang, Jon Duarte, Spencer Chun, Robert Gerwig), 3:50.13. 2, Ho'opili, 3:53.73. 3, Hui Nalu, 3:56.59. **Senior Masters**—1, Hanalei (Steve Baker, Nick Beck, Skip Forrest, Murphy Caragna, Rex Burrell, Gaylord Wilcox), 3:47.39. 2, Kailua, 3:49.22. 3, Kai Opua, 3:53.90. **Open 4**—1, Kai Opua (Albert "Dutch" Bento, Steve Boreri, Evan Hanson, Bruce Ayau), 3:51.66. 2, Keauhou O Kona, 3:52.33. 3, Hanalei, 3:52.72.

1 mile

Novice A—1, Outrigger (Kawika Fairbanks, Todd Harrison, Gunner Schull, Brad Pearson, Steve Zak, Kalani Schrader), 7:07.00. 2, Hawaiian (Maui), 7:08.48. 3, Hui Nalu, 7:13.82. 18—1, Lokahi (A.J. Kumukoa, Jon Duarte, Sky Spindt, Jeremy Cole, Denton Pang, Bernard Mokuahi), 7:36.39. 2, Outrigger, 7:37.25. 3, Hui Nalu, 7:38.92. **Freshmen**—1, Waikiki Surf Club (Tim Trigg-Smith, Brett Neptul, Jim Benton, Curt Cattrell, John Chang, Blair Norris), 7:07.05. 2, Lanikai, 7:07.29. 3, Lokahi, 7:14.29.

1 1/2 mile

Sophomore—1, Lanikai (Michael Pederson, Todd Hart, Kalani Irvine, Paul Graham, Michael Smith, James Foti), 10:44.93. 2, Outrigger, 10:45.16. 3, Hui Nalu, 11:20.43. **Juniors**—1, Lanikai (Michael Pederson, Rich Lambert, Vince Olds, Cory Mehau, Jay Ford, John Foti), 11:12.97. 2, Outrigger, 11:29.21. 3, Kai Opua, 11:41.69.

2 miles

Senior—1, Lanikai (Jason Dambacher, Rich Lambert, John Foti, Kalani Irvine, Todd Hart, James Foti), 14:25.75. 2, Outrigger, 14:25.00. 3, Kai Opua, 14:51.77.

MIXED

1/4-mile

12—1, Napili (Grace Kanemitsu, Mason Panis, Joseph Bento, Eva Braman, Corina Kaluhiwa, Franki Ramirez), 1:58.19. 2, Honolulu, 2:01.90. 3, Waimanalo, 2:02.48.

1/2-mile

Masters: 1, Hanalei (Lock Eggers, Jeff McBride, Julie Leong, Mary Ellen Houston, Di Thomas, Keola Sheehan), 4:01.50. 2, Hui Nalu, 4:03.57. 3, Kona Athletic Club, 4:09.20. **Mixed Men/Women**: 1, Kai Opua (Jeanne Knapp, Peaches Springer, Julie Ross, Kyle Yonderian, Tim McCandless, Chris Comejo), 3:58.69. 2, Keauhou O Kona, 4:01.08. 3, Koolau, 4:02.41.

