

the Outrigger

APRIL 1996



1996 OCC Annual Meeting

President Wendell Brooks Jr. presided over the Annual Meeting of the Outrigger Canoe Club on February 26, 1996 in the Main Dining Room.

More than 100 members were present, with 492 casting proxies.

The minutes of the 1995 Annual Meeting were approved.

Reports were given by the various officers and chairmen. Edited versions of the reports follow.

The Historical Committee recommended two individuals for Life Membership—William Barnhart and John Cline Mann. They were unanimously approved. See story on pages 8-9.

In his remarks at the end of the meeting, President Brooks said, "The reports of the various committees really cover the activities of the Club. Many have mentioned the change in management. If I had to single out the one event during the last year that was the most important, I would pick the employment of our new General Manager, John Rader.

"The selection process was handled through an Ad Hoc Committee with Operations Vice President Tim Guard, Barbara Stehouwer, John Pyle, Mark Buck and Glenn Perry. They were aided by our CPA firm, PKF Hawaii, which also engages in hotel and club executive recruiting. PKF was able to give us national exposure in the search process to which we had 99 responses.

"PKF and the committee systematically culled through the applications and developed a short list. Interviews were conducted and two very highly qualified candidates made the final cut. John was the Board's choice. John has done a great job during the short time that he has been with us. As president I usually get complaints, but I'm pleased to report that a large number of you have told me how pleased you are with the Board's selection.

New General Manager John Rader was introduced and applauded for the improvements that have taken place at the Club since his arrival.

"I know that many of you are interested in the status of our discussions with our neighbors regarding the purchase of the land under the Club," Brooks continued. "I am sorry to report that there has been no progress and the near term prospects are not encouraging.

"The Outrigger has a long term lease and I have to believe that in due course we will be able to work out a fair agreement. That time may be several years away. In the mean time we have no choice but to be patient."

Also discussed was the Board's recent revision of the no-smoking policy.

President Brooks remarked, "As I believe most of you know, the Board recently approved a modification to the Club's no-smoking policy.

"By a majority, the board voted to provide more of an accommodation to the members who smoke by providing an area in the Ewa makai corner of the Hau Terrace.

"The Board is well aware of most, if not all, of the arguments on both sides of the issue. We know about smoker's health hazards, second hand smoke and the conflict of individual

rights each side espouses.

"Listening to the debate, it is my sense that some who voted for the accommodation voted because they are themselves smokers.

"On the other hand, there were some who I believe voted in favor of the accommodation because they felt that the Club has lost much needed revenue in the Dining Room by not accommodating smokers in some reasonable way. And finally, there were probably some who voted for a more accommodating smoking area simply as a compromise for a segment of our membership.

"Under the Bylaws it is the Board's duty to make these calls, but at the same time, the board needs your input."

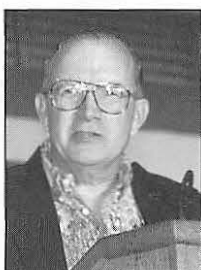
Two members, Gerry DeBenedetti and Diane Ackerman, spoke against the revised policy.

"Let me conclude the President's report by thanking all of you, the board, the employees and most of all, my wife Gloria for the support I have received during this past year. It has been a truly memorable experience for me."

At the conclusion of the reports, member Babe Woollett asked the Board to consider more handicapped parking spaces in the garage. ☺

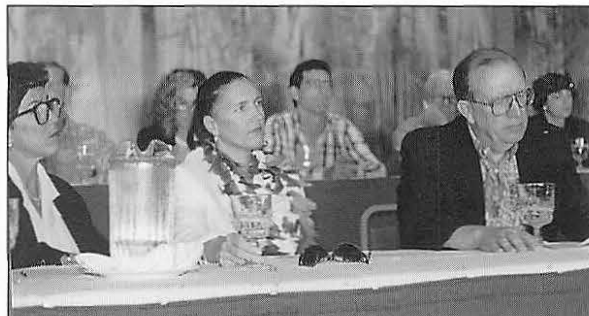


Members of the executive staff were introduced—General Manager John Rader, Controller Gordon Smith, Executive Secretary Patti Higuchi, Chef Manfred Pirscher, Clubhouse Manager Don Kub, Hau Terrace Manager Chris Huber and Food and Beverage Manager Don Figueira.



President Wendell Brooks addresses annual meeting.

Board members listen to committee reports.



Election Results

The Judges of Election Committee met on Sunday, February 25 in accordance with Section 9 of the Club's Bylaws and determined that the following nominees were duly elected to the Board of Directors for the two year term 1996-97:

Liz Perry	Mark Buck
Robert Moore	Karl Heyer IV
Hal Henderson	Joyce Timpson

The Committee would like to congratulate the members who were elected and would also like to commend those members who were nominated but were not elected.

A total of 974 ballots were cast. Of these, 24 were invalid because they were unsigned, the voter was delinquent in Club accounts, or they voted for more than six nominees. This left 950 valid ballots as compared with 994 in last year's election.

Ballots were mailed to 1,854 members entitled to vote. These include Regular, Intermediate, Senior and Life members. ☺



Babe Woollett asks for more handicap parking spaces.

Treasurer's Report (including the unspent mini charge)

By Brant Ackerman

1995 has been a very important year of transition for the Outrigger Canoe Club. The sluggish condition of the state's economy placed severe pressure on the Club's operations as it influenced the spending habits of our members.

Managing the Club and its financial activities has become a very complex task. As a result, the Board initiated significant changes to insure the Outrigger's future financial health. In addition to managing the Building Fund and capital improvement fund investments (now over \$7.5 million), the Finance Committee was assigned additional tasks which included the overseeing of the annual audit; monitoring the Pension Plan and related investments; and conducting a complete review of our insurance portfolio focusing on our flood and hurricane coverage.

Late this year, the Club hired a new general manager and executive chef. Currently, they are busy overhauling the food and beverage operation, scrutinizing the menu, prices, food cost, and inventory control to insure members have the best "value for price" received with the highest level of "member satisfaction."

This year, the Club fell short of meeting a break even goal in the Food and Beverage operation

by \$47,636. The total Food and Beverage loss was \$101,403 while the unspent mini-charge was \$53,767. The unspent mini-charge decreased by \$9,000 as a result of increased membership spending over the previous year.

The Outrigger's Food and Beverage operation compared very favorably with Hawaii, Far West, and All City clubs with a departmental loss of 1.6% of sales, compared to 5.7% for Hawaii clubs and 3.1% for Far West and All City clubs. As an added incentive in attaining Club goals and objectives, the Board initiated an Executive Bonus Plan.

Dues and Net Investment income to cover Unallocated Cost, Fixed Cost, and Depreciation, fell short of goal by \$37,287. As a result, the Board approved a 3.4% dues increase. All locker fees increased slightly as well.

It is important to note that the current Depreciation charge is \$378,280. Repair and Maintenance expenses were \$273,252, an increase over last year by over 10%. \$311,183 was spent on capital expenditures. Net operating income was -\$35,417.

As the Club approaches its 30-year mark, it will be necessary to continue to replace and refurbish various areas within the Club by an amount that approximates the annual

Depreciation of \$400,000. Due to the operational shortfall, the Club spent less on capital expenditures than planned. Future capital improvements are planned for the Bar and Lounge and Lobby.

Failure to recognize the need to strategically budget annually for ongoing capital improvement requirements has plagued many other Hawaii and mainland clubs as they now face huge multi-million dollar capital improvement costs with no funds available. With the completion of the four Clubhouse projects in 1994-95, and those scheduled in 1996-97, the Outrigger is on track with its capital improvement requirements.

Operational performance will dictate the pace of that activity. Also, this year the Board will be developing a formal Capital Improvements Budgeting system which addresses mid-range and long term requirements as well as any unplanned or unforeseen expenditures.

Athletics incurred expenses of \$151,447 or 2.4% which was within their budget. Their continued independent fundraising efforts have contributed greatly toward supporting their activities.

The Club collected \$435,900 in initiation fees and had a net Building Fund income of \$382,320 for a total of \$782,803. This generated an increase in members' equity of 7.4% to \$11,340,591. The goal is to reach \$16 million by the year 2006 when

the lease renegotiation takes place.

Due to a Financial Accounting Standards

Board change for Certain Investments Held by Not-For-Profit Organizations, Building Fund investments will be carried at Market Value rather than Book Value. This change will have a positive effect of \$506,670.

The biggest variable affecting the constant infusion of new capital into the Building Fund is initiation fees. However, we must carefully monitor an ongoing trend occurring over the last few years—fewer people are applying for Club membership.

Today the lead time for new member processing is down from three years to five months. This alarming trend appears to be occurring at other Hawaii clubs which may be directly related to the state of Hawaii's economy. But if the Outrigger is unable to recruit new members to meet attrition and secure new revenue sources, this will undoubtedly result in a material affect on the annual infusion into the Building Fund.

The 1995 Financial Statements are available at the Controller's office for your review. ☐



Admissions and Membership Committee Report

By Thomas S. Merrill, Chair

The Admissions and Membership Committee reviewed the applications for, interviewed and recommended to your Board of Directors the admission of some 167 new members to the Club. A more detailed breakdown of the Club's membership by membership category as of December 31, 1995 follows:

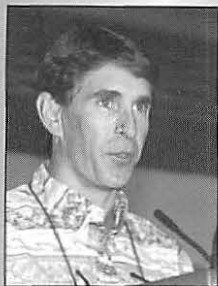
	1/31/95	12/31/95
Life	11	9
Senior	319	317
Regular	1,374	1,360
Intermediate	173	159
Associate (parent members)	69	58
Associate (parent non-members)	72	75
Associate—Spouse	181	177
Junior (parent members)	169	173
Junior (parent non-members)	92	125
Nonresident (pure)	286	279
Nonresident (transfers)	1,231	1,281
Nonresident—Junior	6	7
Honorary	2	1
Total Active Members	3,990	4,021
Inactive	221	211
Illness	9	12
Financial Hardship	32	43
Total Membership	4,251	4,287

The data indicates that at 1995 year end the total Club membership stood at 4,287 total members, an increase of 40 members when compared to the same period a year ago. While a net gain in our total membership might be viewed as movement in the positive direction, I think it important to briefly review and highlight some of the more significant aspects of our membership statistics.



Continued on Page 5

Athletic Report



By Greg Moss, Club Captain

I am happy to report that athletics is alive and well at the Outrigger Canoe Club. As the Club captain, I was asked to increase athletic participation, while maintaining financial responsibility.

With the help of my subcommittee we achieved that goal.

A record number of members, both young and senior, registered for paddling, and helped this Club win the state championship regatta. The Girls 16's, Novice A Women, Sophomore and Senior women all placed first at states.

Long distance canoe season also experienced larger than normal turnouts, resulting in two top ten finishes for the women, and a second overall, and first in koa finishes for the men during their respective Molokai to Oahu canoe races.

Our volleyball program remains strong and well represented with a

second place finish for the men's 35 team at the 100th anniversary of the USVBA national volleyball tournament in Springfield, Massachusetts. Team member Jon Andersen was named first team all-American.

Our men's 40 team finished third at nationals with Charlie Jenkins and Jon Stanley making first team all-America as well.

Our junior volleyball teams also performed well during their season, and remains the focal point and future of this volleyball program.

Our Running Committee pulled out all the stops, and enjoyed record number participation for all of its functions.

The One Person Canoe and

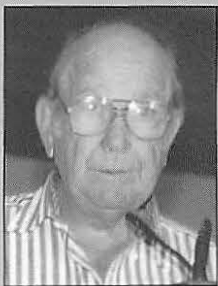
Kayak Committee was no exception to this trend, providing both participation and performance during their season.

Kala Judd was the first Hawaii/USA finisher during the 19th annual Bankoh Kayak Challenge.

Mark Jackola resurrected the Surfing Committee, and provided the platform for OCC member Robin Johnston to be named state champion in the men's 2A division, and earn the Winged O's outstanding achievement in surfing award.

These types of achievements, and levels of participation were also experienced by paddleboarding, tennis, golf, and swimming. ☺

Building & Grounds Report



By William Sewell, Chair

The Building & Grounds Committee has had a very productive year. And we did it without spending a lot of money.

Both the Dining Room work and the Bar renovation work was assigned to "ad hoc" committees which operated outside the control of this committee. Other than those two important items, here is what we accomplished, not necessarily in chronological order.

We did our annual walk through and created a repair "punch list" for the staff to follow. I feel this is a very important annual function of this committee. I hope it continues. Emergency repairs to the volleyball court fencing over the Snack Shop were accomplished at a cost of about \$13,000.

The employees lounge had

been neglected for some time. At less than \$5,000 we did some repairs, renovations and improvements.

A concrete utility ramp was installed over the steps outside the rear Bar door. This will greatly facilitate the movement of staff carts and service.

Architect Hank Reese finished a Building Component Study which documents and highlights existing structural elements and more important, potential problems which will be addressed.

A minor security problem arose near the kayak storage area and this has been solved with very little expenditure of money. We prefer to keep the details confidential for the time being.

Our energy saving plan has finally gone into effect which should produce savings of about \$1,000 per month. This system involves a five year contract of lamping our many light fixtures.

A portion of the asphalt walkways from the parking garage to the Snack Shop has eroded over the years and new paving will be installed in the very near future. The old paving was not only really rough on bare

feet, but a dangerous and unsafe situation..

Our newly formed Garden Subcommittee has worked with staff and other professionals to better our grounds and we still have a long way to go, but we are getting there. A new plan to beautify the area next to the Colony Surf is in the works right now.

Some of our concerns for the immediate and future years are:

- Possible repairs to seawalls. They are not now a problem, but an ounce of prevention is worth a pound of cure. Other areas of the seawalls have some rust marks showing and these need to be addressed. Also, an examination for the need of a "wave diverter" for the Dining Room seawall will commence next year.

- Several of our concrete surfaces are worn to the point of being unsafe and new resurfacing is in order. There are many choices of repairs and a final decision will involve the House Committee and the Architectural Committee.

- Plumeria tree roots near our front entry have grown and raised the concrete, causing a water problem at our front entry. This subject should be addressed in the coming year.

- Our sound system, while marginally satisfactory, is in need of being

renewed, whenever funds are available for such a project. We have done some preliminary investigation, but nothing final.

- The outside showers, by the Logo Shop, have had so much sand go into the drains that it now presents a challenging problem which should be solved within a year or two. Either we relocate the showers or run a new drain line, underground, to the street.

- With 32 years of use, the Club has several areas of spawling concrete. While it is not serious now, it could contribute to rusting rebars and other hidden steel members and become a serious problem if left unattended.

- The aging and out of date mechanical equipment at the front entry, plus the need for some additional space, will require some possible renovations in that area in the next year or two.

My last item, but not the least, is the concern of the Fitness Center. This center has become increasingly popular and is in need of expansion. We don't have the answers now, but ideas will start to flow so that within a year or two or three we can have a larger, nicer, more productive Fitness Center. ☺

Entertainment Committee Report

By Liz Perry

This year of entertainment has been marked by a "can do attitude." The eagerness and enthusiasm of this committee has far surpassed any I have been on here at the Outrigger or in the community.

We had 21 good, fun, capable people and it showed.

This committee kicked off the season with the Outrigger luau. This

event has been run annually for 87 years. A remarkable feat in itself. No more remarkable however than brother Henry and his boys and the maintenance gang setting off the imu fire at 2 a.m. in our own backyard. The success of this event was due to the widespread participation—from management—the office gang—Domie and his boys—and of course every one in food and beverage.

Did I mention we made money? We did.

Our next event was equally exciting but quite different. The Dining Room was transformed into a Paris fashion runway with lights and music, models and a fast paced show. The food was glorious and the evening very dramatic. Oh, did I mention we made money. We did.

But the best event has yet to

come. Inspired by Christian Petersen, OCC is going Hollywood. Ladies and gentlemen, March 9th the

Entertainment Committee is pulling out all the stops. There will be more lights, more music, more entertainment and more food than any previous event. ☐



Finance Committee Report

By Gregg Robertson, Chair

The Finance Committee is charged with the task of providing the Board with policy recommendations and strategy for investing the monies held in the Building Fund and the reserve for capital expenditures, monitoring the administration of the Club's employee retirement plan and the investment of its funds, reviewing the Club's insurance programs and, just recently, has agreed to oversee the process and scope of the Club's annual audit. As you know, the committee works with the Club's management to

have them implement the approved proposals.

The investment policy for investment of the Club's funds, which the board has approved, places equal emphasis on the long-term preservation of capital and asset appreciation.

The book value of the Building Fund increased from \$6.6 million at the beginning of 1995 to \$7.5 million at the end of 1995. Fifty-three percent of this increase was from initiation fees and 47% from investment income and realized capital gains, which were reinvested.

Additionally, at the end of the year

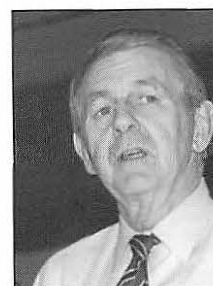
there were \$505,000 in unrealized capital gains which are not reflected in the book value. As would be expected, the Club's portfolio of bonds and stock mutual funds performed well in 1995.

The capital expenditure reserve is invested in short term fixed income investments and had a balance at year-end of \$211,183.

The committee reviewed the scope of the Club's insurance programs and implemented an increase in our flood insurance to \$500,000 and has recently made a recommendation to the Board to add, approximately, an additional \$4.5 million of flood and water damage insurance, the cost of which is

not expected to exceed the amount budgeted by the Club.

The investment allocation of the employee's retirement plan was recently reviewed and modified by the committee to assure that the investment returns are equal to, or higher than, the 8% assumed in calculating the plan's funded status. ☐



Admissions and Membership Committee Report

Continued from Page 3

The Admissions and Membership Committee reports presented at the 1993, 1994 and 1995 membership meetings, in conjunction with this past year's membership data, give us an historical perspective as well as a suggestion of trends to which I believe the membership at large needs to attend. In 1993 your Admissions & Membership Committee chairman reported, "As of this date our membership has reached the overall quota set by your Board of Directors. Openings in our core membership categories of Life, Senior, Regular and Intermediate will soon occur only through the process of attrition."

In 1994 the Admissions & Membership Committee report to the general membership indicated that,

while in the previous year "our membership had reached the limits set by the directors and we were struggling with long waiting lists in most categories," that "in fact our waiting list has declined by from over 400 in 1992 to just over 200 at present."

Last year's report to the general membership highlighted two specific trends: First, the number of transfers to Nonresident membership categories had increased significantly while, second, the waiting period between submission of application and interview for membership had dropped from approximately a three year wait at the end of 1993 to 18 months at the end of 1994.

A review of the 1995 statistics suggests that the concerns presented to you last year were certainly legitimate. The transfers to Nonresident category totaled 155 for the year, up from 128 in the previous year. In terms of time required to process an application from the time it is submitted to actual interview of the candidate, we have dropped

from that once legendary five year waiting period to three years in 1993, to 18 months in 1994, to often under a 12 month period in 1995.

We currently have 126 applications in process of which 61 are applications for Regular membership, five for Intermediate, 15 for Associate and 19 for Junior. We could accept these applications in entirety and for the most part remain under our membership quota. In fact, the only categories which appear to be close to meeting or exceeding the quota are the Associate Spouse and Nonresident categories.

Thus, while the various membership category statistics hover about our maximum quota, the application pipeline continues to dwindle.

We are not alone in this predicament. I have had reports from other private clubs in the state indicating they are experiencing similar difficulties.

The general uncertainty felt in our community, nationally and internationally appears to play a direct role in an

individual's willingness to commit to expenses such as incurred in our membership process in order to enhance their leisure time and personal lifestyles.

Given this condition it would behoove the membership to increase its efforts to seek out, introduce and recommend for membership to the Outrigger Canoe Club those individuals in our community who reflect the Club philosophy, values and objectives.

This past year saw this process at work. We interviewed numerous outstanding candidates in all categories. We have a terrific crop of Junior members who were brought into the Club and who represent our future Regular membership and leaders.

I would encourage you to continue to recruit the same high caliber of candidates in the coming year. If we do not, the trends reflecting membership and applicant decline will continue with significant negative consequences for the Club and thus for you and me. ☐



House Committee Report

By Al Serafin, Chair

Our Club is gifted with many professional business members who are willing to share their knowledge and contribute their valuable time. This committee was asked to micro-manage in the absence of a general manager. The progress made by this committee was a direct result of their business experience, hard work and time.

Our Food and Beverage members worked tirelessly on the Dining Room remodel, a new menu and a new chef.

Our Front of House members helped improve the cleanliness of our facility, the appearance and performance of our Front Desk.

Our publicity team kept the Club informed on our progress.

Our Protocol and Reciprocal Clubs team gave us increased communications with all clubs and a new policy manual.

Our Human Resources team worked on new employee policies, continued employee training and worked with the Board on a new management benefit package.

The Logo Shop had a super performance in 1995. We had new merchandise and increased sales in a very tough retail year. ☺

Public Relations Committee Report

By Bob Hogan, Chair

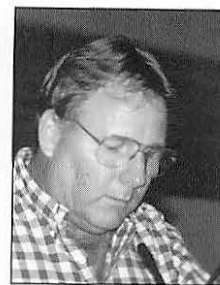
We have had an exciting year and I am proud to report that our committee has accomplished many of our initial objectives such as:

- Producing the "Outrigger" in a timely manner, under budget.
- Expanding our reciprocal club connections and actively seeking new club affiliations.
- New greeting and new Club information packets for new members and guest members.
- Another tremendously successful photo contest.
- The brightest star this year has been our monthly meetings with the marketing ad hoc committee.

This committee has enabled many positive changes to happen and greater direction to be taken to increase member awareness and participation in all aspects of the Club.

There are three projects that we are presently involved in and will carry over into the next year:

- Develop a club roster
- Changing our committee's name to Club and Member relations or Marketing and Member relations.
- Appointment of a special magazine review committee within our committee to publish an even better *Outrigger*. ☺



Long Range Planning Committee Report

By Randy Grune, Chair

The Long Range Planning Committee accomplished many important things in several areas over the course of the 1995 committee year.

The Committee initially reviewed and analyzed the consultant's report on the results of the Membership Survey. We then made recommenda-

tions to the Board of Directors regarding distributing the report to the Standing Committees and Club Management.

We also evaluated the Club's Long Range Plan and the planning process. We determined that revisions were necessary. We subsequently reformat- ted the plan document to be consistent with the Club's organizational structure

and revised the planning process to track with various events that occur during the operating year.

Challenges for the upcoming committee year include:

Implementing the new planning process.

Increasing the involvement of other committees in the development of the Long Range Plan.



Improving the process of budget- ing for capital expenditures.

Continuing the analysis of the Survey and Club's demographic data. ☺

Historical Committee Report

By Chip Higgins, Chairman

The Historical Committee tries to capture the oral, written and photographic record of the Club in an archive that validates the greatness of Outrigger Club teams. When you are beyond your athletic performance years, you may want to turn to these dusty tomes and photographs to relive your good old days when the term "OCC" really meant something.

Having set the stage, the Historical Committee had a very active year in collecting the rich heritage that has become the Outrigger Canoe Club's impact on the 1995 page of Waikiki history.

The committee has entered the digital age and members of the committee have developed data-bases on their own computers. The Club needs to get these automated records incorporated into the Club's new computer systems.

We have also come to realize that the valuable primary documents that we have in our archives are really at risk from a fire or flood in the Board Room where everything is kept. The committee will recommend to next year's committee that it consider action to place selected documents in a fireproof and water proof safe.

I want to give a particular thanks to Tommy Thomas, who assembled and

maintained for years, a "Senior Member Background database". He leaves the committee this year after being a founding member. Thank you, Tommy, for your 25 years of committee service. ☺



Guest Chef Night

Eugenio Martignago—Nick's Fishmarket

OCC Chef Manfred Pirscher has arranged for Chef Eugenio Martignago of Nick's Fishmarket to be the Guest Chef on Wednesday, April 17.

Chef Martignago began his culinary training at the age of 15 at Venice's restaurant school, Scuola Alberghiera, followed by seven years at restaurants in France and Germany. Upon leaving Europe, Chef Martignago arrived in California and worked as an Executive Chef for 11 years in various restaurants in Irvine, Los Angeles, Beverly Hills, Hollywood and Newport Beach.

In 1992 he was asked to be the Executive Chef for the Black Orchid

Restaurant in Restaurant Row. After the closure of the Black Orchid in 1994, he became the Executive Chef of Nick's Fishmarket and continues to create innovative and exciting dishes.

Based on his philosophy that "people want to see what they eat", Chef Martignago creates a superb menu using fresh local fish, vegetables, fruits and herbs. He then blends European culinary taste and experience for a unique result.

In 1996 and 1994 the Hale Aina Award for Best Seafood Restaurant in Hawaii was awarded to Nick's Fishmarket.

The menu for the evening will be as follows:

Appetizer

Saffron Risotto with Sauteed Sea Scallops
with a Sun-dried Tomato, Black Olive and Caper Tapenade,
Tomato Concasse and Garnished with Tobiko Caviar and Basil Oil

Entree

Seared Ahi Wrapped in Nori with Wild and Jasmine Rice
With a Sweet Chili Ginger Cilantro Sauce
and an Oriental Vegetable Roll

Dessert

Chocolate and Raspberry Decadence Cake
With a White Chocolate Triangle and Fresh Raspberries

The price is \$34.50 per person and will only be available in the Dining Room. The Hau Terrace will offer the regular full menu.

Alan Suzuki of Robert Mondavi Wines will be the guest Sommelier to assist with the featured wines which are priced separately. Seatings begin at 6 p.m. and reservations will be taken at the Dining Room. Space is limited so make your reservations early. ☎

Enjoy Easter at the Outrigger

*Harpist
Pumebana Davis
will entertain at
the Easter Sunday
Brunch at the
Club on April 7.
The Brunch
Buffet will be
served from 8:30
a.m. to 1 p.m.,
with Miss Davis
performing from
10:30 a.m. to
12:30 p.m. The
Easter Bunny will
be on hand to
pass out treats to
children from 9
a.m. to Noon.
The Easter
Sunday Dinner
Buffet will be
available from 6-
9 p.m. Make your
reservations
early.*



Employee of the Year

You've seen Lang Huynh's name before. She's been the Employee of the month at least three times, and she is now honored as the Employee of the Year, with a \$500 award for her good work.

Lang is a real treasure, having come to Hawaii 15 years ago, and for the last 14, an employee at OCC. Chef Teruya first hired her as a dishwasher helper where she "soaked up" English, became trained as a kitchen helper and then Chef taught her all his secrets.

Now, says Lang, she is learning more from our new Chef Pirscher. She says she gets along with him just fine, which is a good thing, because she is our chief cook when he's not around.

With the new management and the new chef, Lang is busier than ever, with our Dining Room packed most nights. Serving 150 people, they are cooking up a storm in the kitchen.

Lang's favorite is to cook for the buffet on Sunday nights. She loves the variety, and doesn't care what the menu is. She can cook Thai, pastas, prime rib, whatever we want to eat. When pressed to name a favorite, she said "maybe the garlic shrimp?" That is a good enough recommendation for us, Lang.

By the way, the cooks have new hats, OCC baseball caps, and they look just great! ☎



Lang Huynh receives Employee of Year trophy from President Wendell Brooks at annual meeting.

William Barnhart and Cline Mann Selected for Life Memberships in the Outrigger Canoe Club

Two lifelong friends were elected to Life Membership at the annual meeting of the Outrigger Canoe Club on February 26, bringing the current number of Life Memberships in the Club to 11.

William "Whiskey" Barnhart, a Club member for 66 years, and John Cline Mann, a Club member for 50+ years, were honored for their lifetime contributions to the Club.

The award was recommended by the Historical Committee, approved by the Board of Directors, and ratified by the general membership at the Annual Meeting.

"We've been friends for as long as we can remember," they recalled after the meeting. "And we sure didn't expect this honor."

"We're second generation members," Cline said. "Bill's father was president of the Club and I served as president. We've both been involved in the Club's athletic programs and standing committees."

In the 1940s, Barnhart served three terms as chair of the Volleyball Committee, was Athletic Coordinating Committee Chair, and

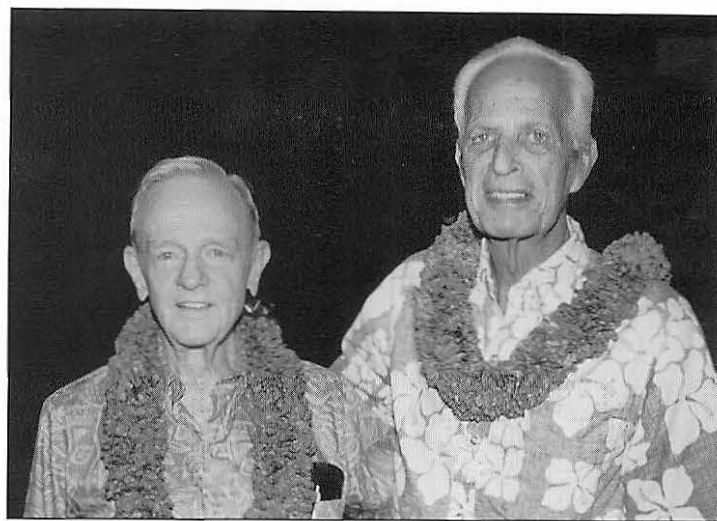
Club Captain. For 20 years, from 1948-1968 he was manager of the Club baseball team. In 1950, he was vice-chair of the Canoe Committee, and from 1951-53 was coach of the Wahine 6 volleyball team.

During 1940 through 1990, he became almost a permanent fixture on the Judges of Election Committee, including two years as chair.

He later served on the Historical Committee for seven years and was elected chair for seven months before he became ill and had to resign.

"I believe that Bill's chief contribution to the Club was in the near term that he served as chair of the Historical Committee," said Eugenia McMahon of the Historical Committee. "He sensed the need for computerizing the index files of the Photograph Subcommittee and appointed two new members, Paul Dolan and Tay Perry, both of whom are experienced in computer indexing. Paul's breakdown of the present index is currently being utilized in the transference to computer coding. He will next continue to computerize the Trophy index files as well. All this was set in motion by Bill Barnhart."

Cline is one of the most loved of all Club members. He has probably sponsored more Junior members for



Bill Barnhart and Cline Mann were elected to Life Membership at Annual Meeting.

membership than any other person. He has been a fixture at the Club for so many years that his routine is well known—there's "Cliner-time", lomi salmon and poi on Saturdays, afternoon naps on the beach, and friendship that crosses all age categories.

Having that first beer with Cline when you turn 21 is a ritual enjoyed by many. Anyone who has dared divulge the score of a Monday Night Football Game has felt the wrath of his stare and has never done it again!

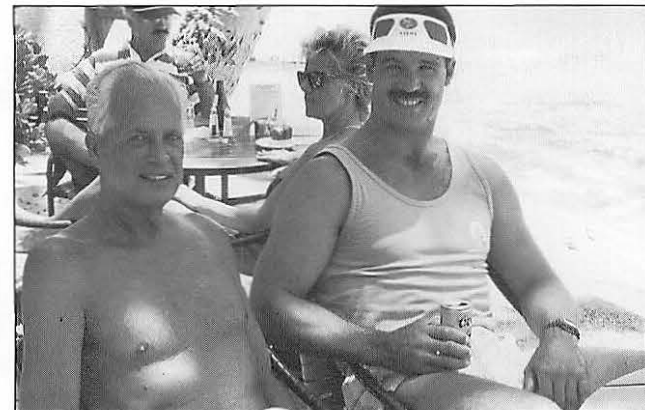
His recall of Club events is legendary and his willingness to share his knowledge has benefitted many of

the younger generation.

Cline's father, the late James B. Mann, a prominent Honolulu engineer and surveyor gave years of dedicated service to the Club. One of his important contributions was the planning and supervising of the construction of the 1940 building addition to the Club at its former location.

Following in his father's footsteps, Cline became a successful engineer and surveyor also—and a specialist in matters pertaining to Hawaii's lands. Like his father, he too, from an early age became intimately involved in the programs and activities of the Club.

With his background, it was only natural that when the Club was faced with the prospect of moving to a new location that Cline was encouraged to seek a seat on the 1959 Board of Directors. Appointed secretary, he immediately read the minutes of every Board meeting that was available. He served a year as a member of the New Club Planning Committee and then became its chairman. His outstanding work led to his appointment, when construction began in 1963, as chairman of the New Club Building Committee.



Cline presents Cline Mann 5K Paddleboard Trophy at first race.

Cline enjoys his favorite brew at his favorite place on the Terrace with Russ Francis.

A strict task-master, he required his committee (see the plaque at the entrance to the Club) to meet at least once a week—on site—with the architect and contractor to review, coordinate and monitor progress. This occurred during the entire nine months of construction. The excellent result of this effort speaks for itself.

In February 1964, following the Club's move to its present location, Cline served a term as president.

Cline's main forte, however, is his interest in and support of the athletic programs of the Club, particularly for its younger members. Water sports were his forte. Becoming a sailor only after the Club's move to its present site, he was Club champion in the Sunfish/Scorpion class during the late 60s and early 70s when the Club fleet consisted of more than a dozen boats.

He is probably best known for passing on his sailing skills to a multitude of younger members, some of them now champions.



Joy and Bill Barnhart (center) enjoy dinner at old club.

During a brief period in 1964, he participated in underwater speed swimming in which he distinguished himself.

Although never a paddler, he has been a helper on more than 25 Molokai to Oahu Canoe Races beginning in 1960, as well as nearly a dozen Molokai to Oahu Kayak races since 1979. His help with change charts (which he devised) and other

chores has been invaluable to our crews.

Over the years, Cline has served on many Club committees including the Sailing, Volleyball, Canoe Racing, Paddleboard, Building and Grounds and Admissions committees.

Cline served as Club Captain in 1965 and 1966 and for a period of seven years, represented the Club in the Hawaiian Canoe Racing Association.

After a three year absence from the Board of Directors, he returned to serve for five more years. Cline is a member of the only family to have representatives of three generations elected to the Board of Directors. His father was also a president and his niece, Cordy Dowsett MacLaughlin, was a Director. His record of perfect attendance for 10 years of Board meetings will be hard to beat.

Cline is the first to admit that he never paddled on a canoe team nor played on a Club team. However, he was awarded the Winged "O" on January 15, 1968 for his contribution to Club athletics.

In 1975, Cline organized the Club's Honolulu Marathon aid station on Kahala Avenue and directed its operations for 20 years.

Cline was also the inventor, builder (1970) and maintainer of the Club's canoe paddling trainer "Kekumuhoe'ana" (meaning pad-

dling teacher) located in the basement of the parking structure.

Since 1961 he has been a promoter of paddleboard racing and instrumental in the inauguration of the three annual races sponsored by the Club. While serving on the Paddleboard Committee in 1985, the other members of the committee, by deft maneuvering behind his back, and with Board approval, officially named the annual summer ocean race the "Cline Mann 5K". A handsome perpetual trophy bearing the name of the race contains the names of all winners of the race. It can be seen in the Lobby Display Case.

A founding trustee, along with Club past president Ward Russell, of the Duke Kahanamoku Foundation, he played an important role in the merger between the Outrigger Foundation and the Duke Kahanamoku Foundation to form the Outrigger Duke Kahanamoku Foundation in 1986.

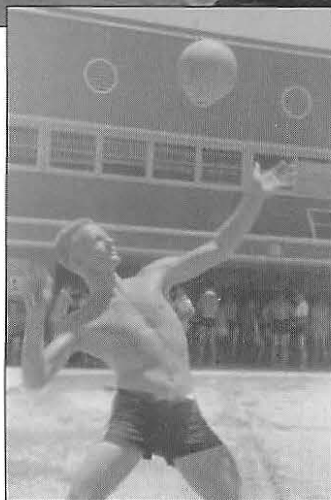
A walking encyclopedia of the Club's history and the genealogy of many of its longtime family members, Cline is particularly respected for his true "Aloha Spirit."

Both Bill Barnhart and Cline Mann have earned the honor of becoming Life Members in recognition of their many unselfish contributions to the Club.

Congratulations to both. ☺



Cline operated the Club's Marathon Aid Station for 20 years.



Bill Barnhart

As the Terrace Turns

Elizabeth Parsons recently hosted a small dinner of 15 "old" friends to celebrate the no-age revealed birthday of Margaret Vorwick. They had cake and candles and a good time in the private dining rooms. . .

Mary Kimball reports the delayed celebration of her husband Richard's 85th birthday. A group of 10 "old" friends met for lunch. One guest came from Maui, and they had a wonderful time. In fact, Mary went on bragging about the menu that Liz set up for them. You should all think about birthday lunches in the intimate setting of the small dining rooms. . .

A special birthday wish to the Outrigger Duke Kahanamoku Foundation. They were 10 years old in February. It was 10 years ago that the former Duke Kahanamoku Foundation and the former Outrigger Foundation merged to create a unique, dynamic foundation, now with a \$800,000 endowment, aiming for a million by the year 2000. With the loyal support of their many OCC and community donors, they have made a place for themselves

as a benefactor of athletes and teams representing Hawaii.

One more birthday. Happy 90th to Melinda Johnson who is the aunt of **Betty Frazer**. Betty entertained a group of 12, which included cousins from the mainland and a brother from Hilo.

Congratulations to **Louise Lalakea** and Jason Alving on their February 9th wedding at the Punahou Chapel. They had their rehearsal dinner with lots of mainland guests and in-laws from Seattle at the OCC on February 8th. They chose February 9th for their wedding date because that was the 37th anniversary of her parents, **Lynn and Tom Lalakea**. The young couple is living in Seattle.

Jane Wylie was looking for a special place to entertain the trustees of the Bible Institute of Hawaii where she is a volunteer. This is a non-denominational group that teaches educational classes in various churches. The 16 gathering for dinner agreed that OCC is a special place.

A big and fancy wedding shower was held on February 17 for **Peter Mattice's** bride Susan Fries. **Gloria Brooks, May Balding and Gay Austin** decorated the Dining Room to

the ceiling with Valentines and put on a splendid luncheon for 25+

guests, all friends of Susan's from work and church. She is a manager at the Big Island Steakhouse at the Aloha Tower Marketplace, and Peter is a drug abuse counselor at Kalani High. The wedding was scheduled for March 23 in Spokane, Susan's home, with an OCC reception planned for April.

Marty Schiller held a dinner and reception for mainland business clients and friends who were here for the Hawaiian Open. Guests from New Jersey and San Francisco (and other places) had a really fun time visiting with local guests Carole Kai and Emme Tomimbang who can keep the conversation lively. . .

Ed Futa entertained the world president of Rotary International at OCC. In addition to the honored guest, the Governors for Rotary from Hawaii were in the group. Guests commented on the very nice setting for a distinguished gathering.

The Hawaiian section of the Mercedes-Benz Club of America invites owners of Mercedes-Benz to attend the club's meeting on April 27 at the OCC. **Richard Berry** recently returned from Europe and tour of the Mercedes-Benz museum and the assembly line plant. He will provide

up to date information on the latest news from Germany. Cocktails will be at 6 and dinner at 7. To make reservations, call Bette or Richard at 924-7226 or 591-8407.

Kris Smith, still working and going to school (no time for cookies and/or paddling this year), found time to help her parents Joe and Lillian Vasey entertain at OCC for retiring COMSUBPAC Rear Admiral John Michael Barr and his wife Marcia who are leaving the Navy base, but hope to return to Hawaii.

Mr. and Mrs. Tom Fanning announce the engagement of their daughter, **Annie**, to Robert C. Henson of Eugene, Oregon. The wedding will take place on April 14 at the Larks Creek Inn in Larkspur, California. The couple will honeymoon in the British Isles and then make their home in Seattle where Annie is a writer and award winning poet and Robert is a musical composer, who won the prestigious Lincoln Center Award for original music and sound design in 1995.

Age Ellis III played in the Hula Bowl this year, while his sister, **Auli'i Ellis**, has been named the Most Valuable Player on the women's volleyball team at Santa Clara. ☐

Contributions to this column are always welcome. Leave items for the Editor at the Front Desk, fax to 833-1591 or email to OCCMag@aol.com.



Three members of the Outrigger's 1967 National AAU Volleyball Championship team met at Robert Redford's Sun Dance Ski Area in early February to tear up a few mountain tops and reminisce about the gold old days. From left, Ron Sorrell, David Hendrickson and Carl Magowen. Carl is now head coach of the BYU men's volleyball team.



Evan Mattice, Susan Fries and Leslie Mattice at wedding shower for Susan.



Mrs. Ed Sterling invited 20 for brunch, including Timothy Ojile, Laila Twigg-Smith and Galen Leary.



Newly elected officers for the OCC Duplicate Bridge Club are Anne Lewis, assistant chair; Delors Judd, secretary; Billie Baird, tournament chair; Kai Ostrem, chair; and Jean Boas, treasurer. The club has been on-going for more than 30 years and is the only Outrigger activity that is self supporting. The club also provides financial support to the Bobby Benson Center and the Abused Spouses & Children. The club meets every Monday at noon and welcomes new members. Bring a partner and join or call Kai at 737-1190 for more information.

Outrigger Canoe Club Salutes the Secretary

By Gloria Keller

Secretaries Week will be celebrated nationally the week of April 22. On Friday, April 26th, the Outrigger Canoe Club will acknowledge this time with a luncheon fashion show featuring the clothes from Liz Claiborne.

Informal modeling, by six Club members, will feature fashions covering the casual look, the career look, the day-time to evening look. Easy to care for fabrics for spring and summer are a part of the Liz Claiborne offerings this season,

as well as a petite and a missy line, a full line of their accessories: jewelry, hats, belts, sun glasses, scarves, and a broad range of bags and totes will add to this show. There will be something for everyone, which will be available at the Liz Claiborne locations, Pearl Ridge Mall and Kahala Mall.

The OCC has always been a popular venue during Secretaries Week, so be sure to call the Dining Room at 941-1444 to make your reservation. A delicious luncheon menu is being planned for this occasion by Chef Pirscher, the magnificent setting and view, along with the added attraction of the Liz Claiborne Fashion Show, adds up to a perfect thank you to your secretaries.

Dining Room will open at 11:30 a.m. with lunch service followed by the show at 12:15 p.m. ☐



SECRETARY'S DAY LUNCHEON BUFFET

WEDNESDAY, APRIL 24, 1996

SALAD BAR

Garden Fresh Mixed Greens with Selected Condiments
Sliced Tomatoes and Cucumbers
Pasta Salad
Curried Chicken Salad
Fruit Salad

ENTREES

Evil Jungle Prince
Steamed Deep Sea Snapper "Cantonese"
Stir Fried Thai Noodles with Vegetables
Jasmine Rice
Sautéed Asparagus and Carrots
Fresh Rolls and Butter

Dessert

Create your own Ice Cream Sundae with Assorted Toppings
Kona Blend Coffee or Tea

\$14.50

Sip Into Something Comfortable

By Valerie Davis

Mark your calendars for the upcoming Spring Wine Tasting on May 6. It has been several years since we've had a wine tasting at the Club, and this one promises to be something special.

This event will be held from 6-8 p.m. in the Main Dining Room, and will feature more than 30 different wines for you to taste, including Chardonnays, Merlots, Zinfandels and many others, including some new ones.

You will be able to vote for your favorite wine and if one or two appear to be popular, they could very well end up on the wine list permanently.

There will be some fine food to go along with the wine. Chef Pirscher is planning a delicious spread of hors d'oeuvres and for those of you who have not yet sampled some of our new chef's culinary capabilities, this would be the perfect time to do so.

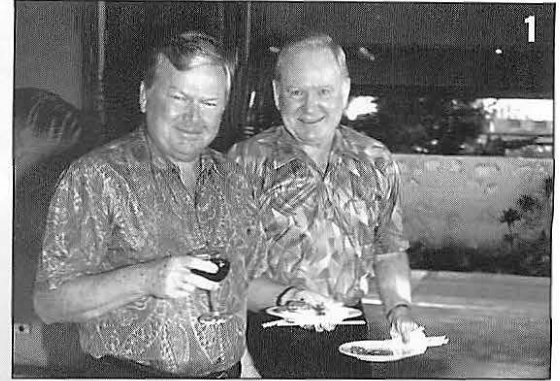
Reservations are being taken at the Front Desk for this event. The price is \$19.50 per person and a portion of the proceeds will be donated to the Outrigger Duke Kahanamoku Foundation. So plan to come enjoy a marvelous evening, knowing at the same time that you are helping a good cause. ☐

*Indulge yourself
with the new
bedroom suite
you've always wanted*

**Specializing in Handmade
Pine Furnishings from Canada**
**Armoires, Dressers,
Night Stands & Tables**
Call for an Appointment
NORTHERN EXPOSURES
CARRIE CHRISTMAN, OWNER
373-9243

Aloha Party Honors Club Volunteers

Members of Outrigger committees, the Board of Directors and former Presidents were treated to a fabulous feast in the Dining Room on February 12. Enjoying the party were 1) Bill Haig and Jim Hammons. 2) Mary Rae Fearon, Genie McMahon, Ruth Hakuole, Beth Madinger. 3) Martha Mist and Ned Broadbent. 4) Chip and Barbara Higgins and Marilyn and John Goss. 5) Steve Scott, Terri and Jay Pyncheon. 6) Ramsay and Marian Sandelin, Marilyn Haine and General Manager John Rader. 7) Priscilla and M.J. Berenzweig and Val and Bud Ackerman. ☎
Photos by Marilyn Kali.



Kaluakoi Hotel & Golf Club

Room Rates
STARTING AS LOW AS \$70

Outrigger Canoe Club members receive a
25% DISCOUNT
 from our published room rates &
 all activities at Fun Hogs Hawaii.

Come relax and enjoy the friendliness and beauty that is Colony's Kaluakoi Hotel & Golf Club.

Kaluakoi boasts one of the most spectacular ocean front golf courses in all of Hawaii. For safe and fun outdoor adventures, Fun Hogs Hawaii specialize in Kayaking, Snorkeling, Mountain Biking and Catamaran Excursions.

For reservations, please call the resort direct at (808) 552-2555 or Toll free (800) 435-7208 (Hawaii only)

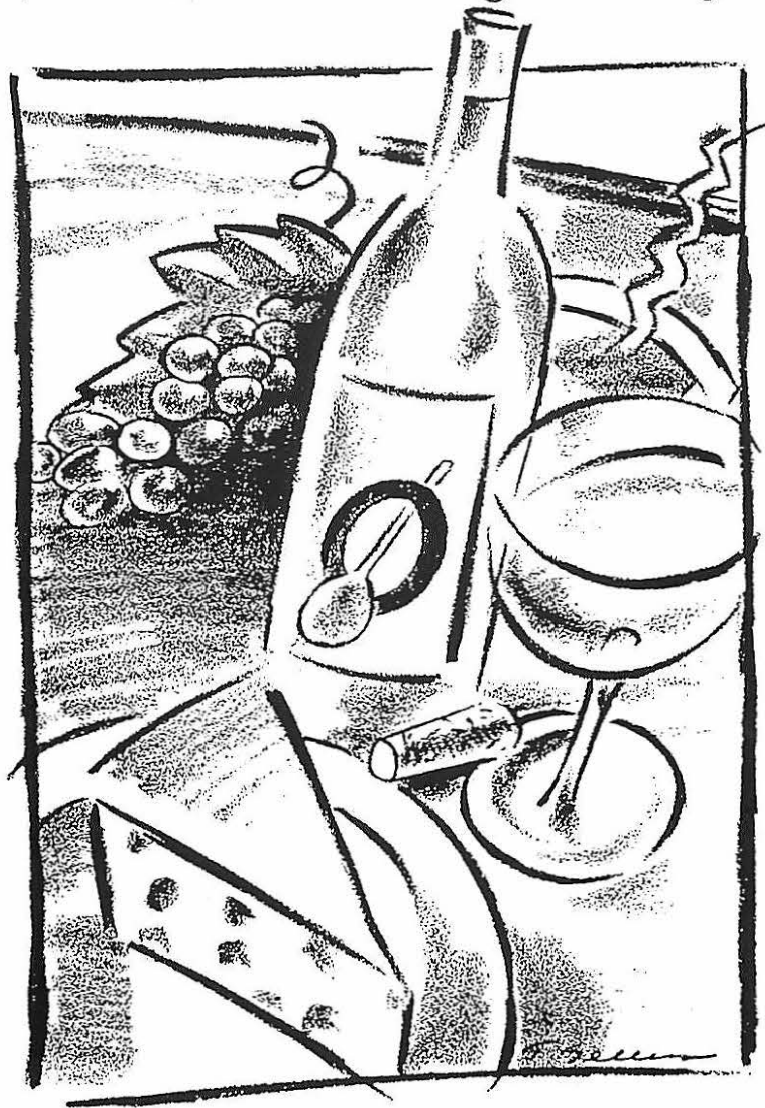
Geoff Graf, General Manager
 Colony's Kaluakoi Hotel & Golf Club

Mike & Maria Holmes
 Fun Hogs Hawaii

*All rates are based on double occupancy. All room rates are subject to 4.17% State tax and 6% Hotel tax. Discounts subject to availability.



Sip into Something Comfortable



OUTRIGGER CANOE CLUB

A VAST
SELECTION OF
FINE WINES
FOR YOUR
TASTING PLEASURE
ELABORATE
& DELICIOUS
HORS D'OEUVRES
INCLUDING A

Presents the
WINE
Party

SELECTION OF
IMPORTED

CHEESES

MONDAY

MAY 6TH

6 - 8 PM

\$19.50

MAKE RESERVATIONS

923-1585

A PORTION OF THE PROCEEDS' WILL BE DONATED TO THE OUTRIGGER DUKE KAHANAMOKU FOUNDATION

48 hour cancellation policy in effect

From the Club Captain

Ron Li wants everyone to know that he continues to rely on the expertise of Bill Bright and Greg Moss for the tenure of his Club Captaincy. Bill, just coming off of the Board of Directors will be working with the Fitness Center, and Greg, recently "retired" Club Captain, will continue to work on the kayak racks and their assignment.

Ron says he is firm in not taking on ALL of the work, and he knows that Bill and Greg have expert knowledge of the athletic activity of the Club.

Ron also wants everyone to know that five volleyball teams went to Hilo to play in the Haili tournament on March 30—the Junior Girls, Open Men, A Men, 35 Men, and Masters Men.

AND IT IS PADDLING TIME AGAIN. If you don't have your own membership number, you must process your membership through the Admissions Committee. Status as a spouse or a child of a member is not sufficient membership.

Registration is April 13th, in the Board Room between 10 and 2. Bring proof of age, and if you paddled before for another club, a release from that club. Forms will be available in the Board Room on the day of registration.

And don't forget the pep rally, paddling start up party on the 20th. This will be a steak fry in the sand for the paddlers, and anybody else who wants to join in, to hear a word about our paddling program and plans for the 1996 season. All paddlers, please show up on both the 13th and on the evening of the 20th. Imua!

Junior Women VB Team



Members of the Junior Women's team are, front, Ewa Rochlin, manager; Marisa Whalen, Mabealani Lum, Mekia Ostrem, Reiko Schoenfeld. Standing, Coach Kisi Haine, Kiana Henry, Brandy Mailer, Amy Gamble, Lesley Johnson, Taylor Beckert, Annie Rosa.

We are proud to announce the debut of the Outrigger junior women's team. The team is being coached by Kisi Haine. She has pooled a strong group of experienced players from three schools who have all competed for different Club teams in the past and have all been recognized on both state and national levels.

The girls already started competing in local HVBA tournaments and placed a respectable 21st out of 80 teams in the Kaepa Tournament in Las Vegas during the past President's Day

weekend. They proudly represented the Club and received much attention.

The team returned to prepare for the rest of the season expecting to better their record. Look for results in the upcoming months for the Haili tournament in Hilo and two national tournaments this summer.

Travel expenses are being sponsored by the Club with additional fundraising efforts. Please see one of the team members to purchase a smart looking T-shirt in celebration of the new team or purchase one from the Logo Shop while supply lasts. ☺

For the Record

Biathlon

Magic Island Biathlon
Laurie Sloan, 2nd, :44:28

His n Hers Valentine Biathlon
2/11/96 Ala Moana Beach Park
2.5 mile run, 800-meter swim
Uli and Joanne Klinke, 1st, 81-99 Married, :34:29
Bruce and Laurie Sloan, 3rd, 81-99 Married, :37:35
Arnold and June Lum, 2nd, 100-over Married, :45:03
Katie Bourne and Pete Schlager, 1st, Just Friends, :33:50
Diane Stowell and Ron Pate, 1st, 100-over, Just Friends, :32:20
Hilary Lambert-Laughon Bryant, 1st, Family, :33:48

Marathon

Honolulu Marathon
Annie Corboy 5:50

Paddling

Poai Puni Series
2/4/96 Hawaii Kai 8 miles

Canoe

Courtney Seto, 2nd, Open, 1:12:16
Mark Rigg, 3rd, Open, 1:12:28
Chris Kincaid, 1st, 40-49, 1:17:14
Jeff Metzger, 2nd, 40-49, 1:19:05
Tom Conner, 1st, 50-59, 1:18:13
Mary Smolenski, 2nd, Women Open, 1:29:28
Paula Crabb, 1st, 40-49, 1:32:06

Kayak

Jennifer Lowe, 1st, 18-29, 1:25:57
Cathy Whitford, 1st, Novice A, 1:22:29
Sara Ackerman, 2nd, Novice A, 1:27:53
Kayak-Short Course, 4 miles
Norma Santiago, 1st, Novice B, :53:04

Extra Innings

Spring training for the OCC Softball Team will begin this month. Head Coach Jim Gaddis and assistant coaches Bill Kilcoyne and Henry Ayau have high hopes for the 1996 season.

Team captain Paki Vaughan and 1995 MVP Scott Rolles headline a roster of veteran players who are determined to bring home a championship.

Leahi League action begins on May 15.

OCC Softball information can be found on the bulletin board in the Men's Locker Room. New members are always welcome. ☺

Kamuela

Are you ready for the country?
Because it's time to go!

Mauna Kea Fairways
Anekona Estates
Kohala Ranch
Nani Paniau
Mokulua

Sandalwood at Waimea
Mauna Lani Resort
Puu Lani Ranch
Waikii Ranch
Maliu Ridge



William N. Jardine Realtor

Keiki o ka 'āina • Buyer's Representative • Waimea resident since 1957.

Phone: 808 / 885-6061 ~ P.O. Box 1599 ~ FAX: 808 / 885-6063
Kamuela, HI 96743

Backward Glances

By Joan C. Pratt, Historical Committee

45 Years Ago—1951

Indoor-Outdoor Polo was played each Friday night at the Honolulu Stadium. The game originated in France. Once called Paddock Polo, it was played on a field one-third the size of outdoor polos; three, not four, men made a team; and an inflated 5" ball was used. All this contributed to a faster game. On the Oahu team were

OCC members "Kinnie" Kimball, "Bin" Wilson, Reed Glover, Clarke Reynolds and Fred W. Rice.

40 Years Ago—1956

Waikiki Beach, formerly thought of as from the Royal Hawaiian to Kuhio Beach, now extends Ewa to the yacht harbor with the development of the Reef Hotel and the Kaiser properties. Henry Kaiser envisions that it will eventually extend Diamond Head to the Elks Club.

25 Years Ago—1971

On April 19 the First Annual Spring Wine Tasting party was put on

by the Entertainment Committee under chairman Bob Wilson. The party was limited to 222 persons who consumed 168 bottles of wine.

20 Years Ago—1976

OCC crew members on the historic voyage of the Hokule'a to Tahiti will be Tommy Holmes, one of the founders of the Polynesian Voyaging Society, and Kimo Hugbo, who has been crew chief and been responsible for construction and modification of the canoe. Holmes "will oversee food, plant, animal, and psychodynamics experiments." Hugbo will "be in charge of all steering." Also

"instrumental in the critical paddle and sweep design" was Kimo Austin.

10 Years Ago—1986

Paula Carbone Crabb was approved as Club Captain. She is the first woman selected for this position and served for two years. ☺

LOGO SHOP

Open Daily

10 am — 6 pm

Members It Pays To Know

KITCHEN SOURCE

FINE DESIGN AND CABINETRY

Marie Lail Blackburn, CKD
Certified Kitchen Designer

758 KAPAHULU, SUITE 270 • HONOLULU, HI • 96816
808-737-5446 • FAX 808-735-2079

KEA'S STUDIO-CUSTOM FRAMING

A Vast Range of Framing Options at Reasonable Prices

- Koa & European Mouldings
- Shadow Box Frames • Oval Mat Cutting
- Wet, Dry and Museum Mounting
- Contract Framing for Hotels and Condominiums

Kehaulani Kea, Owner
3207 Martha St. Honolulu

737-9944

HEGERDESIGNS

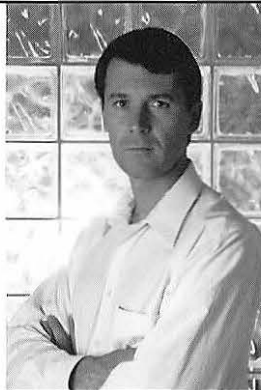
Custom residential and commercial projects; architecture and interiors

Milan I. Heger, AIA

401 Kamakee, Honolulu
Hawaii 96814

596-8835

award winning and published projects



Concerned About What Stocks And Bonds Are Right For You Now?

Discuss your investment needs with Gregg Robertson at 523-9488. Gregg will help you to determine the appropriate investment strategy.

CADINHA & Co.

Pioneer Plaza / 900 Fort Street Mall, Suite 1240



RON LI

526-2914 — Direct
948-0082 — Pager
523-3449 — Fax



NORTH AMERICAN
MORTGAGE COMPANY
1001 Bishop Street
Pacific Tower, Ste 2400
Honolulu, HI 96813

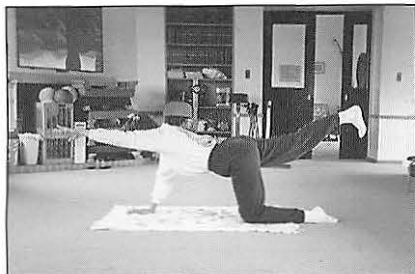
- PurchaseExpress[®]
- Rehab Express[™]
- Take advantage of today's low rates—refinance now!

FOR ADVERTISING IN

the Outrigger
the GRETCHEN DUPLANTY @ 737-5505

TIPS

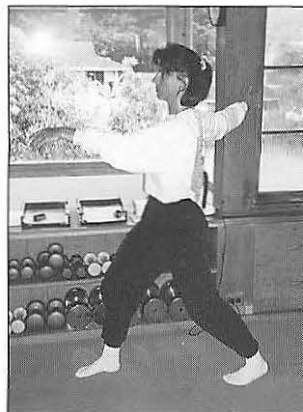
from the Trainer



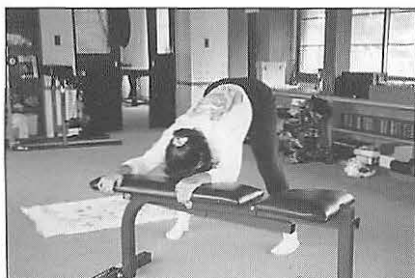
Super Person Pose



Peck Minor



Peck Major



Triangle Pose

Stretching Part Two

*By Sherry Gannaway,
Founder Body by You!®*

Welcome to Stretching Part Two! Learning and maintaining a stretching program is one of the main keys to healthy joints and peak athletic performance. The joint, by definition, is the point of contact between two bones and is made of bunch of avascular soft tissue (cartilage, fluids etc.), protected by ligaments and tendons.

Ligaments connect bone to bone and tendons connect muscle to bone. Due to the lack of blood flow within the joint, the joint is a slow healing unit. It's very important to keep them stress free, i.e. in balance.

Before starting any stretching program, I highly recommend to practice Joint Isolations: Pelvic tilt forward and back, Pelvic tilt side to side, Pelvic circles, Shoulder rolls forward and back, Shoulders go up and down, Neck up and down, ear to shoulder slowly—then the other side, finish with looking side to side in rotation of the neck.

These simple moves should be practiced throughout the day to keep the attachments surrounding the joints nice and loose. Use these Joint Isolations as part of your warm-ups and cool-downs before and after your favorite sports. Do them when you first get up in the morning and after a long day at work.

NOTE: For optimal sleep, sleep with a pillow under the knees to remove pressure from the lower back. Use a pillow between the knees to keep your lower spine and hips in a Neutral position.

Let's Stretch: Total running time 35 minutes

Warm-up Time 10 minutes

Start on a cardiovascular machine if you are in the gym, or walk in place and step together if you are training at home. Move your arms out together, reach and pull, raise above your head and down. Breathe. After 7 to 8 minutes, return to Neutral Strong Stance.

Repeat hip, shoulder and neck isolations. Finish with a full body contraction i.e.; reach your hands above your head, breathe slowly, with a bent knee touch toes. Exhale slowly and return to neutral.

The Program Time 20 minutes

Stretch #1 Super Person Pose

Position: With your towel on the floor go to your hands and knees. Stay square, keep your elbows slightly bent and abdominal in. On the exhale, slowly lift opposite arm to leg. Alternating from side to side, move slowly and with control on the lift. Hold the move four counts each lift. Repeat 16 times.

Stretch # 2 Standing Pectorals Minor Stretch

Position: Standing in Neutral Strong Stance, slide the leg closest to the doorway, or pillar back about two feet. Place your arm in a bent position from elbow to hand on the doorway or pillar. Keep the shoulders square on the exhale of the breath, while pulling your abs in. Push slowly forward. Hold the stretch for 45 to 90 seconds, then relax. You should feel this stretch all across the upper chest and into the shoulder. Repeat same side for a second set, then change arms and repeat.

Stretch # 3 Standing Pectorals Major Stretch

Position: Standing in Neutral Strong Stance, grab the doorway, or pillar with the hand closest to the unit. Step forward with the inside foot and reach out with the opposite hand. Keep

the shoulders square on the exhale of the breath, while pulling your abs in. Push slowly, reach forward and hold the stretch for 45 to 90 seconds, then relax.

You should be feeling the stretch throughout the entire chest region. Repeat same side for a second set, then change hands and repeat the entire set.

Stretch # 4 Beginning Triangle Pose

Position: Standing in a wide Neutral Strong Stance, with a weight bench in front of you, inhale. As you exhale, slowly roll down, placing hands shoulder width apart onto the bench. Pull abdomen in on the exhale to support your back. With a BENT knee, puff your tailbone up toward the ceiling and drop your head slowly toward the floor.

Keep a flat back, to restore the natural curve of the lower spine, and pull your abdomen in on the exhale of the breath. Hold the stretch for 45 to 90 seconds, then return to Neutral Strong Stance. Do a pelvic tilt forward and back, side to side, and circle four times in each direction.

Repeat position and tilts three times.


Cool-down Time 8 minutes

Position: Return to Neutral Strong Stance. Review all of the Joint Isolations. Start at the feet with heel and toe lifts, slowly go to knees, hips, spine, shoulder and neck. Finish with two to four full body contractions. Breathe and return to neutral.

In closing, Stretching is an art form all to itself and requires some effort to master. Please don't give up. Take classes, practice the tips programs, read books. Just Stretch!! Breathe slowly and control your moves. The return on your investment I promise will be ten fold.

Go team! O

A P R I L

Sunday	Monday	Tuesday	Wednesday	Thursday	Friday	Saturday
Easter Sunday reservations are necessary for both Brunch and Dinner Easter Bunny 9:00 - 12:00	1 Noon Bridge Hau Terrace Lunch and Dinner	2 Regular Lunch and Dinner Service	3 Regular Lunch and Dinner Service	4 Regular Lunch and Dinner Service	5 Regular Lunch HUKILAU SEAFOOD BUFFET Dining Room 6pm	6 Hau Terrace Lunch Regular Dinner Service Dancing 6:30 pm
7 EASTER BRUNCH 8:30 am  Prime Rib Buffet- Dining Room 6 pm	8 Noon Bridge Hau Terrace Lunch and Dinner	9 Regular Lunch and Dinner Service	10 Regular Lunch and Dinner Service	11 Regular Lunch and Dinner Service	12 Regular Lunch and Dinner Service	13 Paddler Registration Hau Terrace Lunch Regular Dinner Service Dancing 6:30 pm
14 BRUNCH 8:30 am Prime Rib Buffet Dining Room 6 pm	15 Noon Bridge Hau Terrace Lunch and Dinner	16 Regular Lunch and Dinner Service	17 Regular Lunch and Dinner Service Nick's Fishmarket GUEST CHEF NIGHT	18 Regular Lunch and Dinner Service	19 Regular Lunch and Dinner Service	20 Hau Terrace Lunch Regular Dinner Service Dancing 6:30 pm PADDLER KICKOFF STEAK FRY
21 Brunch 8:30 am Prime Rib Buffet Dining Room 6 pm	22 Noon Bridge Hau Terrace Lunch and Dinner	23 Regular Lunch and Dinner Service	24 SECRETARY'S DAY DINING RM BUFFET Regular Dinner Service	25 Regular Lunch LIVE MAINE LOBSTER Reserv. Dining Rm	26 Liz Claiborne Fashion Show Lunch Regular Lunch and Dinner Service	27 Hau Terrace Lunch Regular Dinner Service Dancing 6:30 pm Steak Fry 6 pm
28 Brunch 8:30 am Prime Rib Buffet Dining Room 6 pm	29 Noon Bridge Hau Terrace Lunch and Dinner	30 Regular Lunch and Dinner Service	Guest Chef Night on April 17, Eugenio from Nick's Fishmarket PADDLERS KICKOFF BARBEQUE APRIL 20 - ALL MEMBERS WELCOME FOR STEAK FRY Plan ahead-May 3 Mexican Buffet for Cinco De Mayo-Ole! May 6, Wine Tasting Party			

M A Y

Sunday	Monday	Tuesday	Wednesday	Thursday	Friday	Saturday
Wine Tasting and Pupa Party 6 pm Benefit for the Outrigger Duke Kahanamoku Foundation—Vast Wine Selection. PLEASE MAKE YOUR MOTHER'S DAY BRUNCH & DINNER RESERVATIONS EARLY			1 Regular Lunch and Dinner Service	2 Regular Lunch and Dinner Service	3 Regular Lunch MEXICAN CLUB BUFFET Dining Room 6pm	4 Hau Terrace Lunch Regular Dinner Service Dancing 6:30 pm
5 BRUNCH 8:30 am One person canoe Molokai to Oahu finish at OCC 2 pm Prime Rib Buffet 6 pm	6 Noon Bridge Hau Terrace Lunch and Dinner ODKF WINE-TASTING BENEFIT	7 Regular Lunch and Dinner Service	8 Regular Lunch and Dinner Service	9 Regular Lunch and Dinner Service	10 Regular Lunch and Dinner Service	11 Hau Terrace Lunch Regular Dinner Service Dancing 6:30 pm
12 MOTHER'S DAY BRUNCH 8:30 am Prime Rib Buffet Dining Room 6 pm	13 Noon Bridge Hau Terrace Lunch and Dinner	14 Regular Lunch and Dinner Service	15 Regular Lunch and Dinner Service	16 Regular Lunch and Dinner Service	17 Regular Lunch and Dinner Service	18 Hau Terrace Lunch Regular Dinner Service Dancing 6:30 pm
19 Brunch 8:30 am Prime Rib Buffet Dining Room 6 pm	20 Noon Bridge Hau Terrace Lunch and Dinner	21 Regular Lunch and Dinner Service	22 Regular Lunch and Dinner Service	23 Regular Lunch and Dinner Service	24 Regular Lunch and Dinner Service	25 Hau Terrace Lunch Steak Fry 6 pm Regular Dinner Service Dancing 6:30 pm
26 Brunch 8:30 am Prime Rib Buffet Dining Room 6 pm	27 HOLIDAY 9 am Memorial Service Hau Terrace Lunch and Dinner STEAK FRY	28 Regular Lunch and Dinner Service	29 Regular Lunch and Dinner Service	30 Regular Lunch LIVE MAINE LOBSTER Reserv. Dining Rm 6pm	31 Regular Lunch and Dinner Service	Memorial Day Service 27th, 9 am Bring Leis- light refreshments

Board Briefs

Board Briefs is taken from the minutes of the Board of Directors meeting on January 25, 1996 and the Executive Committee meeting on February 8, 1996.

Treasurer's Report—The board reconfirmed the scope of the Financial Committee to include the review of the Club's audit and insurance coverage on a regular basis.

Secretary's Report—Only delinquent balances in excess of \$25 count towards the number of delinquencies a member is allowed within a 12 month period before they are terminated. . . While reviewing the delinquent/termination list, the Board inquired on business and personal member accounts. The Controller explained that this arrangement for members had been done since he took the position. He will study it further and report back to the Board. . . Nine members were suspended for 15 days for being three times delinquent. Two members were terminated for being four times delinquent.

Athletic Report—The Board approved the purchase of the Club's third Force 5 canoe and cover. . . A new koa ama was approved. . . The purchase of two new paddleboards was approved. . . The canoe and kayak storage project is completed and the waiting list has been reduced from 200 to 60. The Club Captain recommended that the Board consider adding more storage racks, possibly devoting two more parking stalls to accommodate members in the near future. . . All requests for Athletic funding in accordance with approved athletic budgets must be accompanied by a purchase order. All

PO's over \$500 must be approved by the Club Captain and Coordinating Director prior to Business Office processing. . . It was approved to revise the 1996 Athletic Budget by transferring \$500 from "Other Athletics" to the Club Captain's budget. The additional \$500 is for compensation.

House Report—The Board revised its policy on smoking and will permit smoking on the Hau Terrace at four designated tables.

Long Range Planning Report—The Board revised its policy on the terms of members of the Long Range Planning Committee to the regular March to March cycle consistent with all other standing committees.

Public Relations Report—The Board approved the magazine review committee comprising of the General Manager, Editor and/or Assistant Editor, BOD representative and/or committee liaison, and Public Relations Chairperson.

Historical Report—The Board will recommend that William Barnhart and John Cline Mann be nominated for Life Membership at the Annual Meeting.

Admissions & Membership Report—All rejected applications will be stored securely in the Executive Office for no less than five years. Attached to said applications will be a cover sheet with a list of referenced names and members serving on the Admissions Committee at the time of rejection.

Judges of Election—John Nielsen was appointed to chair the Judges of Election Committee. Selected to serve on the committee are Leslie Deter, Robert Gifford, Kelly Hogan, Charles Meyer Jr., Kevin McCrary, John Nielsen and George Norcross. ☐

New Members

Regular—Samuel Caldwell, Curtis DeWeese, William Fiddler, Russ Francis, Jon Hunter

Intermediate—Brandi Watson

Associate—Greg Cochran

Junior—Jay Loui, Joshua Komer

Nonresident—Frank Karl

In Memoriam

Ruth Smith
Deceased: February 1, 1996
Member: 29 years

Cora Geneva Lyman
Deceased: September 12, 1995
Member: 12 years

Kathryne E. Kendall
Deceased: July 31, 1995
Member: 10 years

Employee of the Month

For the second time in one year, Steve Rivas is Four Employee of the Month. Last time he was a Hau Terrace waiter, and this time, he's called a "kitchen expediter."

What is that, you might ask? This appears to be the buffer between the cook and the waiters, and while we may not exactly understand it, his boss Liz Ventura does, and she loves Steve in this job.

Steve, an organized person, keeps a "kitchen calm," helps to speed up service and get the dishes out to the diners in a timely fashion. He makes sure the dishes are displayed and garnished correctly and serves as a spokesperson for the waiters in the kitchen.

With his experience on the Hau Terrace, and past experience elsewhere as a cook, Steve likes his new job. In fact, he's so relaxed and cool, that by the time you read this he will have gotten married to Penny, a Hau Terrace waitperson. He and Penny have known each other several years, both having come from Minnesota (where they both hated winters) and now they're a team. ☐

Princess Kaiulani



"Simple Elegance"

1222 Kaumualii St. Ph. 847-4806
Monday to Saturday 9-5

international buffets

1st Friday of every month



April 5 - Hukilau Seafood Buffet



May 3 - Cinco de Mayo Fiesta



June 7 - Hawaiian Luau

Make reservations with the Main Dining Room

Canoe Racing Registration

Help us defend our State
Championship

Sign up to be part of the OCC Team
Saturday, April 13, 9 a.m.-1 p.m.
OCC Board Room

Practice begins April 15 for
Age Group Crews
Adult crews look for practice notice
on Bulletin Board in the Tunnel

Everyone is Welcome! Make new
friends!



On the cover: Serving on the Board of Directors for 1996-97 are, seated, Liz Perry, Mary Philpotts-McGrath, Joyce Timpson and Michele St. John; second row, Jim McMahon, Tim Guard, Karl Heyer IV, Wendell Brooks, Peter Nottage; top row, Bob Moore, Brant Ackerman and Mark Buck. Not pictured: Hal Henderson. Photo by Marilyn Kali.

the Outrigger

Published by the
Outrigger Canoe Club

2909 Kalakaua Avenue
Honolulu, Hawaii 96815
Phone: 923-1585/921-1485
Dining Room: 921-1444
Beach Attendants: 921-1460
Logo Shop: 921-1432
Fax: 921-1414

Directors

Tim Guard, *President*
Brant Ackerman, *Vice President of Operations*
Mary Philpotts-McGrath, *Vice President of Activities*
Peter Nottage, *Treasurer/Finance*
Mark Buck, *Secretary*
Wendell Brooks Jr., *Assistant Secretary/Long Range Planning*
Robert Moore, *Assistant Treasurer/Historical*
Jimmy McMahon, *Admissions & Membership*
Liz Perry, *Athletics*
Harold Henderson, *Building & Grounds*
Karl Heyer IV, *Entertainment*
Joyce Timpson, *House*
Michele St. John, *Public Relations*

Standing Committees

Tom Merrill, *Admissions & Membership*
Ron Li, *Athletics*
Kurt Mitchell, *Building & Grounds*
Laura Williams, *Entertainment*
TBA, *Finance*
Chip Higgins, *Historical*
TBA, *House*
TBA, *Long Range Planning*
Al Serafin, *Public Relations*

Management Staff

John R. Rader Jr., *General Manager*
Gordon Smith, *Comptroller*
Donald Figueira, *Food & Beverage*
David Kuh, *Clubhouse Manager*
Patti Higuchi, *Executive Secretary*
Renee Humphrey, *Secretary*

Outrigger Staff

Marilyn Kali, *Editor*
Fax: 833-1591
email: OCCMag@aol.com
Gerry DeBenedetti, *Assistant Editor*
Gretchen Duplanty, *Advertising*
Phone: 737-5505



PRINTED ON RECYCLED PAPER

The Outrigger Canoe Club

2909 Kalakaua Avenue
Honolulu, Hawaii 96815

Bulk Rate
US Postage
PAID
Permit No. 174
Honolulu, Hawaii