

# William Barnhart and Cline Mann Selected for Life Memberships in the Outrigger Canoe Club

Two lifelong friends were elected to Life Membership at the annual meeting of the Outrigger Canoe Club on February 26, bringing the current number of Life Memberships in the Club to 11.

William "Whiskey" Barnhart, a Club member for 66 years, and John Cline Mann, a Club member for 50+ years, were honored for their lifetime contributions to the Club.

The award was recommended by the Historical Committee, approved by the Board of Directors, and ratified by the general membership at the Annual Meeting.

"We've been friends for as long as we can remember," they recalled after the meeting. "And we sure didn't expect this honor."

"We're second generation members," Cline said. "Bill's father was president of the Club and I served as president. We've both been involved in the Club's athletic programs and standing committees."

In the 1940s, Barnhart served three terms as chair of the Volleyball Committee, was Athletic Coordinating Committee Chair, and

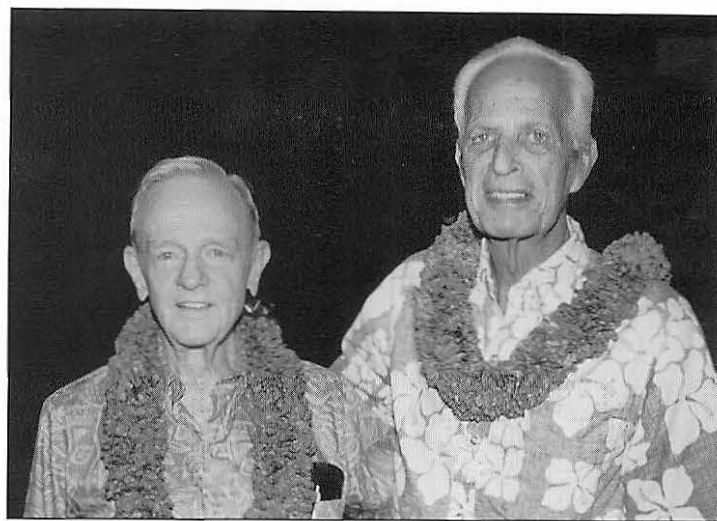
Club Captain. For 20 years, from 1948-1968 he was manager of the Club baseball team. In 1950, he was vice-chair of the Canoe Committee, and from 1951-53 was coach of the Wahine 6 volleyball team.

During 1940 through 1990, he became almost a permanent fixture on the Judges of Election Committee, including two years as chair.

He later served on the Historical Committee for seven years and was elected chair for seven months before he became ill and had to resign.

"I believe that Bill's chief contribution to the Club was in the near term that he served as chair of the Historical Committee," said Eugenia McMahon of the Historical Committee. "He sensed the need for computerizing the index files of the Photograph Subcommittee and appointed two new members, Paul Dolan and Tay Perry, both of whom are experienced in computer indexing. Paul's breakdown of the present index is currently being utilized in the transference to computer coding. He will next continue to computerize the Trophy index files as well. All this was set in motion by Bill Barnhart."

Cline is one of the most loved of all Club members. He has probably sponsored more Junior members for



*Bill Barnhart and Cline Mann were elected to Life Membership at Annual Meeting.*

membership than any other person. He has been a fixture at the Club for so many years that his routine is well known—there's "Cliner-time", lomi salmon and poi on Saturdays, afternoon naps on the beach, and friendship that crosses all age categories.

Having that first beer with Cline when you turn 21 is a ritual enjoyed by many. Anyone who has dared divulge the score of a Monday Night Football Game has felt the wrath of his stare and has never done it again!

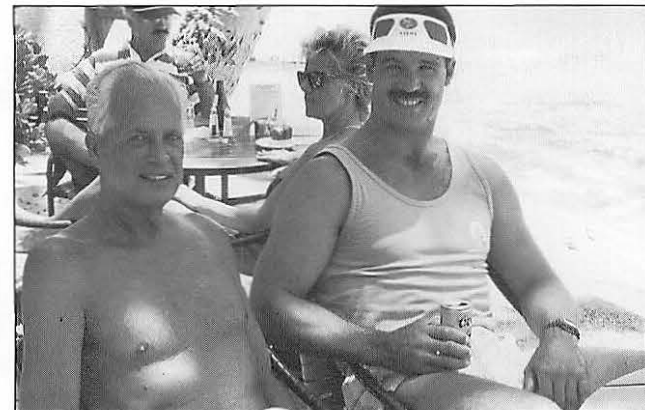
His recall of Club events is legendary and his willingness to share his knowledge has benefitted many of

the younger generation.

Cline's father, the late James B. Mann, a prominent Honolulu engineer and surveyor gave years of dedicated service to the Club. One of his important contributions was the planning and supervising of the construction of the 1940 building addition to the Club at its former location.

Following in his father's footsteps, Cline became a successful engineer and surveyor also—and a specialist in matters pertaining to Hawaii's lands. Like his father, he too, from an early age became intimately involved in the programs and activities of the Club.

With his background, it was only natural that when the Club was faced with the prospect of moving to a new location that Cline was encouraged to seek a seat on the 1959 Board of Directors. Appointed secretary, he immediately read the minutes of every Board meeting that was available. He served a year as a member of the New Club Planning Committee and then became its chairman. His outstanding work led to his appointment, when construction began in 1963, as chairman of the New Club Building Committee.



*Cline presents Cline Mann 5K Paddleboard Trophy at first race.*

*Cline enjoys his favorite brew at his favorite place on the Terrace with Russ Francis.*

A strict task-master, he required his committee (see the plaque at the entrance to the Club) to meet at least once a week—on site—with the architect and contractor to review, coordinate and monitor progress. This occurred during the entire nine months of construction. The excellent result of this effort speaks for itself.

In February 1964, following the Club's move to its present location, Cline served a term as president.

Cline's main forte, however, is his interest in and support of the athletic programs of the Club, particularly for its younger members. Water sports were his forte. Becoming a sailor only after the Club's move to its present site, he was Club champion in the Sunfish/Scorpion class during the late 60s and early 70s when the Club fleet consisted of more than a dozen boats.

He is probably best known for passing on his sailing skills to a multitude of younger members, some of them now champions.



*Joy and Bill Barnhart (center) enjoy dinner at old club.*

During a brief period in 1964, he participated in underwater speed swimming in which he distinguished himself.

Although never a paddler, he has been a helper on more than 25 Molokai to Oahu Canoe Races beginning in 1960, as well as nearly a dozen Molokai to Oahu Kayak races since 1979. His help with change charts (which he devised) and other

chores has been invaluable to our crews.

Over the years, Cline has served on many Club committees including the Sailing, Volleyball, Canoe Racing, Paddleboard, Building and Grounds and Admissions committees.

Cline served as Club Captain in 1965 and 1966 and for a period of seven years, represented the Club in the Hawaiian Canoe Racing Association.

After a three year absence from the Board of Directors, he returned to serve for five more years. Cline is a member of the only family to have representatives of three generations elected to the Board of Directors. His father was also a president and his niece, Cordy Dowsett MacLaughlin, was a Director. His record of perfect attendance for 10 years of Board meetings will be hard to beat.

Cline is the first to admit that he never paddled on a canoe team nor played on a Club team. However, he was awarded the Winged "O" on January 15, 1968 for his contribution to Club athletics.

In 1975, Cline organized the Club's Honolulu Marathon aid station on Kahala Avenue and directed its operations for 20 years.

Cline was also the inventor, builder (1970) and maintainer of the Club's canoe paddling trainer "Kekumuhoe'ana" (meaning pad-

dling teacher) located in the basement of the parking structure.

Since 1961 he has been a promoter of paddleboard racing and instrumental in the inauguration of the three annual races sponsored by the Club. While serving on the Paddleboard Committee in 1985, the other members of the committee, by deft maneuvering behind his back, and with Board approval, officially named the annual summer ocean race the "Cline Mann 5K". A handsome perpetual trophy bearing the name of the race contains the names of all winners of the race. It can be seen in the Lobby Display Case.

A founding trustee, along with Club past president Ward Russell, of the Duke Kahanamoku Foundation, he played an important role in the merger between the Outrigger Foundation and the Duke Kahanamoku Foundation to form the Outrigger Duke Kahanamoku Foundation in 1986.

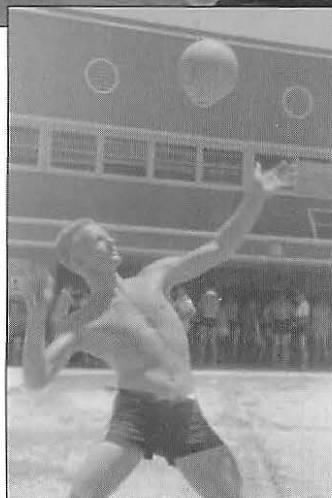
A walking encyclopedia of the Club's history and the genealogy of many of its longtime family members, Cline is particularly respected for his true "Aloha Spirit."

Both Bill Barnhart and Cline Mann have earned the honor of becoming Life Members in recognition of their many unselfish contributions to the Club.

Congratulations to both. ☺



*Cline operated the Club's Marathon Aid Station for 20 years.*



*Bill Barnhart*