

OUTRIGGER CANOE CLUB

OCTOBER

Forecast

1958



George Downing leaves a trail of foam behind him as he whisks across the shimmering wall of a breaker at Makaha.

IN THIS ISSUE—

OLD TIMERS FETED AT 50 YEAR LUAU
SURFERS AWAIT MAKAHA SEASON (Cover Story)
BOARD OF DIRECTORS REPORT
ALOHA WEEK OCT. 19-25
BIRTHDAYS, BRIDGE IN OCC NEWS

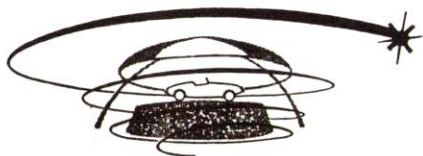
AT YOUR
SPORTS CAR CENTER

Now Available _____

THE NEW
Austin-Healey 100-Six



Take a turn at the wheel of the new Austin-Healey 100-Six either in competition or just for a family holiday spin. You'll be thrilled at its performance . . . and you'll appreciate the extra occasional seats!



Look for the Revolving Showroom

WEAVER MOTORS

704 Ala Moana

Phone 59-965



FORECAST

Issued by the
BOARD OF DIRECTORS

FORECAST — Ed Greaney, Chairman; Norman Godbold, III, Harvey Wilson, Pat Wyman, Traylor Mercer.

DIRECTORS

Here are the highlights of the Board of Directors meetings from the minutes thus far approved.

A report that non-members had paddled under the Outrigger Canoe Club banner at the Territorial Canoe Championships on Kauai was placed before the Board by Fred Hemmings.

Ward Russell, acting for club president R. Q. Smith in his absence, called a meeting of the board.

After due deliberation, the directors reprimanded Club Captain Ron Sorrell and Coach George Downing as disciplinary measure.

In other board action, directors approved the following recommendations set forth by Tommy Thomas of the House and Grounds Committee:

The purchasing and installation of 7 luau torches — cost not to exceed \$605.

Expenditure of \$350 dollars for a one year termite control service.

Purchase of a beer cooling system for the Hau Terrace.

Assorted locker room repairs.

OUTRIGGER CANOE CLUB

Founded 1908

WAIKIKI BEACH

HONOLULU, HAWAII

OFFICERS

RONALD Q. SMITH . . . President
MARTIN ANDERSON . . . Vice-President
J. WARD RUSSELL . . . Secretary
DR. STANLEY J. BEARDMORE . . . Treasurer

DIRECTORS

Martin Anderson	James Pflueger
Dr. Stanley J. Beardmore	Ward Russell
Dr. Irving Blom	Ronald Q. Smith
A. A. Carswell	Fred Steere
H. Vincent Danford	James C. Stopford
Wilford D. Godbold	Herbert M. Taylor
Duke P. Kahanamoku	Herbert Van Orden
E. S. "JAKE" TUDOR, General Manager	
CHARLES HEE, Admin. Asst.	

COMMITTEES FOR 1958

ADMISSIONS—Don Waggoner, Chairman; Dr. Irving Blom, Sponsoring Director; C. E. Ackerman, Jr., Neal Ifuersen.

BEACH SERVICES—Fred Steere, Sponsoring Director

BUILDING FUND—Leslie A. Hicks, Chairman; Herbert Taylor, H. V. Danford, Victor Kahn, U. J. Rainalter, LeRoy C. Bush

BUILDINGS AND GROUNDS — Ernest H. Thomas, Chairman; John Park, Vice-Chairman; A. A. Carswell, Coordinating Director; Robert Patrick, Cline Mann, Art Lange

BASEBALL TEAM—William M. Barnhart, Chairman

BY-LAWS—Fred Rohlfing, Chairman; Martin Anderson, Coordinating Director

CANOE COMMITTEE — Kenneth Pratt, Chairman; Charles Schrader

CLUB CAPTAIN—Ron G. Sorrell

DISCIPLINARY—John E. Parks, Chairman; Martin Anderson, Coordinating Director

ENTERTAINMENT — Harold Whitaker, Chairman; Ward Russell, Coordinating Director; Charles Schrader, James Hakuale, Jack Cross, Mesdames Jack Cross, Richard Dennis, Edward Fearon, Allen Ledford, L. H. Whitaker, Miss Gerri Galick

FINANCE—Ronald Q. Smith, Chairman; Judge Wilford D. Godbold, Dr. Stanley J. Beardmore, Martin Anderson, H. V. Danford, Herbert Taylor

HEAD COACH—George Downing

HAWAIIAN CANOE RACING ASSOCIATION—George Downing, Fred Hemmings, Ah Kong Pang

NEW CLUB BUILDING—James Stopford, Chairman; Louis L. Gowans, Fred P. Lowrey, Herbert Van Orden, Keith Wallace, Howard J. Bourell

VOLLEYBALL — Mark Auerbach, Chairman, Tom Haine, Gillie Halpern, Bill Danford, Marilyn Haine, Aggie Quigg, Gail Lange



Forecast chairman Ed Greany and advertising head, Harvey "Birdnose" Wilson left for Mainland vacations on September 19.

Greany, who is the financial editor for the Honolulu Advertiser will travel to New York, Washington and Philadelphia.

Wilson, a display advertising salesman for The Advertiser will travel along the West Coast with his wife and child.

Both are expected to return late this month.

* * *

Shirley Olds, formerly associated with the Lea Thropp, Limited, Real Estate Agency, has announced that she has gone into private practice. Her new number is 57571.

The Outrigger Canoe Club welcomes Brigadier General Paul T. Preuss, new base commander for the Hickam Air Force Base, and Major General Francis M. McAllister as new honorary members.

* * *

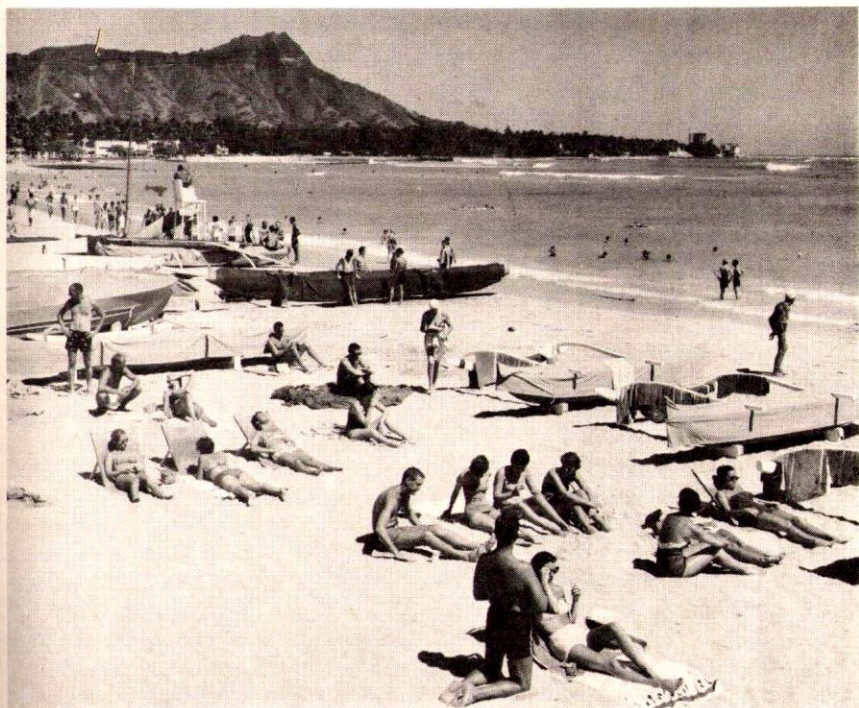
"At home" in San Francisco are Mr. and Mrs. John Wade. She is the former Colleen O'Leary. The couple were married on August 29 in Honolulu.

* * *

Newlyweds in Washington, D.C., are Mary and Dennis O'Connor. Mrs. O'Connor is the former Mary Peden, a member of the OCC girls paddling team. The couple were married in Los Angeles on August 30. Pat O'Connor served as his brother's best man and Johnny O'Connor and John Steadman were ushers. Dennis, a Navy lieutenant, is currently stationed in the nation's capital.

OUTRIGGER CANOE CLUB STATEMENT OF INCOME AND EXPENSES Fiscal Year Beginning November, 1957

Income	July	Aug.	Year to Date
Dues	\$ 7,651.93	\$ 6,833.85	\$ 69,447.13
Food	14,541.81	14,806.43	117,934.29
Beverage	16,544.81	13,742.36	97,011.71
Fountain	4,347.20	4,374.93	26,436.23
Others	8,142.38	7,836.20	48,177.39
Total Income	\$51,228.13	\$47,593.77	\$359,006.75
Cost of Income	16,014.95	14,549.37	106,199.66
Gross Profit	\$35,213.18	\$33,044.40	\$252,807.09
Operating Expenses			
Salaries and Wages	\$16,489.39	\$16,509.26	\$138,118.20
Employees Meals	1,365.00	1,373.00	12,193.00
Supplies	900.00	900.00	9,000.00
Music and Entertainment	865.00	1,044.11	5,075.35
Rent	666.66	666.66	6,666.60
Taxes	2,006.20	2,663.83	21,193.84
Insurance	475.34	470.48	4,396.59
Repairs and Maintenance	631.02	1,023.49	5,241.71
Others	5,075.59	5,666.34	43,603.66
Total Operating Expense	\$28,474.20	\$30,317.17	\$245,488.95
Operating Profit	\$ 6,738.98	\$ 2,727.23	\$ 7,318.14
Depreciation	2,427.91	2,427.91	24,279.10
Profit or (Loss)	\$ 4,311.07	\$ 299.32	(—\$ 16,960.96)



Waikiki—Fall, 1958: The beach which just a few weeks ago was teeming with vacationing college and high school youngsters, settles back to being its normal, quiet self with only a few registrants utilizing the sun during their last free moments.

Emmie and Ernie White have returned to the Islands to make their home after an absence of $3\frac{1}{2}$ years. Ernie is Pacific Sales area Manager for Fibreboard Paper Products Corp. of San Francisco.

* * *

We enjoyed having Lucille and Bob Johnston of Los Angeles with us this past month. Being good friends of Bill Capp and Pat Patterson they have made numerous trips to visit their friends here at the Outrigger. The Johnstons depart via the Hawaiian Rancher, visiting Kauai and Hilo.

* * *

Peter Coleman, governor of Western Samoa, was a recent guest of Mr. and Mrs. Douglas Freeth for dinner in the Outrigger Dining Room.

Popular vocalist Tony Martin and his lovely actress wife Cyd Charisse spend much of their island vacation relaxing in the Hau Terrace. Island interpreneurs are hoping Martin will play an engagement soon at the Royal Hawaiian Hotel.

* * *

Mrs. Wendell Brooks, chairman of the women's committee for the Honolulu Community Theatre, planned a luncheon for 54 members of the theatre group on September 20. Many of the guests arrived early to play bridge on the club sundeck.

* * *

The wife of Rear Admiral Robert F. Hickey, commander of Fleet Air Hawaii, recently gave a luncheon for 23 in the club dining room.

OCTOBER CALENDAR 1958

SUNDAY	MONDAY	TUESDAY	WEDNESDAY	THURSDAY	FRIDAY	SATURDAY
			1 Duplicate Bridge 7:30 Dinner 6:30 Terry Pepin at Piano 6-10 p.m.	2 Dinner 6-8:30 Buffet \$3.00 Bingo at 8:15 Terry Pepin at Piano	3 Andy Cummings music 3-6 p.m. Happy Hour, 4-6 p.m. Drinks 40c Beer 25c Dinner 6-9 p.m. Terry Pepin at Piano 6-10 p.m.	4 Dinner 6-9 p.m. Music by Marion Diamond group 7-10 p.m.
5 Family Nite Buffet Dinner 6-9. Adults \$3. 6-12 yrs. \$1.50 Under 6 free Music by Danny Kinilau 3-7 p.m.	6 Dining Room Closed Snack Bar Open 9-5 Bar Open 11:30-9 p.m.	7 Dinner Hour 6-8:30 Terry Pepin at Piano 6-10 p.m.	8 Ditto	9 Dinner 6-8:30 Terry Pepin at Piano 6-10 p.m.	10 Ditto	11 Ditto
12 Ditto	13 Ditto	14 Ditto	15 Ditto	16 Ditto	17 Same 3 to 6 program with Happy Hour 4-7 PLUS Old Timer's LUAU 7-9 Dancing 8:30-12	18 Ditto
19 Ditto	20 Ditto	21 Ditto	22 Ditto	23 Ditto	24 Andy Cummings music 3-6 p.m. Happy Hour 4-6 p.m. Drinks 40c Beer 25c Dinner 6-9 Terry Pepin at Piano 6-10 p.m.	25 Ditto Buffet \$3.00 Bingo at 8:15 Terry Pepin at Piano
26 Ditto	27 Ditto	28 Ditto	29 Ditto	30 Dinner 6-8:30 <i>Bingo</i>	31 Times Party. Beer by the pitcher \$1.50. Halloween Hard Prime Rib Dinner 6-8 \$3. Music by Randy Oness for dancing 8-12	

ALOHA WEEK BIGGEST YET

Waikiki begins primping soon for one of its most busy and event-packed weeks of the year—Aloha Week, October 19-25.

Here is a partial list of events for the week.

Oct. 17—Old Timers Luau at OCC, Happy Hour, Music, Roasting, Dancing.

Oct. 18—Dockside ceremonies for arriving liners Orcades and Matsonia. Hawaiian Show at the Hawaiian Village at 10 a.m. Preparations festivities on Molokai for paddlers departing in the annual race to Oahu. Dinner and dancing in the Outrigger Dining room.

Oct. 19—The race begins at dawn, with canoes arriving at Duke Kahanamoku Beach at about noon, greeted by Aloha Week court. Aloha Week buffet at the OCC. Music from 4-8 p.m. by Dan Kinolau.

Oct. 20—Polynesian demonstrations at the Hawaiian Village. First of daily shows downtown at Bishop Street and Waikiki at International Market Place at 2 p.m.

Oct. 21—Dinner at the Outrigger 6-9 p.m. try the lau-lau, lomi salmon and poi, then attend the old Hawaiian Pageant at the Waikiki Shell, 8 p.m.

Oct. 22—Aloha Week bridge night on the sun deck. Hula Festival at the Shell.

Oct. 23—Buffet Supper at the Outrigger, Aloha Shirts, please. Iolani Palace pageant depicting old costumes of Hawaii, climaxed by the reenactment of the coronation of King Kalakaua and Queen Liliuokalani.

Oct. 24—Happy Hour, Andy Cummings group playing favorite Aloha Week songs. Youth Night at the Waikiki Shell 8 p.m., coronation of Prince and Princess.

Oct. 25—Aloha Week Parade 10 p.m. downtown. Aloha Week Ball at the Royal Hawaiian Hotel.

OLD TIMERS LUAU

One hundred of Waikiki's colorful "Old Timers" will be honored at the Outrigger Canoe Club's gala 50-year celebration on October 17.

Early enthusiasm for the party indicates that it will be one OCC event just not worth missing.

A full house of 500 is expected and club members remembering how fast tickets for the last luau went have begun filing reservations for the "Old Timer" party.

Here's part of what to expect:

A happy hour, three Hawaiian music groups, dancing under the stars and outstanding kanaka kuisine.

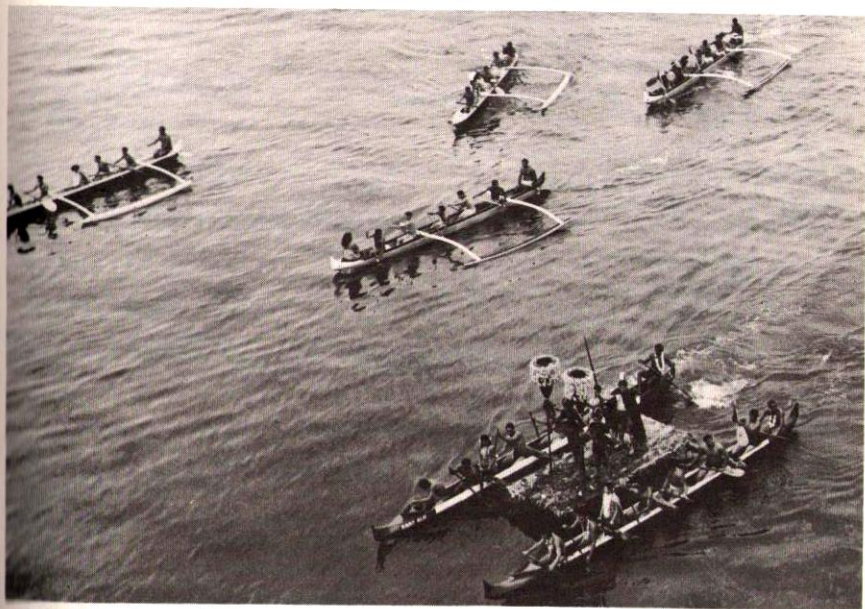
"Happy hour" will kick off festivities at 4 p.m. with drinks reduced to 40 cents and beer to 25 cents. Music will be furnished by "Oldtimer" Andy Cummings and his quartet.

Kalua pig, lomi salmon, poi, haupia, and all of the delicacies that make a luau a luau will be served between 7 and 9 p.m. Continuous entertainment by "youngsters" and "oldtimers alike will last throughout and more than one impromptu hula is expected.

Elmer Lee and his hula troupe, a perennial favorite in the islands, will be on hand during the luau.

The celebration carries over into the sundeck where members will dance 'neath Hawaiian skies to the music of Randy Oness.

It will be one night you just won't forget. And already tickets are going fast. They're only \$4.00 per person so make your reservations now!



Aloha Week Royalty in an offshore greeting of the Lurline. Such pageantry will mark the annual festival October 19-25.

CLUB MEMBERSHIPS

Class	Age or Income Bracket	Initia- tion Fee	Transfer Fee Member for less than two years	Dues per Month
JUNIOR ASSOCIATE	10 through 17.....	\$36.00	\$ 24.00	\$3.60
	18 through 22—or wife of member, (Excep- tion) Anyone still at- tending school and single	60.00	180.00	3.60
REGULAR	Over 22	240.00	6.00
SERVICE	In Armed Forces	60.00	180.00	6.00
	(Officer)		plus assessment of 2.50	
SERVICE- ASSOCIATE	Wife of Service member	60.00	180.00	3.60
NON-RESIDENT	Visitors not longer than 6 months in a year on the Island of Oahu, or Territory..	120.00	120.00	7.20 (while here)
ISLAND	Residing in Territory outside of Island of Oahu	120.00	120.00	1.20
	Miscellaneous Charges			
GUEST CARDS:	\$3.00, with exception of June, July and August when they are \$5.00 to members. When member is not paying for the card it is \$5.00, and \$10.00 during the June through August period.			
TEMPORARY DUES:	\$6.00 per week, and \$18.00 per week during June, July and August.			
LOCKERS:	Half-lockers—\$6.00 per year. Full lockers—\$12.00 per year. 'A' lockers—\$15.00 per year. Surfboard lockers—\$12.00 per year.			



After bowling a game



or golfing fun



Catching a fish

or swimming like one...

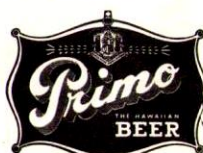


There's nothing better for refreshing cheer
Than a frosty cold drink of Primo Beer



Famous "at-the-brewery"
flavor in bottles or
America's first aluminum
Shiny Steinsys.

HAWAII BREWING CORP., LTD.



HONOLULU, HAWAII



Membership Approval

For Membership approval of Board
of Directors Aug. 26, 1958:

Regular

Ed Jeffrey
Norton R. Langley

Associate

Charles Poole
Dodd Balock

Service

Col. Wm. F. Barns

Junior

Anne Sloggett
Kathleen V. Cabot

Non-Resident

David May
New Members as of Sept. 17, 1958:

Regular

Miss Jo Shaw
Fred T. Butler

Service

Col. Rolland B. Sigafoos
Col. Gilbert N. Adams

Junior

Penny Oliver
Michael Oliver
Jerrald J. Schnack
Michael J. Nuzzo

Non-Resident

Germaine Savoie
A. A. Burnand, Jr.
Mrs. Bette Dillingham

Forecast Advertising Rates

Full Page	\$50.00
1/2 Page	30.00
1/4 Page	20.00
1/8 Page	12.00

December Issue Color

Page Ads 50% additional

BUSINESS DIRECTORY OF O.C.C. MEMBERS

A Ready Reference for You

AUTOMOBILES

"CHUCK" WEAVER

*Austin • Austin-Healey
MG • MORRIS*

704 Ala Moana—Phone 59-965

INSURANCE

W. C. "BILL" MORRIS

*All Kinds of Insurance
Prudential—Honolulu 51-946*

RESTAURANTS

SPENCE & CLIFF WEAVER

Spencecliff Restaurants, see back page

"GRANNIE" ABBOTT

"TRADER VIC'S"
926 Ward St.

LINEN SUPPLY

JACK MAGOON

*Hawaiian Linen Supply
837 Kawaiahao St.*

REAL ESTATE

SHIRLEY (MRS. PAT) OLDS—

LEA THROPP, LTD.

Office 57-571—Home—773-130

DAIRY PRODUCTS

**DAIRYMEN'S PROTECTED MILK
AND MEADOW GOLD
ICE CREAM—996-161**

DEEP SEA FISHING (Kailua Kona)

"KAKINA"

(JOHN HONL, CAPTAIN)

*Radio Telephone—Twin Engine
Coast Guard Inspected*

Telephone Kona 242-315 or Kona 256-325

Here in Hawaii Nei folks like to know
with whom they are doing business. Other
things being equal, they would prefer to
do business with their friends—including
fellow Club members of the O.C.C.

So you know just who offers the products
or services you need, the "FORECAST"
publishes this directory.

VOLLEYBALL PATTTER

The Outrigger Canoe Club's men's novice volleyball six enters its final test of the regular 1958 season still protecting a thus far unblemished record.

However the novice team will be without the services of three of its top hitters for the round robin championship series.

Woody Godbold, Al Lemes and Richard Sylva have all returned to their studies at mainland colleges.

With their sights on the city trophy, coach Doc Beardmore has knocked down the squad to scrimmaging with the club's open volleyball six.

In the women's novice division, the OCC six is tied for second place. The final round of the novice tourney will decide who qualifies for the round robin matches.

Spectators say that the girls have improved steadily throughout the season and chances for a title year are apparently good.

The volleyball committee is calling

for recruits into the senior women's volleyball team which opens its season this month. The tournament will be played under modified AAU rules.

A new ruling governing the borrowing of new volleyballs from the club office is being tried out. New balls should be signed out with whoever is on duty and checked in upon return.

REMINDER

Your Canoe Committee is developing an up-to-date list of qualified canoe steersmen. If you consider yourself qualified to steer a canoe in the surf, please register on the list at the lobby desk.

A qualifications committee consisting of Toots Minvielle, Steamboat Mokuahi and Bill Prange will review all qualifications. On 1 November 1958 a list of eligible steersmen will be placed at the Beach Services Office, after which date canoes will not be released to persons not listed as qualified.

Velzy & Jacobs SURFBOARDS

*"The greatest name
in surfboards"*

Sold Exclusively by

JIMMY PFLUEGER

Phone 91-141

or Outrigger Canoe Club



HAPPY 68th, DUKE

(Reprinted from the Honolulu Advertiser)

Duke P. Kahanamoku, the man who became Hawaii's best known citizen 46 years ago by sweeping swimming events at the Olympic Games in Stockholm, is 68.

He celebrated his birthday . . . at Kona, on the water he has loved since his boyhood at Waikiki. The difference is that now he's piloting an out-board-powered catamaran that's his current pride.

It's a wonderful device, says Duke. For it's a fine fishing boat, and you can surf with it almost as well as with a board.

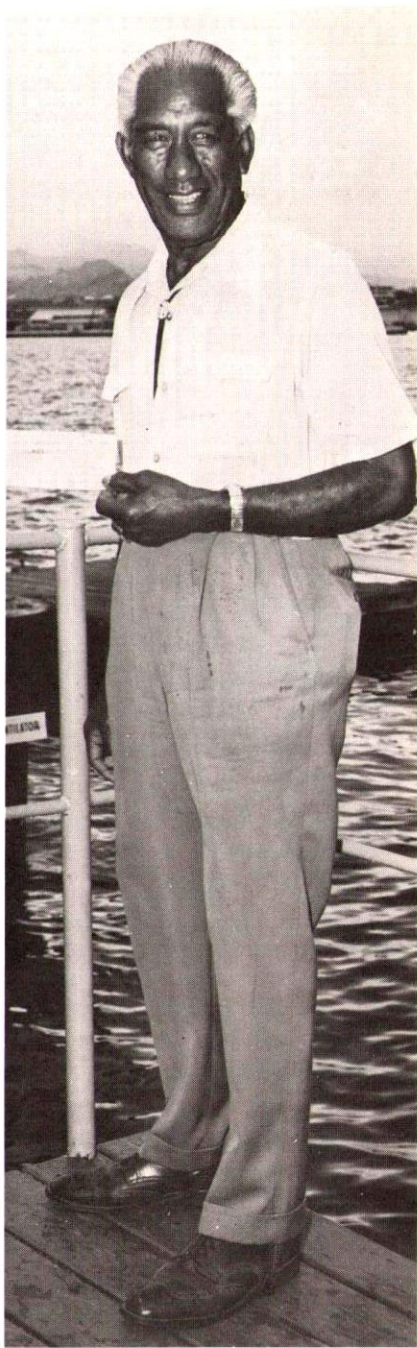
Duke became a world figure—one who caught the imagination of Europeans and Americans alike—when he broke the records for the 50 yard, the 100 yard and the 100 meter freestyle events at the 1912 Olympics.

His achievement caused jubilation in Hawaii, but it was no surprise. For he had broken world records over the same distances the year before, on Aug. 12, 1911, swimming in Honolulu Harbor. His times then were so startling that the AAU at first declined to credit them, though they were recorded by five qualified timers.

Duke, the eldest of six sons, was named for his father, who was a captain of the Honolulu police department by the time Duke smashed the records in Stockholm. "He's a pretty good boy," said Capt. Kahanamoku.

Duke kept his Olympic crown until 1924, when Johnny Weissmuller came along, and he continued competition until 1932, when he was a gray-haired member of the U. S. water polo team at the games in Los Angeles.

He appeared in movies, he saved eight lives in a California yacht disaster by "using a few tricks" with his surfboard, and he's been sheriff of Honolulu since 1934.



He's still Hawaii's best known citizen.



An OCC surfer skims across a 25 foot breaker at Makaha.

MAKAHA SURF SEASON APPROACHING

It's still a month away, but you can feel the big surf season at Makaha approaching.

Boards are disappearing from their lockers for touch up jobs at home or in the club shop.

Records of big surf in past years are thumbed over daily, the surf watching fraternity is out in full force.

November to them is like Christmas early—and every day. It means breakers up to 25 and 30 feet crashing on the leeward side of the island in quiet Makaha.

Winter surf! It rises comparatively close to the Makaha shoreline, then crashes into a half moon shaped cove that provides a natural grandstand for sun shaded spectators, a "natural" for the international championships.

Already surfers have met to put their stamp of approval on the entry fee for the sixth annual championships at Makaha November 22-23 and 29-30.

More than 150 of the top surfers from Hawaii, California and assorted surf capitals are entered annually in the "big surf's" peak.

And the Outrigger is expected to enter its usual raft of outstanding performers including perennial men's open champion, Rabbit Kekei, Black-out Whaley and Gilly Halpern, Bill Danford, and Tim Guard in men's junior events. Cynthia Hemmings is a yearly standout in the women's division.

Other events listed for the meet are mixed tandem riding, body surfing, and mat surf riding.

Youngsters ruefully watch their peers from the shoreline. But surfing has not excluded them. The champions they watch were learning to handle boards at ages 6 to 9.

George Downing, Outrigger canoe and surf coach, and perhaps Hawaii's most outstanding surfer of modern times, took a break between sanding and surfacing boards to unravel a schooling program for the clubs eager-to-learn youngsters.

"I'm going to take the kids out to Makaha and Haleiwa and all of the other big surf spots on weekend trips. It's better to take them out there and show them, you know, than to have them try for themselves.

"We'll show them how, point out the danger spots and different types of waves," Downing said. He smiled:

"You know, if you don't, they're going to go right out and try for themselves—without supervision.

"It's better this way—surfing's for everybody, especially kids."

NEW SURF COMMITTEE

A five man committee of Outrigger members has been formed to establish and oversee the mechanics of the forthcoming international surfing championships at Makaha.

The birth of the committee—the first of its kind—came out of a proposal by the Waikiki Surf Club, annual sponsors of the surfing championships.

Named to the committee were Ron Sorrell, Johnny McMahon, George Downing, Doug Forbes, and Wally Forsieth.



Surfing enthusiasts will see performers like Ed "Blackout" Whaley and George Downing of the Outrigger in action at the Sixth Annual International Surfing Championships at Makaha, November 22-23 and 29-30. George, who is holder of numerous American, Hawaiian and world titles, was recently named to the supervisory committee for the event. Past visitors to the Makaha event will remember "Blackouts" form and grace in being a perennial contender.



Dr. and Mrs. G. F. Straub, long time Outrigger members, are nightly diners in the Outrigger's redecorated dining room.

DUES HIKE COMPARED

Remember the recent hike in the Outrigger Canoe Club's monthly dues assessments? You might like to check it against similarly ranked private clubs on the mainland.

A survey conducted by Horwath and Horwath, consultants in the hotel and private club field, recently appeared in the September 6 issue of Business Week magazine. In part, here are the firm's findings:

"The survey found that if a member of a medium-sized 'average' paid \$500 in 1957 dues, \$205 of his money went to make up losses from club-house operations (mainly bar and dining room); \$155 went for golf and ground expenses; \$10 covered miscellaneous outside activities; \$80

was used to pay off fixed obligations, and \$50 was left over for depreciation and other purposes.

"Generally, most departments of a . . . club-bar, dining room—are not self supporting and must draw on dues income to break even.

"Of the 52 clubs surveyed, 11 levied special assessments in 1957. However, most of the 11 clubs limit their dues and regularly use assessments to make up operating losses. None of the remaining 41 clubs found it necessary to levy assessments.

"Only eight of the 52 increased their annual dues—with the boosts in a range from \$12 to \$120. Initiation fees were raised by 10 clubs—\$30 by two clubs, \$100 by two, \$150 by one, \$250 by one, \$500 by one and \$1,000 by three."

Dinner Menu

Today's Special

1. Roast Loin of Pork, Apple
Sauce \$2.25
2. Grilled Calf's Liver, Fried
Onions, Rasher of Bacon 2.35
3. Chicken Curry, Rice and
Chutney 2.40

3

Table d'Hote

CHOICE OF

- Soup Du Jour, Chilled Orange Juice, Fresh Fruit Cocktail,
Chilled Fresh Papaya Nectar with Lemon Wedge
Domestic Sherry 40¢
Fresh Seafood Cocktail 90¢

WE TAKE PRIDE IN RECOMMENDING OUR SPECIALTY

No. 1 FROM THE BROILER

NEW YORK SIRLOIN STEAK (14 oz.) on PLANK—\$4.75

- With Fresh Mushrooms
Garnished with Crispy French Fried Onions
Golden Ripe Broiled Tomatoes, Chef's Salad Bowl
Garlic French Bread Baked Idaho in Foil
Coffee, Dessert Du Jour

No. 2 FROM THE BROILER—\$4.25

- New Zealand Lobster Tail on Plank
Broiled to a Gourmet's Taste
Topped with Ocean Fresh Prawns
Baked Idaho in Foil Chef's Salad Bowl
Garlic French Bread
Coffee, Dessert Du Jour

NO. 3 STUFFED SQUAB CHICKEN on PLANK— \$3.75

- With Mushrooms
Stuffed Broiled Tomato Fresh Garden Beans
Chef's Salad Bowl Garlic French Bread
Coffee, Dessert Du Jour

A LA CARTE FROM THE BROILER

- | | |
|--|--------|
| No. 1. New York Cut Sirloin Steak with Mushrooms | \$3.00 |
| No. 2. Filet Mignon | 3.00 |
| No. 3. Eastern Prime Top Sirloin Steak | 2.75 |
| No. 4. Double Cut Lamb Chop | 2.75 |
| No. 5. Lobster Tail, Drawn Butter | 2.75 |
| No. 6. Eastern Roast Prime Ribs of Beef, Au Jus, (Friday only) | 2.75 |
| No. 7. Salad Bar Dinner | 1.50 |

ENTREES

- | | |
|--|------|
| No. 8. Filet of Mahimahi Saute, Tarter Sauce | 2.00 |
| No. 9. Fresh Fried Spring Chicken, Pan Gravy | 2.00 |
| Soup Du Jour | .25 |
| Mashed Potatoes | .25 |
| COFFEE OR TEA: Hot or Iced | .15 |
| Pies or Cake | .25 |
| Buttered Vegetables | .25 |
| French Fried Potatoes | .25 |
| Milk | .15 |
| Sherbet or Ice Cream | .15 |

Rolls and Butter

SANDWICHES

- | | | | |
|--|--------|---|-----|
| 1. Hot Roast Beef Sandwich,
Mashed Potatoes, Gravy | \$1.75 | 13. BEACH BOY, Tuna Salad,
Mayonnaise, Sliced Tomato, Egg
Salad on Special Roll | .95 |
| 2. Double Deck Club House
Sandwich, Sliced Chicken,
Bacon and Tomato | 1.20 | 14. Mahimahi | .65 |
| 3. American Cheese | .30 | 15. Hamburger DeLuxe, Served on
Sesame Roll with French
Fried Potatoes | .75 |
| 4. Ham | .50 | 16. Cheeseburger DeLuxe, Served on
Sesame Roll with French
Fried Potatoes | .85 |
| 5. Chicken | .65 | 17. Eastern Choice Steak | .90 |
| 6. Tuna and Tomato | .40 | 18. Ham and Egg | .65 |
| 7. Deviled Egg | .35 | 19. Bacon and Egg | .65 |
| 8. Ham and Cheese | .60 | 20. Bacon and Tomato | .55 |
| 9. Roast Beef | .65 | 21. Denver | .65 |
| 10. Swiss Cheese | .35 | | |
| 11. Lettuce and Tomato | .35 | | |
| 12. OUTRIGGER, Sliced Turkey, Lettuce,
Mayonnaise, American Cheese,
Tomato and Crisp Bacon
on Toasted Bread | 1.20 | | |



Wednesday night Duplicate Bridge Tournament players concentrate on the all important hand. Mrs. Harvey, table right, assists players at the table of Mr. and Mrs. Gerald Pool, chairman of the Honolulu Contract Bridge League.

DUPLICATE BRIDGE POPULAR . . .

The great flow of interest in Wednesday night Duplicate Bridge games has touched off the addition of Duplicate Tournaments to the Outrigger Canoe Club's day to day activities.

Special dinners at \$1.50 are being provided for the players.

Handsome prizes have been offered to tournament winners.

A new game time of 7:30 p.m. has been instituted in order to make for an earlier evening.

Recent Tournament winners are:

August 20: Pat Hass, Mrs. Randolph Moore.

August 27: Capt. and Mrs. Kraus.

September 3: Marion Pearson, Esther Darrow (North-South); Harold Pulliam, Jeanette Ness (East-West).

September 10: Lee Crowell, Dr. Frank Bruce. Third Wednesday, Master Point Games.

Further information concerning the Duplicate Bridge Tournaments may be obtained by calling Mrs. Verne Hass 990129; Mrs. Harold Pulliam 7-5222; Mrs. D. F. Darrow 941100; or Mrs. J. C. Harvey 76519.

Bridge Nites

Oct. 2, 9, 16, 23, 30

Dinner 6:30

AVENT CONSIDERING NEW PROPOSAL

California financier John V. Avent has asked Outrigger Canoe Club directors to consider a new proposal before moving from its present location.


Present club plans have called for the shifting to the Elks Club site near the natatorium and constructing a \$750,000 dollar clubhouse and accompanying facilities.

The date for the shift was set for 1963 when Mr. Avent withdrew his earlier proposal to buy the remaining time on the Outrigger lease for \$200,000 and help the club to garner a loan of another \$200,000. But the deal apparently fell through when the Matson Navigation Company asked for \$100,000 for its consent to the arrangement, Mr. Avent said.

He has indicated to club directors that he has a new proposal in the offing. The details have not yet been disclosed.

Both Mr. Avent and Paul Trousdale of the Waikiki Development Company said "We hope to work out some type of agreement with the Outrigger Canoe Club whereby the club will be furnished with suitable new club facilities."

Both Mr. Avent and the architectural firm of Law and Wilson have confirmed that three large mainland oil firms and a number of insurance companies have expressed interest in leasing apartment in the \$3,000,000 cooperative luxury apartments that the California businessman has planned



HAWAIIAN TRUST

Investments • Real Estate
Estate Planning
Property Management
Phone 5-1941
1010 Richards St., Hon., T. H.

Slimming or Surfing
You Need the Energy

Snowflake

Provides.

New in Hawaii:

San Francisco Style
Sour Dough Bread
Bohemian Pumpernickle
Rye
Kosher Style Sour Rye
Old Fashioned White

Snowflake is the Ideal Energy
Food for all types of Diets,
particularly for reducing diets

**Snowflake Bakery Corp.
of Hawaii, Ltd.**

One of Hawaii's Largest Bakeries

for the present Outrigger Canoe Club site.

President R. Q. Smith told Mr. Avent that the Outrigger Board of Directors will establish a committee to consider such a proposal if it was put in detailed form before them.

In addition, Ward Russell, acting club president in the absence of Mr. Smith and vice president Martin Anderson said: "We will listen to a proposal if it is in the best interest of the club."

YOUR AD

REACHES 2300

*members and their families
if it is in the*

"FORECAST"

E. S. "Jake" Tudor
Advertising Manager

ENTERTAINMENT COMMITTEE LAUDED

The staff of the Forecast this month salutes Hal Whittaker, chairman of the revamped entertainment committee.

Members of long standing as well as recent initiates have had nothing but praise for the work done by the committee in adding a very perceptible (and financially successful) spark of life recently instituted in the club's entertainment calendar.

Saturday and Sunday afternoons have brought record crowds to the

"jumping" Hau Terrace. More than two hundred were counted during last Sunday's cocktail hour. Twice that number have constantly been in evidence at the Friday afternoon Happy Hours.

A brand new salad bar in the dining room, tasteful decorations and a round of novelty events have brought back "nearly dead" members into the realm of the living.

"It's a whole new club" remarked one.

And hats off to Hal and his committee.



Bud ...on Draught

"Have a pitcher"

Budweiser LAGER BEER

Anheuser-Busch, Inc. • St. Louis • Newark • Los Angeles

JOHNSTON & BUSCHER, LTD.
HONOLULU • HILO • KAHULUI • LILUAE

TRY

HAWAII'S FINEST DRY CLEANING

BY



AMERICAN *Sanitary* LAUNDRY

DRY CLEANERS AND RENTAL OF LINENS

Since 1900



Mr. and Mrs. Bill Barnhart, Mr. and Mrs. George Cook and Tommy Thomas "joust" beer mugs in a toast at the club's stew, rice and beer party.



Jack and Marcia Cross step back for seconds from the stew pot. The Crosses were among a capacity turnout that attended the club's old fashioned stew and draught beer party on 1st month.



Harry Robello and Phyllis Spitz blow out the candles on their pink elephant adorned birthday cakes. Earl King, Panama Dave Baptiste, Jerry MacDonald, and Jimmy Hakuole glow their approval with an assortment of expressions.

AGE? 39, OF COURSE?

Birthdays of familiar faces along Waikiki seem to have two things in common—they all happen at the same time and everyone is the same age, "jus' 39."

Turkey Love, who is now an "alii" with the Hawaiian Village Beach Staff, got the birthday ball rolling with his "honest to goodness" 39th celebration.

Then came Chick Daniels, who is perhaps the "Jack Benny" of them all. Chick and a number of his beach pals honored his birthday in royal fashion.

Steamboat Mokuahi, the OCC Beach Service captain, tossed a party for his "Missus" on the beach. Mrs. Mokuahi, better known as "Sugar," was piled to her eyes with leis by friends and relations.

To round out the long list of birthdays so close together, Johnny McMahon honored recently returned Harry Robello and Phyllis Spitz with a splash at his Niuiki Place home.

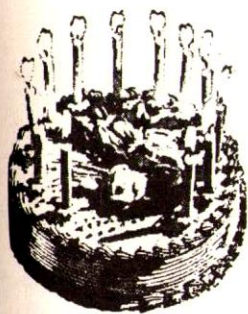
Until next year (or next week) the Outrigger bids them the merriest of birthdays.

Don't forget the

Halloween

Hard Times Party

Oct. 31



Hauoli La Hanau Aloha Nui Loa

We extend hearty greetings and "Happy Birthday and best wishes to you" to all Club members whose birthdays occur in November.

Nov. 1st

Caroline Granelli
T. J. S. Muirhead, Jr.
Mrs. Anne A. Smith
Frederick M. Lowrey
Leilani Bowen
Mrs. B. W. Hemmings
A. S. Hartwell, III
F. C. Rawson

2nd

R. F. Hennessey
R. E. Howe
Fred Rohlfing
Elspeth Cantlay

3rd

J. C. H. Brown
O. F. Safarik, Jr.
Richard J. McGill

4th

Johnny J. Gomez
Edward T. Harrison
Stanley V. McKenney
Roxanne Reed

5th

Jack F. Whipple
Lani Willers
Miss Harriet R. Roy
Owen O. Hubbell

6th

Jack M. Mattice
Ballard Atherton
R. C. Oppenlander
James E. Smith, Jr.
Morlan Visel
James J. Brewer

7th

Eva Hunter
Carlos Rivas
Andrea M. Peters

8th

Mrs. Arthur Marks
Brewster B. Broadwell
Melvin Ferrara
Garin P. Thurston
Mrs. Mable W. Babcock

9th

William W. Prange
Richard A. Muirhead
John R. Nork, Jr.
Chas. J. Pietsch, III
E. James Tilton

10th

Mrs. F. F. Whittemore
Molly Johnson
Geo. F. Thornally
Mrs. James Kimmel
Michael Buck
Michael E. Holmes

11th

Webley Edwards
William P. Lacy
F. P. Lowrey
Dorothy A. Fuller
J. Win Austin

12th

Reginald Millington
Mrs. Robt. F. Wilson
James W. Duff
Mary H. Jenks
Michael Wond

14th

Thos. G. Singlehurst
Archie S. Kaaua, Jr.
Beth Rust

15th

W. L. Doering
Carl H. Holst
M. J. O'Hara
Frank E. Midkiff
Ernest W. Stenberg
John C. Dallas
Elroy Fulmer, Jr.
Arthur R. Olson
Edward L. Ralston, Jr.
Lt. Cmdr. R. R. Farrell

16th

Martin Anderson
Mrs. E. E. Bodge
Robert B. Graham
Mrs. Robt. L. Mullen
Mr. Walter H. Samson
J. Jerry Kestly
Francis W. Stone

17th

Ralph B. Johnson
Annalie Tatibouet
W. B. Bahrenburg
Judith P. Parker
Jenna Vee Moore
Newbold Morris
Burton W. Hanstein

18th

Dr. Robt. H. Morrison
Jan F. Mowat
S. W. Royce
Geo. Gordon Kay
Mrs. John Andersen
Kathryn E. H. Beam

19th

S. J. Gilliland
Lawrence A. Kerr
J. Edward Lyons
Mrs. Chas. Printz
Miss Janet R. Todd
R. M. Torkildson
Mrs. Jos. C. Bennett
Rona Ann Danford
Donald B. Sheik
Benj. H. Clarke, Jr.
Nancy J. Kellerman
Stephen Gratwick
Ralph D. Bartlett
Ens. Jas. D. Robinson
Lt. Wm. B. Mosle, Jr.

20th

William A. Cottrell
Thad W. Ekstrand
William Summers
Edward J. Fearon
Lt. John P. Spierling

21st

Jarrett F. Carr
Geo.-Rowe J. Burmeister
Hagood B. Hemmings
Robert C. Johnson
Richard C. Dinmore
Douglas Philpotts
Herbert H. Baker
Mrs. Kathryn M. Gage
Mrs. Pierre Letourneur
Ethel P. Makinney
Mildred Morris

22nd

Ray E. Adelmeyer
Doris Duke
Kenneth Pratt
Keoni M. Warinner

23rd

Jas. H. MacKenzie
Mrs. Muriel Rowe
Doris M. Kirby
H. Bryan Renwick
Forrester Paterson
Walter H. Dillingham

24th

M. B. Henshaw
Nat Norfleet
Hart Wood, Jr.
Eugene H. Hoffman
Charles Coelho

25th

Thomas Ludlam, III
Dean B. Spencer
Kenneth L. Stone
Douglas M. Ackerman
Jack C. Tobin
Lloyd P. Carlos
Robert Dean Kauaihiolo
Patricia Lou Lyons
Ian G. Watt

26th

Mrs. Helen Sack
Mrs. Geo. F. Furbush, Jr.
Charles B. Schrader
William P. Tunell
Don Gould

27th

Clyde B. Aitchison
Glen A. McTaggart
Sanborn Griffin

28th

Dr. Nathan Sinai
Mrs. Brevord D. Sinclair, III
Sheridan G. Stanton
Nat Norfleet, Jr.
Donald C. Bernshouse

29th

Poomaikelani Kawanakoa
Peter A. Balding
Richard M. Botts
Dorothy E. Rose
Paul W. Turley

30th

Rolla O. Brown, Jr.
J. P. Leebrick
Fred L. Mandel, Jr.
Neill Pat Ryan
Edward G. deHarne

STUDENTS . . .

Outrigger members attending college should inform the office of their address to assure winter delivery of the *Forecast*.



Malie sez mabalo nui loa no ka haoli la hanau as Outrigger employees gather around to wish her a happy birthday at surprise birthday luncheon given her by staffers and club members.

**FOR A
BETTER
MIXED
DRINK..**



**Livelier
sparkle...
more taste!**

**ASK TO HAVE IT
MIXED WITH**



**CLUB SODA
OR
GINGER ALE**

AFFILIATED CLUBS

Aero Club of Oregon, Portland, Oregon
 Arizona Club, Phoenix, Arizona
 The Austin Club, Austin, Texas
 Balboa Bay Club, Newport Harbor, California
 Cleveland Athletic Club, Cleveland, Ohio
 Club Del Mar, Santa Monica, California
 College Club of Seattle, Seattle, Washington
 Coral Casino Beach and Cabana Club,
 Santa Monica, California
 Cork Club, Houston, Texas
 Country Club of Peoria, Peoria, Illinois
 Davenport Club, Davenport, Iowa
 Deauville Club, Santa Monica, California
 El Paso Club, Colorado Springs, Colorado
 Jonathan Club, Los Angeles, California
 Kona Kai Club, San Diego, California
 La Jolla Beach & Tennis Club, La Jolla,
 California
 Lake Shore Club of Chicago, Illinois
 Los Angeles Athletic Club, Los Angeles,
 California
 Milwaukee Athletic Club of Milwaukee,
 Wisconsin
 Multnomah Athletic Club, Portland, Oregon
 New York Athletic Club, New York, New York
 Old Pueblo Club, Tucson, Arizona
 Olympic Club, San Francisco, California
 Pasadena Athletic Club, Pasadena, California
 Pacific Coast Club, Long Beach, California
 The Petroleum Club of Bakersfield, California
 Press and Union League Club of San Francisco
 Riviera Country Club, Pacific Palisades,
 California
 San Diego Club, San Diego, California
 Shadow Mountain Club, Palm Desert,
 California
 Tulsa Club, Tulsa, Oklahoma
 University Union Club of Tacoma, Washington
 Washington Athletic Club, Seattle, Washington
 Hilo Yacht Club, Hilo, Hawaii, T. H.
 Kauai Yacht Club, Lihue, Kauai, T. H.
 Maui Country Club, Maui, T. H.
 American Club of Guatemala, C. A.
 American Club, Mexico City, Alberto, EAMO
 American Club, Mexico City, Mexico
 Calgary Petroleum Club, Calgary, Alberta
 Canada
 Carleton Club, Winnipeg, Manitoba, Canada
 Casino De Parral, Chihuahua, Mexico
 Chihuahua Foreign Club, Chihuahua, Mexico
 Club Campestre Cuscatlan, San Salvador
 Edmonton Club, Edmonton, Canada
 Monterrey Foreign Club, Monterrey, Nuevo
 Leon, Mexico
 Pacific Club, Victoria, B. C., Canada
 South Yarra Club, Melbourne, Australia
 Tattersall's Club, Brisbane, Australia
 Tattersall's Club, Sydney, Australia
 Terminal City Club, Vancouver, B. C., Canada
 Twenty-one Room Club, London, England
 University Club of Vancouver, Canada
 Vancouver Club, Vancouver, Canada
 Vernon Club, Vernon, B. C., Canada
 Waikiki Club, Lima, Peru

for a



high return

in good taste,

always ask for flavorful



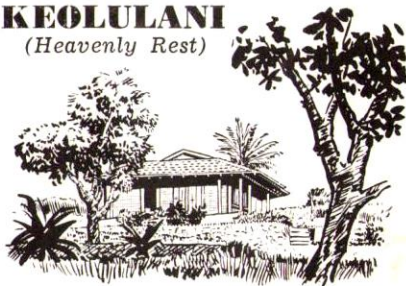
Olympia Beer



VON HAMM-YOUNG CO., Territorial Distributors

KEOLULANI

(Heavenly Rest)



HANA, MAUI . . . FOR RENT

Modern Cottage Ocean View

\$75 WEEKLY

**Fully Furnished, Including
Utilities and Linen.**



For information call
 Mrs. Winifred Provine
 Ph. 65-402

(8 to 4 Mon.-Fri.)

Or write P. O. Box 2903
 Honolulu 2, T. H.

THE SHOWPLACE OF THE ISLANDS



Queens Surf

ON THE BEACH AT WAIKIKI

SURFWAGON DINNERS — \$2.95 served in the Polynesian Garden—Cocktails, Dancing and Entertainment under the stars. BAREFOOT BAR on the second floor with informal Hawaiian entertainment. Open nightly (except Mondays.) LUAUS every Sunday.

The Gourmet



Good food superbly prepared — an attractive, friendly atmosphere.

COMPLETE DINNERS served 6:00 to 10:00 p.m.

LUNCHEONS daily.

COCKTAILS from noon.

Paul Conrad at the PIANO BAR nightly.

Royal Block—Kalakaua Ave.

FISHERMAN'S WHARF

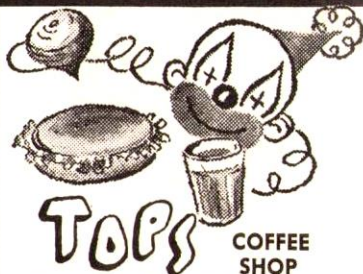
Honolulu's Famous Seafood Restaurant located on the wharf at Kewalo Basin.

LUNCHEONS

DINNER

COCKTAILS AT SNUG HARBOR

MICHELOB BEER ON TAP



Always open. Good food and fast service. Delicious, juicy carved-to-order sandwiches served in the Clown Room Cocktail Lounge from 11:30 a.m. to 2:00 p.m. (except Sundays). Cocktail lounge open from 10:30 a.m. until 1:00 a.m. (2:00 a.m. Fridays and Saturdays). Across from Kaiser Dome.

TAHITIAN LANAI

on the Beach at the Waikikian Hotel

Enjoy the Gay Abandon of Tahitian Atmosphere

Daily 7:30 a.m. to 10 p.m.

A la Carte Breakfast and Luncheon Complete Dinners from \$3.75

Cocktails in the PAPEETE BARI 11:00 a.m. to closing

Piano Bar Music from 9:00 p.m.

Service around the pool or on the Lanai



Kopper Kitchen

The Newest COFFEE SHOP IN WAIKIKI

Open 7:30 a.m.-1:00 a.m.

Royal Block Kalakaua Ave.

