

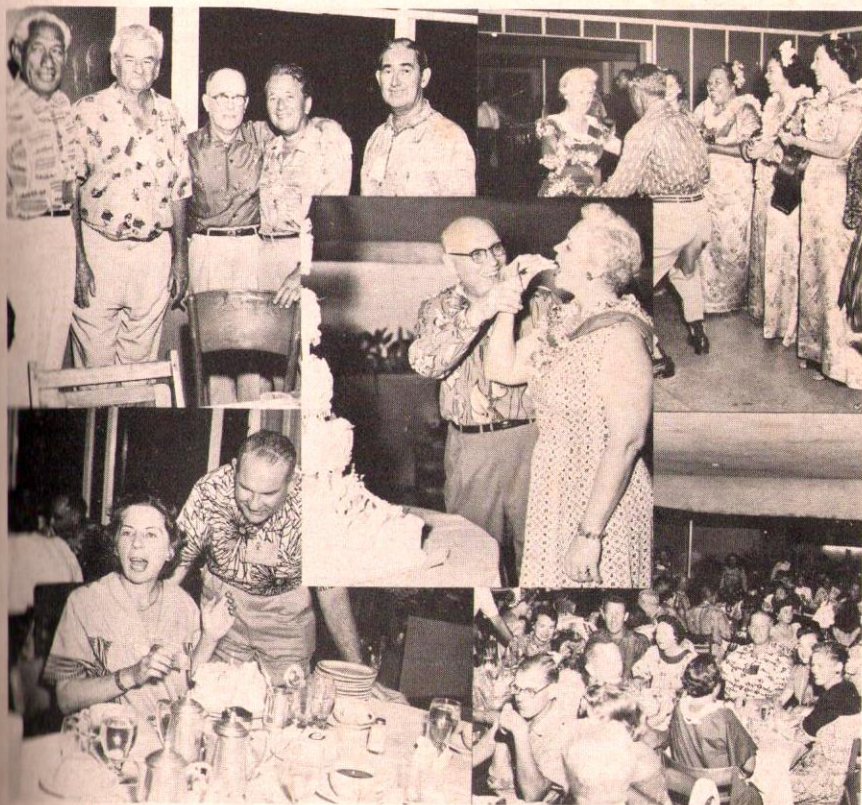


OUTRIGGER CANOE CLUB

JUNE

FORECAST

1958

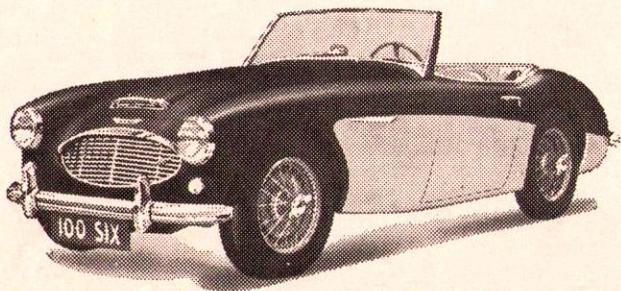


CENTENNIAL YEAR—The 50th anniversary party May 2 was a gay occasion as shown in the candid shots above. In the center, President Smith helps Marie Weslau Jackson of aquatic fame to a piece of birthday cake. It's also a birthday for Mrs. Wilfred Godbold, lower left. David Kahana-moku and Lilie MacKenzie cut a mean hula, upper right. Duke, Dad C'en-ter, Jack MacKenzie, Walter Preigg, and Gay Harris recall the good, old beginnings of the club, upper left, and at the bottom right a good time was had by all.—Scoops photo.

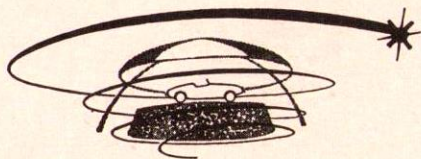
AT YOUR
SPORTS CAR CENTER

Now Available _____

THE NEW
Austin-Healey 100-Six



Take a turn at the wheel of the new Austin-Healey 100-Six either in competition or just for a family holiday spin. You'll be thrilled at its performance . . . and you'll appreciate the extra occasional seats!



Look for the Revolving Showroom

WEAVER MOTORS

704 Ala Moana

Phone 59-965



FORECAST

Issued by the
BOARD OF DIRECTORS

FORECAST — Ed Greaney, Chairman; Norman Godbold, III, Harvey Wilson, Pat Wyman, Taylor Mercer.

OUTRIGGER CANOE CLUB

Founded 1908

WAIKIKI BEACH

HONOLULU, HAWAII

OFFICERS

RONALD Q. SMITH President
MARTIN ANDERSON Vice-President
J. WARD RUSSELL Secretary
DR. STANLEY J. BEARDMORE Treasurer

DIRECTORS

Martin Anderson	James Plueger
Dr. Stanley J. Beardmore	Ward Russell
Dr. Irving Blom	Ronald Q. Smith
A. A. Carswell	Fred Steere
H. Vincent Danford	James P. Stopford
Wilfred D. Godbold	Herbert M. Taylor
Duke P. Kahanamoku	Herbert Van Orden
CHARLES HEE, Admin. Ass't	

COMMITTEES FOR 1958

ADMISSIONS—Don Waggoner, Chairman; Dr. Irving Blom, Sponsoring Director; C. E. Ackerman, Jr.

BEACH SERVICES—Fred Steere, Sponsoring Director

BUILDING FUND—Leslie A. Hicks, Chairman; Herbert Taylor, H. V. Danford, Victor Kahn, U. J. Rainalter

BUILDINGS AND GROUNDS—Ernest H. Thomas; Chairman; John Park, Vice-Chairman; A. A. Carswell, Coordinating Director; Robert Patrick, Cline Mann, Art Lange

BASEBALL TEAM—William M. Barnhart, Chairman

BY-LAWS—Fred Rohlfing, Chairman. Martin Anderson, Coordinating Director.

CASTLE SWIM—To be appointed

CLUB CAPTAIN—Ron G. Sorrell

DISCIPLINARY—Ward Hiberly, Chairman; Martin Anderson, Coordinating Director

ENTERTAINMENT—Harold Whitaker, Chairman; Ward Russell, Coordinating Director; Charles Schrader, James Hakuole

FINANCE—Ronald Q. Smith, Chairman; Judge Wilford D. Godbold, Dr. Stanley J. Beardmore, Martin Anderson, H. V. Danford

HEAD COACH—George Downing

HAWAIIAN CANOE RACING ASSOCIATION—Robert Fischer, Fred Hemmings, Bob Anderson

NEW CLUB BUILDING—James Stopford, Chairman; Louis L. Gowans, Fred P. Lowrey, Herbert Van Orden, Keith Wallace, Howard J. Bourell

VOLLEYBALL—Mark Auerbach, Chairman

NEW CLUB MANAGER APPOINTED

The House Committee takes pleasure in announcing the Club has secured the services of E. S. Jake Tudor, formerly of the Commissioned Officers Club, Barber's Point, to be our new Club manager, succeeding E. P. Ted Magill.

This announcement is being made with the sincere hope that you approve of the appointment and your approval will be shown by increased attendance at all of our activities.

To Ted Magill, Aloha and Mahalo for your past efforts and success in whatever plans you may have for the future.



SUIT

The club is being sued for \$25,000 by a 22-year-old teacher who was injured last September when she was riding in a club outrigger canoe a mile off Waikiki.

Joan Gallagher of 2957 Kalakaua Ave., claims in a suit filed last month that she suffered broken face bones when the canoe collided with a surfboard. The canoe swamped when its outrigger was shorn off. Ten persons were in the canoe at the time.

Miss Gallagher, through her attorney Kenneth E. Young, claims the club was negligent in allowing the canoe to be operated by a person not licensed by the Coast Guard.

Young maintains this was necessary since the canoe used an outboard motor, placing it under the jurisdiction of the Federal Motor Boat Act. All boats over 15 feet in length, power driven, and carrying passengers for hire, must

be operated by licensed personnel, according to the act. In addition, they must carry life preservers for every passenger, and some kind of whistle or warning device.

ROBIN LUKE

An OCC junior member who began guitar playing several years ago as a hobby has recorded his first record that has already become popular throughout the islands since its release several weeks ago.

Robin Luke—16 year old Punahou school junior — signed the contract with the International Recording studio for "Suzie Darling" and "Living's Loving You"—both of which he composed himself.

The young rock-and-roller of the non hip swinging variety, has been featured on island radio and television shows and was recently headlined in the sixth Show of Stars at the Civic Auditorium.

STATEMENT OF INCOME AND EXPENSES

FISCAL YEAR BEGINNING NOVEMBER, 1957

INCOME

	<i>March</i>	<i>April</i>	<i>To Date</i>
Dues	\$6,587.65	\$6,601.35	\$41,456.85
Food	11,504.46	11,791.01	65,072.78
Beverage	8,513.15	7,890.39	48,035.84
Fountain	1,984.70	2,386.61	11,703.51
Others	3,832.07	4,669.67	21,344.85
Total Income	\$32,422.03	\$33,339.03	\$187,613.83
Cost of Income	9,892.84	9,830.55	53,679.57
Gross Profit	\$22,529.19	\$23,508.48	\$133,934.26

OPERATING EXPENSE

Salaries and Wages	\$13,051.06	\$13,379.21	\$78,550.71
Employees' Meals	1,183.50	1,185.00	7,116.00
Supplies	900.00	900.00	5,400.00
Music Entertainment	264.53	264.53	2,237.18
Rent	666.66	666.66	3,999.96
Taxes	1,727.34	2,086.42	12,295.36
Insurance	429.53	429.76	2,569.07
Repair, Maintenance	599.89	369.01	2,949.91
Others	4,111.49	4,021.56	24,139.00
Total Operating Expenses	\$22,934.00	\$23,302.15	\$139,257.83
Operating Profit	(—\$404.81)	\$ 206.33	(—\$5,323.80)
Depreciation	2,427.91	2,427.91	14,567.40
Net Profit or (Loss)	(—\$2,832.72)	(—\$2,221.58)	(—\$19,891.03)

FORECAST

For the past 17 years Ernie Stenberg has been putting out the *Forecast* singlehandedly, spending more than 30 hours a month on a labor-of-love. Recently he retired from his job and this month he leaves on an extended trip.

The job of publishing the *Forecast* has been turned over to a committee. A committee can't do the job of one dedicated man; we will be hard-pressed to maintain Ernie's standards.

But it is our aim to put out a good publication which reports club affairs and membership views.

The *Forecast* has been an expensive proposition for the club, costing \$4,200 last year. We hope with this new "format"—production by offset printing—and with increased advertising to affect substantial savings.

But we want to hear what you would like to read in the *Forecast*. We need your ideas and kokua.

Beginning with the August issue, we hope to have a new feature: letters from club members on club affairs, be they "gripes," suggestions, reminiscences, or whatever. We understand "Surf and Sand" was a popular feature among the ladies and intend to continue it if we get items from the membership.

We also suggest that members consider the advantages of advertising in the *Forecast*. Our rates published elsewhere in this issue are inexpensive for the size—and purchasing power—of our readership. Also the *Forecast* is an advertising medium with some permanence, kept and valued throughout the month.

Members of the *Forecast* committee are Pat Wyman, *Forecast* reporter, Norm Godbold, rewriter and copy editor, Harvey Wilson, advertising and T aylor Mercer, printing and layout, and E. J. Greaney, chairman. We welcome your contributions and suggestions—in fact we can't work without them.

The *Forecast* is your publication and can be as interesting to you as you want to make it—if you support us with your criticisms and contributions.

The Forecast Committee

VOLLEYBALL HIGHLIGHTS

Mark Auerbach, chairman

Volleyball is once again on the upswing at the Outrigger Canoe Club.

The Club's recent victory in the six-man Armed Forces League and the formation of a brand new volleyball committee has stimulated interest in all age groups to a near all-time high.

The new committee—headed by chairman Mark Auerbach—has come up with a tournament schedule for the remainder of 1958 that is geared to attract both male and female volleyball aspirants from ages 9 to 90.

Other committee members are former All-American Tommy Haine, representing senior men; Gail Lange, senior women, and Marilyn Haine, junior women.

For the first time, two junior men—Gil Halpern and Bill Danford—have been named to the volleyball committee.

Fred Hemmings, Sr., is representing the Outrigger in City-wide tournaments.

The committee recently sponsored a 15 and under age group tournament that attracted many weekend fans.

Two new eliminations—the "throw" and "masters" tournaments for men under 35—have been added to the club's rapidly growing list of approaching tournaments.

Upcoming volleyball events:

June—Junior Doubles Tournament (18 and under)—played under AAU rules jurisdiction.

August—Senior Doubles (Open)—AAU.

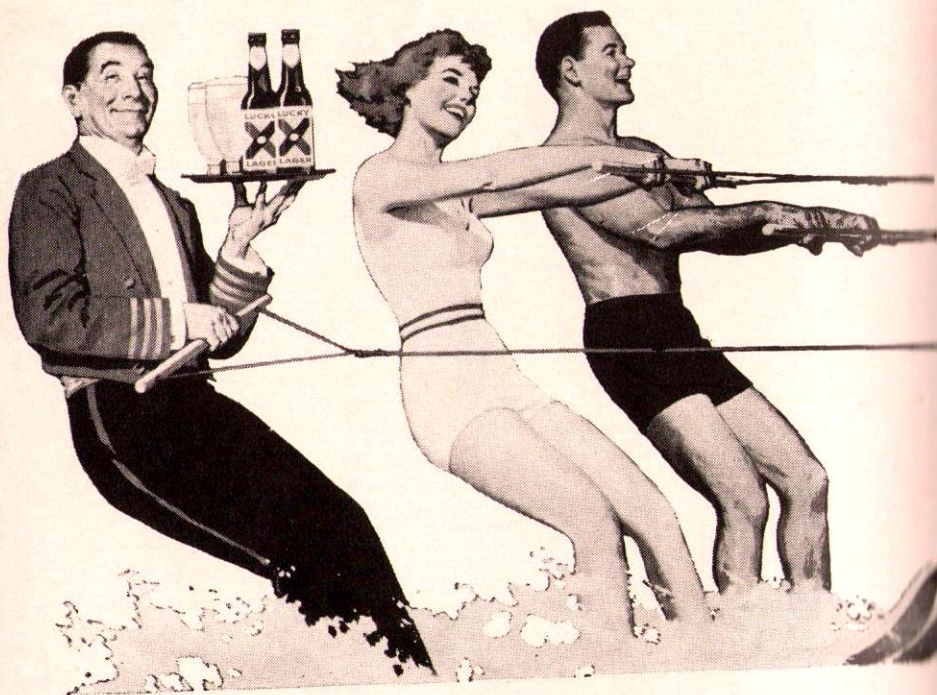
Sept.—Wahine Doubles (Open)—AAU.

Oct.—Masters Doubles (Men over 35)—modified AAU rules.

right!

LUCKY LAGER is always right!

It looks right...and it tastes right
...because it's always aged just
right. That's why Lucky Lager is
Hawaii's favorite beer.



DIRECTORS

Minutes of the Meeting—A digest of the actions of our board of directors.

Club directors at their May meeting on the 15th voted to give the Aventura group a 30-day extension on their escrow agreement.

Judge Wilford Godbold told the directors he felt sure the Aventura deal is going through. Under it, the club is being paid \$200,000 for its remaining four years sublease from Matson Navigation Co., which in turn leases the club property from Queen's Hospital.

The Murchison-Trousdale Waikiki Development Co. plans to take over the lease from Matson on Nov. 1, 1963.

The Aventura group have unveiled plans for a \$3 million, nine-story apartment tower with shops and a beach club for the club's present site. Its corporation, capitalized at \$306,000 with authorized expansion to \$1 million, is International Building, Ltd. Construction is not expected to start until 1960.

At the May 15th meeting the directors also voted to continue the Walter Macfarlane Memorial Canoe Races.

It had been planned to change the memorial to surfboard races, but a group of old-timers including director Duke Kahanamoku persuaded the directors to keep it as a canoe event.

Appearing before the directors for this discussion were: Johnny Hollinger, Dad Center, Gay Harris, John D. Kupiko, Toots Minville, Bob Fischer, and Jack Mackenzie.

George Downing's summer program for junior members was approved subject to an investigation of the insurance and liability risk aspect involved.

Head Coach Downey told the directors he and other members of the Outrigger Beach Services plan to form a corporation to seek a contract with Matson Navigation Co. for hotel beach services, if and when the Outrigger moves to the Elks Club site and gives

up its franchise. Directors said that when the Elks Club move is made the club plans to give up the Matson beach services contract.

At a special May 6th meeting Fred Rohlfing was named chairman of the committee to revise the present by-laws. Arthur Schofield was named chairman of the disciplinary committee.

Gil Halpern, president of the Junior Board of Directors, was named to serve on the admissions committee when junior members are being interviewed.

ALOHA, TED

E. P. "Ted" Magill — three time Outrigger manager for a total of more than seven years—has resigned from the club post for reasons of health.

Ted is scheduled to leave the Islands on June 10 for an extended vacation on the West Coast.

Ted's appointment as club manager in 1948 followed a long string of successful terms with private clubs and hotels in vacation resort areas throughout the East and in Florida.

The lure of Mexico City attracted Magill in 1951 but he returned shortly afterwards to Hawaii and the Outrigger Club.

Globe-trotting Ted departed the islands for the Caribbean in 1954, this time for two years, returning in the early summer of 1956.

At the time of their leaving, a Honolulu newspaper published an editorial on Ted that had this to say:

"Mr. Magill leaves it (Outrigger) with a record of financial success and productive activity . . . terms of management that have been marked by outstanding success."

And we add "not to mention the many, many sincere friends that join in wishing Ted our fondest aloha."

OUR ADVERTISERS HELP US
PLEASE SUPPORT THEM



Club employees ask us to pass on their thanks to Oliver Kinney for his aku which provided their picnic May 12th with shashimi. "It was delicious," they report.

The club was host to some distinguished British visitors last month: Gen. Sir Francis Festing and Mrs. Festing and Maj. Gen. Pyke of the British Army, guests of Adm. Felix Stump, and Col. John Woodroffe, office of the British Commander-in-Chief at Singapore, guest of Charlie Holt.

Husband George now publishes newspapers at Azusa and Glendora. He's president of the Glendora Chamber of Commerce, Real Estate Board, and Rotary Club—all at once.

Their son Drake and daughter Caudace say "Hi," to their Outrigger friends.

Mimi Hawkins, now living in Alhambra, Calif., co-authored a PTA musical, "Soles at Sea," recently which met with critical acclaim and box office success at the Loma Alta school auditorium.

George McLane had a figure in the news as a guest of the club, last month, Congressman Charles O. Porter of Eugene, Ore., critic of the Atomic Energy Commission who broke the news of the recent hydrogen bomb tests down south.

Mrs. W. F. Parker is new chairman of the Women's Assn. of the Honolulu Symphony Society. A picture of the attractive, young matron recently graced the local society pages.

Al Sears Jr. is back at the beach after four years in Davenport, Iowa, where he attended the Palmer School. It's "Dr." Sears now; he plans to practice as a chiropractor here. Congratulations, Al.

Man! This skin diving's lotsa fun,
But you're sure hot out in that sun.
Just what you need for refreshing cheer
Is a frosty cold drink of Primo Beer!



Primo

THE
HAWAIIAN
BEER

HAWAII BREWING
CORP., LTD.
HONOLULU, HAWAII



MOUNTAIN BALL TEAM IN ROUND ROBIN

The Outrigger Canoe Club's mountain ball team winds up its 1958 regular season play in the City Businessmen's League tied for second place with a 4 and 2 record to qualify for the round robin championship series.

The four top teams compete for the title in a series that begins at the Elks Club field on June 6.

The Outrigger nine, led by player-coach "Whiskey" Barnhart, jumped to an early league lead with successive wins over the Park and Yee Company, 15-10, and the Austin and Towill team by a 10 to 1 count.

The OCC suffered a mid-season slump, dropping two in a row to the Bishop Estate and the R. M. Towill Company by close margins, then picked up to overpower their final two adversaries—Belt, Collins, and Associates, 4-2 and Law and Wilson 11-2.

ENTERTAINMENT CALENDAR

- 7 Sat—Outrigger Serenaders
- 14 Sat—During Dinner Hour
- 21 Sat— 7-9 P.M.
- 28 Sat—
- 26 Thu—Game night

Dinner 6:30

Games 8:30

Call Maxie 93-676
For Reservations



HAWAIIAN TRUST

Investments • Real Estate
Estate Planning
Property Management

Phone 5-1941

1010 Richards St., Hon., T. H.

BUSINESS DIRECTORY OF O.C.C. MEMBERS

A Ready Reference for You

AUTOMOBILES

"CHUCK" WEAVER

Austin • Austin-Healey
MG • MORRIS

704 Ala Moana—Phone 59-965

INSURANCE

W. C. "BILL" MORRIS

All Kinds of Insurance

Prudential—Honolulu 51-946

RESTAURANTS

SPENCE & CLIFF WEAVER

Spencecliff Restaurants, see back page

"GRANNIE" ABBOTT

"TRADER VIC'S"

926 Ward St.

LINEN SUPPLY

JACK MAGOON

Hawaiian Linen Supply
837 Kawaiahao St.

REAL ESTATE

SHIRLEY (MRS. PAT) OLDS—

LEA THROPP, LTD.

Office 935-255—Home 733-103

DAIRY PRODUCTS

**DAIRYMEN'S PROTECTED MILK
AND MEADOW GOLD
ICE CREAM—996-161**

DEEP SEA FISHING (Kailua Kona)

"KAKINA"

(JOHN HONL, CAPTAIN)

Radio Telephone—Twin Engine
Coast Guard Inspected

Telephone Kona 242-315 or Kona 256-325

Here in Hawaii Nei folks like to know with whom they are doing business. Other things being equal, they would prefer to do business with their friends—including fellow Club members of the O.C.C.

So you know just who offers the products or services you need, the "FORECAST" publishes this directory.

PADDLING PATTERN

The Outrigger Canoe Club opened its 1958 paddling season with a tie for third place in Maritime Day Races held May 25 at Honolulu Harbor.

Paced by the 15-and-under crew of Bill Danford, L. Rietow, Nat Norfleet, S. Brissette, P. MacLaughlin, and Mike Lemes the OCC's Boys 17 and under, Boys 13-and-under, Freshman six and Women's Junior Six compiled a total of 17 points to tie with Healani.

In a field of eight participants the Waikiki Surf Club easily dominated that regatta, amassing 37 points. Second place Kai Oni fell far below with 24 points.

As in the past, Coach George Downing's charges have begun a new season slowly and conservatively, entering only seven of ten events.

The success of the Outrigger Paddling crews had depended and will depend on its complement from local schools and mainland colleges.

During the latter part of May and early June the youngsters wind up their school year with final exams. Most of them are not available for the racing season until mid-June—in fact Friday, the Outriggers lucky 13th of June.

As a result, the OCC will not enter crews in the Senior Men's, Senior Women's and Junior Men's events until later in the season.

Several rule changes have been made.

All Four-Man canoe races have been eliminated from the regattas shortening the total number of events from 12 to 10.

Two changes have been made in the Novice events. First the crew members in a winning boat in any Novice event are ineligible to compete in the Novice division the following year.

Second, rule changes now permit youngsters 13 years old and younger to fluctuate freely from their age group into the Novice races. The new

rule was devised specifically to aid in the development of younger paddlers.

Several new names have appeared in the 13 and under group, including Gary Celli, Koki King, and Tom Fearon. Coach Downing is looking for a winner in the "Mighty Mites" as the season matures.

The 15-and-under team which looked exceptionally strong in winning their event at the Maritime Day Races, has brought out newcomers S. Brissette, B. Eckert, W. King, and J. Gilmar.

One event that may steal the spotlight from the blue ribbon Senior Six event are the 17 and under crews, which at this point appear to be most evenly matched throughout the islands. The Outrigger is banking on the return of Tim Guard, who has steered the crew for the past three years, for an edge over rival crews.

A raft of strapping new paddling talent has given Downing renewed hopes in the Novice division. Kimo Godbold, Radford Small, David Rietow, Jack Gilmar, Bob McLain, Paul GeBauer and former footballer Henry Hollinger are training towards a winning Novice Six.

The Junior Girls crew, perennially billed as "The Most Beautiful Crew In The World," is looking for a lot of pull in newcomers Diana Damon and Lani Willers who have been moved up from the Novice Squad, and Jill Gaspar and Shaky Ledford.

The 1957 Novice Girls Crew shaped up as the youngest in the Territory. Coach Downing has moved into their position six newcomers termed the "Casserole Set": Mae Balding, Marilyn Haine, Mary Peden, Jerry Golock, Lynn Heilbron and Kathleen Townsend.

The brand new edition of the Outrigger's paddling crews have shown a lot of promise in their first outing.

With returnees filling the empty boats this month, the OCC may well be counted on to develop into an

other pennant winner in 1958.

Maritime Day Regatta results:

Boys 13 and under, $\frac{1}{4}$ mile—1. Healani (John Leith, Rupert Hunt, James Wilson, Michael Sturrack, Victor Palakiko, Anthony Guerrero). 2. Outrigger. 3. Kai Oni. 4. Hui Nalu. Time: 2:58.3.

Men novice, $\frac{1}{2}$ mile—1. Waikiki Surf (Louis Ling, Wendall Aiu, David Malo, Eugene Tom, Christopher Smith, Maurice Ikeda). 2. Healani. 3. Hui Kalia. 4. Kai Oni. Time: 4:25.0.

Boys 17 and under, 1 mile—1. Waikiki Surf (Joseph Napoleon, Joseph Keahiolalo, James Koko, Philip Wong, Jeffery Chee, Robert Ah Choy). 2. Outrigger. 3. Kai Oni. 4. Hui Nalu. Time: 8:50.8.

Women novice, $\frac{1}{2}$ mile—1. Waikiki Surf (Panny Wright, Mary Ching, Anita Kaanapu, Maylene Kaanapu, Mary Ann Hipa, Norma Paiana). 2. Healani. Time: 5:44.2.

Boys 15 and under, $\frac{1}{2}$ miles—1. Outrigger (W. Danford, L. Rietow, N. Norfleet, S. Brissette, P. MacLaughlin, M.

Lemes). 2. Kai Oni. 3. Holomua. 4. Waikiki Surf. Time: 4:17.4

Freshman six, 1 mile—1. Waikiki Surf (Jessie Crawford, Stanley Nuuhiwa, Hunchy Matsumoto, Moki Wallace, Randy Chun, Maurice Ikeda). 2. Outrigger. 3. Kai Oni. 4. Healani. Time: 8:46.2

Men's senior six, 2 miles—1. Kai Oni (N. Prezel, W. Vickery, J. Gilman, L. Calhau, A. Manoa, P. Gay). 2. Waikiki Surf. 3. Healani. Time: 17:22.4.

Men's junior six, $1\frac{1}{2}$ miles—1. Kai Oni (E. Santimer, P. Nakachi, H. Gramberg, A. Yokooji, A. Serikawa, N. Marugame). 2. Waikiki Surf. 3. Holomua. 4. Hui Nalu. Time: 13:25.2.

Women's junior six, $\frac{1}{2}$ mile—1. Waikiki Surf (Margaret Hipa, Mollie Stibbard, Kapua Paoa, Anona Naone, Yvonne Teves, Keala Stibbard). 2. Outrigger. 3. Healani. 4. Kai Oni. Time: 5:27.2.

Women's senior six, $\frac{1}{2}$ mile—1. Waikiki Surf (Lena Motta, Ruby Kalama, Oma Reis Moniz, La Clark, Anne Lamont, Ethel Kukea). Time: 5:27.2.

OUTRIGGER CANOE CLUB TOMORROW

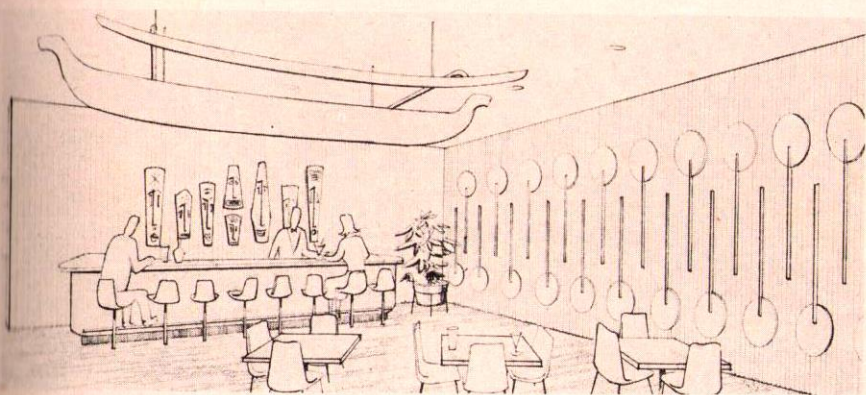
On these and the following pages, the *Forecast* presents a "portfolio of the future"—architect's sketches of what our new clubhouse may look like.

They are preliminary sketches only and were prepared by Val Ossipoff, architect, and his staff. Wimberly & Cook is associate architect.

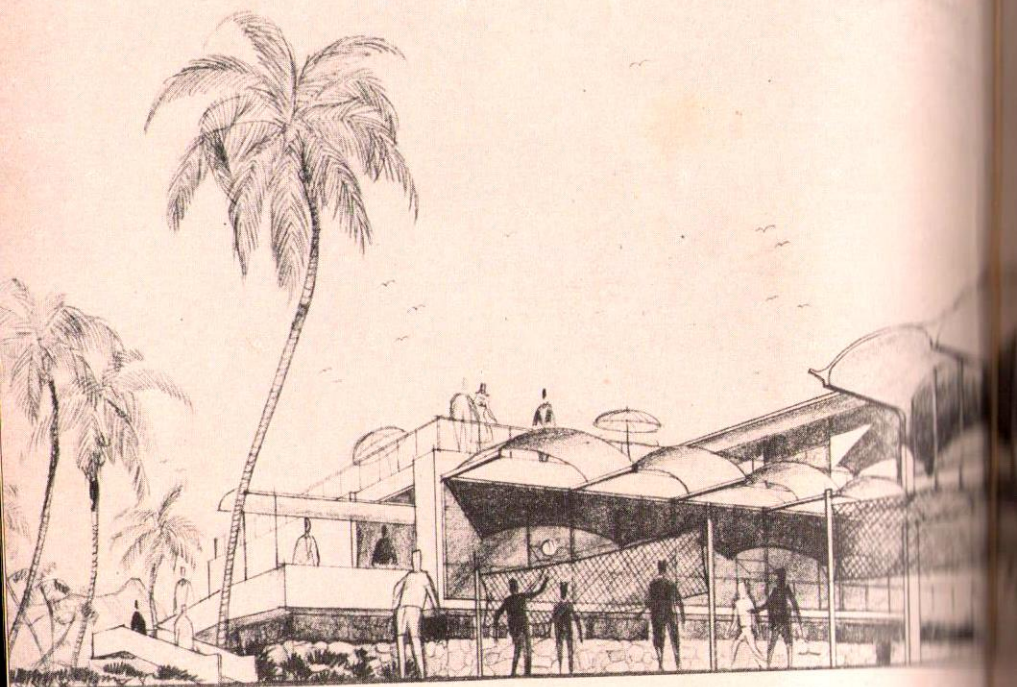
The plans are incorporating as far as possible the thinking of the club membership as reflected in a mailed

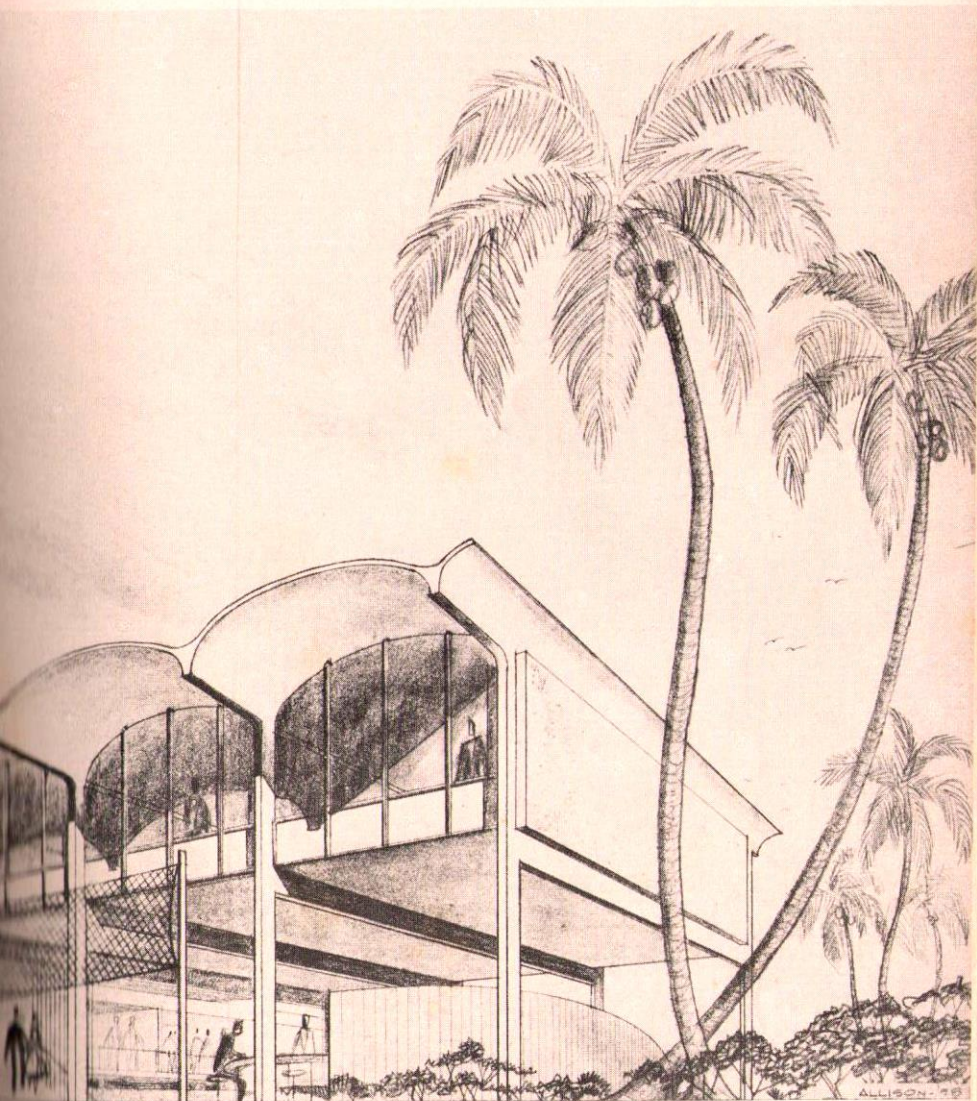
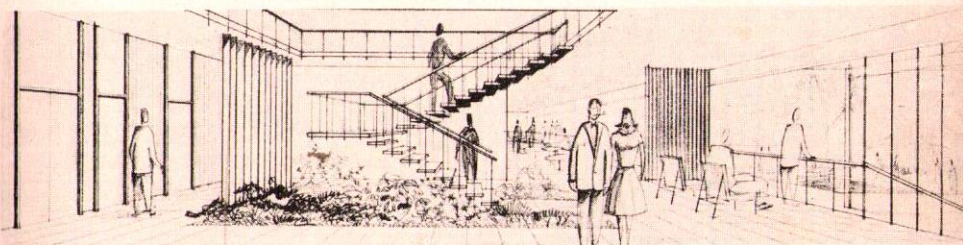
questionnaire. They are being made on an estimate of 1,500 regular members, as compared to today's 1,100. The total current membership including juniors and associates is about 2,200. Cost of the new clubhouse is not to exceed \$650,000.

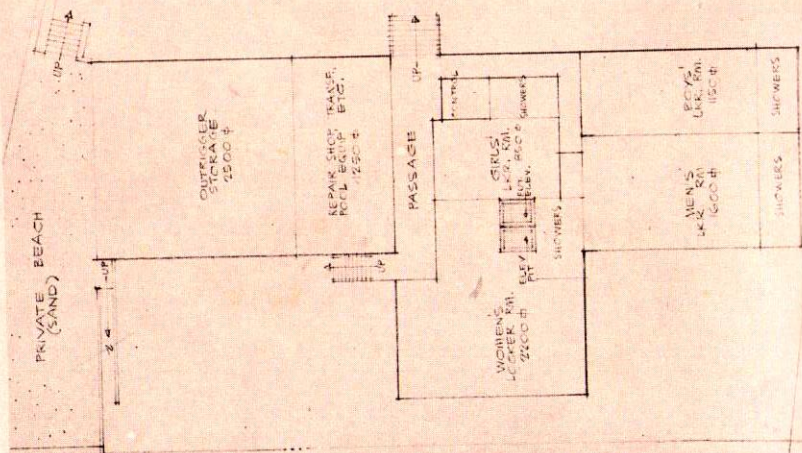
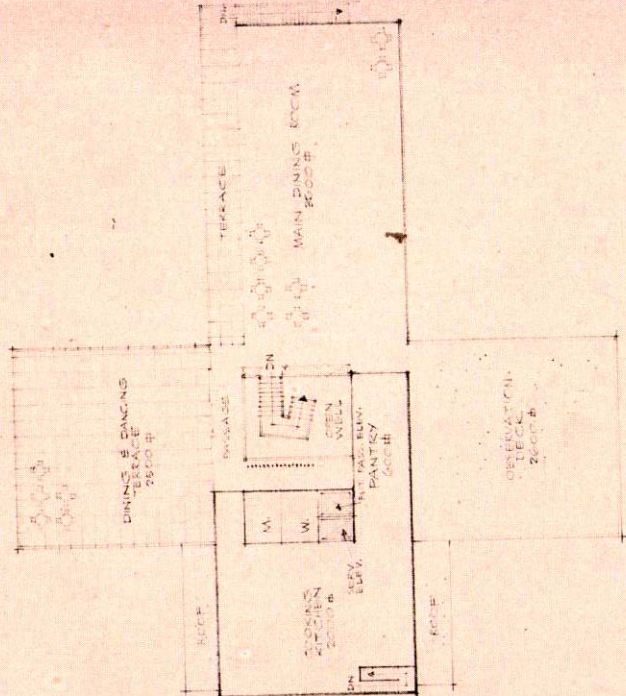
The *Forecast* publishes these sketches in order to encourage member suggestions, which should be directed to the building committee headed by Jim Stopford. There is nothing final about these plans.



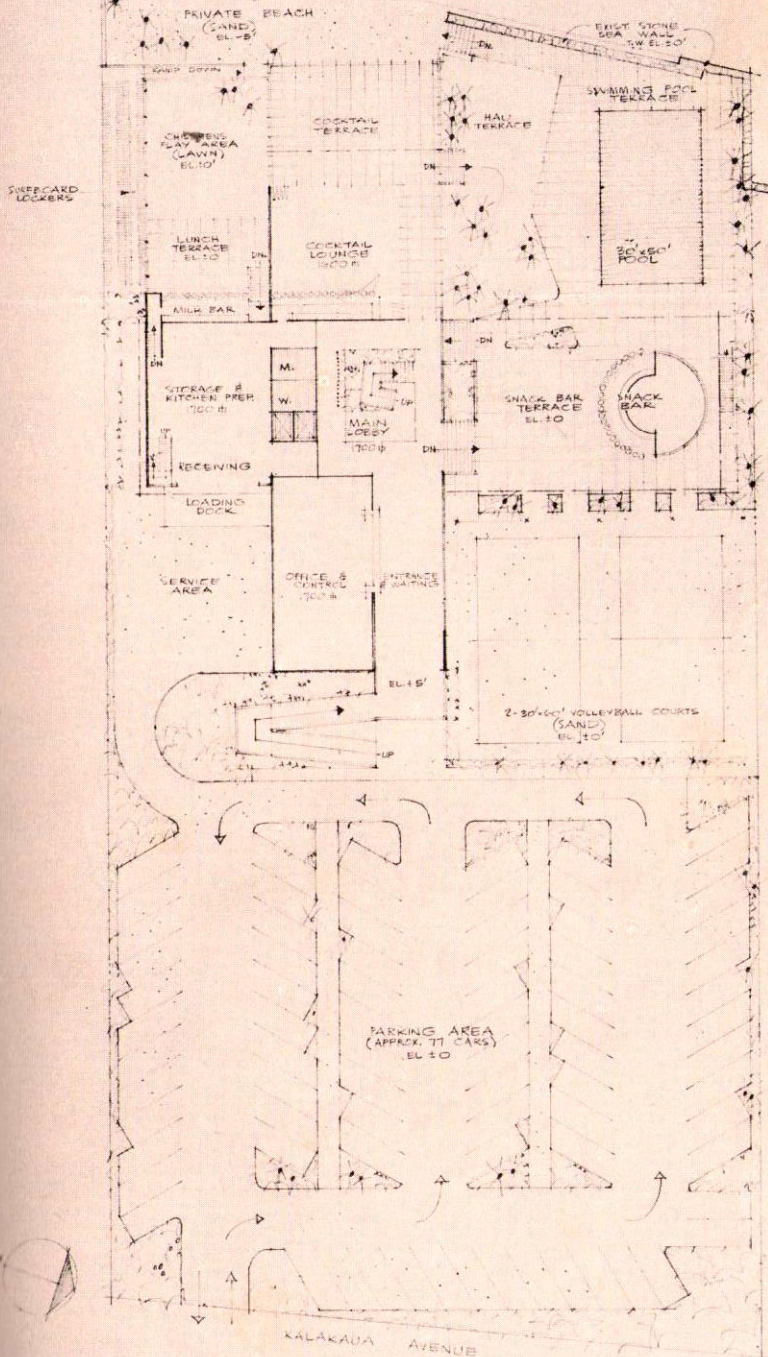
On the previous page is a sketch of the fountain; to the right is one of the lobby. Floor plans follow. Below is the front view facing the street. A parking area for 75 cars separates the club house from Kalakaua Avenue.







PROPOSED NEW BEACH AREA
(EXIST. MEAN LOWER LOW WATER LEVEL, EL. -0 APPROX.)



MAIN FLOOR PLAN - 2ND LEVEL - (ELEV. +5')

SCALE 1/8" = 10'

THE OUTRIGGER CANOE CLUB LOOKS AHEAD

Soon a nine-story "co-op" apartment house will rise on the site of the Outrigger Canoe Club on Waikiki beach.

Old-time members, who can remember when the club was a small grass shack moved from the old Kapiolani Park zoo, think of this with a pang of regret.

The O.C.C. has had its troubles in the past. It has always survived them. It nearly went on the rocks during the depression of the '30s. But a great membership drive and building fund campaign in 1941 restored its proud name.

Now, losing its homesite of half a century, it is meeting the challenge by building a new clubhouse on Elks Club property—away from the glitter and glamour of the big hotels, and from the popular surfing areas which impelled the late Alexander Hume (Pop) Ford and others to establish the club 50 years ago.

The golden anniversary issue of

Forecast, the club's handsome monthly publication, reviews the years of O.C.C. leadership in sports and social life on the beach.

An interesting note recalls that Burton Holmes, the travelog man, and Pop Ford arrived at Waikiki a day apart in 1908. Together they saw the opportunities for a beach club and within six weeks, they had rallied Honolulu's young leaders for an organization meeting on May 1, 1908.

Pop Ford became the first president and remained an inspiring leader in the club throughout his life. His boundless energy and organizing zeal produced many another organization in Hawaii during the years up to World War II.* But the O.C.C. was his first love and Waikiki beach his favorite habitat.

Today there are new leaders, headed by President Ronald Q. Smith, and the Outrigger Canoe Club looks to a new future, backed by half a century of tradition and solid achievement.

*Examples: The Pan-Pacific Union, the Trail and Mountain club.



Bottled under authority of The Coca-Cola Company by



"COKE" IS A REGISTERED
TRADE-MARK

4 or more big glasses in every bottle.
Better stock up on Coke today . . . the
best-loved sparkling drink in all the world.

REGULAR AND FAMILY SIZE!

SIGN OF GOOD TASTE

Bottled under authority of The Coca-Cola Company by
The COCA-COLA BOTTLING COMPANY OF HONOLULU, LTD.

MESSAGES FOR THE MASSES

by Fred Hemmings

If this gets into print, as far as the Outrigger is concerned, it will be an event very nearly as important as the invention of the wheel.

As the manipulations of the real estate operators continue to orbit around us there has been a growing concern amongst some of the thinking members that perhaps there should be some way of keeping the membership more informed of which way the club is headed.

Leading the field in the area of which way we're headed is an obvious concern over the physical surroundings to be constructed at the new club site. As of now it appears the actual move is a short year and a half away.

If we're bound to a move in a year and a half it's all the more reason for most careful planning and the next couple of months can be the most crucial in the life of the club.

The writer can still hear Potter Thurston in his voice of doom stating that the contemplated move in a year and a half was the death knell of the Outrigger. It's entirely possible that Mr. Thurston is correct. Let's examine some of the possibilities that confront us and realize that only through careful planning can we escape Potter's Prophecy.

First, the biggest selling point by the Board in regards the Elks property was that to remain in our present location the dues and other costs to members would soar whereas moving to the Elks area would tend to maintain a status quo or at worst a very mild increase to the individual member. Therefore if this premise is correct it behooves the club to come up with a most satisfactory arrangement as to club building, parking facilities, etc. and etc., for the very simple reason that to maintain whatever we've bought will require a reasonably stable number of members.

Anyone who won't admit we're going to lose some cash paying members at the time of the move is fooling himself.

Just how many or what percentage of members will drop out at the time of the move is probably impossible to tell at this time but it certainly follows that if the facilities aren't very nearly perfect there will be another exodus of a certain proportion of members who "waited to see" and were dissatisfied.

With the loss of too many members two things become necessary, either a successful membership drive or a general increase in dues and a large increase in dues drives out some more of the present membership. It begins to look like this is where we came in.

The only way to beat this type of thinking and the "Voice of Doom," is to cooperate to the fullest extent with the Directors in the planning stage. Cooperation may even be in the form of exerting some pressure to channel some of the planning along lines which will satisfy a certain segment of the membership.

The Directors are willing to admit they don't know all the answers and their job of trying to please every member is obviously so difficult it would stagger Solomon.

With the above in mind, Bob Fischer, president of the Kamaaina Hui, called a special meeting for the evening of May 14 with two thoughts in mind.

One, to honor Ted Magill, a staunch friend of the Hui who is leaving us come June 7th and the other to feel out the Hui in regards keeping a weather eye posted on the over-all planning for the contemplated move with the thought of encouraging or remonstrating with the Board, as the case may be. The writer is happy to report that socially the dinner was a success, however, in the area of communicating with the Board the Prexie's plan was quickly put to death.

It's unfortunate that an organized group such as this can't muster enough interest to either aid the Directors with encouragement or constructive criticism.

In this area one thought was prevalent amongst the group at the table and it could be summed up very simply: the communications between the Board and the general membership is exceptionally poor. Means of alleviating this situation were discussed and from this discussion this column was conceived.

It's hoped that this column will bring about some awareness of the situation confronting the club and thereby cause more members to communicate with appointed committees and the Board. Another avenue of communication will be tried and that is a report on the monthly board meeting in the *Forecast*.

The above two schemes are in lieu of an original suggestion to publish the minutes of the Board meetings. This suggestion provoked many thoughts, pro and con.

It was finally conceded that since the *Forecast* eventually finds its way into clubs and organizations scattered throughout the States and Pacific area, it was best to keep some things to ourselves. Things like disciplinary actions, delinquencies, etc.

Another reason against publishing the minutes was the cost when the ap-

proved minutes are available to every member merely for the asking. If you are interested you can call on the Secretary to the Board and she will permit you to examine any minutes which have been approved.

And now for a brief closing statement. This is a first effort and is strictly a trial basis, not particularly newsy but a ground work of things to come, if you so desire. Your suggestions and criticisms and witticisms are all in order and if fed some honest questions this writer will sincerely try to get some real answers. Without trying to add to any rumor factory the following are things some people may be interested in examining closer. It's been rumored that for a while plans were being considered to have a dining room at the new site large enough to seat 700. It was suggested that the work shop be done away with. Does this mean we're doing away with the canoes? For you volleyball enthusiasts the question was asked: where do you want the volleyball court, on the ground with sand or on the roof with a hard court and high fence. To the writer it isn't a question of where, it's the implication that there's only going to be one court at the new site. Pau for now, see you at the races.

(Editor's note: Fred, the dining room is designed for a seating capacity of 400, but can be expanded to 700.)

— TRY —

HAWAII'S FINEST DRY CLEANING

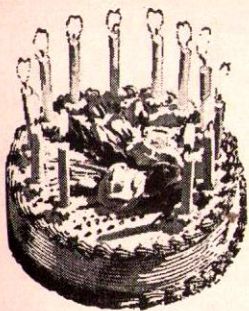
BY



AMERICAN
Sanitary **LAUNDRY**

DRY CLEANERS AND RENTAL OF LINENS

Since 1900



Hauoli
La Hanau
Aloha
Nui Loa

We extend hearty greetings and "Happy Birthday and best wishes to you" to all Club members whose birthdays occur in July.

JULY 1

Francis Evans
Earl M. Thacker
Mrs. C. V. Swann
Mrs. Robert W. Capps
Lawson Butt, Jr.

JULY 2

Allen R. Cunha, Jr.
Mrs. Jack Young
Roy Eaton
Mrs. Helen M. Lewis
Ransom I. Bovee
Mrs. Doris D. Maxey
Richard B. Millington
Ernest M. Bovee

JULY 3

J. A. Stackhouse, Jr.
Mrs. A. T. Sinclair
Carl B. Lyman
David M. Gray

JULY 4

W. J. Froome
Mrs. E. D. Luquiens
Allan George Sears
Mrs. R. P. Faithfull
Margie D. Kepner

JULY 5

Dr. L. G. Phillips
Donald F. Darrow
Alan Kay
Fred W. Mead, Jr.
Peter M. Guard

JULY 6

Eugene R. Adamson
Hallett E. Cole
Kaye R. Kiddoo
Clarence W. Bassett
Natalie J. Lowe
Ens. Marvin D. Burns
Lt. Robert S. Lucas
Bertha C. Carter
Fred R. Simpson

JULY 7

Janet B. Wimberly
Richard A. Watkins
Richard Kanakanui
J. D. Kilpatrick, II
B. Davis Godbold

JULY 8

John B. Hering

JULY 9

Alan S. Holzman
Mrs. Phyllis Halstead
Mrs. William C. Avery
Alexander G. Smith
H. W. Kerley

JULY 10

Roy J. Leffingwell
Jere W. Smith
Charles P. Evans
Mrs. John A. Erickson
Charles A. Guard, Jr.

JULY 11

Frank L. Bellows
Ann M. Hearon
Mrs. G. LaRue Derr
Edward Von Geldern
James B. Wilson
L. M. Russell
G. B. McLean

JULY 12

Mrs. K. R. Brockman
Ernest Fraser

JULY 13

James C. Clarke
Mrs. Anne Wilson
Stephen R. Landau

JULY 14

James W. Austin
Helen Lowrey
William H. Coney
John H. Spiller, Jr.
Miss Jan Collins
Capt. D. H. Dexter
A. Gweneth Gibbs

JULY 15

Henry C. Lamond
Charles Fisher
Ronald D. Higgins
Francis Owens
Arthur A. Cameron
Dick Ednie

JULY 16

Dr. H. S. Dickson
Mrs. Marion B. Guy
Otto Ludewig
Mary McKeever
Mrs. K. L. Young
Jos. A. Gage, Jr.
Mrs. F. M. Cleavinger

Ian Robertson
S. B. D. Wood, Jr.
F. H. Lindus

JULY 17

Stewart E. Fern
George J. Turner
Ruth Veil
Allan J. McGuire
Lorine L. Abbott
Ned S. Jarvis
Elbert P. Tuttle
William Beamer, Jr.
Mrs. B. J. Richards
Jay F. Carlisle, Jr.
Arthur G. Smith
Yvonne M. Mendonca

JULY 18

Chad Dunstan
Merson L. Skinner, II
Orville T. Magoon
Harry L. Denison
Mrs. Grace Radcliffe

JULY 19

Vincent H. Cozmas
Fred R. Kingman
Wm. H. Mountcastle
Gerry Robinson
Mrs. Faye McClure
Mrs. James O. Price
Michael Carney

JULY 20

Carl F. Brainard
E. St. J. Griffith, Jr.
John H. O'Neill

JULY 21

Dr. J. T. Lucas, Jr.
T. Jack Foster, Jr.
Capt. Art E. Orvis
Gary Celli

JULY 22

V. S. K. Houston
Seymour Shingle
Frank A. Halford
Gertrude MacNaughton
Allen W. Wooddell
Suzanne W. Phipps
Laurie M. Ames

JULY 23

Edric D. Cook
Orla Howell
Brig. Gen. C. C. Nast
Capt. R. H. Fairchild
Carter Galt
Clark T. Durant, II

JULY 24

Dr. S. J. Beardmore

Edward A. Bolles
Alexander L. Faye
Edw. J. Greaney, Jr.
Barbara Kahanamoku
Paul L. Wysard
Mrs. Jane H. Otto
Miss Barbara Thompson
Kenneth H. Dillingham
R. P. R. Neilson, III
M. R. McClaire
B. M. Watson

JULY 25

Carol Lynn Akana
Capt. G. P. Chung-Hoon
J. J. Hollinger
C. E. Hughes, Jr.
Mrs. Leslie Wheeler
Nason E. Newport
B. B. Cassidy, Jr.
J. C. Pell
Noel A. Troy, Jr.
Mrs. Sylvia A. Mullin
W. S. Wilson

JULY 26

Edward O. Rice
Barbara Borthwick
David G. Rietow
Mrs. Adelino Jardin

JULY 27

Frank Ruwe

JULY 28

Ted Benedict
Chester O'Brien
Patricia Pell
Frank Damon

JULY 29

Paul M. Simpson
William R. Eckert

JULY 30

Dr. Robert Sample
William B. Watson
Robert Hinkleu
Colleen McCorriston
Samuel E. Woolley
Joan M. Spangler

JULY 31

L. Verne Hass
Hugh Howell
Carlos W. Long
Herbert M. Taylor
Keith Kaneta
Mrs. Lorraine Kelley
Lt. Col. A. Gentleman
Mrs. Norma C. Cook
M. Hovey Harris

THREE TEAMS TIED

It's a three-way tie in the Wednesday night six men volleyball tournament as we go to press.

The squads headed by Bill Cook, George Downing, and Thad Ekstrand all have three wins apiece.

The squads captained by Jack Cross, J. W. Casey, and Fred Hemmings all have one win and two losses on their records.

APPLICANTS FOR MEMBERSHIP

The following have applied for membership in your club. It is the duty of every member to examine these names closely and if for any reason they object to an applicant's acceptance

Regular

Stuart K. Hart
Henry W. Grant
Roger W. Martin
Mrs. Gwendolyn T. Tyler

Junior

Geoffrey S. Avenry
Susan L. Stevens
Kathleen Townsend
David T. Pietsch, Jr.
Carol Ann Foster
Sara S. Halstead

Non-Resident Service

CDR. John H. Gilpin, Jr.
Kenneth J. Pratt
Norma M. Brown

Sponsored by

F. W. Stone
A. Gay Harris
Grace M. Grace
J. P. Leebrick

A. K. Schofield
Allan Ledford
F. M. Hemmings
Jack Cross
Preston Moody
Sylvia Harding

Seconded by

W. H. Walsh
Rose A. Sylva
R. C. Durant, M.D.
J. Haglund, Jr.

J. C. H. Brown
F. M. Hemmings
W. W. Monahan
Kenneth Makinney
Nat Norfleet
Robert Millard

Associate

Henry J. Hollinger, Jr.
J. H. Black
John J. Hollinger



ALOHA AND BON VOYAGE—Martin Anderson, club vice president is shown presenting Sam Fuller, former president and retiring director, with a suitcase as a token of appreciation for his many years of service to the club. In the picture to the right, club president R. Q. Smith is shown with Mr. and Mrs. Ernie Stenberg who also received handsome luggage on his retirement from many years service to the club, including the last 17 years as Forecast editor. The presentations were made at a dinner attended by Club directors and committee heads.

ALOHA NEW MEMBERS

Listed below are a number of new members accepted during May. To them we extend our aloha and the hope that their membership in the OCC will result in dividends of health, recreation, good fellowship and fun.

On another page in the *Forecast* will be found listed officers, directors and Committees which help the Club function. Any constructive suggestions, requests for information or desire to participate in Club activities should be directed to the proper party. The Club personnel will gladly extend informa-

tion as to Club facilities and rules and regulations.

All members are requested to welcome these new members and extend them every courtesy.

New members approved by Admissions Committee

Regular — George B. Weiss, John Linkie.

Junior — William Robert Eckert, Paul Holmes Gebauer, Terry Ledford, Hilary Ledford, Clark T. Durant, II.

Service — Lt. Wendell E. Webber.

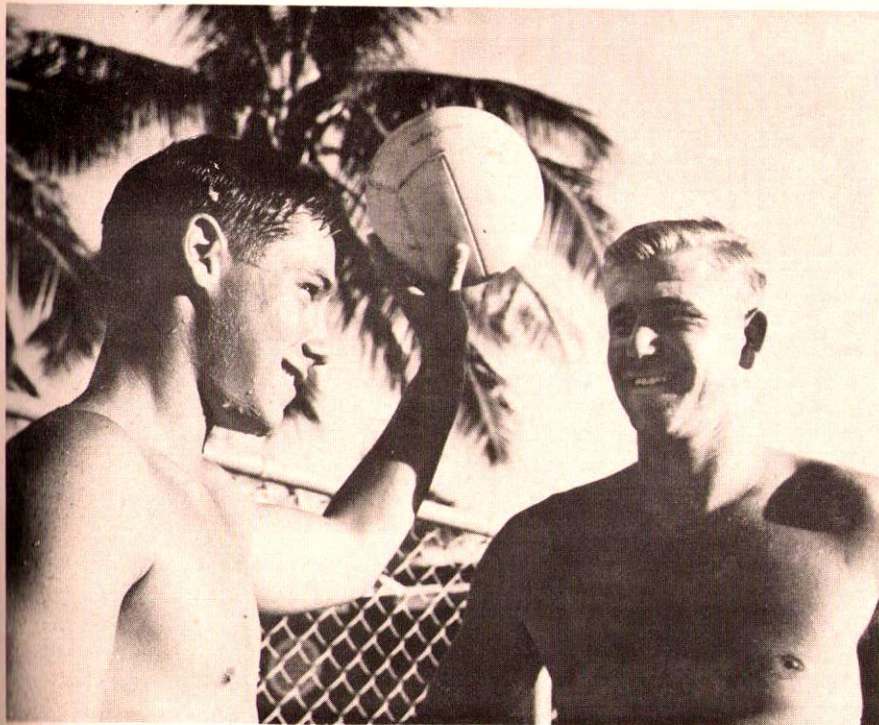
Passed by Board of Directors on May 6, 1958.

Forecast Advertising Rates

Full Page	\$50.00
1/2 Page	30.00
1/4 Page	20.00
1/8 Page	12.00
December Issue Color	
Page Ads	50% additional

YOUR AD

REACHES 2300
members and their families
if it is in the
"FORECAST"



SR.-JR. DOUBLES CHAMPIONS—Bill Danford and Tommy Haines.

\$urfing



at

Waikiki

CANOE RIDES
SURFING
LOMI LOMI
SURFBOARDS
BATHING SUITS
BATHING CAPS
LOTIONS
SUPPLIES
SURF
PHOTOGRAPHY

SURF PHOTOGRAPHY

UMBRELLAS FOR RENT

OFFICIAL TICKET AGENCIES FOR CATAMARAN
"MANU KAI"

SPECIAL RATES TO O.C.C. MEMBERS

OUTRIGGER CANOE CLUB BEACH SERVICES

Phone 991-564



Eleven Expert Men On Hand To Serve You

AFFILIATED CLUBS

Aero Club of Oregon, Portland, Oregon.
 Arizona Club, Phoenix, Arizona.
 The Austin Club, Austin, Texas.
 Balboa Bay Club, Newport Harbor, California.
 Cleveland Athletic Club, Cleveland, Ohio.
 Club Del Mar, Santa Monica, California.
 College Club of Seattle, Seattle, Washington.
 Coral Casino Beach and Cabana Club, Santa Barbara, California.
 Cork Club, Houston, Texas.
 Country Club of Peoria, Peoria, Illinois.
 Davenport Club, Davenport, Iowa.
 Deauville Club, Santa Monica, California.
 El Paso Club, Colorado Springs, Colorado.
 Jonathan Club, Los Angeles, California.
 Kona Kai Club, San Diego, California.
 La Jolla Beach & Tennis Club, La Jolla, California.
 Lake Shore Club of Chicago, Illinois.
 Los Angeles Athletic Club, Los Angeles, California.
 Milwaukee Athletic Club of Milwaukee, Wisconsin.
 Multnomah Athletic Club, Portland, Oregon.
 New York Athletic Club, New York, New York.
 Old Pueblo Club, Tucson, Arizona.
 Olympic Club, San Francisco, California.
 Pasadena Athletic Club, Pasadena, California.
 Pacific Coast Club, Long Beach, California.
 Press and Union League Club of San Francisco.
 Riviera Country Club, Pacific Palisades, California.
 San Diego Club, San Diego, California.
 Shadow Mountain Club, Palm Desert, California.
 Tulsa Club, Tulsa, Oklahoma.
 University-Union Club of Tacoma, Washington.
 Washington Athletic Club, Seattle, Washington.
 Hilo Yacht Club, Hilo, Hawaii, T. H.
 Kauai Yacht Club, Lihue, Kauai, T. H.
 Maui Country Club, Maui, T. H.
 American Club of Guatemala, C. A.
 American Club, Mexico City, Mexico.
 Calgary Petroleum Club, Calgary, Alberta, Canada.
 Carleton Club, Winnipeg, Manitoba, Canada.
 Casino De Parral, Parral, Chihuahua, Mexico.
 Chihuahua Foreign Club, Chihuahua, Mexico.
 Club Campestre Cuscatlan, San Salvador.
 Edmonton Club, Edmonton, Canada.
 Monterrey Foreign Club, Monterrey, Nueva Leon, Mexico.
 Pacific Club, Victoria, B. C., Canada.
 South Yarra Club, Melbourne, Australia.
 Tattersall's Club, Brisbane, Australia.
 Tattersall's Club, Sydney, Australia.
 Terminal City Club, Vancouver, B. C., Canada.
 Twenty-one Room Club, London, England.
 University Club of Vancouver, Vancouver, Canada.
 Vancouver Club, Vancouver, Canada.
 Vernon Club, Vernon, B. C., Canada.
 Waikiki Club, Lima, Peru.

for a



high return

in good taste,

always ask for flavorful

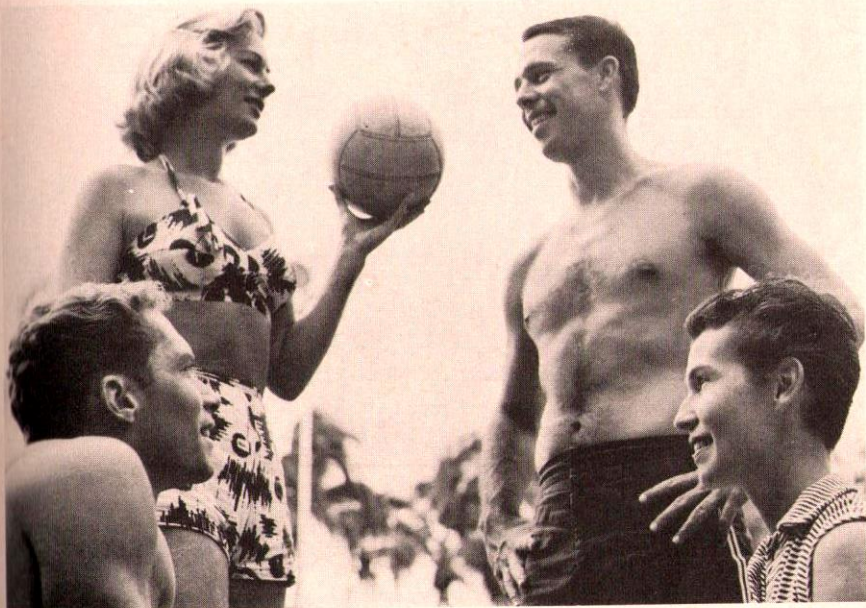


Olympia Beer



"It's the Water" that makes the difference

VON HAMM-YOUNG CO., Territorial Distributors



MIXED DOUBLES—Champs and Runners-up—Lynn and Bill Heibra, Ron Sorrell, Melba Snyder.

THE SHOWPLACE OF THE ISLANDS



Queens Surf

ON THE BEACH AT WAIKIKI
COCKTAILS AND DINNER
in the Polynesian Gardens
nightly (except Mondays).
LUAUS every Thursday and
Sunday. DANCING UNDER
THE STARS and HAWAIIAN
ENTERTAINMENT nightly
(except Mondays) at 10,
12, 1:15.

FISHERMAN'S WHARF

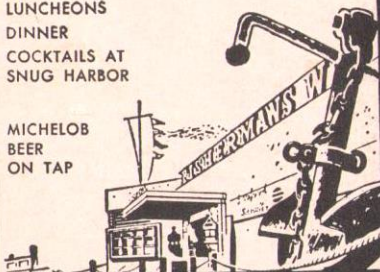
Honolulu's Famous Seafood Restaurant
located on the wharf at Kewalo Basin.

LUNCHEONS

DINNER

COCKTAILS AT
SNUG HARBOR

MICHELOB
BEER
ON TAP



TAHITIAN LANAI

on the Beach at the Waikikian Hotel
Enjoy the Gay Abandon of Tahitian Atmosphere

Daily 7:30 a.m. to 10 p.m.

A la Carte Breakfast and Luncheon
Complete Dinners from \$3.75

Cocktails in the
PAPEETE BAR I
11:00 a.m. to
closing

Piano Bar Music
from 9:00 p.m.

Service around the
pool or on the
Lanai



The Gourmet



Good food superbly pre-
pared—an attractive,
friendly atmosphere.

COMPLETE DINNERS served
6:00 p.m. to 11:00.

LUNCHEONS daily.

COCKTAILS from noon.

Paul Conrad at the PIANO
BAR nightly.

Royal Block — Kalakaua Ave.



TOPS

COFFEE
SHOP

Always open. Good food and fast service.
Delicious, juicy carved-to-order sandwiches
served in the Clown Room Cocktail Lounge
from 11:30 a.m. to 2:00 p.m. (except Sun-
days). Cocktail lounge open from 10:30
a.m. until 1:00 a.m. (2:00 a.m. Fridays and
Saturdays). Across from Kaiser Dome.

Kopper Kirchen

The Newest
COFFEE SHOP
IN
WAIKIKI

Royal Block
Kalakaua Ave.

