

the **Outrigger**

November 1990



Na Wahine O Ke Kai

Outrigger's women of the sea were truly impressive in the 12th annual Na Wahine O Ke Kai, women's Molokai to Oahu canoe race, September 30.

OCC's open crew finished third overall to five-time winner Offshore Canoe Club of Newport Beach, California in the 41-mile race. Healani was second. All three clubs came in under six hours.

Both Offshore and Healani broke the course record of 5:59:36, with the California club finishing in 5:44:13 and Healani in 5:49:40. Outrigger was timed in 5:59:51, just 15 seconds over the old record.

This year for the first time, OCC entered a crew in the masters division. The masters won their division and finished 17th of 28 crews overall. Their time was 6:36:28.

Both crews competed in the fiberglass division, with the open crew in the Iwalani and the masters crew in the Holomalie.

Coaching the open women was Walter Guild. Tay Perry was the masters coach. 🍷



Jenny Scafe gives a high five.



Sarah Reilly and Genie Kincaid celebrate at Ft. DeRussy.



Nalani Blaisdell interviews Kisi Haine.



Allene Richardson and Peggy Danford get a hug from Doc Bintliff.



Trevor Crabb was happy to see mom, Paula, and Katy McCrary at end of race.

Open Crew

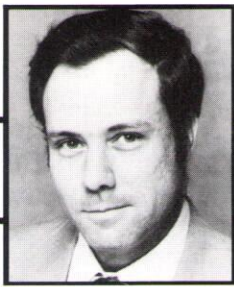


Paula Crabb, Kisi Haine, Mary Smolenski, Sarah Reilly, Genie Kincaid, Kaili Chun, Katy McCrary, Cathy Ho, Tiare Richert-Finney, Liz Perry-Dugan, Katy Bourne, Jenny Scafe.

Masters Crew



Front, Carolyn Lass, Sue May, Doc Bintliff, Jeanne Jenkins. Back, Maureen Kilcoyne, Ann Cundall, Diane Stowell, Carol Wilcox, Peggy Danford, Kathy Clifford, Darcy Ames, Allene Richardson.



AROUND THE CLUB

By Raymond Lugwig, General Manager

By the time you read this, the improvements to our Snack Shop should be complete. The objective was to brighten up the area and generally give it a new fresh appearance.

We have added additional counter space to facilitate the writing of chits and reduce the over crowded conditions which at times occur at the main counter. We have redesigned and lowered the condiment counter to facilitate access by children.

All the dark laminate on the counters has been replaced with a lighter brighter material. The ceramic tile beneath the main counter has been replaced, again with a much lighter color tile.

I believe the overall result is a marked improvement. There still remain items that need to be looked at and improved upon.

Some of these items are: provide more easily accessible trash receptacles with front swing or top loading openings; provide small tables which have the flexibility to be arranged to suit groups of various sizes; continue to look for a suitable floor covering for the Snack Shop area.

The B&G committee is also hard at work on designing a protective trellis which would improve the overall appearance, provide protection from the occasional volleyball which has been known to hit unsuspecting diners, and also eliminate the sand problem.

Val Ossipoff is working on the design for this project together with the Club's architectural review committee. We hope to be able to bring to the board an acceptable design shortly.

I will keep you informed as to our progress with regard to this project.

Beach Access Project

One other capital improvement project which is very close to realization is our beach access project. Hopefully by the time you read this, we will have been granted the necessary permits and state approvals and be well into the bidding phase of the project.

Simply stated this project will provide concrete stairs starting at the Club property line and proceeding up into the Club

beach. This will, we hope, make it easier to enter the Club from the beach, especially during those times when the sand is eroded. There are times, as you know, when that step-down can be a big one.

The benefits of the new stairs are twofold: ease of access and improved retention of our beach sand. We hope to have this project complete by year's end.

Thanksgiving

Thanksgiving will be here before we know it. We will again this year feature a Thanksgiving buffet with all the traditional goodies and some offerings which are uniquely Outrigger. The price for the buffet will be \$16.95 per person, children under 12 years \$9.95.

The Dining Room will be open from 4:30 to 8:30 p.m. I would strongly recommend you make your reservations as early as possible.

Keiki Christmas Party

It's never too early to make your Christmas and New Year's reservations either.

Our annual Keiki Christmas Party is scheduled for Monday, Dec. 17 at 5 p.m. All members, their children and grandchildren are welcome. When making your reservations for this function, please give us ages and sex of children.

Monday Night Football

Our Monday night football parties have been well attended and a generally good time is had by all. Now that we're getting close to the playoffs, if you haven't been able to get down to the Club yet this season it's an especially exciting time to do so.

New Soup & Salad Bar

Starting in November we'll be offering a Soup and Salad Bar during lunch, Tuesdays through Saturdays, from 11:30 a.m. to 1:30 p.m. We will feature several salads, assorted fresh fruits, choice of dressings, bread and assorted rolls, sliced cold cuts and hot soup.

Our new Soup and Salad Bar will be in addition to our regular luncheon menus. The Salad Bar will be set on the Bar Lanai and be available to both patrons of the Hau Terrace and Dining Room.

Be sure to stop by the Club and give it a try and let me know what you think.

New Telephones

Have you seen, touched or had the experience of using the Club's new telephones? On September 11, 1990, we converted to the AT&T System 75 Digital Telephone System. With this system, came new state of the art features we never had before.

You as a Club member now can call directly to certain extensions without going through the reception desk, thus saving you time and adding convenience to your busy day.

These special direct dialing stations are:

Reception Desk	923-1585
General Manager	921-1400
Executive Office	921-1404
Comptroller	921-1410
FAX	921-1414
Beach Shop	921-1432
Dining Room	921-1444
Beach Attendants	921-1460
Operator	921-1485

Pocket size cards with these numbers have been mailed to each member. However, additional cards are available at the Front Desk.

For those of you who want to use toll free numbers, like 800 Series, the two telephones in the lobby are programmed to accept these numbers without the reception desk operator's help. Additionally, all telephone calls that are put on hold will have music from the Club music service. All of the instruments have been labeled with the other features that are available to the telephone user.

Each telephone station also has a list of telephone extensions to aid you in calling others within the Club.

If you have any questions or recommendations, regarding our new telephone system, please do not hesitate to contact me.

One last thing, don't forget to vote on Nov. 6. ☺

AS THE TERRACE TURNS

By Mary Machado

Dustin Sellers won the 1990 University of Southern California's top fraternity athlete award. Thirty USC fraternities pit their two best athletes (including some in intercollegiate sports) over a three week competition in all major sports. And Dustin won. He's a member of Phi Delta Theta fraternity. He's a senior in the Entrepreneur Program of the Advanced Business School.

Ron Sorrell sent along a clipping from the Salt Lake Tribune where he reminisced about Duke Kahanamoku and his youth in Waikiki. . .

Anita Brightman sends along news about Bob Fischer. She visited him recently and says he seems to be doing very well in the Seaview Convalescent Hospital in Eureka, California. He can walk around and greets people with aloha. He's enjoyed the letters he's received from friends at the Club and she hopes

members will continue to write to him.

Pumehana Davis was featured in the Hawaiian Airlines in-flight magazine in September in a story about the harp playing of sister Momi Reily and herself.

"The View From Diamond Head" lecture put on by the Historical Committee was a definite crowd pleaser. In addition to a fine slide presentation by Don Hibbard with many excellent photographs and a very informative narrative, the kaukau preceding the show was definitely ono. About 150 enjoyed dinner and 175 watched the show.

While the slide show was going on in the Dining Room, the Monday Night football crowd enjoyed the game in the Bar.

Contributions to this column are always welcome. Leave items for the Editor at the Front Desk. ☺



The Historical Committee asks our help in identifying the people in this photo. They'd also like to know when the photo was taken and why. If you have any information, please leave it at the Front Desk for the Historical Committee.



Photographer Twain Newhart sends along this photo of blond bimbos "Dolly" Kresser and "Squeaky" Kirkpatrick that he shot one hot summer afternoon at the Club.

Rick

Golt

THE RICK GOLT 1991 IMAGES OF HAWAII CALENDAR • SIGNATURE EDITION

PLEASE SEND ME _____ (QUANTITY) 1991 IMAGES OF HAWAII CALENDARS AT \$15.00 EACH, INCLUDING INDIVIDUAL MAILERS AND USPO PRIORITY MAIL DELIVERY. OR LET US MAIL DIRECTLY TO YOUR FRIENDS WITH A GIFT CARD, SEND LIST

NAME _____

ADDRESS _____

CITY _____ STATE _____ ZIP _____

PREFERRED PAYMENT METHOD (CHECK ONE)

CHECK OR MONEY ORDER ENCLOSED VISA MASTERCARD

CARD NO. _____ EXP. DATE _____

SIGNATURE _____

EXCLUSIVE, LIMITED EDITION
THE 1991 IMAGES OF HAWAII WALL CALENDAR
 AVAILABLE BY MAIL ORDER ONLY
 DIRECTLY FROM RICK GOLT,
 HAWAII'S FINE ART PHOTOGRAPHER.

AN INTIMATE PORTRAIT OF THE ISLANDS
 UNFOLDS ON EACH OF THE 12 FULL COLOR PAGES.
 PRINTED IN THE FINEST MUSEUM GRADE LITHOGRAPHY,
 THE 12 x 18" CALENDAR IS SPIRAL BOUND,
 READY TO HANG AND SUITABLE FOR LATER FRAMING.
 A QUALITY GIFT FOR YOURSELF AND OTHERS.

Castle Swim Slated Nov. 25

By Gerry DeBenedetti

Members are invited to participate in the Castle Swim on Sunday, November 25. The swim is approximately 1 1/4 miles from the old Club location at the Outrigger Hotel to our Club beach.

Check in time is 8 a.m. on the Hau Terrace. Register in advance at the Front Desk so there will be enough breakfast for

everyone afterward. There is no entry fee.

Swimmers are invited to provide their own escorts on paddleboard, kayak or canoe. Escorts are also invited to breakfast after the swim.

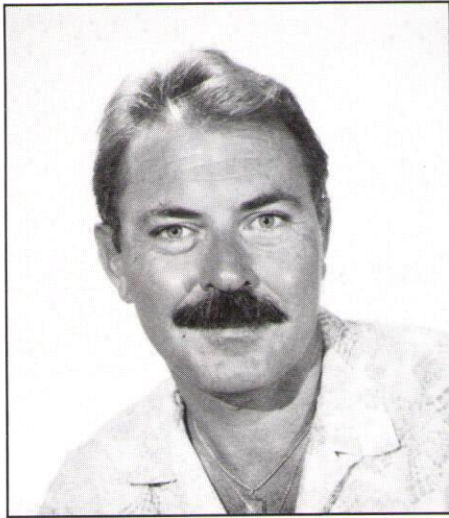
Awards will be given in every age group in five year intervals up to and

including the oldest swimmer. The event is open to members only.

Mileage awards will also be given at the breakfast. If you've been logging your miles and are eligible for a mileage award, please be sure to come to pick it up. ☺

The New "Ted"

By Gerry DeBenedetti



Outrigger welcomed a new assistant manager, Ted Nicolaou, at the end of September. Ted comes to us via Greece, Switzerland, the Caribbean, New York, the Kaimana Beach Hotel, the Hanohano Room and Andrews.

Holding dual citizenship from Greece and the United States, Ted speaks with a lovely accent.

Ted came from Greece a "long time ago" where he got his start in a Navy Officer's Club. He was last in Greece a few months ago when he allowed his mama and papa and all his other relations to fatten him up with home-cooked Greek food.

A resident of Kaimuki, he has been in Hawaii 12 years. His athletic interests are swimming, gardening, tennis and bicycling.

What does he like about OCC?

"The casual elegance and the food."

What are his plans for OCC?

"Improved service."

Alright, Ted! Welcome to OCC. ☺

Thanksgiving Buffet Dinner

at the Outrigger Canoe Club
Thursday, November 22, 1990

APPETIZERS & SALADS

New England Clam Chowder * Pumpkin Vichyssoise
Marinated Mushrooms * Sashimi * Tako
Smoked Mussels * Bay Shrimp * Asparagus
Red Leaf Lettuce * Belgian Endive * Beef Steak Tomatoes
Japanese Cucumber * Maui Onions * Red, Green, Yellow Bell Pepper
Seafood Salad with Apple * Artichoke Hearts * Avocados
Pasta-Pesto Salad * Assorted Sushi * Potato Salad * Crudite

ENTREES

Roast Young Tom Turkey with Macadamia Nut Stuffing
Baked Ham, Bing Cherry Sauce
Filets of Mahimahi Saute, OCC
Shrimp, Scampi Style, with Fresh Mushrooms
Carved Prime Ribs Au Jus, Horseradish
Buttered Harvest Vegetables * Orange Cranberry Relish
Glazed Yams * Snowflake Potatoes

DESSERTS

Pumpkin Pie, Chantilly * Mincemeat Pie, Brandy Sauce
Apple Pie, Cheddar Cheese * Cheese Cake, Strawberries
Chocolate Mousse * Creme Caramel * French Pastries * Baklava
Brownies and Assorted Cookies * Mandarin Haupia
Selection of Cakes * Fresh Seasonal Fruits
Isle de France Brie, Sliced Baguettes

RESERVATIONS

4:30, 5, 6:30, 7, 8, 8:30 p.m.

ADULTS: \$16.95

CHILDREN UNDER 12: \$9.95

PHONE: 923-1585

DINING ROOM: 921-1444



Life Member: Mariechen "Squeaky" Wehselau Jackson

By Allene Richardson

A Guinness Book of Olympic Records holder, a Punahou "O" "Man" and member of Punahou's first Athletic Hall of Fame, and a Life Member of the Outrigger Canoe Club--this is Mariechen "Squeaky" Jackson.

Born Mariechen Wehselau on May 15, 1906 following her parents' move from Bremen, Germany, Mariechen or "Squeaky", attended Punahou School from 1912-1923 and Phillips Commercial School. Squeaky joined the Outrigger in November of 1919. "It was 1919 that I joined the OCC as a 'guest' member because women were permitted only to be guests in the 'men's club' at the time. It was when I started training for swimming meets under the direction of Dad Center," she said.

"I learned to swim in the old pool at Punahou School. I believe it was only 20 yards long, if that. It was filled on Mondays and drained on Saturdays. Mrs. Driver was my first instructor. Then Helen Jones Farrar took over. She was wonderful."

Dad Center also trained Squeaky at the Outrigger and she participated in many swimming events representing Outrigger. "I remember way back when the Uluniu Club was next door to the OCC. We used to wear smocks over our bathing suits which reached to our knees!"

While still a student at Punahou, she became a swimming instructor for other Punahou students.

In 1924, Mariechen participated in the Olympic Games tryouts at Briarcliff Lodge, New York, representing Hawaii and the Outrigger. At the tryouts, she won the 100 meters and made the Olympic team competing in Paris.

During the semi-finals, she broke the world record in the 100 meters but was beaten in the finals with a slower time. As a result, she held the world record but received the Silver Medal.

At the same Paris Games, Squeaky swam the anchor for the 400 meter relay, winning the Gold and breaking the record. Both of these records are in the Guinness Book of Olympic Records.

On March 4, 1926 the Board of Directors of the OCC, with Allen McGuire



signing the letter, extended Life Membership to Squeaky.

She continued to swim and that year went to the nationals in Florida and competed in Canada. Squeaky continued her teaching with Dad Center, helping him train students until 1937.

"From 1928 to 1937, I helped Dad Center train the youngsters every Friday night rain or shine. Dad was a wonderful swimming coach who did so much for all the youngsters in the swimming world," she added.

Always a water person, Mariechen began paddling in 1931 and steered for Dad in the first girl's canoe race and continued to paddle thereafter.

Life changed in 1937 when she met and married Chester A. Jackson in New York City, but she continued to be active in

Outrigger and other community activities.

In 1952, demonstrating creativity and artistic flair, Mariechen organized and founded the Hawaii Handweavers Hui, an organization of creative weavers.

In 1960, she was the first woman elected to the Board of Directors at OCC. "I served for a couple of years. It was an interesting experience." She also served on many Club committees, including chairperson of the Historical Committee in 1968.

She was made a number of Punahou's first Athletic Hall of Fame, the "O" Men in 1980 and was permanently enshrined at the International Swimming Hall of Fame at Fort Lauderdale, Florida on May 12, 1989.

Currently retired from community work, Mariechen lives in Waimea, Hawaii and continues to weave. She exhibits her wall hangings on the Big Island and is a member of the Waimea Arts Council and the Fibers Hui of Hawaii.

As a founding member of the Hawaii Handweavers Hui, she was recognized on June 10, 1990 with a koa weaver's shuttle and certificate from Governor John D. Waihee.

Mariechen "Squeaky" Wehselau Jackson is truly a model OCC Life Member. ♪

Private Parties

Did you know that the Club has party rooms available for private luncheons, dinner parties and other events?

You may select from the Duke Kahanamoku Room, Koko Room, A, B and C Dining Rooms.

These rooms can be obtained independently or used in combinations by members for special events, Monday through Sunday.

Chef Teruya and his staff are prepared to fulfill your gastronomical desires for all such events.

To reserve a room or plan an event, call Ike or Liz at 921-1445.

To reserve rooms for special events during the holidays, call as soon as possible. ♪

Hayride Hoedown is Down Home Fun

By Mike O'Connor

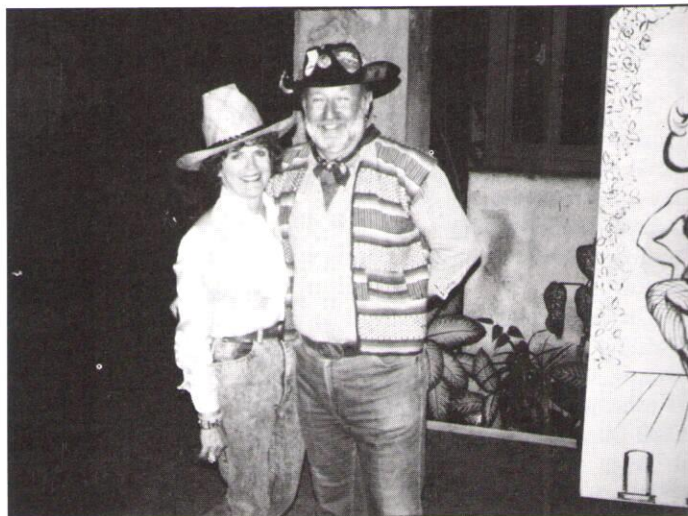
More than 150 cowpokes enjoyed delicious food, a hayride, great music and country dancing at the OCC Hoedown Hayride on September 23. The chuckwagon menu included barbecue, baked beans and corn on the cob. The Mason-Dixon Band provided country western music. Donna Lee a disc jockey from KDEO Radio emceed the program with dancing by the KDEO Country Dancers. 1) Club members joined in the dancing. 2) Enjoying the evening were Shannon Uda, Angela Popa, Cindy Couture and Diane Fritz. 3) Val and Rick Davis took pictures of the guests. 4) Two Budweiser Clydesdales pulled members in a haywagon around Kapiolani Park. 5) The KDEO Dancers.



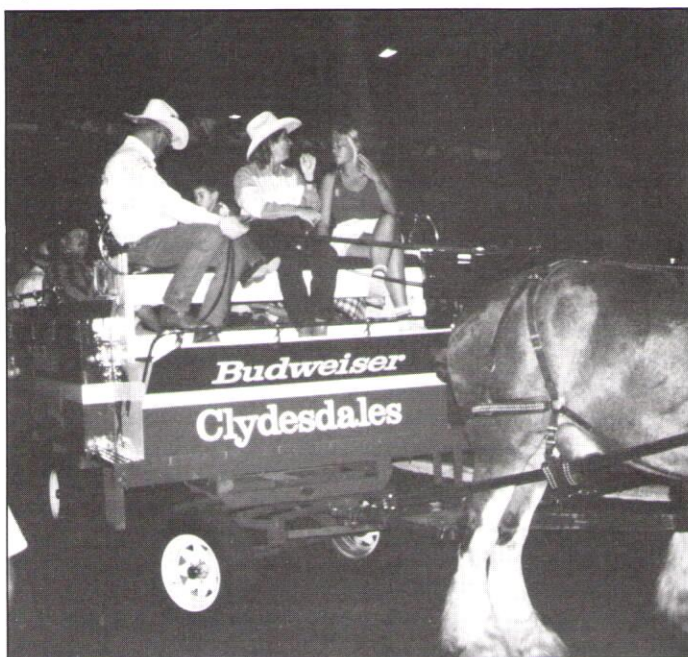
1)



2)



3)



4)



5)

ODKF Elects Three to Board

By Gerri DeBenedetti

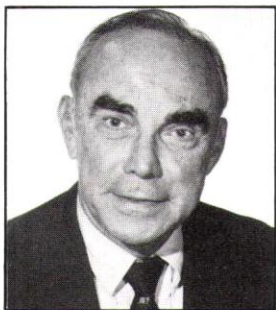
Three long-time community leaders have been elected to the Board of Directors of the Outrigger Duke Kahanamoku Foundation.

They are Wilmer C. (Bill) Morris, Arthur B. Reinwald and Alexander (Lex) Brodie.

According to ODKF President Tom Lalakea, the three have agreed to contribute their time and talents towards building a significant athletic-scholar organization in the Pacific.

"The ODKF cannot help but succeed with the collective talents and enthusiasm of our Board," Lalakea added.

Morris, an OCC member and former canoe paddler, is senior vice president in the real estate division of Bishop Trust Company. Active in many community groups, Bill's special interests have been Friends of Iolani Palace, Punahou Alumni



Morris



Reinwald



Brodie

Association, Bishop Museum Association and various community groups. He is a trustee of Mid Pacific Institute.

Reinwald, also an OCC member, is an attorney with Reinwald, O'Connor Mar-rack Hoskins & Pleydon. His background is in economics as well as law, and he has been an instructor at Drake and the University of Hawaii Law Schools. He is currently a trustee of the Tax Foundation of Hawaii and writes articles on Hawaii taxation.

Brodie is familiar to all of us as presi-

dent of Lex Brodies Tire Company and we've all seen him in his television commercials "thanking us very much." Lex was a member of the OCC in 1925 at the former Waikiki site and has been an avid surfer all his life. He has a background in accounting and small business activities. Lex

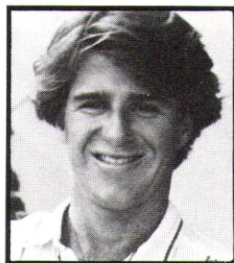
was recently named to the Junior Achievement Business Hall of Fame for his "enduring contributions to business and community and . . . a figure of inspiration for the youth of Hawaii." This award resulted in a TV special on Lex and the other six recipients of the JA Award.

The ODKF is currently embarking on a year-end fund raising activity to invite Outrigger members to become Gold Medalists of the ODKF.

Members It Pays to Know

MATT KRESSER

Realtor Associate
Res: (808) 737-9724
Cellular: (808) 225-3515



HELEN PRICE INC. REALTORS

3566 Harding Avenue/Suite 202
Honolulu/Hawaii 96816
Office: (808) 735-5533
Fax: (808) 735-1366

L M S
LUCAS MARKETING
& ASSOCIATES
SERVICES

- Advertising Consulting
- Product Promotions
- Public Relations
- Talent Management

700 Richards Street
P.O. Box 10711
Honolulu, Hawaii 96816

Emery Lucas
President

Phone: (808) 537-6190
Fax: (808) 536-4836

KEA'S STUDIO-CUSTOM FRAMING

A Vast Range of Framing Options at Reasonable Prices

- Koa & European Mouldings
- Shadow-Box Frames • Oval Mat Cutting
- Wet, Dry and Museum Mounting
- Contract Framing for Hotels & Condominiums

Kehaulani Kea, Owner
3207 Martha St., Honolulu

737-9944

- Up to 5 Quarts Pennzoil
- New Oil Filter
- Lube Chassis
- Check & Top Off Fluids
- Anti-freeze
- Battery
- Brake
- Differential
- Power Steering
- Transmission
- Windshield
- Clean Air Filter
- Inspect Belts & Hoses
- Inflate Tires
- Fully Insured
- Service Work Guaranteed
- Disposal of Used Oil

Mobile Lube Express
The Oil/Lube that comes to you.

Kepa Cummings
By appointment
262-8000

R FOR HEALTH

By Bob Smith, M.D. and Chet Nierenberg, M.D.

Q. I paddle canoes but my shoulder hurts in the back near the shoulder blade. I have tried many different treatments but none have helped. Any suggestions?

A. That's a tough one. It is important to be checked by a doctor who is familiar with this type of problem. The most common injury among paddlers that does not respond quickly is a tear of the rhomboid or levator scapulae muscle. The tear may heal with scar tissue, creating a trigger point.

If you've had the injury longer than a few months, a well placed cortisone injection and/or specialized physical therapy program is definitely in order.

Q. How can I prevent this injury in the future?

A. That's an easy one. You should do at least three months of pre-season training to develop strength, endurance and excursion or length of the muscles of the shoulder girdles, i.e. the muscles that hold the shoulder blades on to the back. These muscles include the rhomboids, levator scapulae and trapezius.

Q. What off season exercises should I do?

A. Chins, rowing machine, bent over rows with barbell or dumbbells, shoulder shrugs, rowing motion with pulley weights in seated position.

Aquatic exercises should include off season kayaking and paddle boarding.

Also standing in the water, put palms together straight in front of you, then pull backwards fast, feeling the resistance of the water against the back of the hands.

This develops the scapula adductors and stretches the pectorals (chest muscles) and shoulders.

Swimming develops endurance in the scapular muscles and all of the muscles of the back. Do all four strokes for endurance training to the shoulder girdle.

Aqua jogging not only involves the

legs but also the biceps, triceps and shoulder musculature and can be incorporated in your swimming work out.

Endurance ocean swimming creates a "feel" for the water so important for effective canoe paddling. Prepare for an injury free season and enjoy your workouts. 🚣

"BARRIER REEF"

THESE COORDINATES FROM REYN SPOONER ARE AS COMFORTABLE AS OUR ISLAND LIFESTYLE. THE EASY FITTING TOP CROPS AT THE WAIST TO OFFER A FLASH OF PINK TRIM ON THE ELASTIC WAIST SHORT. OUR MATCHING ZIP FRONT WIND SHIRT, LINED IN SOLID PINK, PROVIDES COVER WHEN BALMY BREEZES BLOW. ALL MADE OF COTTONY SOFT REYN FLEX WATERPRINTS™ NYLON IN JADE. AT KAHALA MALL.

Reyn's 



New Members

Regular: Valri Baker-Lundahl, Bernice Cromwell, James Groebe, Patrice Ho, Allan Jonsson, Duane Waters.

Intermediate: Bradley Johnson, Bonnie White.

Associate: Diane Brinck.

Junior: George Carayannis, Jon Haruguchi, Camille Kalama, Walea Kalama, Chuck Watanabe, Christopher Winn, Michael Winn.

Nonresident: Stanley Arnold, Karen Carlson, Virginia Karr, Neil MacKenzie. 🚣

Golf Chips From the 19th Hole

By Frank E. Walton

At press time Stan Brown, Jim Gaddis, Bruce Bolton and Archie Kaaua were the semi-finalists in the 1990 Club Match Play Golf Tournament.

Winner of the Brown-Gaddis match is to meet the Bolton-Kaaua winner this month to determine the Club's 1990 Match Play Champion.

In the Wahine Match Play, May Balding will meet Joie Gopez and Pam Dillingham will meet Merrill Cuttings in the semi-finals.

Hickam Tourney Dec. 11

The sixth and final 1990 Stroke Play Tournament will be held on Tuesday, December 11 at Hickam Air Force Base. The signup sheet will be placed in the golf folder at the Club Front Desk on November 11.

Outrigger members are reminded that

eligibility requirements for ALL 1991 Club golf tournaments will specify "active membership in the Outrigger Canoe Club Golfers."

OCC Golfers

The Outrigger Canoe Club Golfers is the formal name of the Golf Club authorized by the Board of Directors on July 28, 1988. We were established as a participating member golf club of the Hawaii State Golf Association and the USGA GHIN System in September, 1988.

Any Outrigger Club member may join the Golf Club by paying a nominal fee for HSGA and USGA GHIN System membership. Such membership provides updated golf handicaps directly from the USGA every four weeks.

Outrigger members who are already members of an HSGA/USGA GHIN Golf

Club may join the Outrigger Canoe Club Golfers as a multi-member. This allows them to return their golf scores through either club and the USGA then provides both clubs with the multi-members handicaps.

Currently, three Outrigger members are multi-members--Joie Gopez, Dicey Brinck and Archie Kaaua.

For more information on this subject, review a copy of the Constitution and Bylaws and the Minutes of the January 31, 1990 annual meeting of the Outrigger Canoe Club Golfers. They are in the golf folder at the Club Front Desk.

Applications for membership in the Outrigger Golfers are available in the folder along with information regarding both the Stroke Play and Match Play tournaments. ♣

New Telephones Ready for Use

By Sara Ackerman

For those of you who haven't noticed, the Outrigger has finally replaced those old muffled telephones with a much more updated system.

The reason for the replacement was simple--the old phone system was outdated. The most obvious difference to members will be the increased clearness. Well no longer have to ask "What?" three times in order to hear the other party.

Another feature of the new phones is the recall button, with which you can transfer calls to any other station at the Club. Although this was previously possible, no one know how to do it.

Now, phones have a list of numbers for other phones at the Club, such as the Snack Shop, Fitness Center or the Executive Offices.

The phones make it easier on the Front Desk receptionist because people will be able to dial the number or transfer calls by themselves.

Some things still remain the same--you'll still have to go through the Front Desk to make long distance calls and the familiar 923-1585 hasn't changed.

See the managers column, "Around the Club" on page 4 for a listing of the new direct dial numbers. ♣

FOR THE RECORD

Running

Old Pali Road Run
9/2/90 4.3 miles
Emery Lucas :31:04

Val Nolasco Memorial Half Marathon
9/16/90 13.1 miles
Emery Lucas 1:43:03
Russell Allen 1:34:04

Hana Maui Relays
9/22/90 Maui
OCC Gold I, 2nd Mixed, 5:48
(Russell Allen, Tanya Watumull, Emery Lucas, Bob Atkinson, Joanna Reinhardt, Joe Teipel)
OCC Gold II 6:28
(Hilary Lambert, Andrea Lehman, Tom German, Carole Wilbur, Steve Zak, Fred Hemmings Jr.)

Biathlon

Queen's Biathlon
9/9/90 Ala Moana Beach 2.5 mile run, 800 meter swim
Julie Freese :35:02
Mike Miller :27:46

Paddleboard

9/9/90 Waimea Bay to Alii Beach 4.6 miles
Fred Fong, 1st, Masters, :50:26
Kym McKenzie, 1st, Women's Open, :50:59

Canoe Racing

E Lau Hoe Na Wahine
9/9/90 Waikiki to Pokai Bay
Outrigger I, 2nd, 4:20:15.16
Outrigger II, 8th, 4:57:45.51

Skippy Kamakawiwoole Memorial Men's Race
9/16/90 Waikiki to Pokai Bay
Outrigger #1, 1st, Overall & Koa, 3:44:21
Outrigger #2, 4th Overall, 2nd Glass, 3:56:46
Outrigger #1 Masters, 6th Overall, 1st Masters, 4:06:15

Surfing

Hawaiian Federation Xcel Open Series
9/13/90 Diamond Head Cliffs
Nathan Wilbur, 2nd, Junior Men
Shandy Danford, 6th, Bodyboard Women
Flash Dubiel, 2nd, Grandmasters
Kimo Austin, 4th, Grandmasters



Enjoying themselves at the Hana Relays were Andrea Lehman, Hilary Lambert, Bob Atkinson, Tanya Watumull, Emery Lucas and Joanna Reinhardt.



Christmas Giving

From the Beach Shop

ADULT BEEFY TEE

Light Blue, Black, White, Red, Royal, Navy, Pink, Turquoise, Fuchsia, Grey, Green, Yellow
 Short Sleeve \$9 ea.
 Short Sleeve Neon \$13 ea.
 Long Sleeve \$13.50 ea.
 S-XL



ADULT TANK TOP

White, Red, Royal, Navy, Pink, Turquoise
 Regular \$7.75 ea.
 Neon \$11.50 ea.
 S-XL



POLO SHIRTS

Red, Lt. Blue, Blue, Mint, Royal, White, Jade, Teal
 100% Cotton S-XL \$30

BAGS

Gym Bags \$13.50 ea.
 Warrior \$23 ea.
 Paradise Tote \$25.95 ea.

RIGGERS SHORTS

Colorful printed shorts
 Cotton Print \$27 ea.
 Neon Print \$30 ea.
 S-XL



LADIES COVER UP

Stripes \$19.50 ea.
 Sold \$16 ea.
 Tank \$14 ea.
 S-L



BEACH TOWEL

36" x 60" \$20 ea.

HATS

Baseball caps \$8 ea.



Visors \$4 ea.

CHILDREN'S WEAR

Short Sleeve T-Shirts \$6 ea. S-L
 Jogger's Set \$20 ea. S-L
 Boy's Swim Shorts (up to 7/8) \$13 ea.
 Neon Shorts \$18 ea. S-L
 Infant Romper \$8.50 ea.
 Infant Polo Shirt \$6.75 ea.
 Infant Tank \$4 ea.



MISC.

Club Burgee \$20
 Water Bottles \$5
 Kamaaina Cooler \$5.25
 OCC Logo Charm, 14 kt. gold
 Large \$120 Small \$165

ORDERS MUST BE RECEIVED BY DECEMBER 1 FOR CHRISTMAS DELIVERY.

ITEM	SIZE	COLOR	QTY	UNIT PRICE	TOTAL
SUB TOTAL					
HANDLING & POSTAGE (2.50 PER ITEM)					
TOTAL					

SIGNATURE _____

NAME _____ MEMBERSHIP NO. _____

MAILING ADDRESS _____

CITY _____ STATE _____ ZIP _____

MAIL TO: _____

PLEASE PRINT CLEARLY

Help Needed for the Marathon Aid Station

Set your alarm extra early on Sunday, December 9, so you can get up and help at the OCC Aid Station for the Honolulu Marathon. Our Aid Station is located on Kahala Avenue at Hunakai Street. This is the 16th year we've sponsored an Aid Station for the marathon, which draws nearly 10,000 competitors each year for the 26 mile, 385 yard event. Our Club is the last of the original aid stations organized for the 1975 Marathon.

Last year only about 80 volunteers showed up and we need more than 125 volunteers to pass out cold sponges and drinks to runners.

We need you at the Aid Station by 5:30 a.m. to help set up (the race starts at 5:30 a.m. and the first runners get to us about 6 a.m.) and you'll be finished around 11 a.m. when the final runner has passed the Aid Station on his/her return to the finish line at Kapiolani Park.

Refreshments will be served and Marathon T-Shirts will be given to all Aid Station Volunteers.

Salad Bar Now Available for Waikiki Lunch

Probably one of the best environments for lunch on Oahu seems not to be fully appreciated. For those members not taking advantage of this opportunity, re-discover lunch at the Club.

Certainly many in the business community have probably let distance and time displace the Club for their lunchtime activities, yet the ease of parking, change in scenery and overall quality are worth the commute.

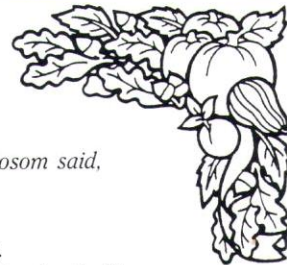
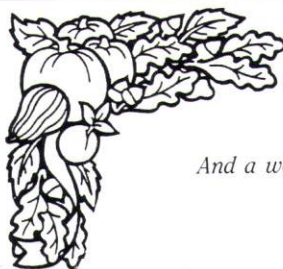
For those in a hurry, the menu features several wikipiki items and now, there is the new noontime salad bar. Assorted salads, fresh fruits, a choice of dressings, fresh breads, assorted cold cuts and soups are also included.

The Club management and staff are eager to provide for your luncheon pleasure and hope to see you at lunch soon. ☺

Sign up now at the Front Desk. Be sure to list your phone number. You'll work hard but you'll have a lot of fun, too. Friends of members are welcome too.

All Junior 'Riggers are encouraged to help at the Aid Station.

If you have questions, contact Cline Mann. ☺



*And a woman who has a babe against her bosom said,
Speak to us of Children.*

And He said:

Your children are not your children.

They are the sons and daughters of Life's longing for itself

They come through you but not from you,

And though they are with you yet they belong not to you.

You may give them your love but not your thoughts,

For they have their own thoughts.

You may house their bodies but not their souls,

For their souls dwell in the house of tomorrow,

Which you cannot visit, not even in your dreams.

You may strive to be like them, but seek not to make them like you.

For life goes not backwards nor tarries with yesterday.

You are the bows from which your children as living arrows are sent forth

The archer sees the mark upon the path of the infinite,

And He bends you with His might that His arrows may go swift and far

Let your bending in the Archer's hand be for gladness;

*For even as He loves the arrow that flies, so He loves also the bow
that is stable.*

Kahil Gibran

A Thanksgiving message brought to you by

WINNERS' CAMP FOUNDATION

Making a Difference in Young Peoples Lives

CALL (808) 735-5660

WINNERS'
Camp

A Non-Profit Educational Foundation



Princess Kaiulani

*Island
Elegance*



1222 Kaunualii St., Ph. 847-4806
Monday to Saturday 9-5

BUZZ'S
Original Steak House
MOILILI

**New
Happy
Hour**

Monday through Friday
5 to 7

Across from the Varsity Theater
Phone: 944-9781

Your Realtors for
The Best in
Real Estate
Counseling and
Sales are Only
a Beachtowel
Away



Joan Farrell (RA)



Susan Thacker (R)

Bradley
PROPERTIES LTD

Tel: (808) 523-0456 • Fax: (808) 536-2844

COLONY HOTELS & RESORTS

Attention Visitors

*(Special rates and... we're steps from
the Outrigger Canoe Club.)*

Make your reservations at the
Diamond Head Beach Hotel. You will
enjoy deluxe accommodations,
complimentary Continental breakfast
and many other free services.

Rates Start From

\$89

Double Occupancy
Show this Ad for Your OCC
Member and Guest Special Rate

**DIAMOND HEAD
BEACH HOTEL**

2947 Kalakaua Avenue
Waikiki, Hawaii 96815

For Reservations call (808) 523-0411
(808) 922-1928 or toll free (800) 367-6046

SPECIAL RATES ALSO AT
COLONY HOTELS & RESORTS
MAUI · KONA · KAUAI · MOLOKAI

Rates valid through 12/21/90.

**For
a great
oil change,
don't come
to us.**

At Mobile Lube Express,
we come to you instead.

Our 14-point lube service
includes oil & filter change
with Pennzoil motor oil,
topping off all fluids, and a
chassis lube. Best of all, we
do it at your home or office.

To make an appointment,
just call 262-8000.

Special introductory offer \$29.95.

regularly \$34.95 Offer expires December 31, 1990.

Mobile Lube Express

The Oil/Lube that comes to you.



DISTINCTIVE

The koa immigrant's trunk. From our Heritage
Collection, the design is based on those that
carried the belongings of Hawaii's first
immigrants from China and Japan in
the 1800's. Handcrafted, of course.

Martin & MacArthur

Davies Pacific Center • 841 Bishop Street
Open Mon.-Fri. 8:30 a.m. to 5:00 p.m.

November/December 1990 Calendar

Sunday	Monday	Tuesday	Wednesday	Thursday	Friday	Saturday
				1 Historical Comm. Mtg. 5 p.m.	2 Water Aerobics 8 a.m.	3 DUKE HEATHERLY ORCHESTRA 7-10 p.m.
DEADLINE TO ORDER ODKF CHRISTMAS TREES - NOVEMBER 1					SEAFOOD BUFFET 6-9 p.m.	
4 Sunday Brunch 8:30 a.m.	5 Aerobics 8 a.m.	6 B&G Comm. Mtg. 11:30 a.m.	7 Aerobics 8 a.m.	8 ODKF Board. 11:30 a.m.	9 Water Aerobics 8 a.m.	10 DUKE HEATHERLY ORCHESTRA 7-10 p.m.
Sunday Buffet 6-9 p.m.	Bridge Noon	A&M Comm. Mtg. 5 p.m.	Entertainment Comm. Mtg. 5:30 p.m.		House Comm. Mtg. 11:30 a.m.	
	Monday Night Football Party 6 p.m. Bar	DON'T FORGET TO VOTE!				
11 Sunday Brunch 8:30 a.m.	12 Aerobics 8 a.m.	13 PR Comm. Mtg. 5:30 p.m.	14 Aerobics 8 a.m.	15 Exec. Comm. 5:30 p.m.	16 Water Aerobics 8 a.m.	17 DUKE HEATHERLY ORCHESTRA 7-10 p.m.
Sunday Buffet 6-9 p.m.	Bridge Noon					
	Monday Night Football Party 6 p.m. Bar					
18 Sunday Brunch 8:30 a.m.	19 Aerobics 8 a.m.	20 A&M Comm. Mtg. 5 p.m.	21 Aerobics 8 a.m.	22 THANKSGIVING Dinner 4:30-8:30 p.m.	23 Water Aerobics 8 a.m.	24 DUKE HEATHERLY ORCHESTRA 7-10 p.m.
Sunday Buffet 6-9 p.m.	Bridge Noon		Long Range Planning Mtg. 5:30 p.m.			STEAK FRY 6-9 p.m.
	Monday Night Football Party 6 p.m. Bar					PHOTO CONTEST DEADLINE
25 Sunday Brunch 8:30 a.m.	26 Aerobics 8 a.m.	27	28 Aerobics 8 a.m.	29 Board Meeting 5 p.m.	30 Water Aerobics 8 a.m.	1 DUKE HEATHERLY ORCHESTRA 7-10 p.m.
Sunday Buffet 6-9 p.m.	Bridge Noon					
CASTLE SWIM 8 a.m.	Monday Night Football Party 6 p.m. Bar					

November Beach Shop Special

Close Out on all nylon OCC Running Tops
Regular \$14.25 Now \$7.00

While Supply Lasts
Colors vary by size, XS, S, M, L, XL

Open Daily 10 a.m. to 5 p.m.

OCC PHOTO CONTEST

There's still time to enter your favorite photos in the OCC Photo Contest.

Categories

- OCC (black & white or color)
- Flowers, Plants, Scenics
- Funky/Humorous
- People
- Places
- Things
- Creatures

Deadline

Saturday, November 24, 5:30 p.m.

Prizes

First prize in each category, \$50 Club credit
Award ribbons to first, second and third places

Rules and Entry Blanks are at the Front Desk

On the Cover: Lunch at the Outrigger is always a treat and the new lunchtime Soup and Salad Bar is a great way to have lunch in the Dining Room or Hau Terrace and still make that one o'clock meeting. Photo by Marilyn Kali.

the Outrigger

Published monthly by the
Outrigger Canoe Club

2909 Kalakaua Avenue at Diamond Head
Honolulu, Hawaii 96815
Phone: 923-1585, 921-1485
Dining Room: 921-1444
FAX: 921-1414

Directors

Harwood D. Williamson, *President*
John Goss, *Vice -President, Operations*
James Peterson, *Vice -President, Activities*
Diane Stowell, *Secretary*
George Cook, *Treasurer*
Kenneth Brown, *Admissions & Membership*
Walter Guild, *Athletics*
Charles O. Swanson, *Building & Grounds*
Scrappy Lipton, *Entertainment*
Bruce Ames, *Historical*
William Baird, *House*
Ronald Larsen, *Long Range Planning*
Geraldine DeBenedetti, *Public Relations*

Standing Committees

Jim McMahon, *Admissions & Membership*
Bill Bright, *Athletics*
Joyce Timpson, *Building & Grounds*
Mahi Riley, *Entertainment*
Kehau Kea, *Historical*
Bill Wilson, *House*
Jason Oliver, *Long Range Planning*
Kimbal Thompson, *Public Relations*

Management Staff

Raymond P. Ludwig, *General Manager*
Gordon Smith, *Comptroller/Assistant Manager Days*
Ted Nicolaou, *Assistant Manager Nights/Operations Manager*
William Teruya, *Executive Chef*
Patti Higuchi, *Executive Secretary*
Rosemarie Morris, *Secretary*

Outrigger Staff

Marilyn Kali, *Editor*
Arden Moore, *Advertising*

The Outrigger Canoe Club
2909 Kalakaua Avenue
Honolulu, Hawaii 96815

Bulk Rate
US Postage
Paid
Permit No. 174
Honolulu, Hawaii