

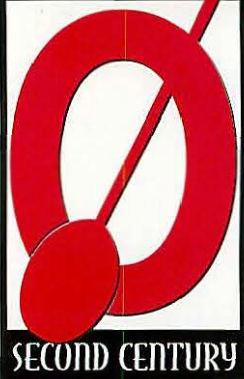
# the Outrigger



JANUARY 2004

Published by the Outrigger Canoe Club for Members and Guests at Home and Abroad





# Honoring our past... Building our future.

by Jon Bryan

## OCC2C - WHAT'S HAPPENED SO FAR

Last summer the OCC2C Committee presented its plan to the membership for study and consideration. Many members were pleased with the design and eager to go forward. Many others raised concerns and made thoughtful suggestions.

Over the last few months the OCC2C Committee and the architects have been reviewing member suggestions and are trying to incorporate as many as possible into the plan members will vote on in the referendum.

## MEMBERS COMMENTS AND CONCERNS

The two issues that prompted the most discussion are:

- timing of the project and,
- location of the proposed fitness center.

Timing is not an issue on the referendum. The location of the fitness center is.

The design the committee presented this summer (SK-6) features the fitness center over the bar. The committee and the architects chose this site because it is the most feasible above ground location where a adequately sized fitness center can be built in compliance with zoning and other construction codes and in a style the committee believes is consistent with the original design of the Club.

The committee recognized the fact that demolishing and rebuilding the bar in order to build the fitness center above would be more expensive, however, they believed it was worth the investment in order to preserve the design and provide the much needed fitness facility.

Most members who object to the fitness center over the bar, including the Club's Architectural Review Committee (ARC), object to it from a design standpoint. They believe the bar is the architectural and social focal point of the Club and that the plans to recreate it will not succeed.

A Club member and architect who worked closely with the original architect, Val Ossipoff, suggested constructing the fitness center underground on the Kalakaua Avenue side of the property.

Although the OCC2C Committee had earlier considered and rejected a plan to put the fitness center where the Board Room is now and extending out into the existing garden area, it never considered going so deep or so far out. Recognizing that there is strong member support for an underground fitness center, including support from the Architectural Review Committee (ARC), the

OCC2C Committee decided to develop an alternate plan and give members another choice on the referendum.

## THE ALTERNATE PLAN (SK-7)

**Drawings of the alternate plan will be displayed in the lobby and discussed at a member forum on Tuesday, January 13 at 7:00 PM in the Koa Lanai.** This plan is essentially the same as the original plan except:

- The bar will remain exactly as it is today.
- The fitness center will be underground and accessible from the locker rooms through the lower level of the parking garage.
- The fitness center will be larger providing more space for cardio, stretching, floor exercise and free weights (3200 square feet versus 2800 square feet in the original plan).
- The current board room window will be replaced with a coral rock wall treated to match the existing wall with a glass block skylight above.
- There will be glass blocks imbedded near the drop-off trellis at the entry cul de sac to provide natural light to the fitness center.

## LOBBY CHANGES

Based on suggestions from members, the lobby design has been slightly modified on both plans so that the reception desk will face the front entrance.

## LANDSCAPING

Landscape designs for both plans have been developed by Walters, Kimura and Motoda. The key elements of the existing landscaping such as the kamani tree, the trellis at the entry, and the plumerias leading to the lobby will remain with the original and the alternate plan. Plant material that is already used at the Club such as red ginger, bromeliads and ti will be reintroduced. A raised garden adjacent to the lobby and above the new administrative offices will be part of both plans. At the suggestion of a member, tree wells will be used in lieu of the recessed space that was originally planned to allow trees to rise from the basement.

## CONSTRUCTION TIME

- The original plan (SK-6) will take approximately 9 months to construct.
- The alternate plan (SK-7) will take 8 months to construct.

## DISRUPTION

- In the original plan (SK-6), the Ka Mo'i Lounge will be closed throughout construction. Access to the Koa Lanai, Hau Terrace and Snack Shop will be via "detoured" routes.
- During construction of the alternate plan (SK-7), cars will enter and exit the parking garage via a single lane. There will be some "detours" around the front entry and the lobby. However, there will be no construction beyond the lobby, so the operation of the Ka Mo'i Lounge, Koa Lanai, Hau Terrace and Snack Shop will not be affected in any way.

## COST

- The biggest cost of the original plan (SK-6) is demolition of the bar and rebuilding it with all the details and finishes needed to recreate the Ossipoff design.
- The major expense in the alternate plan (SK-7) is de-watering the area where the fitness center will be built and preparing the foundation for construction.
- A comparison of the cost estimates of both plans will be explained at the member forum on Tuesday, January 13.
- It is estimated that the cost of the alternate plan (SK-7) will be approximately \$714,000 less than the original plan (SK-6).
- It is expected there will be much less impact on operating revenue with SK-7 because of the minimal impact on food and beverage operations.

## REFERENDUM VOTE

The referendum ballot will be included in the same packet as the Notice of the Annual Meeting and the ballot for the election of candidates for the Board of Directors. Deadline for voting on the referendum is the same as voting for the Board of Directors, 6:00 PM on Sunday, February 22, 2004.

**There has been a widespread misunderstanding that a vote in favor of OCC2C means that the construction project will begin immediately. That is not the case. A vote for OCC2C means you approve of the design and wish to see it constructed when the Board of Directors has determined it is most prudent.**

As stated on the referendum, the Board will take into consideration the timing, cost and impact of the construction on the Club; the impact of the construction on the Elks lease rental negotiation; and any and all other matters that may arise in the course of construction.

Please look at the display of the alternate plan in the lobby and be sure to vote on the referendum.

*Aloha and Mahalo.*







# GREAT FUN HAD AT BEATLEmania, Magical Mystery Tour

By Patty Mowat

On November 22 the lucky hundred or so members and guests who rocked the Club to the sounds of Hawaii's very own all Beatles band, Rubber Soul, found their groove.

Approximately 100 hardcore Beatle fans came from near and far to indulge in the fabulous heavy pupu and to move and grove to the fast paced exciting Beatle sounds of the talented foursome. It was fantastic to see young and old enjoying themselves on the dance floor.

The common denominator: having a great time together. It was amazing how our memories were turned back to the 60s era without missing a beat, everyone singing and dancing to the words of their favorite Beatle's songs. It doesn't get any better then that!



Bill and Patty Mowat



Maile and Doug Ostrem



Sarah Rosa, Keala Kilcoyne and Missy Mowat



John Douglas, Bob and Joanne Allin, Dave Kennelly, Pat Fujere and Christina Douglas



Roger Cundall and friend

Members danced to Beatles music by the band Rubber Soul



**SANDSEA, INC.**  
25 Years of Experience in Hawaii

Property Management

Long Term  
and  
Vacation Rentals

A family business  
providing  
personalized  
attention in  
safeguarding your  
property and  
seeking the  
maximum return on  
your investment.

Lannette Sandvold  
(808)637-2568  
hawaii@sandsea.com  
www.sandsea.com



Sara Shaw, Graham Farrar, Andy Shaw and Wakey Mist sailed from the Fiji Islands to Opua, New Zealand aboard *Pau Hana* where they met up with John and Nancy Shaw for a three week sail in the Bay of Islands. One day out of Fiji, Andy scored a 40 pound mahimahi! John and Wakey filleted it, Sara breaded and fried it into some delicious sandwiches, and they ate it. Ono.

On October 7, Neal and Ruby Ifversen headed for the Mainland, but Neal went directly to Portland to be with son Tommy's family, while Ruby went to New York City for the annual convention of former Pan Am flight attendants. She then joined Neal in Portland where they spent 10 wonderful days getting to know their granddaughter, Kate, whose first birthday was September 2.

Neal celebrated his 91st birthday while there on October 19. They also visited good friends Waldo and Yvonne Bowman who now make their home in a beautiful senior residence overlooking the Willamette River. Yvonne suffered a stroke last year but is doing well. They send their Aloha to old Outrigger friends.

Dr. George Boswell, his wife Veta, and their three daughters and their families, enjoyed Sunday Brunch on November 30 at the Club, as the highlight of their family cruise aboard

# As the Terrace Turns

the *Norwegian Star*. George was eager to introduce his family to the Club which he enjoyed often during the summer while filming a documentary about the virtual elimination of the paralyzing disease, poliomyelitis, a medical success story in which he played a vital part.

Nora Meijide hosted an Argentinian dinner at the Club on October 27 for the Kauai Oahu chapter of the Chaine de Rotisseurs. Executive Chef Manfred Pirscher and Sous Chef Arnaud Jager presented a magnificent array of an authentic Argentine delicatessen. The wait staff dressed in typical Gaucho attire to compliment the setting. Tango music was played for dancing.

Jeff Stevens and Hilary Mulligan were married June 21 in Placerville, California. David Stackhouse was a member of the wedding party. "We were fortunate to have so many wonderful family and friends visit from Hawaii," Hilary said.

Contributions to this column are always welcome. Leave items for the Editor at the Front Desk, email to [occmag@aol.com](mailto:occmag@aol.com) or fax to (808) 833-1591. Be sure to include your name and phone number in case additional information is needed. Items received by January 25 will appear in the March issue of the magazine. Items received after January 25 will appear in the April issue.



Yvonne and Waldo Bowman, and Neal and Ruby Ifversen visit in Oregon.



Kate Ifversen, 13 months, helps her grandfather Neal Ifversen celebrate his 91st birthday.



Inspirational speakers Susan Page and Jerry Coffee, right, met with Ford and Mary Ellen King, left, at the Tri Delta breakfast.



OCC members who attended the Argentinian dinner included, from left, Chef Manfred Pirscher, Corin Balding, Diana Nicholson, Sous Chef Arnaud Jager, Rey Cueco, Nora Meijide, Bruce Libert, Be Huynh, Rick Fried, Judith Kellogg, Luck Katasila and Tim Guard.



William (Wink) Arnott and Carol Greene were married Sept 20 on the Koa Lanai. From left are Wink, Marion Arnott, and Carol and her parents, Katherine and Ed Brown. They spent their honeymoon in Costa Rica.



Newlyweds Hilary and Jeff Stevens



David Stackhouse, Jeff Stevens, Bill Stevens and Jeff Baurenburg were in the wedding party for Jeff Stevens' wedding.



## Swimming

Auau Channel Solo Crossing  
9 miles (Mala Wharf, Lahaina,  
Maui to Kaa, Lanai)  
Saturday October 11, 2003  
John D. Nielsen, 8 hours 35 minutes

## Triathlon

AARP Triathlon  
Jan Newhart, 1st, 75-79, 1:49:36

Val Nolasco Half Marathon

11/10/2003  
David Stackhouse, 1st, 30-34, 1:25:23

## Swimming

YMCA Turkey Swim 2K  
11/23/2003  
Kristi Torkildson, 2nd, Open  
Women, :27:59  
Alex Jampel, 5th, M40-44, :30:39  
Steve Torkildson, :33:24  
Bonnie Eyre, 1st, 65+, :45.3



**SHIBORI COLLECTION**  
one-of-a-kind  
Hand-Dyed Silk  
Dresses and  
Brumese Jade  
Jewelry by  
Local Designers,  
Antique and  
Gift Items

Shibori Collection • Ward Centre • 589-1077

# ClubCaptain'sReport

By George Wessberg

## Long Range Plan

Club Captain George Wessberg and Coordinating Director Tom McTigue met with members of the LRP Committee to discuss a new "metric system" for measuring the specific parameters of the athletic programs. Athletic subcommittee chairs met on November 4 to discuss appropriate "metrics" for the Athletic Committee. The intent of this process is to improve the quality of the athletic programs and assess the allocation of subcommittee budgets.

## Canoe Racing

Two open women's crews were entered in the Na Wahine O Ke Kai and finished very competitively in second and eighth places in fiberglass canoes. This is the first year in a three-year program proposed by head coach John Puakea. Two open men's crews were entered in the Molokai Hoe and finished competitively in fourth and 38th places. This is the second year of a three to five year program for head coach Kala Judd.

## Surfing

Surfing Committee and Entertainment Committee Chairs, Terri Needels and Missy Mowat, with assistance from Coordinating Director Vik Watumull, hosted a Family BBQ and screening of the Rell Sunn documentary on October 4. This was a unique event and was greatly appreciated by the members in attendance.

## Softball

The Softball Committee will not field a team during next season due to the inability to find new volunteers to organize and perpetuate the program. Bill Kilcoyne and Jim Gaddis resigned after many years of serving as co-chairs of the softball program.

## Beach & Water Safety

Chair Rick Hobson and Director of Beach Services Don Isaacs continue to support the popular Sunday canoe rides for members and guests. They are planning to repeat the Summer Canoe Steering Clinics by Aka Hemmings and add a Junior Water Safety program and possibly canoe sailing clinics next summer.

This subcommittee has updated the Beach Rules originally developed by Kawika Grant and Norm Dunmire and also provides support to Canoe Racing, Surfing, Swimming, and Paddleboard subcommittees when OCC hosts water sport events.

## Off-Season Paddling Practice

Kisi Haine will supervise off-season outrigger paddling practices for Open and Masters Women from the Ala Wai Canal site. Members who are interested may contact Kisi at 227-5474 for additional information.

## 2003 Athletic Committee

Kisi Haine and George Wessberg thank the following subcommittee chairs for their time and dedication. Their efforts enabled several hundred members to share many wonderful and rewarding athletic experiences during this season.

- Canoe Racing  
Courtney Seto
- Golf  
Phil Sevier
- OC1/Kayak  
Sue Brown
- Paddleboard  
Eric Rhodes
- Running  
Katy Bourne
- Softball  
Jim Gaddis
- Surfing  
Terri Needels
- Swimming  
Arnold Lum &  
Dennis Blake
- Volleyball  
Peter Ehrman
- B & W Safety  
Rick Hobson
- Fitness Center  
Phil Whitney

# Athletic Calendar

## January

- 4 Canoe Rides\*
- 4 Kanaka Ikaika Surfski &  
OC1 Race, Kailua, Flat,  
Molulea, Kailua
- 11 Canoe Rides\*
- 11 Kanaka Ikaika Surfski &  
OC1 Race, Makai Pier  
to Kailua
- 18 Canoe Rides\*
- 18 Kanaka Ikaika Surfski &

- OC1 Race, Makai Pier to  
Hawaii Kai
- 18 Magic Island Biathlon
- 25 Canoe Rides\*
- 31 Kanaka Ikaika Surfski &  
OC1 Race, Hawaii Kai to  
Kaimana Beach

## February

- 1 Canoe Rides\*
- 8 Canoe Rides\*
- 14 Valentine Biathlon

- 15 Canoe Rides\*
- 15 Kanaka Ikaika Surfski &  
OC1 Race, Kailua to Kualoa
- 16 Great Aloha Run
- 22 Canoe Rides\*
- 28-29 Oahu Perimeter Relay
- 29 Oahu Perimeter Run
- 29 Canoe Rides\*
- 29 Kanaka Ikaika Surfski &  
OC1 Race, Hawaii Kai to \  
Magic Island

\*Canoe Rides weather permitting

January 2004 - Outrigger



# SNOW IN HAWAII?



By Terri Needels

It may be hard to believe, but it is absolutely true! Snow is showing up at the top of every local long board amateur and pro-am surfing meet in Hawaii—Ned Snow, to be precise.

You may be wondering why you haven't noticed Snow at the Outrigger Canoe Club in the past. There is a good reason—Ned and his family recently moved to Oahu from the Big Island. They previously lived in Puako, north of Kona, until they moved to the Diamond Head area about two years ago.

Ned is 18 years old and is a senior at the Academy of the Pacific. His favorite south shore (Oahu) surfing spot—and home break—is Cliffs. On the north shore, his favorite spot is Gas Chambers. Back on the Big Island, his favorite spot is Waipio Valley.

Ned was about nine years old when he taught himself to surf. His skills have evolved exponentially to the point he has become the guy to beat in all the long board competitions.

His recent wins include earning first place in the Open Men's Long board and Men's Long board division of the HASA meet at Sandy Beach, and second place in the Open Men's Long board division of the NSSA event on the Big Island in October. He recently won second place in the Macy/Hurley E-Series pro-am contest, against all of the big name professional long boarders.

Ned plans to continue to surf competitively in the amateur divisions of HASA, NSSA, and the Hawaii pro-am contests this year and to graduate from high school. His future goals involve competing in the long board professional circuit in Hawaii and on the mainland and attending college in Hawaii.

While various surfboard and sports gear companies sponsor him, Ned made it clear that his best sponsor is his mother. That really demonstrates that he isn't caught up in the glamour and hype of commercialized surfing but is instead a person of solid character. He is just the kind of surfer we are thrilled to welcome to the OCC surfing team.

**Keep looking for Snow—you won't be disappointed.**

## OCC Surf Team Results

As usual, the OCC surfers continue to dominate in the state's amateur and pro-am surfing contests. Listed below are the most recent wins achieved by team riders.

### Hawaii Amateur Surfing Association Series

October 8 & 9, Sandy Beach

Ned Snow, 1st, Men's Longboard & Open Men's Longboard

### National Scholastic Surfing Association Series

October 24 & 25, Big Island

Johann Hedemann, 7th, Explorer Menehune Division

Amy Lawson, 4th, Explorer Women Division & 7th, Open Women Division

Carissa Moore, 2nd, Explorer Women Division & Open Boys Division; 5th, Open Menehune Division; 7th, Open Women Division

Ned Snow, 2nd, Open Men Longboard

Outrigger Canoe Club

## Manoa Valley Salon & Spa

(an Aveda Lifestyle Spa)

In the comfort of Manoa Valley lies a spa that relaxes the soul and refreshes the mind

We are a full service Aveda Lifestyle Salon and Spa  
2801 East Manoa Road, Honolulu, HI 96822

**Tel (808) 988-0101 – Fax (808) 988-0111**

Come escape the stresses of everyday life in comforting Manoa Valley. Enjoy our signature treatment, the Ka Wai Lani (Heavenly Waters) – a 50-minute relaxation treatment incorporating exfoliation, hydration and massage under a warm Vichy shower utilizing two massage therapies. It is truly Heavenly!

**10% discount for OCC members\***

\*please mention you are an OCC member at time of booking.

**AVEDA**

the art and science of pure flower and plant essences



# CASTLE SWIM HAS FIRST WOMAN WINNER

By Ray Robinson

Thirteen year-old Kristi Torkildson, a Punahou student, became the first woman to win the Club's traditional Castle Swim on the Sunday after Thanksgiving, November 30. She and Bob Monsen were in an exciting head-to-head race most of the 1.2 mile course, and Kristi finished only seconds before Bob in 36 minutes and 51 seconds. Bob's time was :37:02.

Jimmy Austin was third in :39:08.

As OCC swimmers arrived on the Hau Terrace for check-in, "How's the water?" was the most frequently heard question. It was followed by, "And we don't mean is the water cold or warm, or is it smooth or choppy, we mean WHAT WAY IS THE CURRENT RUNNING?"

That's the determining factor, of course, in whether the swim will be hard or easy.

The normal interest is heightened by the memories of the very recent Roughwater Swim in which the current running from Waikiki to Diamond Head was so strong that dozens of swimmers wound up hanging on to the marker buoys for dear life. Hundreds had to be rescued and only a third of the swimmers finished.

The Castle Swim, which is for members only, began in the 1920s. It was originally open to the public and the course was from the site of the old OCC, where the Outrigger Waikiki Hotel now stands, to the steps of the new Club at Diamond Head. It bears the name of Harold Castle whose home was on the site of the Elks Club.

Dennis Blake, Swim Committee chair, who has conducted a thousand swim meets in the last 20 years, avows the parallel current runs Ewa to Diamond Head 85 percent of the time. However, another very well known and highly respected waterman (a fisherman) states his conviction that when the tide is rising, the flow is from Diamond Head to Waikiki, and when the tide is falling, the flow is from Waikiki to Diamond Head.



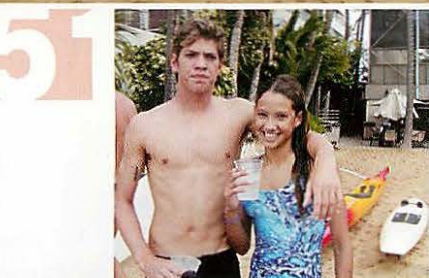
The top three finishers were Jimmy Austin, 3rd; Kristi Torkildson, 1st, and Bob Monsen, 2nd.



Swimmers gather at the Club for the start of the Castle Swim.

## Castle Swim Results • November 30, 2003

Overall	Name	Time	Place/Division
1.	Kristi Torkildson	:36:51	1st, Overall
2.	Bob Monsen	:37:02	1st, M55
3.	Jimmy Austin	:39:08	1st, M20
4.	Ernie Leskovitz	:40:20	1st, M65
5.	Mikey Cote	:40:35	1st, Jr Boy
6.	Roger Cundall	:41:16	1st, M50
7.	Rachel Cote	:41:29	1st, Jr Girl
8.	David Stackhouse	:41:54	1st, M30
9.	Mike Kane	:42:00	
10.	Harrison Ishida Jr	:43:23	
11.	Marc Haine	:45:47	1st, M40
12.	Twain Newhart	:46:14	
13.	Taizo Braden	:50:14	
14.	Karl Heyer IV	:50:19	1st, M45
15.	Susan Brown	:50:34	
16.	Randy Carlson	:50:35	
17.	Chris Worrall	:50:51	
18.	Kimo Austin	:51:41	
19.	Sue Steinemann	:52:03	1st, W40
20.	Mark Jackola	:59:22	
21.	Jim Anderson	:59:27	
22.	Kari Vasey	1:00:48	1st, W45
23.	Vic Hemmy Jr	1:02:10	
24.	Brad Coates	1:02:10	
25.	Arnold Lum	1:03:08	
26.	Doug Kilpatrick	1:03:13	
27.	Colleen Heyer	1:03:40	1st, W35
28.	Bonnie Eyre	1:03:57	1st, W70
29.	Eric Crispin	1:05:02	
30.	Gary Sallee	1:07:08	
31.	Blake Johnson	1:08:26	
32.	Jim Zachery	1:14:18	1st, M70
33.	Ron Haworth	1:30:00	



Top: Mikey and Rachel Cote won the Jr. 'Rigger awards. Middle: Ernie Leskovitz and Roger Cundall won their divisions. Bottom: Aukina Hunt was waiting for grandfather Kimo Austin at end of race.

It's not hard to get an argument on the subject.

Fortunately, this race day morning, dawned cloudy, misty, cool and windless with the ocean flat and only a mild counter current. At the beginning, 34 swimmers hit the water shortly after 8 a.m. Kristi Torkildson was first to come up out of the water and cross the finish line.


Towards the end of the race, the wind picked up, the water got choppy (one swimmer said he drank a lot of it), and times slowed.

Father and son participants were Kimo and Jimmy Austin, and guess who finished first? Siblings Mikey and Rachel Cote won the Junior 'Rigger awards.

Taizo Braden came from behind and passed Karl Heyer IV after they were on the beach (the race finishes at the Club steps).

Thanks to all the escorts, helpers and to Beach Captain Don Isaacs for setting the course, and Swim Committee members Dennis Blake, Gerry DeBenedetti, Ginger Thornburg, Blake Johnson, Diane Stowell and Arnold Lum for making it happen.





# CARISSA MOORE COMPETES IN TRIPLE CROWN PRO EVENT

By Terri Needels

OCC surfer Carissa Moore blew away the age barriers in the surfing world when she competed in the Roxy Pro, held at Haleiwa Alii Beach in November 2003. She is the youngest surfer, male or female, to ever compete in a Triple Crown contest. Carissa was granted a sponsor's exemption into the professional contest, which featured professional women surfers from around the globe.

The event was held in stormy conditions, with 6-foot sets, many of which were closing out and coming from the side. Carissa advanced through her preliminary heat to the quarterfinals, eliminating two Australian professionals in the process (Dara Penfold and Serena Brooke).

She had exceptionally tough competition in the quarterfinal heat where she surfed against three pros ranked in the top 10 in the world. She definitely held her own and many commented that she really surfed like one of the touring pros (except she is 4' 10", 80 pounds and in the 6th grade at Punahou School!).

Although Carissa was eliminated in the quarterfinals, she demonstrated she is capable of competing with the professionals under

much-less-than-ideal conditions. Carissa tied for 13th place and won \$700 in prize money. Carissa donated her prize money to help fellow amateur competitor Bethany Hamilton who lost her arm to a shark attack on Kauai.

Proud father, OCC member Chris Moore said "all I wanted her to do was make it back to the beach safely...whatever happens from here is gravy." Numerous people have noted the similarities between golf prodigy Michelle Wie and Carissa Moore, as both have unmistakable, incredible talent; they have broken age barriers; attend Punahou School; and competed against the pros.

The similarities end there, though, as "the worst thing that can happen if you have a bad day golfing is your ball goes in the water" noted Carissa's dad. Well, Carissa not only made it back to shore safe and sound, she demonstrated she is in the same league as the professionals.

Keep an eye on this youngster, as she is bound to totally revolutionize women's surfing and move it to a new level. We are so proud of you, Carissa! CONGRATULATIONS!



## Swimming Awards

Three OCC women swimmers were honored at the Castle Swim for their swimming diligence.

Norma Santiago and Laurie Sloan were honored for swimming 250 miles, and Barbie Crandlemire received an award for swimming 100 miles.



## FAMILY BUFFET NIGHT

Monday, January 19

### Dinner Buffet

#### SALAD BAR

Selection of Garden Crisp Greens  
Cole Slaw, Seafood Salad, Wax Bean Salad with Sweet Peppers,  
Pasta Salad, Creamy Potato-Cucumber and  
Tomato and Swiss Cheese Salad with Basil

#### SOUP

Creamy Corn Chowder

#### ENTREES

Honey Stung Fried Chicken  
Western Style Beef BBQ Ribs  
Sauteed Mahi Mahi OCC  
Mashed Potatoes  
Rice Pilaf  
Green Beans with Red Bell Peppers

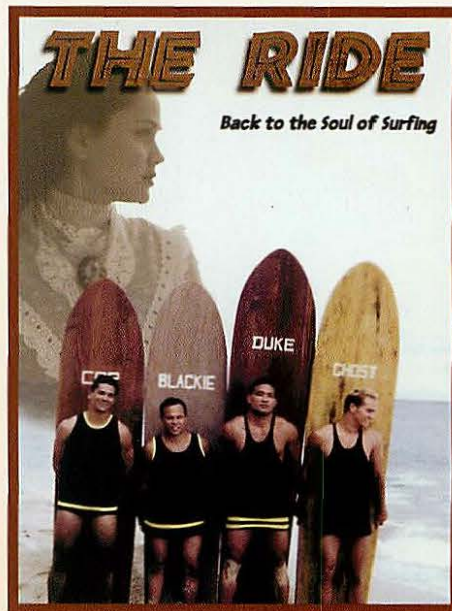
#### DESSERT

Create your own Ice Cream Sundae,  
Selection of Fruit, Cream and Custard Pies, Brownies,  
Cookies, Baklava and Almond Float

Koa Lanai and Hau Terrace, 6 - 9 p.m.

Adults - \$16.95 per person + tax + 15% service charge

Children 6 - 12 years old - \$11.20 + tax + 15% service charge



## THE RIDE Showing at the OCC February 28

Outrigger members are invited to view the movie, The Ride, during the Club BBQ on Saturday, February 28.

The film premiered at the Hawaii International Film Festival. The movie was written by Nathan Kurosawa and is about a cocky modern day pro surfer from California who comes to Hawaii to surf the XCEL Pro Contest at Sunset Beach. During the contest he nearly drowns, but gets rescued by Duke Kahanamoku and goes back in time to 1911. Spending time in the past, he experiences the true meaning of aloha.

The cast and crew are all from Hawaii. The cast includes the late Henry Ayau, OCC employee Karen Tatum, and former employee Wil Kahele.

OCC member Casey Teixeira compiled the music for the movie, and his band, Kava Music, plays the theme song. Casey and his band members will attend and sell and autograph copies of the CD for \$12. Proceeds will go to the Outrigger Duke Kahanamoku Foundation.

## huggo's

### A Big Island Tradition for Nearly 35 Years

The Big Island's premier seafood restaurant for surfside dining and dancing. On the water's edge, right next door, is Huggo's On the Rocks — the Island's favorite outdoor hot spot serving lunch, pupus and exotic beverages.

### Island Style Dining At the Water's Edge

LUNCH & DINNER DAILY:  
11:30 am - 2:30 pm  
5:30 pm - 10:00 pm

On the Rocks and  
Huggo's Lounge  
Both Open Daily  
From 11:30 am

On Kailua Bay in Kona —  
Just off Ali'i Drive  
75-5828 Keheka Rd.  
Call 329-1493

Visit us online at  
[www.huggos.com](http://www.huggos.com)



Donald T. Eovino (R)

GRI, CRB, CRS.

(808) 735-3066

[www.eovino.net](http://www.eovino.net)

\*Specialize in High End  
Residential Development/  
Partnership Management in  
Kahala and Diamond Head

#### GOLD COAST RENTAL

1 bed / 1 bath / Lanai  
Totally Remodeled  
Island Style Elegance  
Parking, w/d, Utilities  
Whirlpool

MONTHLY RENTAL  
\$2,500.00- \$3,500.00

View at website:  
[www.eovino.net/condo.htm](http://www.eovino.net/condo.htm)



# ODKF 2002-2003

OUTRIGGER DUKE KAHANAMOKU FOUNDATION

## President's Message

Serving this past year as ODKF President was made easy and enjoyable by the volunteers and enthusiastic board members who contributed so much to our programs. The momentum of the last several years made the 2002-2003 year an exceptional one in terms of financial achievements and events honoring the legacy of Duke Paoa Kahanamoku. The rest of the Board joins me in thanking all of you who

*Nicole Okuna started her first collegiate swim season by breaking her school's 100-yard butterfly record (56.4 seconds) and never looked back. Pepperdine University's Coach Rodionoff says, "She has an easygoing style that makes her a team favorite. This along with a strong work ethic is a wonderful combination."*

generously donated your time, money, and expertise; we appreciate your support.

The purpose of ODKF is "to financially support the development of individuals and organizations that perpetuate the spirit and legacy of Duke Paoa Kahanamoku." We do this by awarding grants to individuals and groups, enabling them to continue to pursue athletic excellence. Our scholarship program supports the higher education goals of Hawai'i's young athletes. Duke Kahanamoku offers a fine example for us all, not only in athletic achievement but also in leadership and living life as an example of aloha.

This year our grants and scholarship committee continued the upward trend of ODKF's awards. The Foundation approved 21 athletic grants and 39 scholarship grants for a total of \$55,130.00. We are pleased to have received applications from all over



the state from applicants of widely varying backgrounds. As awareness of ODKF and its mission grows, we hope to support a growing family of deserving athletes and scholars.

Generous contributions make our awards program possible. We reached a major milestone this year with financial and in-kind gifts bringing our assets over the \$1 million mark!

ODKF continued to reach into the

community with events like Duke's Sports and Fitness Day held in conjunction with the Boys & Girls Club. This second annual event was the most successful to date, with nearly 450 children participating. Board members, Outrigger Canoe Club volunteers and past grant winners worked with the youngsters, introducing them to the fun and variety of water sports.

The year ended on a high note with the second annual Duke Ho'olaulea coordinated in tandem with the City and County of Honolulu's Brunch on the Beach program. The three-day event featured a lei draping ceremony at Duke's statue and various ocean sports competitions throughout the weekend. Inspired last year by the unveiling of the Duke commemorative U.S. postage stamp, this year the event garnered even more enthusiasm among athletes and the general public. Waikiki's Brunch on the Beach proved an excellent forum for presenting ODKF's mission to a wider audience.

ODKF continues to build productive partnerships to reach our goals and fulfill our mission. Working with Duke's Restaurant, the City and County of Honolulu, Pictures Plus, Waikiki Community Association and many other groups plus hundreds of volunteers has been a gratifying experience that benefits all of us. With your continued support, we hope to achieve even more as ODKF moves forward.

Mahalo,

*Gretchen B. Duplanty*  
Gretchen Duplanty  
2002-03 President

*The Outrigger Duke Kahanamoku Foundation supports the Outrigger Canoe Club with grants to hold the Cline Mann Paddleboard Races and the Walter J. MacFarlane Regatta each summer.*



**BOARD OF DIRECTORS**

2003-2004

Tim Guard

—PRESIDENT

Sharon Brown

—VICE PRESIDENT

Ernest C. Moore, III

—VICE PRESIDENT

Jim Fulton

—SECRETARY

Easton Manson

—TREASURER

Gretchen Duplanty

—PAST PRESIDENT

Gloria Garvey

Fray Heath

Wilmer C. Morris

Tay Perry

Edward Richardson

Phil Sevier

Keith J. Steiner

Gregory C. Wunderlich

Foundation Administrative

Services provided by:

Projects Unlimited LLC

Mailing Address:

ODKF

P.O. Box 2498

Honolulu, Hawai'i 96804

Phone/Fax: (808) 526-4888

Website:

www.dukefoundation.org

**OUTRIGGER DUKE  
KAHANAMOKU FOUNDATION****GRANT RECIPIENTS FOR 2002-2003\*****ATHLETIC GRANTS**

Boys and Girls Club  
Hana Canoe Club  
Hawai'i All-Stars  
Hawai'i Canoe Kayak Team  
Hawaiian Island Twisters  
Keola O Ke Kai Canoe Club  
Marimed Foundation  
Na Opio Canoe Racing Association  
Outrigger Canoe Club  
Outrigger Canoe Club  
Redwings Memorial Events

**Total for Teams/Events - \$21,280**

Duke Ocean Sports & Fitness Day (Leeward Oahu)  
Racing Paddles for Keiki Division  
USA Volleyball Junior Olympics (Phoenix, AZ)  
USA National Championships (Oakland, CA)  
Region II Gymnastics Championships (Honolulu)  
Queen Lili'u'okalani Race (Kona)  
Canoe Paddling Program (Kaneohe Bay)  
Toots Mineville Invitational Race (Ke'ehi Lagoon)  
4th of July Macfarlane Regatta (Waikiki)  
Cline-Mann Paddleboard Race (Honolulu)  
Produce Handboarding DVD for Schools

**ATHLETIC GRANTS****Total for Individuals - \$6,400**

Sean Carney  
Ernest Cheung  
Mark Eckert  
Olamana Eleogram  
Dolan Eversole  
Rayfe Gaspar-Asaoka  
Jeremy Ka'aukai  
Christel Simms  
Kekoa Tapparra  
Deron Verbeck

USA Volleyball Development Camp (Long Beach, CA)  
Western Regionals-Swimming (Tempe, AZ)  
2003 Spring Championships-Swimming (Indiana Univ.)  
World Surfing Games, Durban South Africa  
International Paddleboard Championships (Australia)  
Western Regionals-Swimming (Tempe, AZ)  
Arizona Senior Fall Baseball Classic  
Western Regionals-Swimming (Tempe, AZ)  
2003 State Short Course Championships (Kona)  
Freediver Classic Open (Limassol, Cyprus)

Honolulu  
Ewa Beach  
Honolulu  
Hana  
Honolulu  
Mililani  
Papaikou  
Ewa Beach  
Mililani  
Kona

**SCHOLARSHIP GRANTS Total \$27,000****Name**

Keesha Aldridge  
Ho'okahi Alves  
Anne Antonio  
Meris Bantilan-Smith  
Charis Bauer  
Paul Brewer  
Stella Brinich  
Brienne Castillo-Huang  
Jonathan Ching  
Kekai Crabbe  
Jane-na DeMello  
Jake DeMello  
Kanani Dilcher  
Matthew Elm  
Allegra Erisman  
Amanda Fay  
Kori Haymore  
Jamie Kaio  
Chelsea Kalama  
Karlyanna Kopra  
Garrett McNulty  
Timothy Ming  
Iris Moon  
Samantha Moran  
Erin Nakamoto  
Jessica Nohara  
Nicole Okuna  
Lacey Price  
Jkae Rapozo  
Rhoney Rojas  
Thomas Sanford  
Kristin Simunovich  
Kristin Souza  
Jasmine Spencer  
Helena Suehiro  
Hongzhe Sun  
Heitiare Wallace  
Miria Whitford  
Mikela Yarawamai

**Sport**

Volleyball / Basketball  
Rowing/Football  
Paddling  
Water Polo  
Surfing / Water Polo  
Water Polo  
Swimming  
Water Polo  
Swimming / Water Polo  
Volleyball  
Paddling  
Crew  
Swim / Soccer  
Volleyball  
Triathlon  
Swimming / Water Polo  
Surfing  
Volleyball  
Crew  
Swimming  
Swimming / Water Polo  
Swimming  
Cross Country  
Swimming  
Swimming  
Swimming  
Swimming  
Paddling  
Volleyball / Surfing  
Volleyball  
Swimming  
Water Polo / Swimming  
Rowing / Paddling  
Swimming  
Swimming / Water Polo  
Swimming  
Volleyball / Paddling  
Water Polo  
Volleyball

**High School**

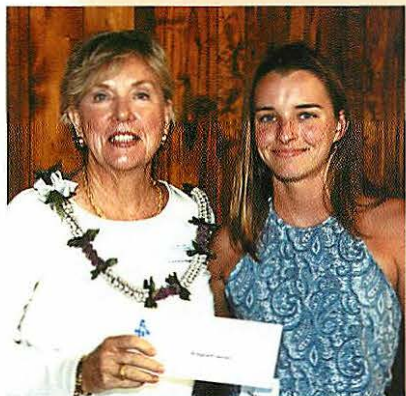
Aiea HS  
Baldwin HS  
Kaimuki HS  
Kahuku HS  
Moanalua HS  
Kahuku HS  
Radford HS  
Iolani School  
Roosevelt HS  
Kamehameha Schools  
Castle HS  
Kamehameha Schools  
Punahou School  
Kaiser HS  
Home School  
Iolani School  
Waiakea HS  
Maui HS  
Kamehameha Schools  
Hawai'i Prep Academy  
Waialua HS  
Iolani School  
Hana HS  
Waipahu HS  
Kalani HS  
Lahainaluna HS  
Waiakea HS  
Radford HS  
Redemption Academy  
University Lab School  
Hawai'i Prep Academy  
Punahou School  
Kamehameha Schools  
Campbell HS  
King Kekaulike HS  
Iolani School  
Seabury Hall  
Kahuku HS  
Hawai'i Prep Academy

**College**

CSU@ Dominguez Hills  
Santa Rosa JC  
Hawai'i Pacific University  
UC San Diego  
Azusa Pacific University  
BYU - Hawai'i  
UH - Manoa  
Loyola Marymount  
University of the Pacific  
Pepperdine University  
Chaminade University  
CA Maritime Academy  
Univ of Puget Sound  
Univ of Puget Sound  
UH - Manoa  
University of Oregon  
Olin Engineering College  
Concordia University  
Loyola Marymount  
Brown University  
Hawai'i Pacific University  
Wheaton College  
University of Victoria  
Colorado State University  
Lindenwood University  
UH - Manoa  
Pepperdine University  
UH - Hilo  
Windward CC  
Penn State University  
Dartmouth College  
Dartmouth College  
Univ of Washington  
Kaplan CC  
UH - Manoa  
Stanford University  
Chaminade University  
UH - Manoa  
Amherst College



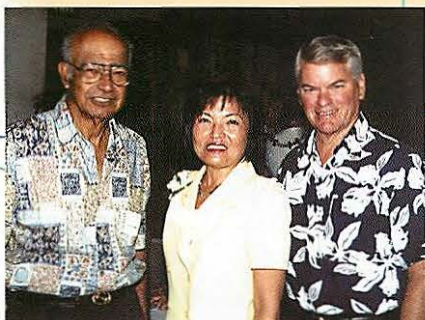
# ANNUAL MAHALO LUNCHEON



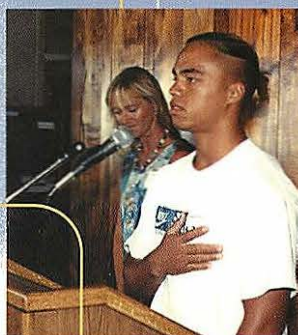
*President Gretchen Duplanty presents a scholarship award to Allegra Erisman, a student at UH-Manoa and one of Hawai'i's top triathletes.*



*ODKF Grant Recipients*



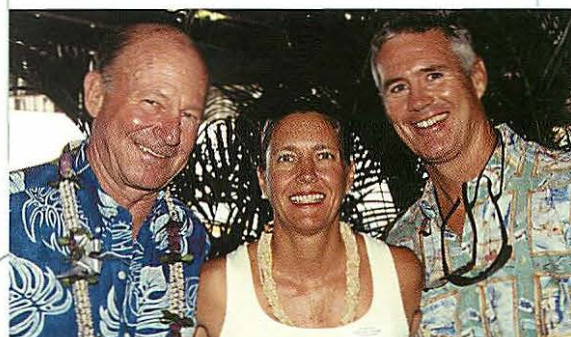
*Gulab Watumull (left), Sharon Brown and Lex Alexander, leading Honolulu business executives and stellar supporters of ODKF's mission.*



*Desmond Kapano, a paddler with Marimed Foundation's fledging canoe club, speaks from his heart and wins the hearts of many in the audience.*



*Gloria Garvey (right) presents a mahalo lei to fellow board member Mary Philpotts.*



*Emcee Tim Guard (left), ODKF director Liz Perry and OCC director Tom McTigue are all smiles as they arrive for the day's festivities.*

# E

ach year the Outrigger Duke Kahanamoku Foundation hosts a luncheon to honor its donors, grantees and volunteers. Seventy-eight guests attended this year's luncheon on July 21 at the Outrigger Canoe Club.

Special guests included Mary Philpotts McGrath, and Marilyn,

Kisi & Marc Haine. They represented families who have established Board Designated Funds within the Foundation. (See article on page 6)

Athletic grantee speakers were Connie Sizemore and Desmond Kapano for the Marimed Foundation and scholarship

grantees Matt Elm, Jane-na DeMello and Rhonee Rojas.

There was also an Olympics presentation from "Sonny" Tanabe and Mike Rothwell.

Volunteers honored at this luncheon serve the Foundation in a variety of ways. They participate on the board, work on Duke

special events, review over 150 grant applications and attack a myriad of Foundation issues and tasks with cheerful enthusiasm.

This year's major donors (Gold Medalists) were also honored at the luncheon. (See donor list on page 7.)



# ODKF COMMUNITY OUTREACH

## Duke Ocean Sports and Fitness Day

Over 450 of Hawai'i's children from the Boys and Girls Club were treated to a unique outdoor experience on April 12 at a Ko Olina lagoon. Children were introduced in rotating groups to a variety of Duke's favorite sports: canoe paddling, surfing, fishing and volleyball. Teachers and mentors were comprised of past grant winners and the wonderful volunteers from the Outrigger Canoe Club.

We received happy thanks from one young participant with this note:  
*"Thank you for letting us come to the Sports Day party. I liked playing and learning and thank you for the free donated food. Can we come see you guys again?"*

- (1) Boys & Girls Club members try their hand at canoe paddling and learn about teamwork.
- (2) Outrigger Canoe Club volunteers (in yellow) help the kids hone their volleyball setting skills.



1



2

## Second Annual Duke Ho'olaulea

ODKF board member Jim Fulton spearheaded the second annual Duke Ho'olaulea in Waikiki. Partnering with the City & County of Honolulu, Duke's Restaurants, Pictures Plus and other groups, events included a lei draping ceremony at the Duke statue, the City & County's Brunch on the Beach, and a variety of water sports competitions throughout the weekend.

- (1) Gretchen Duplanty and Pamai Tenn get ready for the lei draping ceremony.
- (2) Surfers use their long boards to present leis for the draping of Duke's statue.
- (3) Happy Birthday Duke! August 24, 2003.
- (4) Mayor Jeremy Harris and the Outrigger Canoe Club's winning entry in the 2003 Waterman Challenge.

1



2



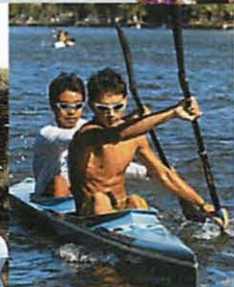
3



4



Oahu's Keola O Ke Kai compete in their very first neighbor island race, the Lili'uokalani World Championship held in Kailua-Kona.



Hawa'i'i Canoe/Kayak Team travel to Oakland, CA to compete in USA National Championships.



Hana Canoe Club, junior division, gets new wooden paddles





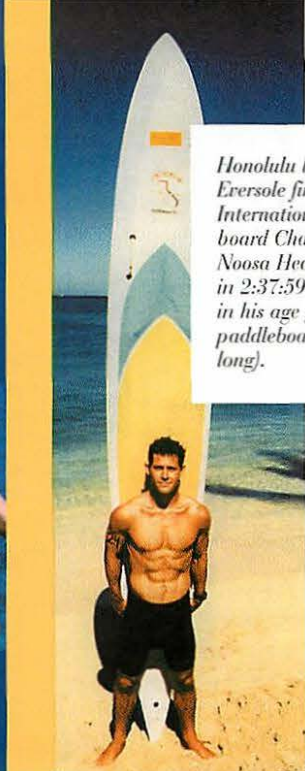
Samantha Moran trains for her first collegiate swim season. She writes, "Colorado is beautiful. I did make the swim team, my first meet is coming up, this is going to be INTENSE!"



Kristin Summorich made several personal "bests" in her first year on the Dartmouth College swim team. She also garnered academic All American recognition with a 3.44 gpa majoring in anthropology. In her spare time she founded the Dartmouth "Teach College Students to Swim Program", presented a forum on racial issues & was a keynote speaker for National Women In Sports Day.



Hawaiian Island Twisters host Gymnastics Regional Championships in Honolulu. The girls welcomed fellow gymnasts from Alaska, Idaho, Washington and Oregon with the aloha spirit.



Honolulu lifeguard Dolan Eersole finished the International Paddleboard Championships at Noosa Heads, Australia in 2:37:59 to place 3rd in his age group on stock paddleboards (12 feet long).



Kori Ann Haymore of Olin Engineering College in Massachusetts was one of two winners in a national Student Visions essay contest sponsored by the Federation of American Scientists. Her essay, "Math Animations", describes a curriculum in which animated characters teach math concepts allowing teachers more time to spend on personal student attention.



Garrett McNulty served as his HS swim team captain & was voted "most valuable" four years in a row. All this while maintaining a 4.05+ gpa in an advanced placement course curriculum. He says of his future, "I plan on becoming a swim coach. . . I wish to take a few swimmers to the top."



Started by 5 Outrigger boys with a passion for volleyball, the Hawai'i All-Stars finished their season with a tie for third in the USA Jr Olympic Championships in Phoenix, the highest finish for a Hawai'i team since 1990



Rhonnee Rojas, a walk-on to the highly touted Penn State's volleyball program, saw considerable action his first two years. Coach Parlik says, "Rhonnee is a true utility player - outside hitter, defensive specialist, libero, one of those guys if you need something, he is there." Rhonnee is pursuing a career in the health field. He serves as a student-athlete mentor to 25 fifth graders at a local school in Pennsylvania and teaches swimming to children at a Honolulu YMCA in the summer.



Christel Simms runs for the finish in the Surf & Sea Cup 1 mile swim.



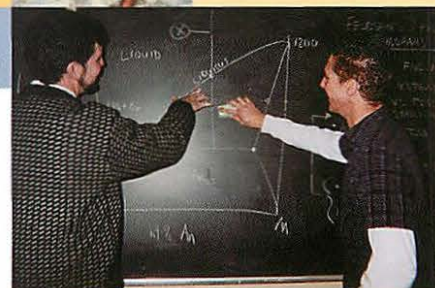
Deron Verbeck now ranks 3rd in the world of competitive free diving after his successful showing in Limassol, Cyprus. Additionally, he achieved a new US record in the Static Apnea event by holding his breath for 5 minutes and 51 seconds.



Jasmine Spencer, swim team captain in her senior year at Campbell HS, will pursue a career in neonatal nursing and physical therapy.



Tom Sanford garnered 23 victories in individual events, contributed to 7 relay victories & broke the Dartmouth's record in the 200-breast stroke (2:03:09).



Matt Elm & his University of Puget Sound professor discuss phase diagrams in geology class



# THE PURPOSE

of the Outrigger Duke Kahanamoku Foundation is to financially support the development of individuals and organizations that perpetuate the spirit and legacy of Duke Kahanamoku. • ODKF accomplishes this by encouraging athletes and scholars whose endeavors will contribute to the growth and development of athletics in Hawai'i; supporting athletic events and participation by teams and individuals in local, national and international competition; supporting individuals in furthering their education; and assisting in preserving, perpetuating and developing sports which have a special cultural or historical significance to Hawai'i.

## BOARD DESIGNATED FUNDS

### There are seven ODKF Board Designated Funds.

**Muriel Macfarlane Flanders Fund:** established by Muriel Flanders to support water sports in Hawai'i, to perpetuate the Macfarlane Fourth of July Regatta, and to honor the accomplishments of Duke Paoa Kahanamoku. Earlier this year ODKF mourned the loss of this most gracious lady. Through this Fund her legacy will surely endure.

**Terrence McCarthy Fund:** established by Terrence McCarthy in memory of her husband Edmond McCarthy, who firmly believed in the combination of athletics and education. Mrs. McCarthy honors her husband by supporting Hawai'i's top scholar athletes.

**Tom "Daddy" Haine Fund:** established in 1994, funds support the sport of volleyball in Hawai'i. Haine was the captain of the 1968

U.S. Olympic men's volleyball team. He was an 18-time USVBA All-American and in 1991 was inducted into the US Volleyball Hall of Fame. He was a member of the original Outrigger Foundation that later merged with the Duke Kahanamoku Foundation to form ODKF.

**Kala Kukea Fund:** established in 1996 and named for one of Hawai'i's top overall water sports man. Kukea touched the lives of many young athletes in his short 52 years on earth. He was an outstanding competitor, coach and role model. In 1996 he posthumously received the Hawaiian Canoe Racing Association John DeRego Perpetual trophy for service to the Association and to the Molokai-Oahu canoe race.

**Cline Mann Fund:** named for John Cline Mann, a superb water sportsman who died in 1996. He was

captain of his Dartmouth College swimming team, an avid small boat sailor, and a strong promoter of paddleboard racing. Grants from this fund help to support the annual Cline Mann Paddleboard Race. Cline Mann was also a member of the original Board of Directors of the Duke Kahanamoku Foundation (DKF) that was founded in 1963. He played an instrumental role in the merger of DKF and the Outrigger Foundation to create the present Outrigger Duke Kahanamoku Foundation (ODKF).

**Thomas Arnott Fund:** established by Marian Arnott in loving memory of her husband who was a great supporter of both OCC and ODKF. Tommy Arnott, a masterful surfer, was also recognized for competing in canoe races with Duke Kahanamoku. As teammates they beat all their competition in the early 1940's. Consequently this

fund supports interscholastic canoe paddling in Hawai'i.

**Henry Ayau Fund:** established in memory of this renowned athlete and his legacy. A "Moloka'i Boy," Henry excelled in life as a businessman, sportsman and community servant. An exceptional athlete, Henry was a noted baseball player, surfer, canoe paddler, and world-class free diver. Many viewed him as a modern day "Ambassador of Aloha." Henry's untimely death last year left us with heavy hearts. Our lives were so enriched by his smile, good nature and enduring Hawaiian spirit.

ODKF awards grants to athletes, teams, scholar-athletes and sporting events in the name of the above listed funds. We thank the families who have made these grants possible.



## GOLD MEDALISTS

The Gold Medalist program began in 1990 as a way to acknowledge those who have contributed \$1,000 or more to ODKF in a given year. We are pleased to announce there were twenty-three Gold Medalists for the 2002-2003 year. (See list on page 7.)

Gold Medalists receive a gold medal replica of Duke Kahanamoku as a token of the Foundation's appreciation. They are also honored at the Annual Mahalo Luncheon.

## OUTRIGGER DUKE KAHANAMOKU FOUNDATION LEVEL OF INCOME & GIVING

Year is from Oct-Sep	Change in Net Assets	Net Assets	Scholarships	Athletic Grants	Total Giving
1986-87	* 56,930	246,334	—	1,880	1,880
1987-88	11,808	258,142	2,000	7,068	9,068
1988-89	26,928	285,070	6,000	4,300	10,300
1989-90	74,647	359,717	10,000	10,700	20,700
1990-91	80,223	439,940	10,000	9,361	19,361
1991-92	37,488	477,428	10,000	26,500	(1)36,500
1992-93	25,191	^ 502,619	12,000	15,550	27,550
1993-94	40,549	567,263	12,000	20,500	32,500
1994-95	144,225	711,488	12,000	23,500	35,500
1995-96	5,433	706,055	18,000	31,000	(2)49,000
1996-97	49,131	755,186	18,000	18,950	36,950
1997-98	<59,355>	695,831	19,000	31,000	50,000
1998-99	65,584	761,415	16,000	25,500	41,500
1999-00	117,075	878,490	19,000	20,200	39,200
2000-01	<57,109>	821,381	17,000	(3)57,500	74,500
2001-02	506	821,887	24,000	32,085	56,085
2002-03	189,601	~1,011,488	27,000	27,680	54,680
			<b>\$232,000</b> 273 scholarships	<b>\$338,274</b> teams & individuals	<b>\$595,274</b>

\* on 12/31/86

^ prior to 93/94 investments were carried at cost.

In 93/94 changed to carrying investments at market value: beginning endowment was increased by \$24,095 to \$526,714.

~unaudited

(1) increased for 1992 Olympics

(2) increased for 1996 Olympics-includes \$10,000 from the OCC-ODKF Olympic Fund

(3) includes \$25,000 special grant to Boys and Girls Club for volleyball courts



# MAHALO TO OUR DONORS

October 1, 2002 - September 30, 2003

Donors are listed by total gifts given. Giving levels include gifts-in-kind as well as cash donations. ODKF's fiscal year is from October 1 to September 30. Gifts in honor of someone or in memoriam are indicated by a (#) after the donor's name. The names which correspond with each (#) are found in the "Gifts in Memory of" list below. Every effort was made to ensure the accuracy of the information presented here. We apologize for any errors and ask that you bring them to our attention. Thank you.

## SUPER GOLD MEDALISTS

Donors of more than \$1,000

Anonymous  
Clare Burnett Estate  
Muriel M Flanders  
Gannett Foundation  
James & Priscilla Growney  
Tim Guard  
Carol Kuhea Hauff 19  
Easton Manson 19  
Donald Monroe Sr  
Pantheon Company  
PriceWaterhouseCoopers  
Henry Stotsenberg  
Gulab & Indru Watumull

## GOLD MEDALISTS

Donors of \$1,000

Bruce S Anderson  
Wendy Crabb 165  
Dean A Eyre Jr  
Louis & Jean Gowans, Jr.  
Michael Haig 165  
Frances T Lynch 205  
Fritz & Mary Lee Duda  
Mary Philpotts  
McGrath 168, 185  
MJM Creative Solutions  
Ernest C Moore III  
Bill & Jane Morris

## SILVER MEDALISTS

Donors of \$500-\$999

Anne Anderson 81  
Lionel & Aphrodite Banks  
Zadoc W. Brown  
Benjamin Cassidy Jr 179  
Reginald & June Chambers  
Gretchen Duplanty 177  
Peggy & Art Eichorn  
Mrs. David W Hearst Sr 47  
Thomas & Lynn  
Lalakea 194, 195  
Michael & Laura Miller 191  
Jean E Rolles  
165, 182, 197  
James C Shingle  
Keith J Steiner 195  
Ruth T Tenold  
Ken Matt & Alana  
Venos 193  
Ernest & Nina Weber  
John A Zabriskie 1

## BRONZE MEDALISTS

Donors of \$100-\$499

Jeanne A Anderson 184  
Jeanne M Anderson 195  
Patricia Anderson 177

Robert Anderson Jr  
Lynn Apo 19  
Janet Atkins 68  
Annie Y W  
Au-Vermillion 195  
Nancy M Bannick 177  
Clint & Mildred Basler 109  
John Beaton 177  
Betty W Becker  
Dennis & Tina Berg 1  
William Bliss  
William & May  
Borthwick Jr  
William & Faith  
Bright 165, 127, 19  
Anita Brightman  
Sharon Brown  
Richard & Jean Callahan  
Anita Carlisle  
Paul R Cassidy 195  
Henry B Clark Jr  
Michael & Katharine  
Clifford  
Tom & Rici Conger 46  
George Correia 165  
Carolyn M Craig 21, 204  
Bob Dewitz  
JoAnne & Tom Dixon 208  
James E Dorsey 115  
Peter G Drowliner 210  
Peter & Sara Dudgeon  
Elizabeth Dunford  
Thyrza P Eyre  
Catherine Fink  
Barbara Fischlowitz-Leong  
Ada J Forbes  
Michael Fox  
Mary Jo Freshley  
Kent Giles  
Marguerite Gilpin  
John Goody  
Geoffrey Graf  
Bill & Joann Green  
Maylien W Grosjean 111  
Robert & Alice Guild  
Walter Guild  
Marilyn Van Dyke Haine  
191, 192, 197, 199,  
200, 195, 206, 207,  
210, 209  
David & Nery Heenan  
Janet M Henderson 195  
Bee McBryde Henderson  
Fay Ann Hill  
Edward Hintz 177  
Robert Hogan Jr  
Mary Ray  
Kahanamoku 198  
Gloria C Keller  
Kialoa Canoe Paddles 19  
Ralph Kiewit Jr  
Thomas King Jr  
Mrs. Robert Little  
Gilbert Livingston 126  
Elia A Long  
Paul & Cordelia  
MacLaughlin  
Robert B Maguire 1

Constance & John  
Marabella  
Robert & Jean Marchant  
Tom & David May  
Foundation  
Michael McCormack  
Dona McCormick 202  
Dean McPhail  
Franklyn & Katherine  
Meyer 78  
Dean Michaelidis 165  
Hoyt B Miles MD 196  
Donald Nicol  
Peter & Lois Nottage  
Robert & Cathy Ostrem 1  
Cynthia Pearson  
Karen Perkins 165  
Tay Perry  
Marion Philpotts-Miller  
David J Porteus 1  
William David Pratt  
Lenore Prehler 204  
Evan Rhodes 46  
Doug Rigg 1  
Robert & Nancy  
Rocheleau 19  
Thos Rohr  
Harriet Rotz 189  
Jeanne C Rubenstone MD  
1, 80  
Robert Satnick  
Jack Scaff Jr MD 165  
Michael & Vien  
Schwinn 190  
Brian Shuckburgh  
Barton Siegfried III 46  
Caro Jones Simon 181  
John and Kitty  
Simonds 164  
Roger N Smith  
Doris J Smith 36  
Sharon G Solmssen  
165, 1  
John P Spierling 103  
Ruth Taran 177  
Harriet Tegart  
Joe Teipel  
Sue & William Tetmeyer  
Richard Towill 177  
Lawrence K W  
Tseu MD 186  
Thurston & Sharon  
Twigg-Smith 195  
Floraine F Van Orden 188  
Christie Weaver 180  
Gaylord H Wilcox  
Lewis & Susan Williamson  
Col Alexander Wilson,  
USMC Ret 201  
Herbert Zukerkorn &  
Elliot Loden 195

## COMPETITORS

Donors of \$1-\$99

Pamela S Anderson 195  
Anonymous

Anonymous 11  
Anonymous  
Shay & Leona  
Auerbach 199  
Gay Austin  
Manu & Valerie Ayau 165  
Ben Baldwin  
Deborah S Bocken 179  
Charles & Carol Brede 175  
Balbi Brooks 165  
David Buck 19, 46, 165  
John Butler  
Paul R Cassidy  
Robert C Chance  
Mildred MQ Chang  
Bruce & Gabriele  
Clark 177  
Margaret Shirley Connors  
Clara Cook  
Robert Corboy 46  
Christopher &  
Paula Crabb  
Gordon H Damon  
Margaret & William  
Danford  
Geraldine DeBenedetti  
177  
Jack Diehl  
Donald F Dorward 195  
David & Hope Doyle  
Ken & Jane Drish  
Thad & Patricia Ekstrand  
Donald Eovino  
Tia Fergusson  
RADM John R Fisher  
USN Ret  
Donald Fowler 195  
Christina Foytich 179  
Marla Garmire  
Eugene & Karen Gleason  
Marjorie M Guy 178, 204  
Marie Hansen  
E Doanie Hare  
Ray Helbig 187  
Jim Hellman 1  
Fred Hemmings 145  
Harold E Henderson  
Roger Holl  
Dale Hope 46  
Ruby Iversen  
Frank G Jahrling 19  
Cathie Jardine 36  
William Johnson  
Bonnie Judd  
Kehau Kali 165  
Enid Kelly 19  
Stephen Kelly 19  
Nalani Kreutz  
Maile Kruse 177  
Lamson Lam 1, 74  
William Latchford  
Douglas & Linda LeGrande  
Christie Letman  
Daniel & Liana  
McInerney 46  
Jason McRee  
Sharon K Mowat  
Patricia Nottingham 46

Joan Osborne  
Robert & Adele  
Ostrem 197  
Charles & Gerri  
Pedesky 197  
Bob Pennington  
Joan C Pratt 195  
George Rafael  
Diane Reece  
David Rietow  
Patricia Rose  
Virginia H. Rowan  
Alan Rowan  
Randy & Aloha  
Sanborn 165  
Ramsay & Marian  
Sandelin 169, 183  
Robert & Marilyn Schank  
Ames Scott  
John Semenza  
John & Alice Serrao  
Kristine Smith  
Robin Smith 3  
James Stackhouse Jr  
Ken & Barbara Stehouwer  
Scott & Donna Sullivan 19  
Jon Sutherland  
James & Susan Thain 19  
Barbara B Tilley 177  
Beverly S K Tom  
Jack L Vaughan 138  
WO & JP Watson 195  
Cecilia Webster  
Rodney West  
Meade D Wildrick 31  
Maile Williams  
David & Mary Beth  
Williams 199  
Martha Wood  
Donald & Dorothea  
Woodrum  
Robert Jones Worrall  
Wayne & Ruby Yabiku  
Jeff Zimmerman 203

## Gifts in Memory of:

1 Thomas Haine  
3 Frank Walton  
11 Anne Durant  
Freebairn  
19 Kala Kuhea  
21 Richard G Craig  
31 Anne Wildrick  
36 Gary Vietsch  
46 John Cline Mann  
47 David Hearst Sr  
68 Susan Leonard  
74 Brad Yim  
78 Duke  
Kahanamoku  
80 Rell Sunn  
81 Marion Senger  
103 Charles J Pietsch  
109 Thomas M Arnott  
111 Robert H Grosjean  
115 Camilla Dorsey

126 Mary Lou  
Livingston  
127 John Beaumont Jr  
138 Barbara M Vaughn  
145 Fred Hemmings Sr  
164 Eva Enomoto  
Muller  
165 Henry Ayau  
168 Eugenia McMahon  
169 Sterling Pat Muller  
175 Charles A Brede Jr  
177 Aileen Riggan  
Soule  
178 Mary Stewart  
179 Suzie Cassidy  
180 Spencer F  
Weaver Jr  
181 Al Simon  
182 Rick Davis  
183 Steve Foytich  
184 William  
Holzwarth  
185 Maile Philpotts  
186 Brian Brinkopf  
187 Bill Sherry  
188 Herbert Van  
Orden  
189 Robert H Rotz  
190 Ruth Schwinn  
191 Robert Joe Muller  
192 Harvey McInerney  
193 Lucia McCallin  
Venos  
194 Gladys Brandt  
195 Muriel M. Flanders  
196 The Duke  
197 Fred Buck  
199 Tommy Thomas  
200 Jean Neal Karr  
201 CAPT Thomas  
McLaughlin  
202 Ralph McGookin  
203 Vasilios Choulos  
204 Marguerite S  
Gilpin  
205 M/M Wm F  
Thompson Jr  
206 Ed Pickering  
207 David Y  
Rochlen Sr  
209 Dick Gray  
210 Alice Cross

## Gifts in Tribute to:

198 Gertrude Parker  
208 Joan & Jack  
Anderson



## FINANCIAL REPORT

The financial statements for the ODKF as of and for the year ended September 30, 2002, were reviewed by PricewaterhouseCoopers. These financial statements are available to our members by request.

A report has been developed on the foundation's un-audited financial results for the fiscal year ending September 30, 2003. These financial statements are now being reviewed by PricewaterhouseCoopers. When that review is completed in January 2003, they will be available to members by request.

Foundation income came from donors who specify an amount be charged to their OCC account, as well as those who make cash contributions. Additional funds were raised through activities connected to the Duke Ho'olaule'a and royalty payments from TS Enterprises (Duke's Restaurant) and Malama Pono.

Scholarship grants for the year totaled \$27,000; athletic grants for the year totaled \$27,680.

If you would like additional financial information please contact any member of the Board of Directors.

	UNREVIEWED 2003	AUDIT REVIEWED FIGURES	
INCOME		2002	2001
Donations/Pledges	\$97,064	\$97,880	\$74,613
Investments	\$113,777	\$(69,888)	\$(78,313)
McFarlane Tee Shirts-net	\$5,029	\$2,687	\$4,268
Royalties	\$72,000	\$72,000	\$71,373
Duke Ho'olaulea	\$19,120	\$9,739	-
EXPENSES			
Scholarships &			
Athletic Grants	\$54,680	\$56,085	\$74,500
Admin & Fundraising	\$62,709	\$55,827	\$54,550
NET ASSETS			
AT END OF YEAR	\$1,011,488	\$821,887	\$821,381

## Applications for Athletic and Scholarship Grants

### GENERAL INFORMATION

There are two types of grants made by the Foundation. **Athletic grants** are usually for a specific purpose such as tournaments or competitions. Grants may be awarded to an individual, team or organization. Athletic grant applications are accepted at any time throughout the year. **Scholarship grants** are given to athletes in need of assistance in pursuing post high school education. Applications are accepted from January 1 to March 15 of each year.

### GRANT REQUIREMENTS:

#### **Applicant must:**

Be a resident of Hawai'i and an American citizen  
Participate in a competitive sport(s)  
Demonstrate financial need

#### **Applicant must submit:**

A completed grant application  
A personal letter of intention  
A list of competitive sports and awards  
A letter from an athletic coach or trainer

Federal tax return (or parents' if claimed as a dependent)  
A recent photo, preferably an athletic action shot

#### **In addition, Scholarship Grant applicants must:**

Plan to attend an accredited college as a full time student  
Submit a transcript of grades  
Submit two letters of reference

#### **In addition, Athletic Grant applicants or teams must:**

Describe their training program  
Describe their history of previous competitions  
Provide results of competitions with records and times  
Provide organizational and financial documentation

If you would like to receive an Athletic Grant or Scholarship Grant Application, call ODKF at (808) 526-4888 and leave your name, phone number and mailing address. Please specify which type of application you are requesting.

You may also download an application from [www.dukefoundation.org](http://www.dukefoundation.org)

## JOIN THE ODKF OHANA

The Board of Directors invites you to become a donor to the OUTRIGGER DUKE KAHANAMOKU FOUNDATION. You can help Hawaii's top athletes receive the assistance they need to reach their full potential while emulating the outstanding qualities of Duke Paoa Kahanamoku.

## I A C C E P T T H E I N V I T A T I O N !

( ) My gift of \$\_\_\_\_\_ is enclosed

( ) I am a member of the Outrigger Canoe Club.

Please add \$\_\_\_\_\_ per month to my OCC statement in support of ODKF

OCC # \_\_\_\_\_

Signature \_\_\_\_\_

Print name \_\_\_\_\_

You may designate your donation as a memorial gift.

In memory of: \_\_\_\_\_

Or you may designate your donation be applied to one of our Board Designated Funds: MCCARTHY, MACFARLANE, KUKEA, HAINE, CLINE MANN, ARNOTT, AYAU (circle one or more)

Mail to: ODKF  
P O BOX 2498  
Honolulu HI 96804



## Backward Glances

By Corrine L. Shulman  
Historical Committee

### 50 Years Ago

#### Herbert M. Taylor, President

BRAVE WOMEN MEMBERS TO VISIT DARKEST AFRICA. A safari organized to visit Africa is virtually an OCC venture. Among the brave women are: Mrs. Louis Baron, Mrs. Oscar J. Burnett, Mrs. Tony Guerrero, Mrs. Nat Norfleet, and Mrs. Albert K.B. Lyman. Kenya, Mombasa, Zanzibar, Nairobi, the Congo, the Nile - it all sounds thrilling and we hope one of the wahine writes us a long story about it. How about it, Peaches, or Aimee, Claire or any or all of you? Our members would like it.

Below are but a few of our welcome guests from reciprocal clubs: Colonel Charles K. Lindbergh, New York; Mr. Rocky Marciano, World's Heavyweight Champion, Brocton, Mass., and Miss Jane Russell, R.K.O., Hollywood.

### 45 Years Ago 1959

#### Ronald Q. Smith, President

Liberace's famous violin playing brother George paid the Outrigger Canoe Club a visit in between a tour of island performances that included a Christmas show at the Hansen's disease center at Kalaupapa on Molokai.

### 25 Years Ago 1979

#### William Eggers III, President

Dale Hope Wins Paddleboard Race-off. To determine the best OCC paddler, a race off was held December 2 with Dale Hope coming out top man. His time was 29:40. The prize for the race was the privilege of using the new OCC paddleboard in the Waikiki Ocean Race on December 30. The board was shaped by Joe Quigg (fiberglass by Boscoe Burns) and conforms to the new class rules set up by OCC which call for an overall length not to exceed 12 feet, with weight not less than 20 pounds. Others who competed in the race-off were Donny Mailer, Paul Manaut, and Jay West.

### 10 Years Ago 1994

#### Chuck Swanson, President

Six Outrigger paddlers are members of the first Hawaii women's team entered in the Thailand International Swan Boat Races, Asia's famous boat-racing competition. Nicole Wilcox, Lisa Livingston, Tia Payes, Cathy Ho, Kristen Spengler and Missy Mowat have been practicing on the Ala Wai with the Hawaii team learning to paddle on one side only. The Swan Boats are similar to Chinese Dragon Boats and entirely different from our outrigger canoes. Good luck girls.



## In Memoriam

Robert L. Haniman

Deceased: January 2000

Member: 35 Years

John Thomas Collins

Deceased: October 7, 2003

Member: 21 Years

Arlen M. Scott

Deceased: October 31, 2003

Member: 48 Years

Nichole H. Howe

Deceased: November 2, 2003

Member: 6 Years

William W. Saunders

Deceased: November 2, 2003

Member: 36 Years

Karin A. Latham

Deceased: November 9, 2003

Member: 18 Years

Hannah Beaumont

Deceased: November 19, 2003

Member: 3 Years

Jack H. Magoon

Deceased: November 24, 2003

Member: 52 Years

## newmembers



G. Lee  
Fitzgerald  
Nonresident



Brian M.  
Gauthier  
Intermediate



Wil K.  
Yamamoto  
Intermediate

### Junior

Nicole K. Fernandez  
Alexandra C. Resich  
Brittany L. Scott  
Kent-Moses K. Lighter  
Christina U. Lighter  
Mika Y. Dewitz  
Yuka Y. Dewitz

### Regular

Jamie L. Sabatini  
Kaira P. Resch  
Lisa Fong-Hunsaker

### Nonresident

Marguerite D. Durant

**Rarotonga Beach Bungalows**  
...barefoot in the sand everyday on Titikaveka Beach  
...Style...  
...Solitude...  
...Sophistication...  
[www.rarobeachbungalows.com](http://www.rarobeachbungalows.com)



# Mini 'Riggers Enjoy Keiki Christmas Party

Photos by Marilyn Kali



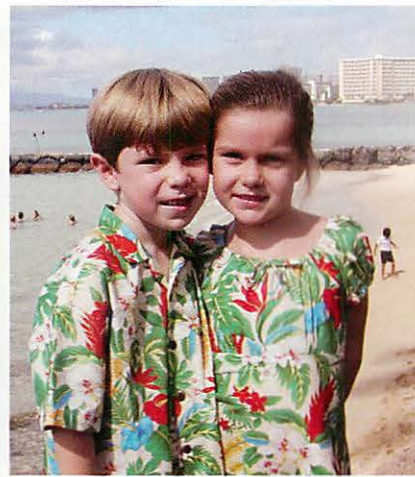
Keiki gathered for a magic show by JJ the Clown before Santa's arrival.



Natalie Overton



Blaine Granger and Antonio Espinoza



Davis & Emalia Eichelberger



Julia, Alan and Davis Lau



Haley, Darrow and Alikea Durham

**CC&H**  
A SWEET SUITE DEAL

**Next door to OCC  
ABSOLUTE LUXURY**

See sunrise over  
Diamond Head,  
Sunset over the water  
\*Maid Service,  
totally furnished  
\*Washer/Dryer  
\*Covered parking  
\*and more

**\$3,400 per month**

**Wendy Lazer**  
Owner/Broker  
Condos & Homes

Call:  
(808) 951-1500 or  
(808) 926-6343

Email:  
wendy@condosandhomes-hi.com

CONDOS & HOMES



# Reciprocal Club Review

By Valerie Davis

A recent addition to our list of Reciprocal Clubs, the Hilo Yacht Club is a favorite of many Outrigger members. The club was organized in 1913 by a group of Hilo gentlemen as a social club to "promote aquatic and other athletic sports and pastimes".

Through the early years it had several locations, finally ending up in 1939 on 2.84 acres of beautiful ocean front land in Keaukaha. Unfortunately the 1946 tsunami washed it all away and many members departed Hilo after that also. But 49 hard core members personally guaranteed the mortgage and rebuilt the current clubhouse in the same location.

## OCC Social Calendar

### January

- 1 New Year's Day Buffet, 6 p.m.
- 5 Bridge, Noon
- 8 Lobster Night, 6 p.m.
- 12 Bridge, Noon
- 19 Bridge, Noon
- 19 Family Buffet, 6 p.m.
- 26 Bridge, Noon
- 29 Lobster Night, 6 p.m.
- 31 Club BBQ, 6 p.m.

### February

- 2 Bridge, Noon
- 9 Bridge, Noon
- 12 Lobster Night, 6 p.m.
- 14 Valentine's Day
- 16 Bridge, Noon
- 23 Bridge, Noon
- 26 Lobster Night, 6 p.m.

### March

- 1 Bridge, Noon
- 8 Bridge, Noon
- 11 Lobster Night, 6 p.m.
- 15 Bridge, Noon
- 22 Bridge, Noon
- 29 Lobster Night, 6 p.m.

Today the club offers year-round social and recreational opportunities with some of the Island's finest dining, all in a relaxed elegant atmosphere. The focal point of activity revolves around the spacious oceanfront pool; there are also three tennis courts, a black sand volleyball court, and beautifully manicured grounds. Interestingly enough there are no boats or mooring facilities.

The beautiful dining room serves lunch Monday-Friday and dinner Tuesday-Saturday. In addition there's a grill window open daily from 11:30 a.m.-5:30 p.m. and the Bar which is open every day from 11:30 a.m. to closing.

Banquet rooms are available for meetings, parties and special events. Bathing suits and tank tops are not permitted in the dining room at any time. Shirts with collars are required and shorts may be worn at lunch but not for dinner.

Gratuity of 15% and Hawaii Excise Tax is added to all checks but additional tipping is permitted. The club will accept cash or credit cards in payment, and if necessary will bill back to OCC. A letter of introduction is requested.

Several OCC members, including Wendell Brooks and Lisa Livingston, have spoken very highly of this club and would recommend it to all of our members traveling to the Big Island for business or pleasure.

## SPRING BREAK MARCH 21-27



"Winners' Camp is one of the best investments we made in our son, Koa. The parent day seminar was worth the tuition in itself! Every family can use the tools taught at Winners' Camp to get through the challenging teen years".

*Lani Yukimura, Koa's Mom, Koa Yukimura, 1998 Kauai High School Graduate - Hawaii Pacific University*

"One of the most significant lessons I learned at Winners' Camp is that 'We cannot escape the results of our actions, we get what we give'. I have been given so much and I want to give back to my Island community by becoming a Psychologist and work with teens and their families".

*1999 Punahou Graduate, Mara Pavich - University of Redlands*



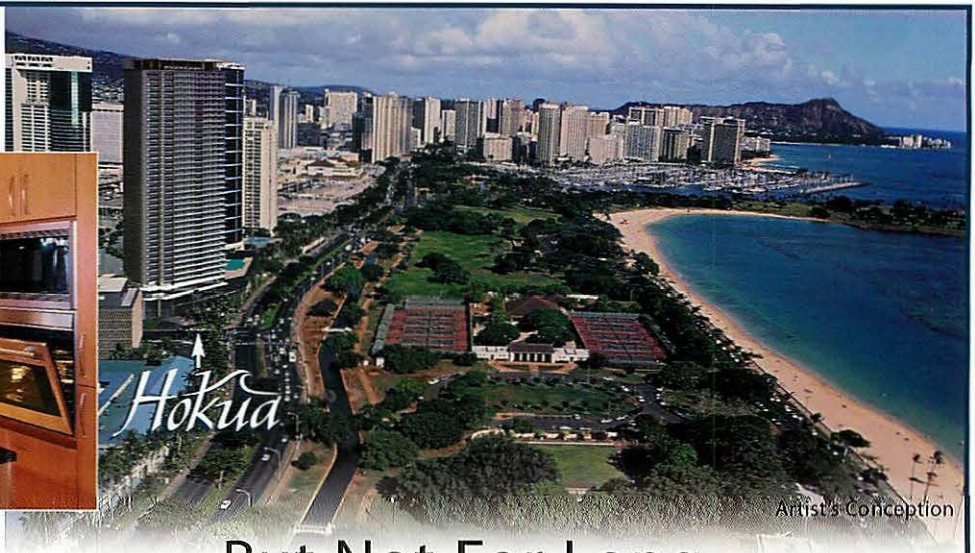
**WINNERS'**  
**CAMP**  
**LEADERSHIP**  
**ACADEMY**

Sign up online  
[www.winnerscamp.com](http://www.winnerscamp.com)  
[success@winnerscamp.com](mailto:success@winnerscamp.com)

**808 306-8008**



A Rare Opportunity...



Artist's Conception

## But Not For Long.

Hokuia means, "the majestic crest rising high above the surrounding sea." In this case 40 stories high above Ala Moana beach. Here, every luxury condominium residence will have sweeping views across miles of Pacific Ocean. However, the opportunity to live in this location is vanishing quickly. Call today for a brochure or personal tour.

**Hokuia**  
1288 ALA MOANA

Fee Simple Luxury Residences

### Hokuia Sales Center

1240 Ala Moana Boulevard, (IBM Bldg) Suite 600  
Honolulu, Hawaii 96814  
(808) 593-1788 • [www.hokuia.net](http://www.hokuia.net)

### Open Daily

Monday-Saturday 9:30 am-5 pm / Sunday 12 Noon-5 pm


Heyer and Associates LLC (R)

Exclusive Project Broker / Courtesy to Brokers

Broker must accompany buyer on first visit.

Hokuia Development Group LLC



 **Happy New Year**

*My Best wishes for  
Peace, Health and  
Happiness in  
2004*



If you're selling your home, call Jackie about our affiliation with Sotheby's International Realty  
email: [JackieCollins@hawaii.rr.com](mailto:JackieCollins@hawaii.rr.com)

Office 808-739-4465  
Mobile 808-224-4285

**Jacqueline Collins**  
Realtor Associate



**Mary Worrall Associates**

Exclusive Affiliate

**SOOTHEY'S**

International Realty

Kahala Mall Office Tower, Suite 100 • Honolulu, Hawaii 96816  
808.735.2411 • fax 808.739.4411 • e-mail: [home@worrall.com](mailto:home@worrall.com) • [www.worrall.com](http://www.worrall.com)

Jan 2004



**LUNA**  
JEWELS

1221 KAPIOLANI BLVD • SUITE 112  
HONOLULU, HAWAII 96814  
808-591-1117  
[www.Lunajewels.com](http://www.Lunajewels.com)



# Koa Lanai Menu

## APPETIZERS

### STUFFED PORTOBELLA MUSHROOM 9.95

*With Fresh Spinach, Imported Gorgonzola and  
Toasted Pine Nuts*

### HOME MADE PRAWN RAVIOLI 7.95

*Creamy Kaffir Lime Leaf Sauce*

### PACIFIC SEAFOOD TRIO 8.25

*Fresh Island Ahi Poke, Lomi Lomi Salmon  
and Tahitian Scallop Ceviche*



Petit Filet Mignon

### SMOKED SALMON "PIZZA" 7.50

*Waimanalo Arugula, Sweet Bell Pepper, Capers  
and Horseradish Cream*

### ROUGIE FOIE GRAS AND TRUFFLE PATE 12.75

*With Muscat des Beaumes de Venise Gelee  
and Radish Sprouts*

### SASHIMI Market price

*Thinly Sliced Top Grade Ahi with Shredded  
Daikon, Wasabi and Shoyu*

### CHICKEN SATAY 6.35

*Four Sticks of Flame Broiled Marinated  
Chicken With a Spicy Peanut Sauce and  
Mango Chutney*

### VEGETARIAN SPRING ROLLS 6.25

*Lettuce, Cucumber, Mint and  
a Thai Dipping Sauce*

### MEZZE PLATE 7.25

*Toasted Pita Bread with Hummus,  
Babaganoush and Taboulleh*

### BLUE CRAB DIP 6.50

### ARTICHOKE, SPINACH AND BLUE CHEESE DIP 5.95

*Served with Toasted Pita Bread*

### BAR-B-QUE TERIYAKI MEAT STICKS 6.50

*Three Sticks of Tender Flame Broiled Beef  
Brushed with Teriyaki Sauce*

## SALADS

### WAIMANALO BABY GREENS WITH BUFFALO MOZZARELLA 9.95

*Red Bell Pepper, Pesto, Prosciutto  
and Balsamic Vinaigrette*

### ARUGULA, BLUE CRAB AND BUTTERNUT SQUASH SALAD 8.25

*In a Poppadum Bowl with a Sweet Ginger,  
Lime Dressing*

### BUTTER LETTUCE WITH JUMBO PRAWN, AVOCADO AND PUNA PAPAYA 10.25

*Honey Mustard Dressing*

### OCC HOUSE SALAD 3.00

*Crisp Green Lettuce with Shredded Carrots,  
Sliced Mushrooms and Tomato Wedges*

### CAESAR SALAD 7.25 Half Order 4.75

*With Grilled Chicken Breast 9.50  
Half Portion 6.25  
With Blackened Ahi 11.55  
Half Portion 7.65*



Broiled Ahi

## CLUB FAVORITES

### SPAGHETTI 9.55 Half Portion 6.25

*With Meat or Marinara Sauce*

### PROSCIUTTO AND BASIL PIZZA 10.75

*Buffalo Mozzarella, Olives and Anchovies*

### BEEF STEW AND RICE 7.75

*Half Portion 5.10*

*Tender Chunks of Beef with Potatoes, Carrots  
and Onions over Steamed White Rice*

### BLACK ANGUS BURGER 6.95

*with Cheese 7.45*

*Choice Ground Chuck Patty Topped With  
Sautéed Mushrooms and  
Onions, Bacon, Lettuce and Tomatoes*

## ENTREES

### FRESH FISH

### MAHIMAHIMAHI 22.95

### OPAKAPAKA 26.50

*Choice of the following preparations:  
Sautéed, Flame Broiled or Cantonese Style  
Furikake Jasmine Steamed Rice*

### LEEK, MUSHROOM AND GOAT CHEESE LASAGNA 14.95

*With Arugula and Balsamic Vinaigrette*

### BROILED FRESH AHI 18.95

*Mash Potato, Spinach, Tomato-Maui Onion  
Salsa and Mustard Soy Beurre Blanc*

### THAI STYLE SEARED SALMON 16.75

*Jasmine Rice, Snake Beans and  
Panang Curry Sauce*

### BROILED NEW YORK STEAK WITH CRISPY ONION RINGS

*9 ounces 19.25 12 ounces 22.75  
Wasabi Mash Potatoes, Watercress and Red  
Wine-Ginger Sauce*

### SAUTÉED MAHIMAHIMAHI, OCC STYLE 13.15

*Steamed White Rice, Broiled available upon  
request*

### ROASTED PRIME RIB OF BEEF, THYME JUS 18.50

### PADDLER'S CUT (12 OUNCES) 20.50

### LEMONGRASS CHICKEN BREAST 15.95

*Crispy Cake Noodle, Bok Choy  
and Lime Sauce*



### PETIT FILET MIGNON 21.95

*Pommes Pont Neuf, Spinach  
and Bearnaise Sauce*

### BROILED GARLIC MARINATED LAMB CHOPS 27.50

*Basil Mash Potato, Asparagus and a  
Chanterelle Sauce*

Executive Chef Manfred Pirscher

Executive Sous Chef Arnaud Jager





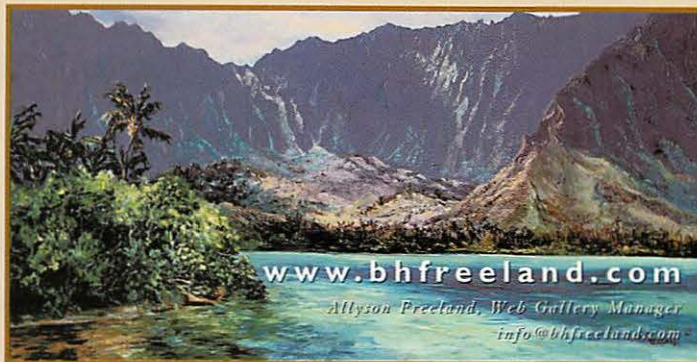
William Segil  
"Sandpiper"  
Digital Photograph

Laura Dickie Segil

818-547-6741

Please Visit Our Site: [www.segilineart.com](http://www.segilineart.com)

Fine Living, Fine Art



[www.bhfreeland.com](http://www.bhfreeland.com)

Allyson Freeland, Web Gallery Manager  
info@bhfreeland.com



**Mary Worrall Associates**

Exclusive Affiliate SOTHEBY'S International Realty



**BARBARA BRYAN**

REALTOR • GRI

DIRECT (808) 739-4486

RES (808) 955-5087 CELLULAR: (808) 927-3929

KAHALA MALL OFFICE TWR. SUITE 100 HONOLULU, HI 96816

TEL (808) 735-2411 FAX (808) 739-4411

E-MAIL: babahi@gte.net WEBSITE: [www.worrall.com](http://www.worrall.com)



**734-2804**

Family-run business providing  
good fun and quality service

call  
**Matt Rigg**  
for details

[www.alohabounce.com](http://www.alohabounce.com)



**Sue Alden-Rudin, RN, BSN**

Client Service Consultant

1580 Makaloa St., Suite 1060

Honolulu, HI 96814

Ph: 739-2811

Fax: 739-0169

[www.attentionplus.com](http://www.attentionplus.com)



**Attention Plus**  
*Care*

*Caring Hearts, Attentive Home Care*

Assisting with activities of daily living  
Safety • Companionship • Meals • Personal Care



**ROBERT S. FLOWERS, M.D.**

— FELLOW OF AMERICAN COLLEGE OF SURGEONS  
— CERTIFIED BY THE AMERICAN BOARD OF PLASTIC SURGERY

EXCELLENCE  
IN COSMETIC  
PLASTIC SURGERY

THE FLOWERS CLINIC  
677 ALA MOANA BLVD., SUITE 1011  
HONOLULU, HAWAII 96813

Tel: (808) 521-1999

Fax: (808) 599-2972

E-mail: [flowers@lava.net](mailto:flowers@lava.net)

Web: [www.flowersclinic.com](http://www.flowersclinic.com)



**CEDAR STREET GALLERIES**

RETAILING • CONSULTING • BROKERAGE

Mike & Sheri Schnack  
Owners / Art Consultants

Phone (808) 589-1580

Cell (808) 295-0941

Fax (808) 589-1429

817 Cedar Street, Honolulu, Hawaii 96814

[www.cedarstreetgalleries.com](http://www.cedarstreetgalleries.com)

**Countrywide can show you the way home.**

With fast up-front approvals. And direct access to the person who has the power to say "yes" to your loan. Plus rate protection while you're shopping for a home. Call us today.



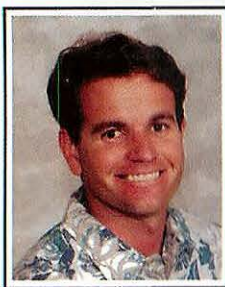
**Jon Whittington**

Vice President/Hawaii Manager

(808) 532-1150 Ext. 221



Equal Housing Lender. ©1999 Countrywide Home Loans, Inc. Trade/service marks are the property of Countrywide Credit Industries, Inc. and/or its subsidiaries. Up-front approval subject to satisfactory appraisal and no change in financial condition. 990438-699



**DAVID E. BUCK**

REALTOR-ASSOCIATE®

(808) 732-1414 BUSINESS

(808) 732-0914 FAX

(808) 738-3944 DIRECT

[davidb@cbpacific.com](mailto:davidb@cbpacific.com)

(808) 371-3509 CELL



PACIFIC PROPERTIES

4211 Waiālae Avenue, Suite 104

Honolulu, HI 96816

[www.hawaiihomelistsings.com](http://www.hawaiihomelistsings.com)

Each Office Is Independently  
Owned And Operated.



**CRUISE VOYAGES**

*"Specializing in Cruise Ship Travel"*

**VALERIE DAVIS**

Owner

Master Cruise Counselor

Tel. (808) 955-0166 • Fax (808) 955-0036 • email: [crz\\_sbp@aol.com](mailto:crz_sbp@aol.com)





# WAIMANALO Beach Cottages

**Tommy de Harne**  
Owner

*Fully Furnished Vacation Rentals*  
41-1003 Laumilo Street • Waimanalo, Hawaii 96795  
Phone: (808) 259-5590  
www.waimanalobeachcottages.com



## The Ultimate You

Designer Consignment Boutique

**KELSEY SEARS**

Ward Centre - Honolulu, Hawaii 96814-4248  
(808) 591-8388 Fax (808) 591-9389  
E-Mail: TUYhawaii@aol.com  
www.theultimateyou.com



**ANTHONY H. McINERNEY**  
REALTOR-ASSOCIATE\*

Cell 808-381-0073  
Office 808-526-CASE  
Fax 808-523-8155  
www.caseproperties.com

**CASE**  
PROPERTIES, Inc.

1188 Bishop St., Ste. 708  
Honolulu, HI 96813

## KEA'S STUDIO

*\*A full service custom picture frame shop*  
**30 YEARS EXPERIENCE**

- Priced to fit all budgets
- Koa is my specialty
- Restoration work available
- Emphasis on quality and fine taste



Call: (808) 737-9944 for appointment & directions  
Located near Waikiki/Kapahulu Fire Station

**Gregory Wunderlich**  
PRESIDENT

2910 Park St., Suite B  
Honolulu, HI 96817  
PHONE 551.1127  
EMAIL ceo@netwunders.com  
WEB www.netwunders.com

**NETWUNDERS**  
INTERNET SOLUTIONS

*at*  
**OLD WAIALAE ROAD**  
EVENT PLANNING

**LIZ PERRY • CONNE SUTHERLAND**

2820 SOUTH KING STREET • HONOLULU, HAWAII 96826  
PHONE (808) 922-0188  
Since 1991

## Computer Tutor

PC or Mac

**Flexible Hours**

**Contact: Debra Ing**

**Phone: 395-5594**

**Email: dai0704@aol.com**



## Ralph Gray

RA, BA, e-PRO

Internet Marketing Specialist  
Luxury Homes & Beachfront Houses

**DOWER**  
REALTY, INC

1114 11th Ave. Honolulu, Hawaii 96816  
www.HawaiianBeachfront.com  
Ralph@HawaiianBeachfront.com



Off - 808-735-8838  
Cell - 808-295-0704  
Fax - 808-988-7678

## The Stott Team

A Division of Stott Real Estate, Inc.

stott.com

970 N. Kalaheo Ave., Suite C114  
Kailua, HI 96734  
Office 808-254-1515  
Fax 808-254-3166  
Toll Free 1-800-922-6811  
E-Mail: ainakuai@aol.com  
Cell: 1-808-554-6609



**Bob Vieira, R, MBA, ABR**  
The Stott Team  
REALTOR®

**DIAMOND HEAD**  
**B & B**

3240 Noela Drive  
Honolulu, Hawaii 96815

YOUR OUT OF TOWN VISITORS – OUR WELCOME GUESTS

**Joanne Trotter**  
**Brooke Trotter**  
(808) 923-3360

DiamondHdBandB@aol.com





## Employee of the Month

Our Employee of the Month is a newcomer to OCC, but one who has made a quick, positive impression. Described as very talented, helpful, and hardworking, Zaldy (Rizaldy) Alconcel can be seen at the Sunday Brunch omelet station, cooking to order. Besides brunch he works at dinner, although you can't see him then.

His title is kitchen fry prep cook, but he does the broiler, sauté and pantry. He's a very versatile guy. Sometimes he cuts the sashimi and the tako. He came to us one year ago, having formerly worked at the Sheraton and at Keo's.

Zaldy left the Philippines 10 years ago, and is now an American citizen. He lives in Kapalama and has family members in Hawaii.

We like to give you little known facts, and here is a good one: Zaldy is the Captain of a basketball team composed of OCC staff, and they practice every Monday night. They play on public courts, sometimes on the Paki courts, so if you go by there on Monday night, stop and watch your waiters, bus staff, and cooks, working out.

## Board Briefs

Board Briefs is taken from the minutes of the November 20, 2003 meeting of the Board of Directors. The November Executive Committee meeting was canceled.

**General Manager Search:** Thirty-six resumes were received for the General Manager position. Personal interviews were completed on four candidates with two candidates selected for the final interview for the General Manager's position. The final two interviews will be on December 8, 2003 with the recommended candidate's name submitted for Board approval at the December 18, 2003 Board of Directors Meeting.

**Treasurer's Report:** The 2004 Annual Budget was adopted. The Board approved the following dues & locker fee increases effective January 1, 2004: Senior, \$56.50; Regular, \$113.00; Intermediate, \$78.25; Associate (parent member) \$12.00; Associate (parent non-member), \$17.50; Junior (parent member), \$12.00; Junior (parent non-member), \$17.50; Service, \$78.25; Student Inactive, \$6.25. The new Annual Nonresident dues will be as follows: Under age 18, \$52.50; Age 19 through 29, \$234.75; Age 30+, \$339.00. The Board also increased fees for the Men's & Women's Locker Rooms as follows: Extra Large \$20.35; Large, \$15.35; 2-Tier, \$13.70; 3-Tier, \$11.25; Rental Lockers, \$4.15. Junior Locker Room rates will be: Regular, \$13.30 and 2-Tier, \$7.15. Surfboard Lockers will cost: Single, \$8.95 and Double, \$12.90. Boat Lockers will be \$16.90.

**Judges of Election:** The Board approved the following to serve on the Judges of Election Committee: George Norcross, chairperson; Norman Ho, Mark Johnson, Mary Smolenski, Dennis M. Torres, Laurie Callies, Peter Balding, Carolyn Corrigan, Pat O'Connor, Libbie Kamisugi, John A. Lacy, Tay Perry, Dean A. Eyre Jr., James K. Anderson.

**Annual Meeting:** The Annual Meeting will be held on Monday, February 23, 2004 at 5:30 p.m.

**Boy's & Girl's Club Water Sports Day:** The Boy's & Girl's Club Water Sports Day will be on April 10, 2004. There will also be hub events including surfing, volleyball and paddling, which will be sponsored by the Winged "O" members and scheduled throughout the year.

**Secretary's Report:** The Board voted to suspend two members for 15 days and to terminate their memberships if their accounts are not paid in full by the end of the 15-day period. One member was automatically terminated, due to his account being delinquent four times during a 12-month period.

**General Manager's Report:** October was a good month for the Club coming in at \$54,020 better than budget. However this good result is primarily the result of unusual items and timing differences. . . Beef prices on the better cuts of beef have risen 50% within the past month and are expected to remain at a high level for some time. Management is making changes in the back of the house to offset a portion of this increase and are making moderate price changes to the breakfast buffet and Sunday dinner buffet, and increasing the price of coffee to \$1.50. The price of coffee in the Snack Shop will remain \$1 and there will not be a price change in the Family Buffet. Even with these price increases, the Club will still be facing high food costs over the next few months. To help offset this increase in food cost we will be tightening up on payroll and other expenses both in Food and Beverage and other areas of the Club.

**Admissions & Membership Report:** The membership count was 4,676 as of October 31, 2003.

**Building & Grounds Report:** Richard Andrzejewski, the Maintenance Director, resigned.

**Long Range Planning Report:** The Board requested that the Long Range Planning Committee study the initiation fee structure and make a recommendation of any increases to the Board of Directors by the January 2004 Meeting.

### Gold Coast Oceanfront



Rare combination of two beachfront units in the Colony Surf, renovated with luxurious details. Two bedrooms, two baths, two parking, spacious master suite with sitting/study area.

**Listed at \$2,000,000 Fee Simple**

**Mary Worrall (R)**

808.228.8825 Cellular • 808.735.2411 Office



**Mary Worrall Associates**

Exclusive Affiliate

**SOTHEBY'S**

International Realty

Jan 2004

Kahala Mall Office Tower, Suite 100 • Honolulu, Hawaii 96816  
808.735.2411 • fax 808.739.4411 • e-mail: home@worrall.com • www.worrall.com



# january 2004

## special events

18 FULL MOON  
19 MARTIN LUTHER KING DAY HOLIDAY

26-27-28  
JELLYFISH  
WINDOW



Sunday	Monday	Tuesday	Wednesday	Thursday	Friday	Saturday
				<b>1</b> Lunch & Dinner Service  <b>NEW YEAR'S DINNER</b>	<b>2</b> Lunch & Dinner Service	<b>3</b> Hau Terrace Lunch Dinner Service
<b>4</b> BRUNCH 8:30am Evening Buffet 6pm	<b>5</b> Noon Bridge Hau Terrace Lunch & Dinner Service	<b>6</b> Lunch & Dinner Service	<b>7</b> Lunch & Dinner Service	<b>8</b> Lunch & Dinner Service  <b>LIVE MAINE LOBSTER</b> Koa Lanai 6pm	<b>9</b> Lunch & Dinner Service	<b>10</b> Hau Terrace Lunch Dinner Service
<b>11</b> BRUNCH 8:30am Evening Buffet 6pm	<b>12</b> Noon Bridge Hau Terrace Lunch & Dinner Service	<b>13</b> Lunch & Dinner Service	<b>14</b> Lunch & Dinner Service	<b>15</b> Lunch & Dinner Service	<b>16</b> Lunch & Dinner Service	<b>17</b> Hau Terrace Lunch Dinner Service
<b>18</b> BRUNCH 8:30am Evening Buffet 6pm	<b>19</b> <b>HOLIDAY</b> Noon Bridge Hau Terrace Lunch <b>FAMILY BUFFET 6pm</b>	<b>20</b> Lunch & Dinner Service	<b>21</b> Lunch & Dinner Service	<b>22</b> Lunch & Dinner Service	<b>23</b> Lunch & Dinner Service	<b>24</b> Hau Terrace Lunch Dinner Service
<b>25</b> BRUNCH 8:30am Evening Buffet 6pm	<b>26</b> Noon Bridge Hau Terrace Lunch & Dinner Service	<b>27</b> Lunch & Dinner Service	<b>28</b> Lunch & Dinner Service	<b>29</b> Hau Terrace Lunch & Dinner Service  <b>LIVE MAINE LOBSTER</b> Koa Lanai 6pm	<b>30</b> Lunch & Dinner Service	<b>31</b> Hau Terrace Lunch Dinner Service  Club BBQ 6pm

# february 2004

## special events

Don't forget your sweetie on Valentine's Day

1 Super Bowl Sunday

16 President's Day

16 Great Aloha Run

23 Vote & Attend your ANNUAL MEETING

28 Oahu Perimeter Run

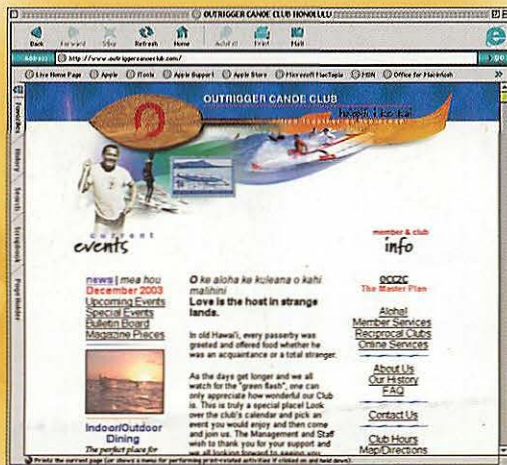
15-16-17  
JELLYFISH  
WINDOW

Sunday	Monday	Tuesday	Wednesday	Thursday	Friday	Saturday
<b>1</b> BRUNCH 8:30am Evening Buffet 6pm	<b>2</b> Noon Bridge Hau Terrace Lunch & Dinner Service	<b>3</b> Lunch & Dinner Service	<b>4</b> Lunch & Dinner Service	<b>5</b> Lunch & Dinner Service	<b>6</b> Lunch & Dinner Service	<b>7</b> Hau Terrace Lunch Dinner Service
<b>8</b> BRUNCH 8:30am Evening Buffet 6pm	<b>9</b> Noon Bridge Hau Terrace Lunch & Dinner Service	<b>10</b> Lunch & Dinner Service	<b>11</b> Lunch & Dinner Service	<b>12</b> Lunch & Dinner Service  <b>LIVE MAINE LOBSTER</b> Koa Lanai 6pm	<b>13</b> Lunch & Dinner Service	<b>14</b> <b>VALENTINE'S DAY</b> Hau Terrace Lunch Dinner Service
<b>15</b> BRUNCH 8:30am Evening Buffet 6pm	<b>16</b> <b>HOLIDAY</b> Noon Bridge Hau Terrace Lunch & Dinner Service <b>FAMILY BUFFET 6pm</b>	<b>17</b> Lunch & Dinner Service	<b>18</b> Lunch & Dinner Service	<b>19</b> Lunch & Dinner Service	<b>20</b> Lunch & Dinner Service	<b>21</b> Hau Terrace Lunch Dinner Service
<b>22</b> BRUNCH 8:30am Evening Buffet 6pm	<b>23</b> Noon Bridge Hau Terrace Lunch & Dinner Service <b>ANNUAL MEETING 5:30pm</b>	<b>24</b> Lunch & Dinner Service	<b>25</b> Lunch & Dinner Service	<b>26</b> Lunch & Dinner Service  <b>LIVE MAINE LOBSTER</b> Koa Lanai 6pm	<b>27</b> Lunch & Dinner Service	<b>28</b> Hau Terrace Lunch Dinner Service  Club BBQ 6pm
<b>29</b> BRUNCH 8:30am Evening Buffet 6pm						



# www.outriggercanoecub.com

## the official website of the



## OUTRIGGER CANOE CLUB

Log on for the Latest News about the Club and its Members,  
Social and Athletic Events, Dining and to Place your Logo Shop Order



PRINTED ON RECYCLED PAPER

PRINTED IN HAWAII

On the Cover: Ned Snow is a winning member of the Outrigger Canoe Club Surf Team. Story and more photos of Ned and team member Carissa Moore may be found on pages 7 and 9.

The Outrigger Canoe Club  
2909 Kalakaua Avenue  
Honolulu, Hawaii 96815

## THE OUTRIGGER

Published by the  
Outrigger Canoe Club  
2909 Kalakaua Avenue  
Honolulu, Hawaii 96815  
Phone: 923-1585/921-1485  
Fax: 921-1414  
Koa Lanai: 921-1444  
Beach Attendants: 921-1460  
Logo Shop: 921-1432

<http://www.outriggercanoecub.com>

### Directors

Glenn Perry, *President*  
Jaren Hancock, *Vice-President Operations*  
Sue Tetmeyer, *Vice-President Activities*  
William Swope, *Treasurer*  
Barbara Stehouwer, *Secretary*  
Tiare Finney, *Asst. Secretary/Historical*  
Gregg Robertson, *Assistant Treasurer/House*  
Alan Lau, *Admissions & Membership*  
Tom McTigue, *Athletics*  
Don Parker, *Building & Grounds*  
Vik Watumull, *Entertainment*  
Wendell Brooks, *Finance*  
Larry Johnson, *Long Range Planning*  
Sue Tetmeyer, *Public Relations*

### Standing Committees

Al Serafin, *Admissions & Membership*  
Marc Haine, *Admissions & Membership*  
George Wessberg, *Athletics*  
Mike Cote, *Building & Grounds*  
Missy Mowat, *Entertainment*  
Brad Wagenaar, *Finance*  
Moana McGlaughlin-Tregaskis, *Historical*  
Gloria Keller, *House*  
Bob Dewitz, *Long Range Planning*  
Jon Bryan, *Public Relations*

### Management Staff

Vacant, *General Manager*  
Gordon Smith, *Comptroller*  
Vacant, *Food & Beverage*  
Vacant, *Maintenance Director*  
Manfred Pirscher, *Executive Chef*  
Debbie Stanley, *Executive Secretary*  
JoAnne Huber, *Management/Admissions Secretary*

### Outrigger Staff

Marilyn Kali, *Editor*  
Fax: 833-1591  
email: OCCMag@aol.com  
Gerry DeBenedetti, *Assistant Editor*  
Pam Davis, *Advertising*  
Phone: 596-4422  
Fax: 593-0839  
Email: pdavis@lava.net

Designed & Printed by Obun Hawaii, Inc.

Presorted Standard  
US Postage  
PAID  
Permit No. 174  
Honolulu, Hawaii