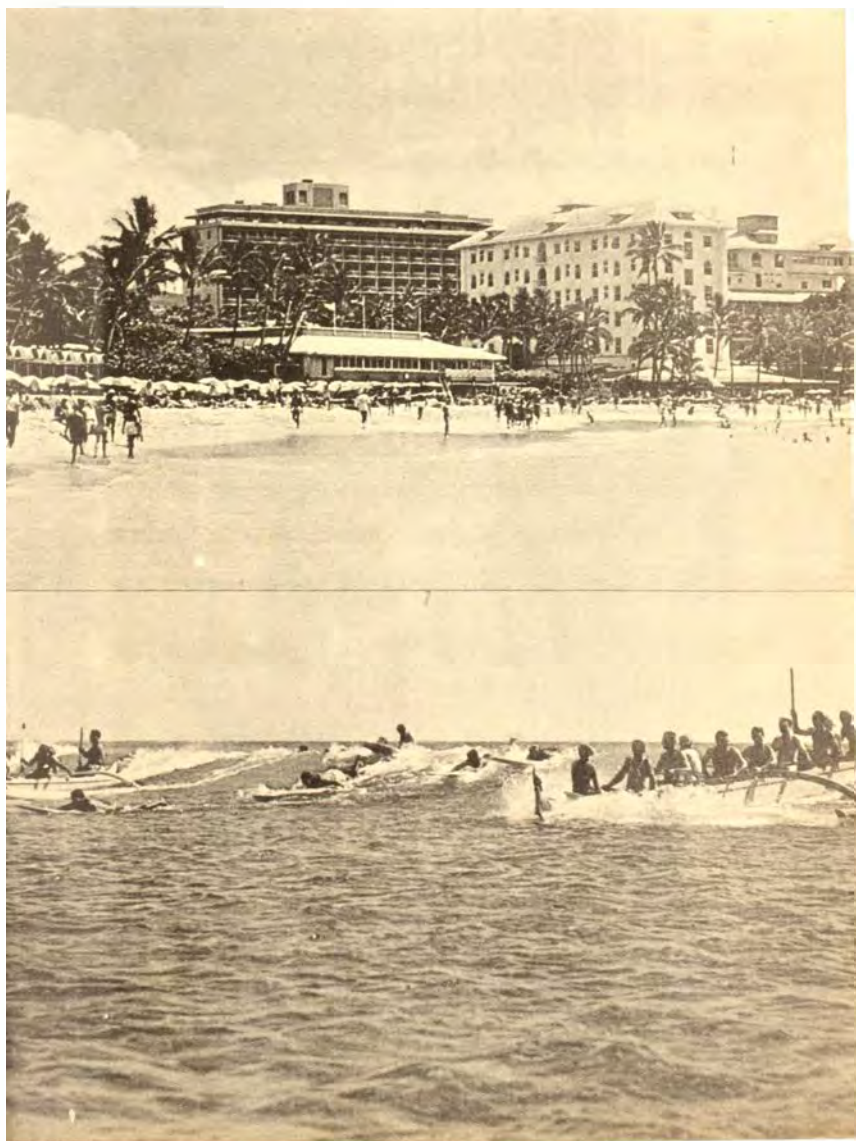


OUTRIGGER  
CANOE CLUB  
**forecast**

OCTOBER 1961



VOL. 20

NO. 10



Issued by the  
BOARD OF DIRECTORS

Genie Pitchford, Editor

FORECAST COMMITTEE

Mariechen Jackson, Chairman  
Harriet "Rusty" Thomas Ed Greaney  
Harold Yost

Manager — E. S. Tudor

## OUTRIGGER CANOE CLUB

Founded 1908

TEL OFF 939836 — BEACH SERVICE 935202

### OFFICERS

J. WARD RUSSELL	President
J. CLINE MANN	Vice President
HAROLD WHITAKER	Secretary
T. J. S. MUIRHEAD	Asst. Secretary
HERBERT TAYLOR	Treasurer
WILLIAM CROSS	Asst. Treasurer

### DIRECTORS

Reynolds Burkland	Victor Kahn
George (Dad) Center	T. Cliff Melim, Jr.
Willford D. Godbold	A. E. (Tools) Minvielle
Fritz Herman	Francis J. (Link) Moore
Mariechen Jackson	
Life Member — Duke Kahanamoku	



*it tastes better*

MIXED WITH

**CANADA DRY**

CLUB SODA • GINGER ALE  
QUININE WATER • COLLINS MIXER  
HI-SPOT LEMON



### ON THE COVER

*In the upper photo the Outrigger Canoe Club is dwarfed by hotels built at Waikiki because of year round water pleasure such as that shown in the lower photo.*

## Your Editor



genie V pitchford

*Gets a Word in Edgewise*

### FORECAST NEEDS YOUR KOKUA

Forecast sure needs contributors. The Club has many committees and if reports of their meetings were submitted to the editor the membership could be kept better informed of OCC activities.

Your editor also recognizes that the Club has many Junior Members who spend a great deal of time on the premises with such activities as volleyball, surfing, canoeing, etc. In an effort to make it possible to have pictures and stories covering their participation in Club affairs a Junior Editor was sought via the Forecast and also on a personal solicitation basis. These efforts were not successful and as a result it may be that some of the important goings on among the Junior Members are overlooked.

Because of the full support of the membership in agreeing to a \$2.00 subscription charge at the first of this year, and also because of increased advertising support, the Forecast is now published "in the black". For many years it cost the Club approximately \$350.00 a month to produce the publication. So now we balance out dollarwise, but there is an imbalance in the lack of material and photos.

We need news, pictures and ads... and any one or all of these which you contribute will help us to have a more informative Forecast. Just pass the material along to the manager's office and we'll do the rest.

Any suggestions?

### WE'RE SO GLAD

That the Molokai-Oahu race is going to end at Waikiki. The story and pictures on pages 8-9 urged just that. Forecast was already at press when the good news came through, but it's nice to know that we were on the right track.

### ANY SQUAWKS? SUGGESTIONS?

If you have any complaints or suggestions concerning the bar or dining room service, hours or menus please refer them to the Bar and Mess Committee. Members are John Chamberlain, chairman, Cliff Melim, Bob Fischer and Bud Soule. This committee will make every effort to act on your requests and if you feel that you are not satisfied with the action taken it is suggested that you then take the matter up with the Board of Directors.

### NEW CLUB PLANS SUBMITTED

Architects Val Ossipoff and Pete Wimberly last week presented to the steering committee revised schematic plans showing a club-residence concept at the Diamond Head site. A three-floor structure providing parking for 300 cars occupies the mauka half of the property while three floors of club facilities occupy the makai half. On about the middle is situated a square tower of 20 stories containing 100 residential units. This general plan, which has approval of the committee, appears very functional as well as flexible that in case of expediency the club and residence tower can be constructed in separate increments.

The plan will be presented to the membership at a meeting to be held this month, at which time approval to proceed will be requested. Then will follow a period of three or four months during which the market for the residences and financing of the project will be determined. Thereafter will come the preparation of working drawings and commencement of construction in July 1962.



# Surf n Sand Sun

Allan Ledford, president of King Kalakaua Motors, has recently moved his company into larger quarters at 1945 Kalakaua Ave. A 75 year lease has been signed for the 19,000 square feet of property at the corner of Ala Moana Blvd. and Kalakaua Ave., formerly the location of Kalakaua Drive-In.

King Kalakaua motors is local distributor for Vespa and Honda motor scooters. They also sell used cars and operate a U-Drive service including the Sports Car Rental division of the company at International Market Place.

\* \* \*

Mr. O. T. (Terry) Edwards wrote a letter of appreciation to Manager Tudor, thanking him for the wonderful service, pupus, menu, etc., which were served during the dinner-meeting of his fellow Rajahs at their August gathering.

You're on the Right Path with

## Sun Bath

TANNING LOTION  
by Revlon



Twice the tan in half the time!

Available at many, many stores  
and Club Beach Services

Barry and Joann Yap now have full membership in BBB—Boyd, Blayne and Bret. Young Boyd joined the Yap family September 1st. Daddy Barry is with Matson, sometimes at sea, sometimes ashore . . . but bet he's up in the clouds now.

\* \* \*

Richard and Lorna Sylva became parents for the first time recently when Douglas Everett entered their lives. Barry will be very happy to give you some hints on Bottles, Baby Sitting and rubber Baby Buggy Bumpers, folks.

\* \* \*

Pat O'Conner 'I Dood' it August 26th when he became the bridegroom of Mary Ann Velin at Holy Trinity Church. Pat graduated from Punahou and the University of California, while Mary Ann is an alumna of Valley Junior College in Van Nuys. The whole thing makes bachelors scarce and scarcer.

\* \* \*

The Herb Foxes entertained more than 100 friends at cocktails at their home Sunday, September 17th.

\* \* \*

Bill Capp dropped us a card from Germany where he was on a special assignment. He and his family still miss Hawaii and are looking forward to returning "B 4 2 long", as Bill puts it. Also, Bill, thanks for saying you like the Forecast.

Bill and Celeste Phipps back Honolulu once again, but not for long. Leaving this week for Australia. Bob very kindly expressed their appreciation of receiving the Forecast at the home in New York. Makes the feel right in "tune with the times the Club."

## More Surf 'n Sun 'n Sand

On September 17th Mr. and Mrs. E. S. Waters were hosts to 60 guests at a cocktail party in their Kalia apartment. These popular visitors spend four months a year in Honolulu, much of it right at OCC. Soon they will be returning to their home in Australia where the summer months are just beginning.

Mrs. W. S. Wilson entertained 19 of her lady friends at luncheon September 16th. The party later enjoyed an afternoon of bridge.



Dave



Carmen

Dave Kahanamoku was host to Carmen Lombardo at OCC last month. Carmen was relaxing after a strenuous many-months run of his Paradise Isle show at Jones Beach, New York.

Other prominent folks visiting us in September included Phil, Dennis and Lindsay Crosby, and Gordon and Sheila McRae.

Susan and Will Gortner are really quite excited about the arrival of daughter Catherine Willis who joined the family September 16th at 6 lbs. 9 oz.

## DOES THIS MEAN YOU?

Quoted from the By-Laws of the Outrigger Canoe Club: "Penalty for Delinquency: Any delinquent indebtedness at the end of each month shall be increased by a penalty of 5% and shall cause an automatic suspension of all Club privileges of the membership owing same." Period.



---

## **HAU TERRACE**

### ***Special Notice to All Members!***

**The Hau Terrace will be CLOSED on Mondays commencing  
October 2, 1961.**

**The SNACK BAR will be open Mondays as usual.**

The use of the Hau Terrace on Mondays, since the end of the summer season, has dropped to the point where we are not taking in enough to pay the help, without considering the cost of food and liquor.

---

*The Most Pleasant and Relaxed Luncheon in Honolulu*

## **THE OUTRIGGER LUNCHEON BUFFET**

**EVERY NOON — TUESDAY THRU FRIDAY**

**Mahimahi — Hot Dishes — Salads**

**Only \$1.50**

**Desserts, 25c extra**

Mahalo to the many, many members who have gone out of their way to extend their thanks and appreciation to Max and the Manager for this beautiful buffet.





*Photo at the left shows OCC beach front where first Molokai Middle photo shows beach at Hawaiian Village where race has place to end race this year. That stuff in the foreground is cor other barren "features" of this location. Coral, incidentally e very pleasant.*

## WAIKIKI ENDING FAVORED FOR RACE

There has been a lot of resistance among canoe paddlers to finishing the Molokai-Oahu annual race at Maunaloa Bay instead of at Waikiki. Toots Minvielle, father of the race which opens Aloha Week on Oahu, is very much against the change. One of the main reasons is that both the race and Aloha week started as tourist attractions to perk up a usually dull period in travel to Hawaii. Toots feels that to the tourist, Waikiki is Hawaii therefore that is the most logical place to end the race.

Also, tourists have easy accessibility to Waikiki, whereas they wouldn't have to Maunaloa Bay. And residents look forward to going to Diamond Head lookout to watch the paddlers in the last phases of the race. This is a colorful and exciting moment for both participants and spectators.

Further, Toots pointed out, to end the race at Maunaloa Bay would shorten it by 8-9 miles. The original race covered approximately 36 miles.

The first Molokai-Oahu outrigger canoe competition took place in 1952 and with each succeeding year the event has increased in popularity by spectators and enthusiasm by crews from various islands and the Mainland. Toots feels that shortening the race will diminish its importance of accomplishment and also attendance at the finish.

\* \* \*

Club Coach Rabbit Kekai's sentiments on the subject are much like those of Toots'. He adds, too, that having the long race is not only more appealing to the crews, but also to the spectators. He feels that getting started as late as 8:00 in the morning will hinder crews in getting "off to a flying start" as they won't have the crisp and bracing dawn temperature for their initial lift.

Rabbit also pointed out that finishing at Waikiki is more convenient boat-wise. Once there, it's a simple matter to paddle the boats home. But from Maunaloa Bay the canoes would have to be hauled back to Waikiki by



ger canoe race ended in 1952, and for many years thereafter. The recent years. Next is "scene" at Maunalua Bay, suggested pleasant to sit on or walk on. Note also lack of trees and water, so even wading to cool off a hot foot would not be

rafter, incurring additional expense and "humbug".

Established records could not be challenged in the shorter race which could serve as a deterrent to competitive spirit. Also, shortening the race elegates Hawaii crews to the junior position as regards the Molokai-Oahu and Catalina races.

Other paddling enthusiasts who have expressed their disappointment over the decision of the Aloha Week canoe committee to end the race at Maunalua Bay are Charlie Amalu, Bob Fischer, George Downing, Louis Mahanamoku and Dad Center.

Petitions have been circulated by the Club protesting ending the race at Maunalua Bay, and the Forecast and members of the Outrigger Canoe Club go on record as being very much against changing the pattern of the original Molokai-Oahu course.

---

*Our Advertisers have faith in us.  
It's return the compliment.*



True the whole world over . . .  
***"It's the Water"***  
 that makes the difference

OLYMPIA BREWING COMPANY OLYMPIA, WASH. U.S.A.



## M-m-m DEPT.

By Rusty Thomas, Food Editor  
DOWNSIDE UP  
MIT WHIPSCREAM

Anyone who has been a member of OCC within the last 20 years must be missing one of the dining room's reliable staff members, Elsie Taketa.

For lo, these many years, Elsie has been serving quietly and efficiently, and keeping her other talents 'under the proverbial basket'.

But the urge to wield the stirring spoon overcame her. Partners Elsie and Burdette Ripley (a former chef at the club) are now operating *The Vikings* on 12th Ave.

Between the two, they stir up some mighty good 'kau kau' or specialty dishes. Years ago, Elsie was in the catering business and excelled in cake baking and yummy desserts. She hasn't lost the art one bit, no siree—just sample some of her cheese cake or apple strudel!

'Course we couldn't expect her to give up these specialty recipes so we asked for another favorite, her pineapple ice box cake. Elsie gladly passes this on to all her friends at the Club. She says she still 'loves' us all and sends greetings to stop by and say hello at *The Vikings*.

### PINEAPPLE ICE BOX CAKE

1/2 cup sugar

1/4 cup water

Melt in double boiler. When hot add:

4 egg yolks, well beaten. Stir until smooth and thick. Pour into a bowl.

1 cup butter

2 cups powdered sugar

Cream together and add to the first mixture, which has been cooled.

1 1/2 cups well drained crushed pineapple. Add to the above mixture.

Beat the 4 egg whites until stiff.

Add 2 tbsp. powdered sugar and 1/2 tsp. vanilla.

Fold into the other mixture above.

Line a sponge cake pan with wax paper, then either lady fingers or sponge cake.

Then put layer of the mixture and a layer of the cake. Make 2 layers of mixture and 3 of cake having the top and bottom of cake.

Place in refrigerator overnight.

Two hours before serving take cake out of pan and place on plate, bottom side up.

Cover cake with sweetened whipped cream.

Place in refrigerator until ready to serve.

## Welcome New Members

### REGULAR

Mrs. Florence M. Darling

Maynard C. Groth

### ASSOCIATE

Sue Speed K. Ford

### JUNIOR

Thomas W. Bean

Jackie Maguire

Mark Gamble

Brad Becker

John Lacy

Heather Forsyth

## APPLICANTS

### REGULAR

William Robt. Morse

### SERVICE

Ens. Herbert Lawler Walmer



## CLUB MEMBERS AT YOUR SERVICE

CHARTER FISHING (Kailua, Kona)  
"KAKINA"

(JOHN HONL, CAPTAIN)

Radio Telephone, Diesel Powered

Coast Guard Inspected

Telephone Kona 258-375

FRANCIS (SHORTY) LOGSDON

Now selling Fords at Honolulu Ford

CALL HIM AT 95-261



**JUNIOR MEMBERS PLEASE NOTE.** *The above photos show a portion of your locker room before repairs, during repairs and repairs almost done. Some of the work was necessary because of termite eaten beams, some because of leaking pipes and some because of some. Please try to take good care of your renovated locker room. To do it over cost around \$400.00*

## More to pour easy to store

**with Family Size Coke**

Better stock up on Coke today ...  
the best-loved sparkling drink  
in all the world.

**REGULAR AND FAMILY SIZE!**

REG. U.S. PAT. & TM. OFF.



**SIGN OF GOOD TASTE**



Bottled under authority of the Coca-Cola Company by  
**THE COCA-COLA BOTTLING COMPANY OF HONOLULU, LTD.**



*Jimmy Hakuole gets ready to partake of some rare roast of beef at the Sunday night buffet. He was at a table with the Bill Barlows, Joe Roses and Mrs. Jimmy.*



*Houie, Stevie and Mike Bond had a meeting on the sundeck before going into their Sunday night kau kau.*

**Going Places?**

LET TRAVEL EXPERTS HANDLE ALL YOUR NEEDS

Low Cost — Personalized Guided Tour and Independent Arrangements

Call or see Juanita Ritchie at our location in Outrigger Arcade entrance.

**INTERNATIONAL TRAVEL SERVICE**

TELEPHONES: 938-691 or 506-011

Stylish Beachwear by **KAHALA SPORTSWEAR**

FOR KANES

AND WAHINES

In all sizes, shapes and colors at the Available at **CLUB BEACH SERVICES**

## HIGHLIGHTS OF OCTOBER CALENDAR

**SUNDAY**—The ever popular brunch being served 9:00-1:30 every Sunday of the year.

6:00-9:00—Buffet dinner — pleasing both to the eye and palate. Simple but impressive way to entertain your friends.

**MONDAY**—Entire club closed except snack bar.

**TUESDAY - WEDNESDAY -**

**THURSDAY - FRIDAY** — Buffet luncheon served to cater especially to the working member who *really* has only one hour for lunch. Wiki Wiki Kau Kau and so on, too.

**FRIDAY**—Happy Hour for sundown cocktails on the Hau Terrace and in the Bar. 4:30-6:30.

**SATURDAY** — Hawaiian music by Marion Diamond with your dinner. Very relaxing and conducive to good fellowship.

**SATURDAY** — 28th — Hallowe'en Costume Dinner-Dance. See next column.

## WHOO! HOO HOO

The annual Hallowe'en dinner-dance will be held again this year on the 28th of this month. You can come like in crazy rags and have yourself a real ball. Marion Diamond and her strumming and dancing gals will start off the evening at 6:00. Dinner will be served from the regular menu which Jake promises will be filled with goodies. From 9:00-12:00 Duke Heatherly's Pent House Gang will play for your dancing pleasure AND also from 9:00-12:00 cocktails will be at the Happy Hour price of 50c each. So get your reservations in early folks. There'll be a hot time at the old Club on the night of the 28th.

\* \* \*

Dr. and Mrs. Hans Zimmerman invited 300 friends to help them celebrate their 25th wedding anniversary August 28th at the Princess Kaiulani Hotel. This was a happy gathering indeed and made more so with delicious pupus, specially selected dinner and cocktails.



*In the above picture is one of the scenes from Muggy's Swimwear fashion show held during the brunch hour Sunday, September 10th. Muggy MC'd and produced the show in which 20 models displayed the latest and most fashionable swimwear. More than 200 attended the showing and happily sat through the two hours of finding out what the well dressed uahine beach goer will wear today.*





*Hauoli  
La Hanau  
Aloha  
Nui Loa*

We extend hearty greetings and "Happy Birthday and best wishes to you" to all Club members whose birthdays occur in October.

1.

Russell N. Tucker  
Paul C. MacLaughlin  
Henry Van Gieson, Jr.  
Richard L. Zieber  
Garner Anthony  
Mrs. Mary T. Bell  
Ronald K. Rima

2.

William L. Haxton  
Philip Kaahue  
Edward K. Kawanakoa  
William C. O'Rourke  
Herbert M. Richards  
A. Lester Marks, Jr.  
Mrs. George P. Yonkers  
Mrs. Marian A. Sandelin  
William J. Wood  
John T. Hjorth

3.

Robert D. Merrick  
W. K. Whittle  
Mrs. Lillie B. MacKenzie  
Dr. George L. Dobson

4.

Frank A. Alameda  
Frank Crum  
Giles G. Corey  
Mary E. Boland

5.

William H. Ewing  
Stanley H. N. Waldron  
H. Dickey Thacker  
Mrs. John G. Goessling  
Garfield King

6.

Elmer C. Jenkins  
William F. Thompson, II  
Robert Value  
Capt. Sherman W. Betts  
Mrs. Bonita L. Kohl  
Mike Roberts  
Gloria May

7.

Dr. James J. Andrade  
John H. Black  
Mrs. Eva Tarbell  
LCDR. R. O. Welander

8.

H. G. Dillingham, Jr.  
Erwin A. White  
Kristine L. Moody

9.

Paul R. Cassidy  
Betsy Church King  
Jack A. Mullin  
Edwin E. Woods  
Richard A. Park

10.

Samuel M. Fuller  
Carl E. Hanson  
W. J. Lambert  
Grandison Perry  
Mrs. J. A. Mullin  
Mrs. Robert H. Robinson  
Robert H. Mott-Smith  
Dr. Robert D. Millard  
Major William J. Mulcah  
Lucinda Sommermeier  
Stephanie Sommermeier

11.

H. R. Cooke  
Edward S. Geer  
Fred Mahoney  
Stephen S. Johnston  
James P. Johnson  
Dean A. Eyre, Jr.  
Barbara Makinney  
Edward K. McMahon

12.

James Zukerkorn  
George Q. Cannon, III  
John W. Chamberlin  
John F. Haglund, Jr.  
Mrs. Arline Miller

13.

Charles M. Peters  
Gay G. Singlehurst  
CDR. Harold S. Bottomley,  
Roger Noble Smith  
Harold Eric Russell

14.

James O'Dowda  
William E. Danford, II  
Arthur E. Jones  
Reynolds G. Burkland  
Ade Schwammel  
Susan L. Stevens  
Joel B. McNair

15.

Watson S. Clifford, III  
Edna Harrison  
Patricia J. Soule  
Mrs. Sid L. Kline  
Robert H. Fuller  
John B. O'Donnell  
Ted H. Seavey  
Thomas W. Giles

16.

Pat Kemeny  
M. R. Vail  
Dorothy D. Johnson  
Sandra Dobson  
Jack Smith

18.

Frank H. Leman  
Wallace L. Young  
James A. Richards  
Judith Ann Givens  
Charles R. Poole  
Thomas M. Bowman  
Richard E. Holtzman

19.

Walter N. Haglund  
Neal Iversen  
John C. Rosebrook  
Raymond K. Wilber  
Larry Doolittle  
David Guard  
Frank W. Rollins, Jr.

20.

Celia H. Podorean  
Mrs. Eleanor Knight  
James F. Moody  
Dr. K. C. Leebick  
Mrs. Arthur Van Dusen  
Tay W. Perry  
Hilary Ledford Eggers  
Richard Ray Wilson  
Pam Sommermeier

21.

Richard L. Burkland  
F. Peggy West  
E. R. O'Neil

22.

Robert Griffin  
William B. Harkins

Peter C. Madsen  
Mrs. G. H. W. Barnhart  
Keoki McLanahan  
Mrs. Leoti V. Krone

23.

Malcolm R. Maguire  
U. J. Rainalter  
Gwendolyn Mills  
Harold T. Power  
Nancy Vary  
Leslie V. Vary  
Sandra L. Moseley

24.

David Watumull  
James H. Reeder  
Michael A. Lemes  
Curtis W. Rich  
Clarence H. Worlds  
Kimo Godbold  
Orrin Gilbert

25.

Robert C. Allen  
Mrs. Nalani Morris  
Henry F. Davis, Jr.  
Armand L. Smith  
Mrs. Jean B. White  
Evan White

26.

William C. Capp  
Winona N. Love  
Margaret Jane Linn  
Dodd Balock  
Jimmy McMahon  
Peter W. Burkland

27.

Vincent J. Moranz  
Mrs. Robert J. K. Snider  
Keith K. Wallace  
Mrs. Violet L. Mitchell  
David Holzman  
Geraldine Pedesky  
Cornelius J. Callahan

28.

Kenneth F. Brown  
Lawrence Haneberg  
Mrs. Olive Morris  
Art Lange  
Francis J. Cooper, III  
Jean W. Baldwin

29.

Robert W. Patrick  
Mrs. Lucille B. Chaisson  
Mrs. Joyce Lewis  
Mona Reiersen  
Thomas A. Replogle, Jr.

30.

Benjamin Howell Bond, Jr.  
Mrs. Gretel R. Kepner  
Ulrich J. Rainalter, Jr.  
Victoria H. Lamb  
Mabel C. Hazen  
James E. McCormick  
Mary Lou Buese  
Mary Jane Maples

## **cock's roost** **broiler \* bar**

The informal STEAK HOUSE  
for comfortable dining  
overlooking the Market Place

FOR LUNCH—Kosher Specialties and  
Hot Carved-to-Order Sandwiches

FOR DINNER—Steak, Lobster,  
Chicken, Prime Ribs

COCKTAILS TO CROW ABOUT



INTERNATIONAL  
MARKET PLACE  
WAIKIKI

Phone 933-229

## **Colonial House Cafeteria**

*Delicious Home Cooking*

BREAKFAST — LUNCH — DINNER

THE FINEST PASTRIES IN TOWN

INTERNATIONAL MARKET PLACE  
WAIKIKI

## **the Gourmet**

SUPERB LUNCHEONS AND DINNERS  
IN AN INTIMATE ATMOSPHERE

Parking Attendant at Front Entrance

2223 KALAKAUA AVE.

PHONE 933-030



*Sprucecliff Restaurants*



## ***"The Time You Spend Could Be Your Own"***

As never before . . . people with families grown and scattered throughout the world, are finding the maintenance of the "family home" an unnecessary chore. It's time to relax, to enjoy gracious, comfortable living within the safety of a quiet residential apartment building of unique beauty. No more yard work, no more maintenance, no long commuting to the downtown area or to the fashionable shops and restaurants of Waikiki. The beach is your front yard . . . the park only across the street. Diamond Head is one view with the broad Pacific and the distant Waianae Range the other. Now . . . visit our carefully decorated finished apartments . . . then select your own studio, one bedroom, two bedroom or penthouse apartment. *Occupancy in October.*



# **Sans Souci**

**APARTMENTS**  
2877 KALAKAUA AVENUE

**FEARON-CROSS, INC.**  
REALTORS

On the Job Site • Phone 937-696

**OUTRIGGER CANOE CLUB**  
2335 Kalakaua Avenue  
Honolulu, Hawaii

MR. FRANK A. ROSS  
P. O. BOX 2627  
HONOLULU, HAWAII

BULK RATE  
U. S. POSTAGE  
**PAID**  
Honolulu, Hawaii  
PERMIT No. 174