

SCOREBOARD

CALENDAR

Today
Basketball
WAC: New Mexico vs. University of Hawaii, 7:35 p.m., Blaisdell Arena

Tomorrow
Baseball
Cahu Sr. AIA: McCully vs. Waipahoia at Ala Wai Field, 10 a.m. Sheridan vs. Waipahoia at Ala Wai Field. Ewa vs. Manoa at Hana L Orange Field. Kaneohe vs. Moanalua at Castle H S Field. Aiea vs. Waialae at Aiea Field, 1 p.m.

Running
Priory Fun Run: 5 miles, 7 a.m., Manoa Recreation Center

PADDLING

World Sprints

At Auckland, New Zealand

Men
O-1, 500 meters: P. Bernadino (Tah) 2:18.19, 18 seconds; S. Kevin Oda (Haw), 2:29.58; D. David Beck (Haw), 2:29.55; O-6, 500: 1 Teva (Tah) 0:6, 3:00.0; 1 Teva (Tah) 14:43.36; S. Hawaii, 15:04.91

Women
O-1, 500: K. Magni (Tah) 0:6, 500: 1 FAAA #1 (Tah) 0:6, 1:00.0; 1 Pirae (Tah) 4:38.16; 6. Hawaii, 4:33.17; O-12, 500: 1 FAAA (Tah) 14:43.36

Men
O-1, 500: W. Hekumu (Tah) 0:6, 1:00.0; 1 Tare Tahiti #1 (Tah) 0:12, 500: 1 Tare Tahiti 2:08.71; 4. Hawaii, 2:22.23

Women
O-1, 500: N. Clark (Tah) 0:6, 500: 1 Baloa (Aust) 0:6, 3:00.0; 1 Baloa (Aust) 1:16.75; 4.9. Waikiki Surf Club (Haw) 17:38.03; O-12, 500: 1 Tahiti #2 2:20.8; 2 Tahiti #1 2:22.14; 3. Outrigger Leeward 2:23.92 (Malia Kamisugi, Cecelia Sheehan, Diane Wilbur, Cathie Maurer, Eliza Wilcox, Darcie Wilcox, Jackie Muller, Noelle D'Embeau, Malia May, Emily Bohn, Nau Kamalii, Reil Sunn)

Men
O-1, 500: P. P. Tahiti (Tah) 0:6, 500: 1 Iniani (Tah) 2:23.81; 7. Outrigger (Haw), 2:30.68; O-6, 1000: P. Iniani (Tah) 5:30.19; 4. Outrigger (Haw), 5:41.06; O-12, 500: 1 Tahiti #2 2:45.99; 2 Tahiti #1 2:27.01; 3. Waikiki Surf Healan (Haw) 2:28.57 (Maly Alvarrez, Elizabeth Chun, Heidi Heine, Christine Jahling, Kristi Mossman, Andrea Thomas, Maliss Tongg, Terisa Garrett, Stacey Dickson, Lesley Lauka, Malia Ford, Chenelle Jenking)

Mastheads
O-1, 500: S. Auger (Tah) 2:59.65; 5. Rosie Lum (Haw), 3:19.22; 60—Luana Fritch (Haw), finished 4th but in wrong lane

Women
O-6, 1000: 1 Tahiti Nu (Tah), 5:19.75; 2. San Diego (Cal), 5. Waikiki Surf Club #1 (Haw), 6:08.14 (Bernie Gay, Molly Cates, Luana Fritch, Nancy Perry, Sue Pang, Rosie Lum), 5. Maui (Haw), 5:36.54; 6. Waikiki Surf #2 (Haw), 6:04.29; 7. Healan (Haw), 6:06.14; O-12, 500: 1. Waikiki Surf Hawaiian (Haw), 2:25.63 (B. Gay, M. Cates, L. Fritch, N. Perry, S. Pang, R. Lum, M. McGee, Mary Akiona, Jennifer Petrus, Lea Gidens, Kathleen Pifer, Vanessa Weiss), 2

MidWeek Excursions

A Science Fair, A Memorial Quilt And More

WEDNESDAY, January 24

★ **The Entertainer.** Academy Theatre, 7:30 p.m., \$3. Laurence Olivier portrays a third-rate vaudeville actor whose cynical view of life is matched only by his pettiness and egomania. (538-1006)

★ **Retired Officers' Dinner.** Hale Koa Hotel, 6:30 p.m., \$15. State public health director Dr. John Lewin is the main speaker. (263-6340)

★ **Hospice Volunteer Orientation.** Hospice Hawaii office, 310 Paokalani, Room 205, 7 p.m., free. Learn about the training program for those who wish to provide comfort and care to the terminally ill. (924-9255)

★ **Science-Fair Exhibition.** St. John Vianney Parish Hall, 940 Keolu Dr., 6:30 p.m., free. Students from St. John Vianney Parish School display their projects. (259-7404)

★ **Christian Family Relationship Workshop.** Christ Lutheran Church, 95-1361 Meheula Parkway, Mililani, 7:30 p.m., freewill offering. A session for high-school students and adults. (823-9223)

★ **Successful Stress.** Kaiser Permanente Honolulu Clinic, 1010 Pensacola St., first floor conference room, 7 p.m., \$5.50 and \$6.25. Learn to identify stresses and to use appropriate survival techniques to maintain balance in your life. (Register: 529-2270)

★ **Computers For Beginners.** Leeward Community College, 9 a.m., free. A senior-citizens program. Classes in drawing, flower arrangement, music and more also are available. (Register: 455-0477)

★ **Honolulu Boy-Choir Audition.** 1660 S. Beretania St., times vary, free. Boys in, second through sixth grades; no need to have any previous experience. Call for recorded information. (395-8888)

THURSDAY, January 25

★ **AIDS Memorial Quilt.** Blaisdell Exhibition Hall, 7:30 p.m., free. Eight hundred panels from the National AIDS Memorial Quilt are on display for individual awareness and funds for individuals with AIDS. Open Friday and Saturday from 10 a.m.-9 p.m. and Sunday from 10 a.m.-5 p.m. (924-9255)

★ **"A Golden Age Of Painting."** Honolulu Academy of Arts, 10 a.m.-4:30 p.m., free. A major exhibition of 16th and 17th century Dutch, Flemish and German paintings. (538-1006)

★ **Afterschool Film.** Mililani Library, 2:30 p.m., free. Children enjoy *Bird Island Anatole*. (625-1388)

★ **Foot - Reflexology Lecture.** Waikiki-Kapahulu Library, 7-8:30 p.m., free. A lecture/demonstration on the natural healing techniques used to relax and heal yourself and others. Sponsored by the Reflexology Center of Honolulu. (739-5111)

★ **"Living With Cancer."** The Queen's Medical Center, 6:30 p.m., free. A down-to-earth series of discussions on adjusting to cancer in daily living for patients, families and friends. (Register: 547-4660)

★ **Brown-Bag Biography.** UH, Biography Cottage, mauka side of Klum Gym, noon, free. Associate professor of English Alan MacGregor discusses "Lords of the Ascendant: Mercantile Biography in Irving's *Astoria*." (943-0484)

★ **Stepping Out.** Manoa Valley Theatre, 8 p.m., \$13. A lighthearted British comedy about people overcoming their inhibitions to tap dance. Plays through Sunday. (988-6131)

FRIDAY, January 26

★ **Art Exhibition.** Honolulu Academy of Arts, 10 a.m.-4:30 p.m., free. Watercolors by sculptor Robert Stackhouse are on display in the second-floor galleries. (538-1006)

★ **Mozart Festival, Part II.** Mamiya Theatre, 8 p.m., \$8 and \$10. Pianists Paul and Kaoru Lyddon; violinist Robert Hamilton and violist William Bailey perform with the Hawaii Chamber Orchestra. The comic opera *The Impresario* is also presented. (734-0397)

★ **War Requiem.** Academy Theatre, 7:30 p.m., \$3. A cinematic visualization of Benjamin Britten's celebrated *Oratorio*. Showing Saturday and Monday at the same time. (538-1006)

★ **Art Exhibition.** Bakkus Gallery 928 Nuuanu Ave., 10 a.m.-4:30 p.m., free. Mayra Vega displays sepia pen-and-ink drawings of Hawaiians and miniature watercolors of Hawaii. (528-4677)

★ **Cosmic Comic.** Unity Church of Hawaii, 3608 Diamond Head Circle, 7-9 p.m., free. Comedian Swami Beyondananda, the "Yogi from Muskogee," features the lighter side of enlightenment. (735-4436)

★ **Hunter-Education Program.** Nimitz Business Center, 1130 N. Nimitz Hwy., suite B-223, 5:45-10 p.m., free. Learn firearms and archery safety, first aid, ethics, responsibility and more. Class continues on Saturday. (Register: 543-2710)

★ **Foot Notes On Reflexology.** Windward Community College, 9:30 a.m., \$3. A seniors class discussing the

advantages of foot reflexology. (Register: 235-7434)

★ **Tea.** The Lanai, 600 Pensacola St., Kapiolani Community College campus, 8 p.m., \$3-\$6. Five Japanese war-brides cope with life in Kansas. A Kumu Kahua production. (737-4161)

★ **Fern Culture.** Marugame Nursery, 45-288-5 William Henry Rd., Kaneohe, 10 a.m., \$3 and \$5. Pat Sumida lectures about growing ferns and shows the different varieties. (Register: 988-3177)

SATURDAY, January 27

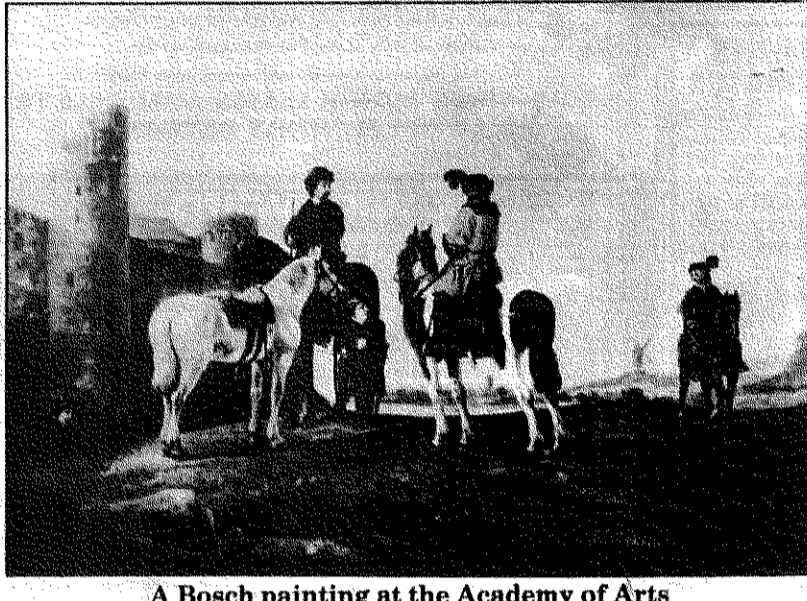
★ **Opera Preview.** Academy The-

aters and popular themes in 19th century music. (531-0481)

★ **Conservation Hike.** Hawaii Nature Center, 8:30 a.m., free. Help protect Hawaii's natural history by removing alien plant species from the trails as you hike around Makiki Valley. (973-0100)

★ **Cherry Blossom Festival.** Wahianwa Hanganji Social Hall, 1067 California Ave., 7 p.m., \$3. Okinawan dancing, karaoke singing, taiko drum performance and more are featured. (622-4320)

★ **Guns.** Leeward Community College Theatre, 7:30 p.m., \$4 and \$6. A futuristic play exploring the mystique



A Bosh painting at the Academy of Arts

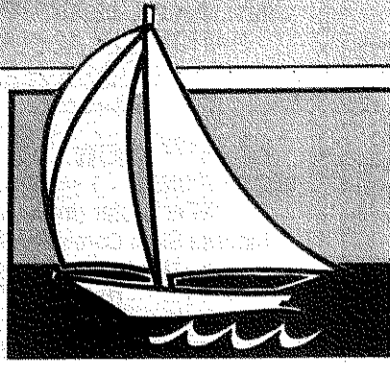
of guns through the eyes of the guns. (839-9885)

★ **Makahiki Magic.** Bishop Museum, Hall of Discovery, 10 a.m. and 12:30 p.m., \$7.50 and \$10. Children 6-11 discover some of the games ancient Hawaiians played and learn to play them also. (Register: 847-4149)

★ **Botanic Gardens Volunteer.** Hoomaluhia park, 9 a.m.-noon, free. Learn about the park's volunteer program and how you can contribute to its success. (Register: 235-6636)

★ **Kayak Race.** Hawaii Kai to Outrigger Hotel, 9 a.m., \$10. Registration is on the day of the race with the race beginning at 10 a.m. Sponsored by the Outrigger Canoe Club. (395-1400)

★ **Film-And-Video-Care Workshop.** Bishop Museum, 1-3 p.m., \$10 and \$12.50. Learn the various types of



A sailboat on the water

SUNDAY, January 28

★ **Bike Ride.** Moose McGillycuddy's, University Avenue, 7:30 a.m., free. Tour around Diamond Head before heading up St. Louis Heights Super-low gears are helpful. Check brakes thoroughly. (988-7175)

★ **Art Lecture.** Honolulu Academy of Arts, 2 p.m., \$3-\$4. A lecture and slide presentation on "A Golden Age of Painting: The Blaffer Foundation" (538-1006)

★ **Ke Aloha Nui.** Hilton Hawaiian Village beach, 10:30 a.m., free. An interdenominational service featuring gospel artists Laurie Boucier and Jessica Wells. (923-3137)

★ **Quilt-Smoking Club.** Kilauea Recreation Center, 4109 Kilauea Ave., 2 p.m., free. Receive helpful guidance in learning the skills required to stop smoking. (944-0804)

★ **Nature Walk.** Hoomaluhia park, 1 p.m., free. Bring rain gear, insect repellent, lunch and walking shoes for this 2-mile guided walk around the park. (Register: 235-6636)

★ **Island Dance Festival.** Mamiya Theatre, 8 p.m., \$3-\$9. Kumu hula Robert Cazimero and his all-male hula halau, Halau Na Kamalei, perform. (537-2152)

★ **Band concert.** Kawaiaha'o Church, 957 Punchbowl St., 4 p.m., free. The Luther College Concert Band performs religious, classical and contemporary works. (522-1333)

MONDAY, January 29

★ **Figure-Drawing Class.** Kapiolani Community College, Diamond Head campus, Koa 204, 7-9:30 p.m., free. Develop your drawing skills. There is a small fee for the models. (734-9211)

★ **Honolulu Scrabble Club.** Waikiki-Kapahulu Library, 9:30 a.m., free. Improve your word skills and make new friends. (923-60-3)

★ **Ballroom-Dance Lessons.** Central Union Church, 7-9 p.m., \$15. New classes beginning all the time. The cost covers eight lessons. (946-3291)

★ **Horn Recital.** Pohai Nani Care Center, 45-090 Namoku St., Kaneohe, 7:15 p.m., free. Hornist Karl Plutch and pianist David Inoue perform works by Forster, Strauss, Bujanovsky and Hindemith. (531-2640)

★ **Business Taxes.** Windward Community College, 8:30 p.m., free. A class which covers basic tax information for those who operate small businesses. Learn ways to raise start-up money. (Register: 235-7433)

★ **Feminist Theology.** Unitarian Gallery, 2500 Pali Hwy., 7 p.m., \$15 and \$20. "Cakes for the Queen of Heaven" is a program, developed for women by the Rev. Shirley Ranck, which explores and reclaims female religious history and its meaning for their lives. (595-4047)

★ **Blood Drive.** Windward Community College, Waipa Lounge, 8 a.m.-3:30 p.m., free. A 45-minute procedure conducted by the Blood Bank of Hawaii. (235-7434)

★ **Implements of Stone.** Kapiolani Community College, Iiahi 105, 7-9 p.m., \$16. A two-part lecture to investigate the cultural uses and geological origins of Hawaiian rocks. (Register: 734-9211)

★ **Organ Recital.** Kawaiaha'o Church, 957 Punchbowl St., 7:30 p.m., free. Organist Bruce Wheatcroft, known for his extraordinary ability, performs. (522-1333)

TUESDAY, January 30

★ **Love Lessons.** First Unitarian Church of Honolulu, 2500 Pali Hwy., 7 p.m., free. Robert Fraser discusses "Not Being a Martyr for Love," part of a series of discussions to explore the different aspects of love. (595-4047)

★ **La Lectrice.** Academy Theatre, 7:30 p.m., \$3. A French film starring Miou-Miou as a young woman who advertises her services as a professional reader. (538-1006)

★ **Hawaiian Heiau.** UH, Kuykendall 303, 7-9 p.m., \$18. An introduction to the heiau in Hawaiian culture, including the relationship of the gods to a particular heiau. (Register: 948-8244)

★ **Fellowship Breakfast.** Spaghettini Spaghettini, 7:30 a.m., \$2. An interdenominational meeting featuring gospel artist Laurie Boucier. (923-3137)

★ **Healthy-Back Class.** Kaiser Permanente Honolulu Clinic, 7 p.m., \$7.50 and \$10. A two-hour class covering the care and use of the back to avoid injury. (Register: 529-2270)

★ **CPR Class.** Kuakini Medical Center, PB-5 classroom, 5-8 p.m., \$15. The class covers heart disease, recognizing a heart attack, preventing disease and one-person cardiopulmonary resuscitation. (Register: 547-9252)

OPEN DOOR POLICY

I always enjoy Mike Baughman's articles, as I can easily relate to them. However, in his story "The Game" in the November issue, he trips and makes one major error.

The error, if not corrected, places a tint on one of Hawaii's greatest beach clubs and contributors to Hawaii's water sports... the Outrigger Canoe Club.

Baughman relates that in the late '40s he took an Asian school friend to the Outrigger Club and he was denied admittance because of his friend's race. Wrong! Baughman was a junior member at the time and they were not allowed to bring guests into the club. Only senior members were allowed to sign in guests.

I have been a member of the Outrigger Canoe Club since 1939, and I am one of its past presidents, and the club never denied the use of the club to one because of race, creed or color. There has never been a regulation nor unwritten rule that even hints of this possibility.

RON G. SORRELL
Former beach boy/surfer, presently ski bum
Salt Lake City, Utah

Earth Day talks take their topics from outer space



HAWAII
By Dave Donnelly

WHEN Earth Day is celebrated Feb. 28 at the East-West Center, speakers will range from "The Right Stuff" to "The Light Stuff." Namely, one of the seven original Mercury astronauts, Scott Carpenter, to the creator of Jose Jimenez (Jose the Astronaut), Bill Dana. Jose became the mascot of the Mercury crew members, so much so that the first words spoken from the NASA headquarters to an American entering space were, "Okay, Jose, you're on your way." The East-West Center program is entitled, "A Guide to Saving Planet Earth," something Dana has been active in with his Eco-lo/jest cartoons...

MAY Day is not just Lei Day in Hawaii, it's also "Say Hey" day for Buzz's Steak house owner Bobbie Lou Schneider. That's when she ties the knot at the Royal

Hawaiian Hotel with Stan Yeackel, who lives on Bainbridge Island in Washington. No problem, they plan to commute every six weeks or so with Bobbie Lou's daughter, Kaleo, operating the Buzz's restaurants while she's away. Only about 40 guests will be at the small wedding, about half of them — 19 at last count — acting as bridesmaids in white dresses and haku leis...

MAYBE there's a marriage bug going around. Shortly after he was named new general manager of KIKI, Lee Coleman popped the question to Cindy Kobayashi at La Mer. The two have only been going together for eight years. No date set yet, but it'll be sometime this year... It was a big day for real estate woman Penny Bradley at her birthday party at Nicholas

Nickolas the other day. Fifty guests were on hand and a wag suggests the number wasn't chosen randomly... Cora Wittingham was mulling what to have for lunch while driving down the street recently, and decided to forgo it altogether when she found herself behind a car with the license plate "82MUCH"... Then there's the car of Hawaiian Open honcho Chester Kahapea. His license plate reads "HWNOPN"...

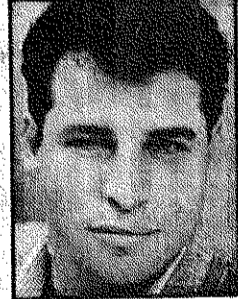
Another bites the dust

CONFIRMED bachelor Greg Sprecher has suddenly become unconfirmed. He married Becky Norris recently at the Outrigger Canoe Club and the two are now honeymooning. His partner in Ulrich & Associates Realty, Steve Ulrich, threw quite a surprise bachelor party. As best man, Ulrich flew the groom-to-be to Las Vegas for a pre-wedding weekend where frat brothers from the 1970s showed up to help celebrate the occasion. There must be something in the air!...

PEOPLE watching "Family Feud" on K-5 TV Monday night were rudely treated to a string of commercials and promos just as the host was preparing to ask the



Bill Dana



Lee Coleman

final question on a long-running grand prize "Feud" for nearly \$100,000. When the commercials finally concluded, the game was over, the money awarded to one of the families and the host was saying "Bye, bye." I'd like to think this isn't a common occurrence... Here's something to look forward to: The Sunset Grill is holding a party Feb. 26 wherein they're "bringing San Francisco to Hawaii." Featured will be Anchor Steam on draft, Irish coffee and Fisherman's Wharf foods... Stopping by the location shooting of "Jake and the Fatman" near the

King Kamehameha statue the other day was "Magnum, P.I." himself, Tom Selleck. He just wanted to wish them well. Nice gesture. And, you can be sure, Selleck dropped by the Black Orchid, where he's a limited partner but an unlimited attraction among the clientele...

Solving a conundrum

THE oldest joke in Hawaii has to be the one about the tourist getting off a boat and asking the first guy he sees if it's pronounced Hawaii or Havaii. "Havaii," the man replies. "Thanks," says the tourist, to which the guy replies, "You're welcome." Another conundrum is whether the name of the Big Isle town is Waimea or Kamuela. You won't get a definitive answer from the Waimea Gazette, despite its name. Side by side on one page of the current issue are ads for "Parker Square in Waimea" and "Parker Square — Kamuela." The Gazette uses the name Waimea in its masthead, but lists its postal address as "P.O. Box 1627, Kamuela, HI."

Dave Donnelly has been writing on happenings in Hawaii for the Star-Bulletin since 1968. His columns run Monday through Friday.