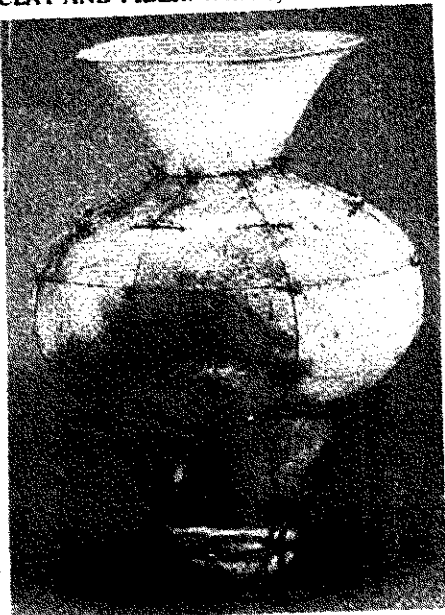


WHAT'S HAPPENING

in general

RECENT WORKS by Howard Farrant, The Contemporary Museum, Cafe, thru October 2.
CRAFTS FROM BALI: Waterfall Gallery, thru September 30.
BATIK PAINTINGS by Penny Kaiman-Rayner, Croissantierie, September 1-27.
Opening reception, Saturday, September 9, 4-6 pm.
INDIGENOUS PEOPLES CALLED AMERICAN INDIAN: Works by G.E. "Jody" Shickland, The Gallery at The First Unitarian Church of Honolulu, September 1-October 2.
Opening reception September 7, 6-9 pm. Meet the Artist Coffee Hour, September 17, noon-1 pm.
CLAY AND FIBER: Works by Mika McCann,



Elisa Salmi-Saslaw, and Mandell Andres, Ramsay Chinatown Gallery, September 4-29.
Opening reception, Tuesday, September 5, 5-7 pm.
BITS AND PIECES by Bruce Hopper, Ramsay Chinatown Gallery, September 4-29.
KALAUAPA: A Portrait, photo exhibit by Wayne Levin, Bishop Museum, Jabulka Pavilion, thru September 15.
CHINESE FAMILY EXHIBIT: The Tradition Years 1900-1940. Photos and artifacts of the period. Bishop Museum, Kahili Room, thru October 31.
CLARENCE LEE: "Chinese Artists off Hawaii" will show Symphony covers designed by the artist. Honolulu's Contemporary Museum, thru September 18.
WORKS by Jennifer Bartlett, Honolulu Advertiser Gallery, thru September 6.
BISHOP MUSEUM PLANETARIUM: "All Systems Go," Monday-Saturday, 2 pm, Friday & Saturday, 7 pm. "Journey by Starlight," Monday-Saturday, 11 am. Call 848-4136. \$2.50/1.25 or included with general admission to museum.
HAWAIIAN CALABASHES AND BOWLS from museum and private collections, Academy of Arts Focus Gallery, thru September 10.
NA PANIOLA O HAWAII: Traveling exhibit celebrating paniolo folk art and the history of ranching. Honolulu Hale, 3rd floor, thru August 30.
THE SEARCH FOR ALEXANDER: Poster panel exhibit on the Hellenic world during the age of Alexander. Honolulu Hale, Lane Gallery, thru August 30.
RURAL GLIMPSES: Works by Helen Iaea, Ramsay Downtown Gallery, thru September 1.
ABSTRACTIONS OF WAIKIKI: Works by Patsy Ford, Ramsay Chinatown Gallery, thru September 1.
FORTRESS COLLECTION OF PACIFIC ART: Selections on display. Academy of Arts of the Pacific, the Americas and MOANALUA GARDENS FOUNDATION COLLECTION of works by master Hawaiian artists, Pauahi Tower Gallery, Bishop Square, thru September 1.
WATERCOLORS by Michael B. Pearson, Bakkus Gallery of Fine Arts & Fashions, thru September 9.
TAN YI Part I. In celebration of the Chinese Bicentennial, The Contemporary Museum-all 5 galleries, thru September 25.
MEDITATIONS THROUGH DRAWING: Works by Michelle de Alencar, Che Pasta, thru October 28.
WORKS by artist/sculptor Gregory Charles Craft, Cafe Che Pasta, thru October 29.
NEW CHINESE PAINTINGS by Huang Ge Seng, Queen's Medical Center Main Lobby, thru September 17.
INFANT CPR CLASSES: Kapiolani Medical Center—Mondays & Fridays, 1:30-3 pm and

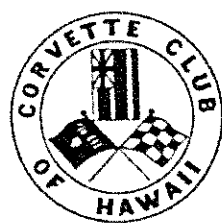
Tuesdays & Wednesdays, 6-7:30 pm. Call 947-8380, \$10.
WAIKIKI COMMUNITY CENTER: Special free events all week include Koffee Klatsch, Shiatzu, Karate and Tai Chi lessons, Mahjong games and lessons, ballroom dancing, big band music sessions. Call for information 923-1802.
AIDS TESTING: Free, anonymous counseling and testing. Honolulu Medical Group, call 537-2211; Diamond Head Health Center, call 735-5303; Queen Emma Clinic, call 735-5303; UH Student Health Center, call 948-8965; and Lanakila Health Center, call 735-5303. Or call AIDS Hotline at 922-1313.
WALKING TOURS OF HONOLULU: Various sights and various themes, call 734-9211 for details. Sponsored by Kapiolani Community College's Interpret Hawaii, Hawaii Maritime Center, Mission Houses Museum.
CHINATOWN WALKING TOURS: Sponsored by the Hawaii Heritage Center, Wednesdays and Fridays, 9:30 am. Call 521-2749, \$4/\$3.
SCENIC AND HISTORIC WALKING TOURS: Diamond Head, every Saturday, 9 am; Historic Waikiki Beach Stroll, 9 am every Friday; Nu'uau Valley Walking Adventure, 9 am 1 pm every Friday. Call 944-0804 for details. Sponsored by The Clean Air Team.
ARTHRITIS SUPPORT GROUPS: Meeting weekly—1st Monday, Wesley United Methodist Church, 11 am; 2nd Wednesday, McCully Library, 6 pm; 3rd Thursday, Castle Medical Center, 6 pm; 4th Saturday, Central Union Church, 1 pm. Call 523-7361.

in specific

MONDAY 28 **BLOOD BANK OF HAWAII MOBILE UNIT:** State Department of Labor, Keelokalani Building, 8-11 am, call 845-9966.
HPC SEMINAR: The Adult College Student, Hawaii Pacific College building, 12:15 pm, call 544-0265, free.
CHAMBER MUSIC HAWAII: New Music Concert features Claire Hazard and Evelyn Zuckerman, Academy Theatre, 8 pm, call 261-4290.
HEART DISEASE AND CANCER PREVENTION SEMINAR: The Castle Center for Health Promotion, 7 pm. Call 235-8737, free.
TUESDAY 29 **HPC SEMINAR:** Cancer Opportunities in Accounting, Hawaii Pacific College building, 12:15 pm, call 544-0248, free.
STRESS WITHOUT DISTRESS: How to Cope, Kuakini Health System, 5-7 pm. Call 547-9252, \$10.
FILM: The Suitors, Academy Theatre, 7:30 pm. Also on August 30. Tickets \$3.
HAWAII OPERA THEATRE AUDITIONS: First Presbyterian Church, thru August 30, 5-9 pm. Call 521-6537.
INTERPRET HAWAII WORKSHOP: Oahu at War, Kapiolani Community College's Diamond Head campus, 7 pm. Call 734-9211, \$10.
PUBLIC LECTURE: How to Thwart a Burglary, Kuakini's Hale Puhama Mau auditorium, 7 pm. Call 547-9827, free.
DRIVING TEST: KGBB-TV Channel 9, 9-10 pm, pick up free test booklet from any PRI Gas Express station.
WEDNESDAY 30 **BOOK SALE:** Sponsored by the Friends of Aina Haina Library, 9 am-6 pm thru September 2.
HPC SEMINAR: The Master of Science in Information Systems, Hawaii Pacific College building, 12:15 pm. Call 544-0279, free.
SENIOR LECTURE SERIES: Care of the Aging Skin, Honolulu Medical Group's Downtown Clinic, Doctor's Lounge, 1-2 pm. Call 537-2211, free.
EAST-WEST CENTER TOUR: Sponsored by Friends of the East West Center, 1:30 pm. Call 944-7691, free.
AT&T WILDEST SHOW IN TOWN: Kapena at the Honolulu Zoo, 6-7 pm. Gates open 4:30 pm, free.
CPR COURSE A: The Queen's Medical Center, 6-10 pm. Call 547-4731, \$15.
POWERFUL WOMEN OF HAWAII INTERCHANGE: Self-Identity Through Ho'oponopono, McCully/Moiliili Library, 7-9 pm. Call 842-3750, free.
THURSDAY 31 **CHAMBER OF COMMERCE OF HAWAII:** Good Morning Hawaii breakfast program, 7-8:30 am, Pacific Club, \$10.

FIRST AID CLASS: Kuakini Medical Center, 8 am-4:30 pm. Call 547-9252, \$20.
HPC SEMINAR: Marketing, Hawaii Pacific College building, 12:15 pm. Call 544-0248, free.
FILM: Gone With The Wind, Academy Theatre, 1 & 7:30 pm. Also on September 1, 7:30 pm. Tickets \$4/3.
HONOLULU SYMPHONY 1989 Free Family Concert: Central Union Church, 7 pm. Call 942-2200.

FRIDAY 1 **TAIPEI MUNICIPAL TEACHERS' COLLEGE ALUMNI CHORUS:** Mamiya Theatre, 7-9:30 pm thru September 3. Call 536-9539. A Chinese Bicentennial event.
U.S.-CHINA PEOPLES FRIENDSHIP ASSOCIATION NATIONAL CONVENTION: thru September 4. Call 949-8327.
BLOOD BANK OF HAWAII MOBILE UNIT: Office of Goodwill Anderson Quinn and Stifel, 7 am-2:30 pm. Call 845-9966.
HPC SEMINAR: Intended for people who have an interest in the management side of the travel industry, Hawaii Pacific College building, 12:15 pm. Call 544-0248, free.
FILM: The Real World of Bali, Tenney Theatre, 7:30 pm. Tickets \$4/2, call 395-1413.
WINE, CHEESE, AND ALL THAT JAZZ: Nueva Vida at Ward Centre, 5-7 pm, free.
TRADITIONAL HEALING CLASS for senior citizens, Tai Chi and Yoga for Beginners, Windward Community College, 9:30-11:30 am. Call 235-7434, \$3.
MAYOR'S ALOHA FRIDAY MUSIC BREAK: Polynesian Cultural Center Brass Band, Tamarind Park at Bishop Square, noon, free.
TRIBUTE TO KING DAVID KALAKAUA: Hilton Hawaiian Village, 6:30 pm march; 7 pm torchlighting ceremony; and 8 pm fireworks. Call 949-4321, extension 70190, free.
FILM: Samurai, Part III, Kapiolani Community College's Maile auditorium, 7:30 pm. Call 734-9211, \$2.50.
CORVETTES IN PARADISE: Annual Corvette Club of Hawaii Car Show, Sheraton



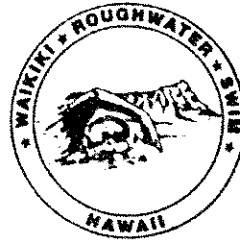
Makaha Resort, thru September 4. Call 949-8778.

SATURDAY 2 **HAWAII BICYCLING LEAGUE:** Makapu'u Shave Ice Ride, 9 am, Kapiolani Park, call 988-7175.
HAWAIIAN TRAIL AND MOUNTAIN CLUB CAMPOUT: Kawaiulu, thru September 4. Call 488-1161.
MOON PRESSURE/DIABETES SCREENING: The Queen Emma Clinic, 8:30-11:30 am, free.
PLANT AND CRAFT SALE: Outdoor Circle and Arboretum Foundation's second annual, at Waimea Falls Park's main lawn, 10 am-4 pm. Call 638-8655.
FAMILY NATURE WALK: Ho'omaluhia Botanic Garden, 10 am. Also on Sunday, 12:30 pm. Call 235-6636, free.
BOWLING COUNCIL OF HAWAII: Information booth for National Bowling Week, Pearlridge Phase II, 10 am-5 pm. Also on Sunday.
BISHOP MUSEUM FIELD TRIP: 'Aiea Loop Trail Hike, 1:30-5:30 pm. Call 948-4149.
VOLLEYBALL: Coors Life/Kauai Lagoons Beach Volleyball Classic, Westin Kauai, thru Sunday. Call 536-0606.
FILM: The Brave Little Toaster, Academy Theatre, 7:30 pm. Also on September 3, 4 pm. Tickets \$3/\$1.50.
HONOLULU SYMPHONY presents Starlight "Pops" Concert celebrating the 20th anniversary season of the Society of Seven, Waikiki Shell, 7:30 pm. Call 537-6191.

SUNDAY 3 **BISHOP MUSEUM FAMILY SUNDAY:** Kamaaina Family Sunday, 9 am-5 pm. Call 847-3511, free.
CATHOLIC FRENCH SPEAKING MASS: St. Stephen Church, 11:30 am. Call 625-7300.
HAWAIIAN TRAIL AND MOUNTAIN CLUB: Laie Trail Clearing, call 373-1525/Kawaiulu hike, 8 am, call 235-8330.
HAWAII BICYCLING LEAGUE: Do-Anything Ride, 9 am Kapiolani Park. Call 988-7175.

SUNDAY JAZZ FESTIVAL: Kapiolani Park bandstand, noon-6 pm, free.
CHEVY'S IN PARADISE CAR SHOW: Ft. DeRussy, 9 am-1 pm, sponsored by the Hawaii Federation of Chevy Owners. Call John at 625-6939.

MONDAY 4 **HAWAII BICYCLING LEAGUE:** Labor Day Ride, 8 am, Manoa. Call 988-7175.
WAIKIKI ROUGHWATER SWIM: 20th



annual, San Souci Beach, 9 am. Call 255-5382.
HOLIDAY GUIDED WALK: Ho'omaluhia Botanic Garden, 10 am. Call 235-6636, free.
JAZZ JAM PICNIC: Queens Surf Pavilion, 2-5 pm, sponsored by Jazz Pacific. Call 737-2717, free.

TUESDAY 5 **MOVIE:** Red Dust, Waikiki Community Center, noon 2 pm. Call 923-1802, \$1 donation.
FILM: Crusoe, Academy Theatre, 7:30 pm. Also on September 6. Tickets \$3.

MEETINGS

28 **Surf News Network** monthly meeting, Outrigger Canoe Club, guest speakers welcome, 6 pm. Call 538-1961.

29 **MENSA** weekly luncheon, Honolulu Press Club, noon. Call 523-1222.

30 **Downtown Business Associates Toastmasters**, weekly meeting, 28th floor, Pacific Tower at Bishop Square, noon-1 pm. Call Mike Moore at 521-2341.
The Network, weekly meetings: Denny's in Pearlridge Center, Aiea; Yum Yum Tree, Kailua; Horatios in Ward Warehouse, 7-8:30 am. Call 942-5626.
MENSA, Wednesday Night Social, Yum Yum Tree in Ward Center, 7-9 pm. Call Anthony Godshall, beeper #576-3393.

31 **The Network**, weekly meeting, Honolulu Club, 7-8:30 am, call 942-5626, \$4.
Hawaii Chapter of American Statistical Association monthly luncheon meeting, with the Hawaii Economic Association, topic: Economic Statistics for Hawaii/Paul Brewbaker (moderator), Plaza Club, 11:30 am. Call 537-8269.
Hawaii Society of Hospital Marketing and Public Relations monthly breakfast meeting, topic: Media Relations from a Television Reporter's Point of View/Denby Fawcett, Kapiolani Medical Center for Women and Children Executive Dining Room, 8 am. Call 973-3009.

1 **Downtown Business Council** weekly meeting, The Quiet Corner, 8:30 am. Call 521-5788.
Honolulu Board of Realtors general membership and annual meeting, topic: What's Ahead-Boom or Bust? Bert Dohmen, Hilton Hawaiian Village, noon, call 538-3641.

HAWAII CLIPPING SERVICE
P.O. Box 10242
Honolulu, Hawaii 96816
PHONE: 734-8124
Victoria Custer Elaine Stroup
WEST HAWAII TODAY
SEP 1 1989

Queen Liliuokalani canoe race attracts more than 100 crews

Clubs from all over the Pacific are gathering in Kailua-Kona to compete in the two-day Queen Liliuokalani Long-Distance Canoe Race, which gets under way tomorrow at 8 a.m. at Kailua Bay.

The annual event, sponsored by the Kai Opua Canoe Club, is the most popular long-distance affair in the state. A total of 58 men's teams and 45 wahine crews have already entered,

Paddling

and more could enter by race-time tomorrow.

Moku O Hawaii squads will host crews from all major Hawaiian Islands, from Tahiti and from California.

Tomorrow's event is an 18-mile affair which begins with the wahines paddling from Kailua to Honanau. From Honanau, the men will return to

Kailua via the same route.

On Sunday, the spectacular double hull canoe event begins at Kailua Bay at 9 a.m. with the wahines and ends six miles later at Keauhou Bay. Again, the men will take over and return to Kailua to complete the event.

The defending champions are the Outrigger Canoe Club for the men and the Healani for the women.

HAWAII CLIPPING SERVICE
P.O. Box 10242
Honolulu, Hawaii 96816
PHONE: 734-8124
Victoria Custer Elaine Stroup
HONOLULU STAR BULLETIN
SEP 4 1989

SWIMMING



By Craig T. Kojima, Star-Bulletin

Swimmers prepare for the start of the Roughwater Swim in Waikiki today.

Australians win Roughwater

By Jack Wyatt
Special to the Star-Bulletin

Australians won the Waikiki Roughwater Swim today.

Darran Turner, 23, of Sydney, Australia, won in 50:15, edging by one second Sean Murphy, 25, of the Olympic Club of San Francisco.

The first woman to finish was Bronwyn Burns, 17, of Fairfield, Australia. Her time was 54:19.

Honolulu's Rick Heltzel set the men's course mark in 1984, 43:47. Pearl City's Nadine Takai set the woman's record last year, 46:55.

Local swimmers make up 80 percent of the field. The rest come mostly from Australia, Canada and the mainland.

John Cater, 57, a Honolulu attorney, took in today's race, making him the only swimmer to have competed in all 20.

"Like the name implies, the '85 Roughwater was the roughest race I ever finished and I've swum them all," said Cater. "The current in '85 swim ran so strong against me that I would stroke and kick furiously for minutes and still not make headway. There were times

that I even lost ground."

Due to the adverse current hundreds of exhausted swimmers, many found treading water or clinging to buoys, were plucked from the sea and taken to shore by rescuers in escort boats.

"I have to knock on wood but... we've never lost a person (to a drowning)," race official Terri Frank said.

Today's race was patrolled by volunteers aboard paddle boards and boats.

"There's not another single ocean swim that's bigger in terms of participation. And they're not another event that stresses safety more," race director Jim Anderson said.

Today's swim drew 1,300 people, from youngsters in age-group programs to seniors, 70 years and over.

The 2.4-mile Roughwater began at San Souci Beach near the Waikiki Natatorium at 9 a.m. and ended at the Duke Kahanamoku Beach fronting the Hilton Hawaiian Village Hotel.

Cater said that the '85 swim took an agonizing three hours and 57

minutes. "I was exhausted at the end."

Cater, an accomplished surfer and not a distance swimmer, has never won a Roughwater medal for performance but received an award today. Anderson called it a "perfect attendance" trophy in appreciation for his years of support.

Stanford University's water polo team competed, as well as the University of Hawaii men's and women's swimmers.

"UH enters the Roughwater as a fun-race and shakedown before serious pool swimming begins," Anderson said. Cater recalls the first Roughwater in 1970 that drew 62 people. "No one had any idea that the swim would grow to where it is today," he said.

What makes this race so special? Cater believes it's the variety of swim conditions that can be expected—the unknown.

"Some races are fast, some are slow. It comes down to the winds, tides and currents and talent," Cater said.

HAWAII CLIPPING SERVICE
P.O. Box 10242
Honolulu, Hawaii 96816
PHONE: 734-8124
Victoria Custer Elaine Stroup
HAWAII TRIBUNE HERALD
SEP 1 1989

Queen Liliuokalani race is crew-crowded

By Liz Ambrose
Special to the Tribune-Herald

KAILUA — Get ready for a crowd this weekend — especially if you're in the water.

Paddlers from Hawaii, the Mainland and as far away as Canada will compete in the 18th annual Queen Liliuokalani Championship Long Distance Race here tomorrow and Sunday.

The race, chosen by the American Canoe Racing Association as the National Championship Race.

"This race draws more clubs than any other race, even the Molokai Hoe," Moku O Hawaii Secretary Maile Mauhili said yesterday. Last year 120 crews competed — 52 women and 68 men.

The two-day event begins tomorrow with the "Wa'a Kau-

Paddling

kahi" or the single hull event.

There are two races each day. The women start the competition at 8 a.m. tomorrow. Leaving Kailua Pier they will paddle for a grueling 18 miles to Honanau Bay. The men paddle the same distance, 30 minutes after the end of the women's race, bringing the boats back from Honanau Bay to Kailua Pier.

There are four different divisions in each race. The men/women, the masters, senior masters and ironmen/ironwomen.

Except for the ironmen/ironwomen race the crews are made up of nine paddlers. Six paddlers are in a canoe at any one time and three relief paddlers in a

"chase boat."

The exchanges take place while the canoe is moving. Three paddlers are dropped off in the water in front of their canoe. When the canoe reaches the paddlers, three paddlers in the canoe roll out and the relief paddlers climb in.

In the ironmen/ironwomen race there are only six paddlers and no relief in sight.

Last year's results for the women were:

—Healani Canoe Club, first, in 2 hours, 13 minutes and 44.00 seconds.

—Outrigger CC, second, in 2 hours, 15 minutes and 15.59 seconds. OCC also still holds the record for the race, set in 1987, at 2:11:40.00.

—Kai E Hitu, third overall, first ironwomen and first Big Island, in 2:24:41.00.

Last year's results for the

men were:

—Outrigger CC, first, in 2:12:41.00. OCC holds the record, set in 1987, 2:08:37.

—Kailua CC (Oahu), second, in 2:18:44.00.

—Kamehameha, third, in 2:19:12.00.

On Sunday, the Wa'a Kaulua or double-hull canoe race takes place. It involves 12 paddlers, no relief paddlers and covers a distance of 5½ miles. The women start the race at 9:30 a.m. at Kailua Pier and travel to Keauhou Bay. The men bring the boats back.

Last year's results for the Wa'a Kaulua were:

—Women's race: 1. Healani CC, 2. Marina Del Ray CC (California) and Hanalei CC, 3. Kai E Hitu CC.

—Men's race: 1. Kamehameha CC, 2. Hanalei CC, 3. Lokahi.