

SEP 7 1990

Hanalei Canoe Club does well at Liliuokalani Championships

KAILUA-KONA—Sparked by their record single-hull outrigger canoe victory in the 18-mile Queen Liliuokalani Long-Distance Championships in Kailua-Kona, Healani Canoe Club's open women's crew paddled to another victory recently in the double-hull competition. This is the second year in a row they have won both the single and double hull events.

The races are hosted and organized by Kona's Kai O Pua Canoe Club and sanctioned by Moku O Hawai'i, the Big Island's canoe racing association.

They covered the 5.5-mile course from Kailua Bay to Keauhou Bay in 44 minutes, 34 seconds, finishing first over 21 entries from California, Canada, Australia, and Hawai'i. Second in the women's division was the Hanalei Canoe Club (45:51), and third was the Outrigger Canoe Club (46:10).

In the men's double-hull division over the same course, but in the reverse direction, the Hanalei Canoe Club led 21 entries, finishing in 38 minutes, 55 seconds. In second place was Lanikai (39:32), and third was Lokahi (40:04).

Led by O'ahu's Outrigger Canoe Club, the top 10 finishers in the open men's division of the Steinlager Queen Liliuokalani Long-Distance Canoe Race all broke OCC's 1987 record, with OCC finishing first in a koa canoe in a record one hour, 58 minutes, 50.97 second victory over a field of 80 men's crews from Australia, California, Canada, and Hawai'i. The old record was 2:08:37.

In the women's division, Healani Canoe Club's open women's crew also broke a record with a time of 2:11:27.56, finishing first in an field of 64 entries. The old record of 2:11:40.03 was also set by the

OCC's women in 1987.

Extremely calm, glassy waters, and very little wind combined to create perfect flat water competition conditions for the two-day event, which annually draws the largest entries of any long-distance race in the state.

At the starting lineup of the men's single hull race, 80 canoes stretched out to sea for over 1 1/2 miles.

A total of 64 crews were entered in the women's single hull race. Total participation by the 144 teams totals approximately 1,300 paddlers, who competed over a historic and mostly deserted coastline, parts of which haven't changed much since the days of Captain Cook.

There were five divisions: Open, Masters, Sr. Maters, Ironman, and Ironwomen. Here are the double hull results (Kauai teams in bold-face).

Men's Double-Hull. (1) Hanalei - 38:55. (2) Lanikai - 39:32. (3) Lokahi - 40:04. (4) Waikiki Surf Club - 40:33. (5) Kailua - 40:57. (6) Kamehameha (Hilo) - 41:19. (7) Lanakila - 41:24. (8) Napili - 41:36. (9) Lahaina - 41:54. (10) Hanalei - 41:19. (11) Keoua - 42:59. (12) Kailua - 43:14. (13) Kawahae 1 - 43:22. (14) Kai Ehiu - 43:33. (15) Anuenue/Surf Sport - 44:19. (16) Hamilton Island - 44:27. (17) Keauhou - 45:09. (18) Imua Offshore - 45:56. (19) Kawahae 2 - 46:01. (20) Honolulu - 46:23. (21) Manukai - 46:25.

Women's Double Hull. (1) Healani - 44:34. (2) Hanalei - 45:51. (3) Outrigger - 46:10. (4) San Diego - 46:48. (5) Napili - 47:09. (6) Hui Nalu - 47:19. (7) Unknown - 47:32. (8) Lanaina - 48:49. (9) Kihei

SEP 2 1990

OCC tops Queen's race

Led by Oahu's Outrigger Canoe Club, the top 10 finishers in the open men's division of the Queen Liliuokalani Long-Distance Canoe Race all broke OCC's 1987 record yesterday with OCC finishing first.

Outrigger, in a koa canoe, came in at a time of 1:58:50 over a field of 80 men's crews from Australia, California, Canada and Hawai'i. The old record was 2:08:37.

In the women's division, Healani Canoe Club's open women's crew also broke a record with a time of 2:11:27, finishing first in a field of 64 entries. The old record of was 2:11:40 also set by the OCC's women in 1987.

The races continue tomorrow with the 5 1/2-mile double hull event from Kailua Bay to Keauhou Bay.

For results see For The Record.

SEP 4 1990

Healani CC, Hanalei top Queen's races

Sparked by their record single hull outrigger canoe victory in Saturday's 18-mile Queen Liliuokalani Long-Distance Championships, Healani Canoe Club's open women's crew paddled to another victory Sunday in the double hull competition.

This is the second year in a row they have won both the single and double hull events.

Healani covered the 5 1/2-mile course from Kailua Bay to Keauhou Bay in 44:34, finishing first over 21 entries from California, Canada, Australia and Hawai'i. Second in the women's division was Hanalei Canoe Club (45:51) and third was Outrigger Canoe Club (46:10).

In the men's double hull division over the same course but in reverse direction, Hanalei Canoe Club led 21 entries, finishing in 38:55. In second place was Lanikai (39:32) and third was Lokahi (40:04).

The races are hosted and organized by Kona's Kai O Pua Canoe Club and sanctioned by Moku O Hawai'i, the Big Island's racing association.

The double hull canoe is made by lashing two single hull canoes together. It is paddled by 12 paddlers and no crew changes are made.

Extremely calm, glassy waters and no wind created perfect conditions for the two-day event, which annually draws the largest number of entries of any long-distance race in the state.

At the starting lineup of the men's single hull race, 80 canoes stretched out to the sea for over one and one-half miles. Sixty-four crews were entered in the women's single hull race. Total participation by the 144 teams totals approximately 1,300 paddlers who competed over an historic and mostly deserted coastline, parts of which haven't changed much since the days of Captain Cook.

SEP 1 9 1990

THE SPORTING LIFE

Healani women making a serious channel challenge

By Jack Wyatt
Special to the Star-Bulletin

As the perfect gift in its centennial year, the women of century-old Healani Canoe Club would like nothing more than to win their first Na Wahine O Ke Kai race on Sept. 30.

If paddler talent and crew enthusiasm win races, the Healani women can begin their victory march today.

"We should be competitive with any club in the state and might even give Off Shore (Calif.) a run (for first)," distance coach Marshall Rosa said.

Four-time defending champ Off Shore and Oahu's Outrigger, winner of four Na Wahine races, pose Healani's two biggest threats.

The 41-mile race, from Molokai's Hale O Lono Harbor to Waikiki's Duke Kahanamoku Beach, is expected to draw 28, 12-paddler women's crews. Five paddlers, plus a steersman, are in the canoe at any one time, with open-water crew changes being made throughout the race.

For the first time since the race began in 1979, crews from Australia, Canada and New Zealand will compete. Also entered are crews from California and four Hawai'i islands.

"A strong field of visiting and local crews. This could be our most competitive event yet," race director Hannie Anderson said.

Only three clubs — Off Shore (1986 through 1989); Outrigger (1979, '81, '84 and '85) and Hui Nalu (1982-83) have won the classic across the Kai'i Channel. Big waves and strong winds caused the 1980 race to be canceled.

Off Shore, led by its crew of seasoned

NA WAHINE O KE KAI

Past winners

Year	Club	Time
1989	Off Shore (Calif.)	5:59:36
1988	Off Shore (Calif.)	6:14:22
1987	Off Shore (Calif.)	6:26:25
1986	Off Shore (Calif.)	6:31:04
1985	Outrigger (Hi.)	6:50:31
1984	Outrigger (Hi.)	6:12:11
1983	Hui Nalu (Hi.)	6:33:07
1982	Hui Nalu (Hi.)	6:43:38
1981	Outrigger (Hi.)	6:47:11
1980	Race canceled	
1979	Outrigger (Hi.)	6:35:14

veterans, including a pair of Swedish Olympians, is favored to win its fifth consecutive race.

Off Shore also holds the course record, set last year with its five-hour, 59-minute, 38-second crossing.

"Our first goal was to win the race," Off Shore steersman Mindy Clark said from Los Angeles. "Our second goal was to break Outrigger's 6:12:11 record, and our third goal was to finish under six (hours). We had a good day."

Robin Nonaka, one of Healani's six steersmen, can't remember when her club has had so many women. Healani plans to field two 12-paddler open crews — one each in the fiberglass and koa divisions.

"A club turnaround. It's exciting to be a contender," Nonaka said of this season's surge.

Except for the Dad Center race won by host Outrigger, Healani has swept the remaining three women's long-distance events.

The club credits its large turnout partly to transfers.

"It's a good opportunity to join a crew that has a chance at winning," said steersman Luana Froiseth, a longtime Waikiki Surf Club paddler.

Melissa Tongg also has switched over from Surf Club and Tonky Eleno is a former Honolulu Canoe Club competitor.

"My club had no plans to do Molokai. Healani gave me the opportunity to paddle and learn from Coach Rosa, someone I've always respected," said Eleno, who completed her first Molokai to Oahu kayak race last spring.

Lorey Bode, holder of the women's record for the channel kayak race, has come over from Hui Nalu. And there are several paddlers from Kailua Canoe Club who have come over the Pali to paddle.

The eruption of Healani spirit and commitment, according to Rosa, was due in part to last year's race, in which the Ala Wai-based club placed second to Off Shore, beating local favorite Hui Nalu and perennial winner Outrigger.

Said Healani steersman Rosie Lum: "As the underdog last year, finishing first among local crews was a thrill. To win this race would be even better."

Lum, who missed only one Na Wahine O Ke Kai in 12 years — in 1982 — has also made the paddling rounds, competing for Waikiki Surf Club, Hui Nalu, Hawaiian Warriors, Anuenue, and Hui Lanakila before Healani.

Like most experienced local paddlers,

Lum hopes for rough conditions.

"The bigger the waves and stronger the wind the better," she said.

Steep channel swells are thought to give local crews an advantage.

News of Healani's great depth and strength has spread across the ocean.

"We've heard of Healani's successes," Off Shore's Clark said. "We also know that everyone in Hawaii is out to beat us. Winning again will be no easy task."

Wave practice for Off Shore comes when its coach, Billy Whitford, drives his powerboat back and forth across the canoe's bow, creating a wake off Newport Harbor.

"Riding a wake is no substitute for Molokai Channel waves, but they're the only ones we have," Clark said.

Clark will have several former Olympians in her crew, including Swedes Agnet

Andersson and Anna Olsson. The two combined for three gold and two silver medals at the Los Angeles Games in 1984.

Rosa has no Olympians but the demanding coach has a gold medal workout plan. The Healani women paddle at least four days a week — sometimes twice a day — and run sprints almost daily.

"If the crews aren't ready now, they never will be," the coach said after last Sunday's long endurance paddle.

Healani crew members range in age from 18 to 47.

Tanya Beirne and Miki Paialina are Healani's only two paddlers without a channel crossing to their credit.

"I'm excited. The Molokai is something I've always wanted to do," Paialina said.

The race starts at 7 a.m. at Hale O Lono. The first canoes are expected at Kahanamoku Beach around 1 p.m.

SEP 1 1990

Continued from page 48

Suit for special, general and punitive damages to be shown for alleged injuries resulting from alleged assault. Atty. for plaintiffs: Bode A. Uale.

C-90-2792—Sarah W. Bowers, fka Sarah Elizabeth Wehi Onopua Laa and Eli Kala Laa Jr. vs. Heirs or devisees of William Kalahikiola Laa, aka Kalahikiola Laa, aka William K. Lee, Owners and/or occupants of adjoining parcels of land: A.H. Dondoro, Kuichi Marua, et al. Suit for order that defendants set forth the nature of their claims to 1038 Noble Lane, Kapalama, Oahu, that all adverse claims of defendants be determined, for judgment that plaintiffs are the sole owners of the property and for determination of the correct size of the property. Atty. for plaintiffs: Raymond Mundo.

C-90-2796—Willis L. Warner and Maryann P. Warner vs. Bishop Museum. Suit for specific performance of DROA for plaintiffs purchase of real property at Kealahou, South Kona, Hawaii, including subdivision of defendant's property to allow the conveyance of subject parcel to plaintiffs, or in the absence of a judgment for specific performance, damages to be shown and for consequential damages to be shown for alleged breach of DROA. Atty. for plaintiffs: James H. Ashford.

Cases Filed in U.S. District Court

Filed Aug. 31-Sept. 7

C-90-00640—James Keiki and Lily K. Keiki vs. Owens-Corning Fiberglas Corp., etc., et al. Notice of removal from First Circuit Court (90-2217). Atty. for defendant Owens-Corning Fiberglas Corp.: Roy R. Hughes.

C-90-00641—Operating Engineers' Trust Funds vs. James Nakoa Sr., individually and dba J.N. Rental Service. Suit for order that defendant submit timely reports and payments in alleged accordance with agreement(s), for sums to be shown due with interest, liquidated damages to be shown and that defendant furnish to each of the four plaintiff trust funds a surety bond or

cash-in-escrow in a sum equal to defendant's last three months of contribution or \$5,000, whichever is greater, for alleged breach of agreement(s). Atty. for plaintiff: Ashley K. Ikeda.

C-90-00642—Sandra Aaron and Carl T. Aaron vs. John Does 1-10. Notice of removal from First Circuit Court (89-1681). Atty. for defendant Hydrocol Inc.: Robert P. Richards.

C-90-00643—Viola T. Quilit vs. Safeway Stores Inc. and Earl Mead. Notice of removal from First Circuit Court (90-2409). Atty. for defendants: Gregory M. Sato.

C-90-00644—Mary Wilkowski vs. Wendall Suto, Outrigger Canoe Club, Oahu Hawaiian Canoe Racing Assn. Suit for general, special and punitive damages to be shown for alleged injuries resulting from alleged negligence. Atty. for plaintiff: Lance A. DuBos.

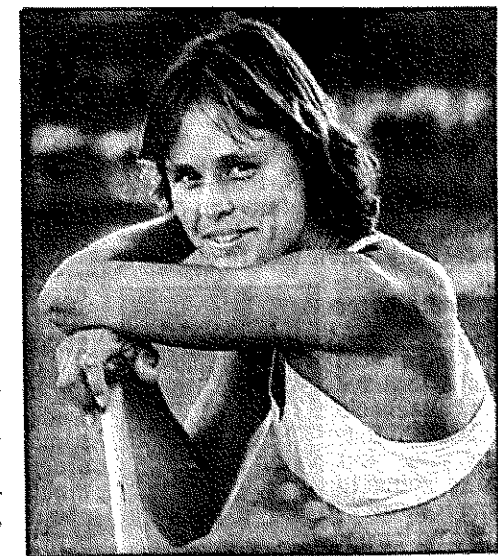
C-90-00645—Frank Yap Jr., as special administrator of the estate of Miami Kumagai, deceased, Yoshimasa Kumagai, Teiko Kumagai, et al. vs. Controlled Parasailing of Honolulu Inc., Parasailing Enterprises Inc., Controlled Parasailing Systems Inc., et al. Notice of removal from First Circuit Court (89-0717). Atty. for defendants: Grant K. Kidani.

C-90-00646—Christina Huihee vs. Director, Drug Enforcement Agency; United States of America, et al. Suit for declaration that plaintiff is the first priority lienholder and legal owner of subject automobile and that her claims thereto are superior to any asserted by any other person including defendants, for order enjoining defendants from failing and refusing to deliver the possession and full title to the automobile to plaintiff and for general and special damages to be shown for alleged seizure of the automobile without due process and adequate and sufficient compensation. Atty. for plaintiff: Eric A. Seitz.

C-90-00647—Sally L. Hinsenkamp vs. Credit Claims and Collections Inc. Suit for \$2,000 as statutory damages for alleged violations of the Fair Debt Collection Practices Act. Atty. for plaintiff: Mariene Q.F. Young.

C-90-00649—Jerry I. Wilson vs. Donald K. Fisher, W. Kenneth Law, Gerald M. Brown, et al. Suit for damages not less than \$50,000 and punitive damages to be shown for alleged negligence, unfair and deceptive trade acts, abuse of process, breach of fiduciary duties and fraud. Atty. for plaintiff: pro se.

COURT REPORT



By Dennis Ode, Star-Bulletin

Above, Kelly Fey, a Healani Canoe Club paddler, rests up before a workout. Below, the women of Healani begin their afternoon practice on the Ala Wai Canal.

