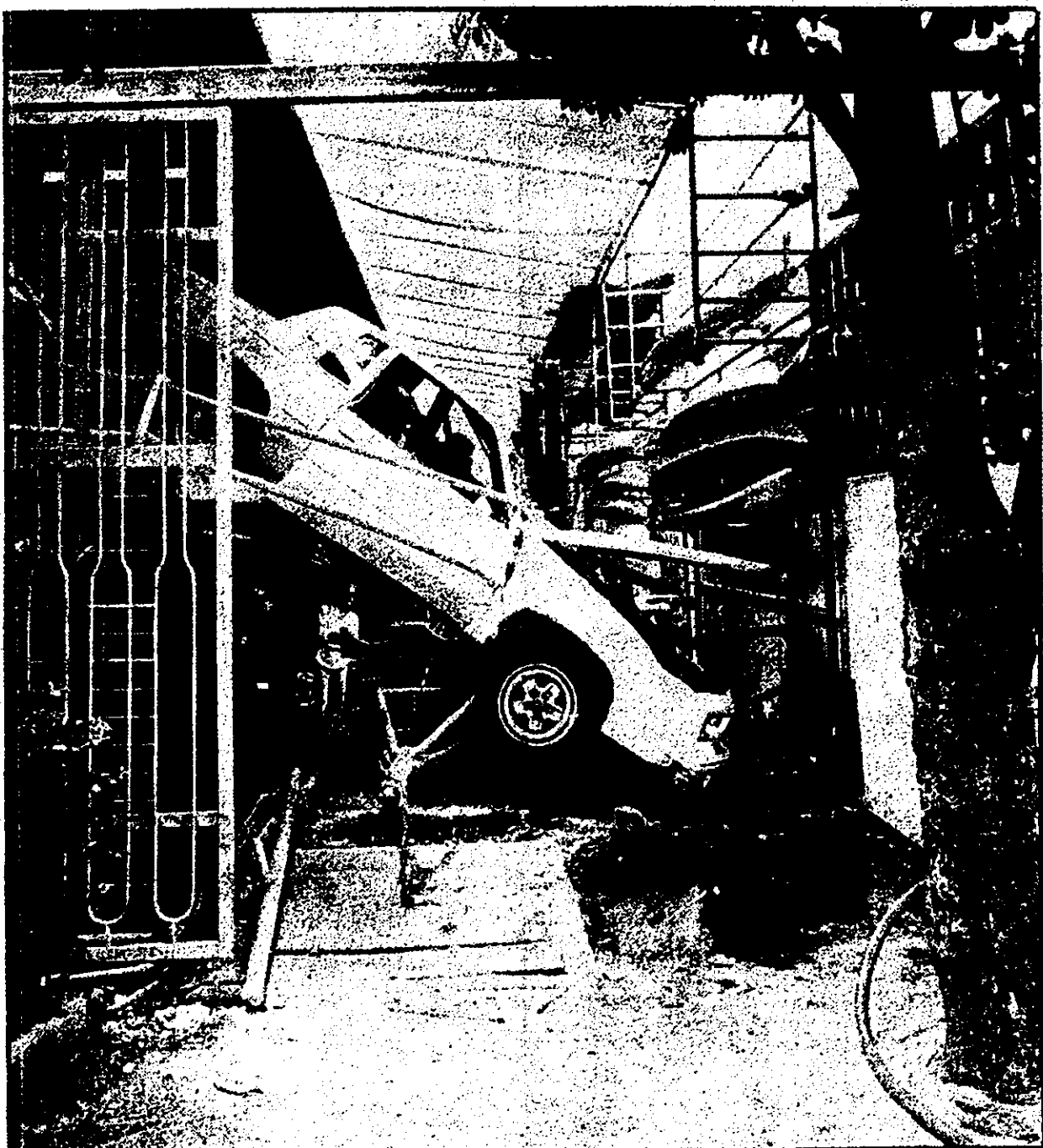


APR 22 1987

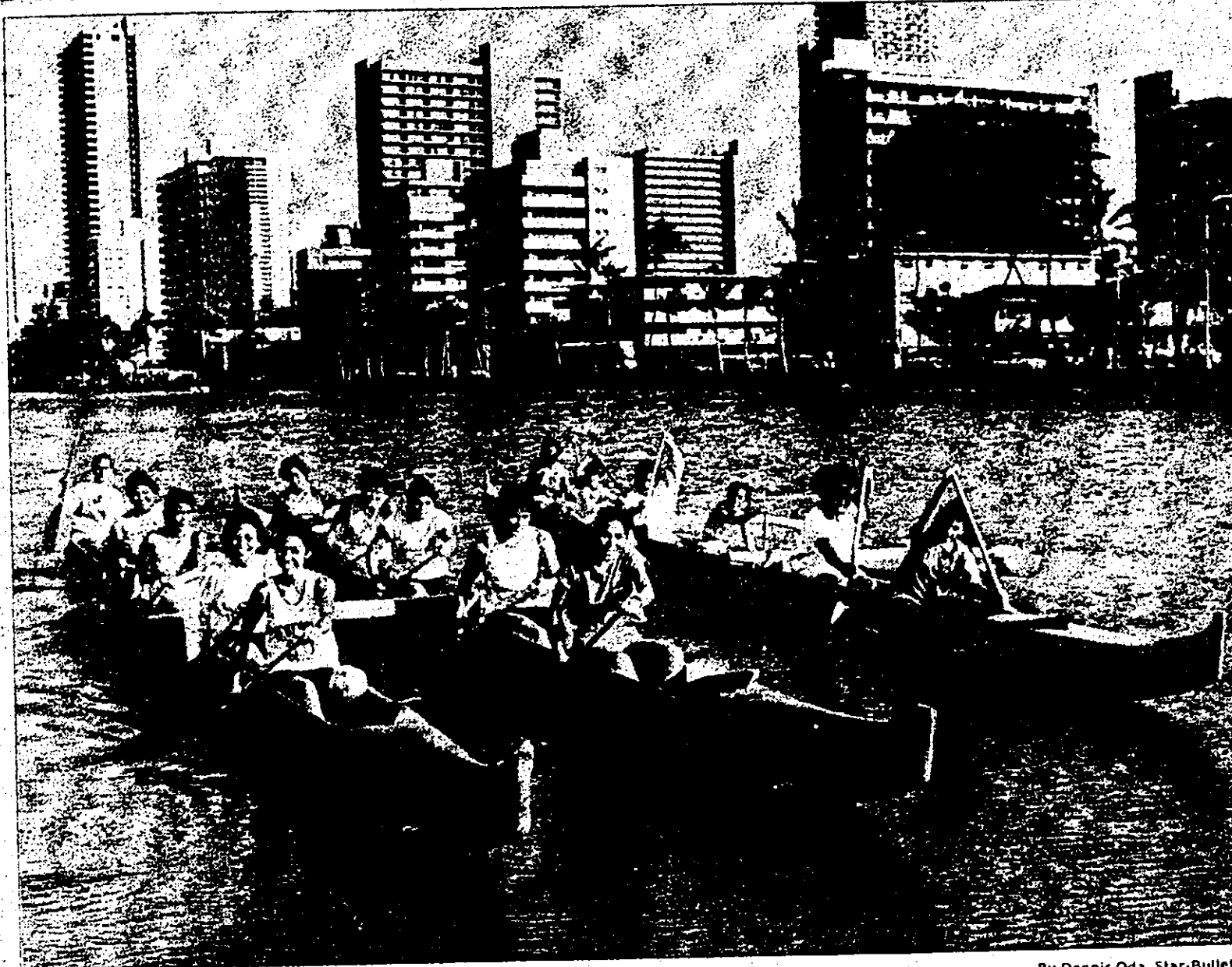


Advertiser photo by David Yamada

Hanging two

Two Kaneohe women, Dorothy Conner and Mary Walton, both 79, suffered minor scrapes and bruises yesterday when Conner's car went off the second-floor parking level of the Outrigger Canoe Club garage. Conner said the accelerator on her 1984 Oldsmobile stuck, propelling the car through a guard rail. The accident was similar to an August 1983 accident in which actor Tom Selleck and stepson Kevin drove off the garage's third floor.

Ala Wai workout



By Dennis Oda, Star-Bulletin

Members of the Hui Lanakila Canoe Club practice at the Ala Wai Canal every afternoon. Oahu's preseason regatta competition begins next month and over 50 clubs on Oahu are looking for paddlers.

Canoe clubs look for paddlers

Regatta season starts next month but it's not too late to join

By Jack Wyatt
Special to the Star-Bulletin

Want to paddle from Molokai to Waikiki in an outrigger canoe but don't know the basic strokes? Got the urge to surf a canoe down a comb but you don't know an ama (float) from an iako (cross-bar).

With the regatta season fast approaching, Oahu canoe clubs are looking for a few good men, women and youngsters to fill out their crews.

All clubs are out recruiting paddlers. With 31 events in each regatta, clubs have a lot of seats to fill, said Joan Malama, president of the 20-club Oahu Hawaii Canoe Racing Association.

Added Hui Wa'a Canoe Racing Association's Gardner Brown, "Our Association has 15 active clubs and there's not one that would turn someone interested in paddling away." Oahu's preseason regatta competition begins next month.

MALAMA EXPLAINED that there's still plenty of time for even the new paddler to learn the strokes. "That's why we've included novice races in our schedule. You've got to start some place," she said.

How does one learn to paddle a 30-foot, 400-pound, outrigger canoe through rough surf? Or to sprint all-out in flat water? According to association officials, opportunities for basic training are readily available. But to become proficient in racing takes hours of paddling practice.

For those interested in paddling, contact the club nearest

your home, school or office, suggests Malama. "And don't be shy," she says. "Just tell any coach that you want to learn and you're likely to be snapped up."

CANOE CLUBS can be found at most Oahu beach parks but the largest concentration of canoe activity are at two sites—Kailua Beach Park serving the Windward coast and at Ala Wai Canal in Honolulu.

"We're looking for novice men and women, plus youngsters, 12 through 18 years," said Gary Loo, president of Hui Lanakila Canoe Club.

Healani Canoe Club's coach Gary "Sword" Murakami explained that his club's strength is in the upper age divisions but that he could use a lot more boys and girls to fill out the younger teams.

"Beginners are especially important in building a program. Our coaches can teach anyone the strokes," he said.

THE FLEDGLING Wai Nani Canoe Club, now in its second season of racing, could use paddlers of all sexes, sizes, shapes

and ages. "If you know of six kids—all the same age—send them down. They'll make up an instant crew," Wai Nani's Hunchy Matsumoto said.

Waikiki Surf Club's Luana Froiseth says she's interested in any person, 12 years and up. "They must be sincere about daily practice and want to race on Sundays," she said. Kamehameha's Richard Kaku explained that his club is on the lookout for all paddlers, experienced or novice.

Hui Lanakila, Healani, Kamehameha and Wai Nani are based at the Ala Wai Field Clubhouse near the McCully Street Bridge and use the Ala Wai Canal for workouts. Waikiki Surf also operates on the canal but from the foot of University Avenue.

BECAUSE SUCCESS attracts success, new paddlers flock to large clubs leaving the smaller organizations to scramble. "Kids like winners and they happen to be the big clubs," Wai Nani's Matsumoto said.

Outrigger, Kailua and Hui Nalu are OHCRA's perennial

powers, while Healani and Hui Lanakila follow close behind. "Filling out crews is a major problem whether the club is large or small," Malama said. At full strength, OHCRA has about 3,000 paddlers, while Hui Wa'a has 2,000.

OHCRA's regatta season begins May 16 with a special 18-and-under event at Kaneohe Bay. Hui Wa'a's first regatta gets underway a week later at Waianae. The regatta season for both associations culminates Aug. 1 with the Hawaii Canoe Racing Association State Championship at Keelii Lagoon.

APR 28 1987

THE TUES. RUSE: Cobey Black knows two older kamaaina ladies who were out walking and saw a crew doing road work, supervised by guards with "OCCC" on their shirts. One of the ladies surmised: "It must

a be a project of the Oahu Country Club." Her friend disagreed: "No, they don't look right for that — they're from the Outrigger Canoe Club." **Make it Oahu**

Black
Community Correctional Center . . . Add Ch. 5 to the Honolulu TV wars —

Don Metzger jumping from Ch. 13 to get new channel featuring "electrifying family entertainment" on the air by end of the year . . . Fore! dept.: There's a wonderfully romantic story about a second-honeymooning couple renting a golf cart at a Hawaii seaside resort and going out to see the famous golf course — and being interrupted by golfers behind a scenic green beside the surf in, shall we say, a delicate position. But the resort absolutely doesn't want to be mentioned . . . Speaking of romance: Record 41 weddings performed at Waimea Falls Park last month . . . Fabulous — the **Makk Family's** new book, "A Vision of Life," collection of beautiful paintings by Americo, Eva and son A.B. □□□