

JUN 2 1990

Kayaking paves way for canoe season

By Stephen Tsai
Advertiser Staff Writer

At first glance, local canoe racing appears to be cruising on familiar waters for this weekend's opening of regatta season. Lokahi still is the favorite among the 13 Hui Wa'a Association clubs. The Big Three — Outrigger, Kailua and Hui Nalu — still are the leading contenders in the Oahu Hawaiian Canoe Racing Association. Paddlers still approach race courses one leg at a time.

But look at the undercurrent, where things are a-changin'.

Kayak training is in. Development pros-
side is you don't really get the team feeling because you're not working with the guys on a regular daily basis."

If kayaking has splintered clubs, the senior rule apparently has had the opposite effect. In the past, crews that paddled in more than one upper-divi-

grams might be out. Keehi Lagoon is in as the site for tomorrow's OH CRA regatta but construction problems might force it out as the site for the Oahu championships.

Hui Nalu's Nainoa Thompson, the state's most notable steersman, returns to the sport after a long layoff. Outrigger's Tom Conner, steersman on several winning Molokai Hoe crews, might be out because of other commitments.

But the most significant changes, according to canoe officials, are traced to the boom in kayaking and the introduction of the senior rule.

Outrigger coach Tom McTigue said kay-

aking helps condition paddlers for canoe season. "Everybody is in much better shape," he said.

Said Hui Nalu coach Darryl Hara: "Now we're fine tuning."

McTigue said 11 of the 12 Outrigger members who participated in the recent Molokai-to-Oahu kayak race will paddle this season. Kailua coach Kamao Kalama said most of his club's upper-division crews trained with kayaks during the off-season.

What's more, Kalama said kayaking is replacing standard canoe practices. He

See Canoe, Page C4

JUN 2 1990

Meetings

The Windward Christian Women's Club will hold its Summer Splash Luncheon at the Mid-Pacific Country Club Wednesday at 11 a.m. Reservations can be made by calling 262-6060.

The Women of Holy Nativity will have their spring luncheon at 11:30 a.m. June 9 at the Outrigger Canoe Club. Lunch costs \$10, and reservations can be made at the church office.

Outrigger still paddling power

Club begins '90s with same strength as in '80s

Page D-1



Dow up 34.22 to a record 2,935.19

Page C-1

Liberia requests U.S. help against rebels

Page A-9

'Evidence' shows skill of local film crews

Page B-1

Honolulu Star-Bulletin

MONDAY, JUNE 4, 1990

THE PULSE OF PARADISE

35 CENTS



By Dennis Odo, Star-Bulletin

Outrigger's senior women's crew, with Genie Kincaid, Jennifer Scafe, Katie McCrary and Katy Bourne, left to right, in the first four positions, won their 1 1/2-mile race.

Same old Outrigger swamps its paddling foes

□ The defending HCRA state champion posts an impressive season-opening win

By Jack Wyatt

Special to the Star-Bulletin

Outrigger Canoe Club, Hawaiian Canoe Racing Association's powerhouse of the 1980s, picked up where it left off winning the first regatta of the '90s — yesterday's Oahu HCRA season's opener at Keehi Lagoon.

"Nothing has changed from last season," paddler Marvin Takahashi said. "Keehi Park is still the same windy dust bowl. Its shore is still rocky and its waters murky. And to no one's surprise, Outrigger keeps piling on the points."

Placing first in 12 of the regatta's 30 heats, while finishing second in eight others, Outrigger dominated the 14-club meet from start to finish.

The six-time defending HCRA state champ scored a whopping 92 points, swamping second-place Kailua, which tallied a distant 52. Hui Nalu placed third with 34 points, followed by Healani with 32. Hui Lanakila and Lanikai tied for first in OH CRA's small club division each scoring 22 points.

"I expected our adult paddlers to

perform," said Tom McTigue, Outrigger's elated first-year coach. "It was the paddling of our younger crews that came as a surprise. They scored our big points."

Outrigger was the only club that entered crews in all 30 events.

"I haven't turned out (for paddling) because Outrigger doesn't need me and I would rather give someone else a chance," said Tom Conner, one of Outrigger's best steersmen.

While most clubs suffer from a paddler shortage, Outrigger enjoys great depth.

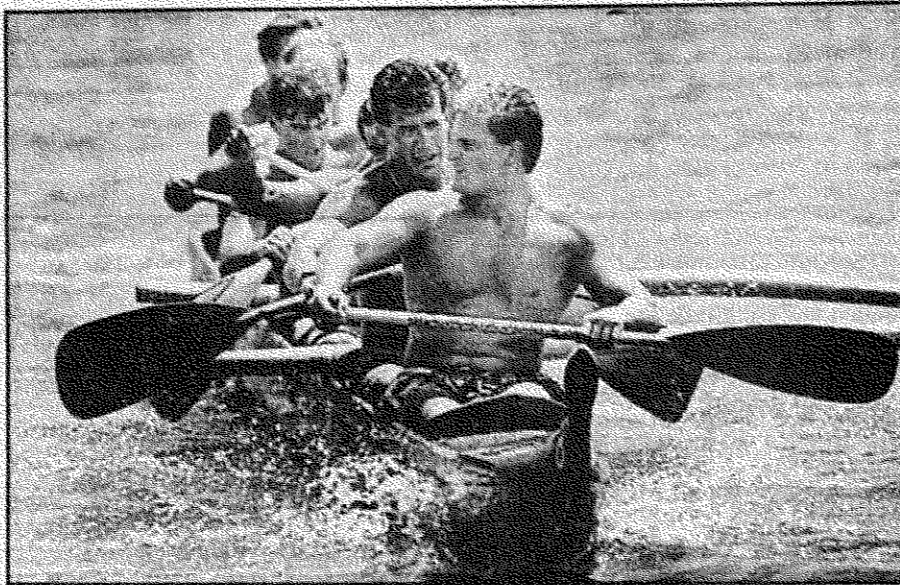
"I've never seen paddlers work harder or practice with greater enthusiasm," said Walter Guild Outrigger's upper-division women's coach.

"If today's performance is an indication, Outrigger is certainly the club to beat this year," admitted coach Mike Willett of Kailua Canoe Club. "But I believe we stand a good chance of winning regattas, especially later during the season after our young crews develop."

Kailua fielded 28 crews out of the maximum 30.

Third place Hui Nalu found paddlers for 25 crews yesterday and expects to reach the 30-crew limit within weeks. "Many of our paddlers are new. I don't know if we'll beat Outrigger but because of our crew spirit they'll know we're out there," Hui Nalu's coach Darryl Hara said.

Small "A" division clubs, those field-



By Dennis Odo, Star-Bulletin

Mark Sandvold leads Outrigger's men's sophomore crew in their 1 1/2-mile race.

ing fewer than 15 crews, have no chance of beating OH CRA's "AA" powers — Outrigger, Kailua, Hui Nalu or Healani.

"When a crew from a small club whips big club paddlers that fuels pride," Takahashi said.

Yesterday's win by Outrigger's senior masters women (45 years and older) padded their 10-race win streak that began in 1988. The crew included

Peggy Danford, Ruby Ifversen, Gerri Pedesky, Diane Stowell, Carol Wilcox and Keanuene Rochlen, who steered.

Defending champion Lokahi Canoe Club of Ala Wai Canal also picked up where it left off last season winning yesterday's Hui Wa'a opener.

Winning eight races, Lokahi outscored Manu O Ke Kai 56 to 43 to lead the "AA" division. Ka Mo'i topped the "A" division with 42 points.