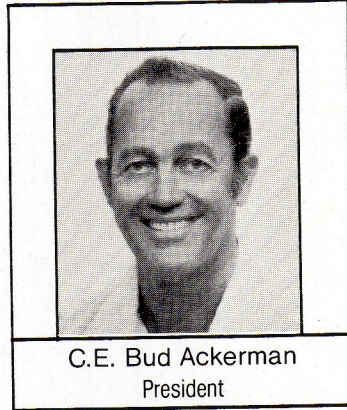
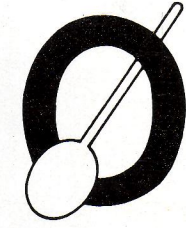


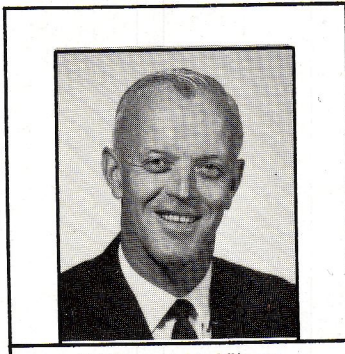
Outrigger Canoe Club



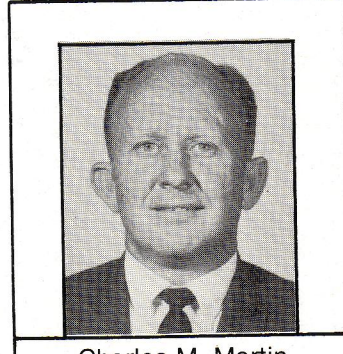
C.E. Bud Ackerman
President

BOARD OF DIRECTORS

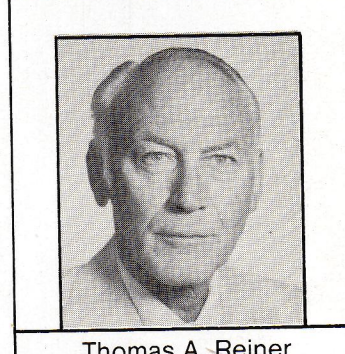
1980



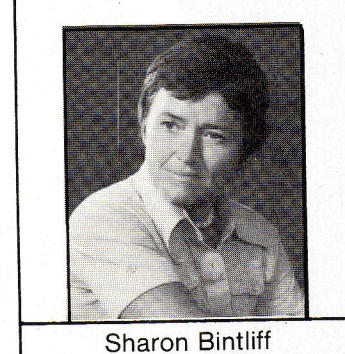
William M. Wilson
Vice President of Operations



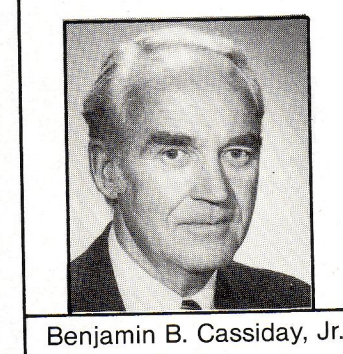
Charles M. Martin
Vice President of Activities



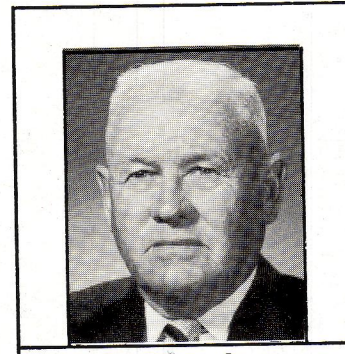
Thomas A. Reiner
Treasurer



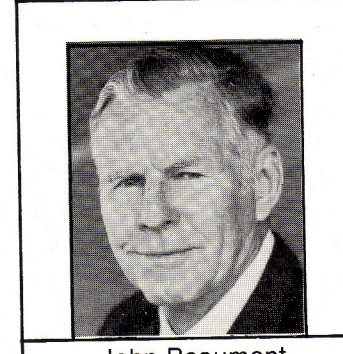
Sharon Bintliff
Assistant Treasurer



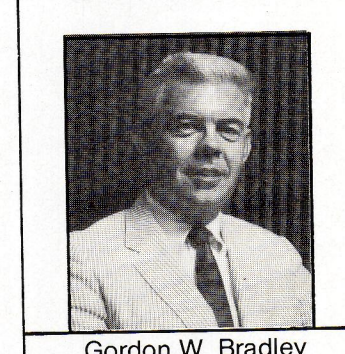
Benjamin B. Cassidy, Jr.
Secretary



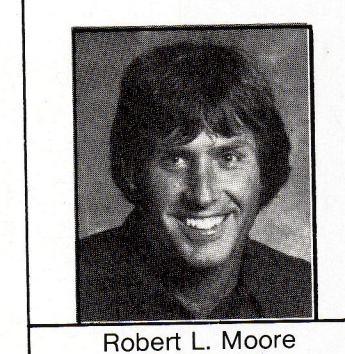
William C. Capp
Assistant Secretary



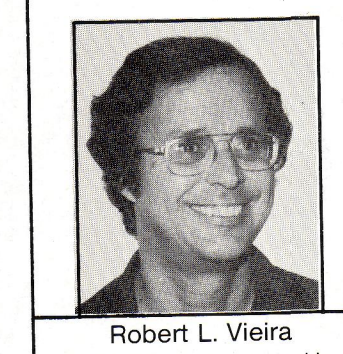
John Beaumont
Athletics/Winged "O"



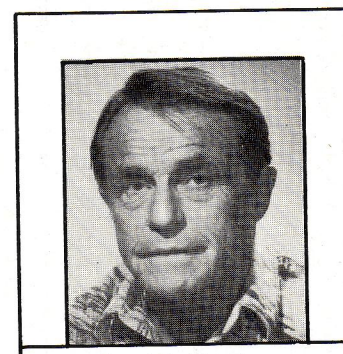
Gordon W. Bradley
Buildings and Grounds



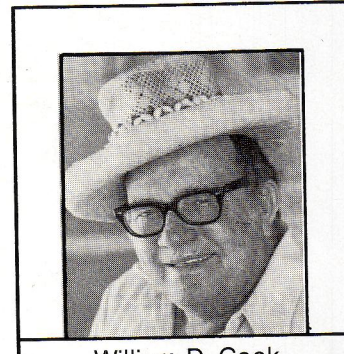
Robert L. Moore
House



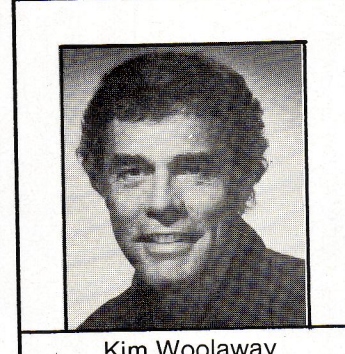
Robert L. Vieira
Admissions and Membership



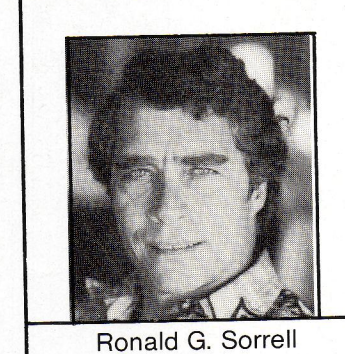
Guy W. Harrison
Ad Hoc Advisor to Board



William D. Cook
Entertainment

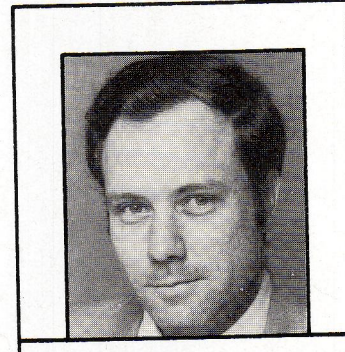


Kim Woolaway
P.R. and Historical



Ronald G. Sorrell
Long Range Planning

CLUB MANAGER



Raymond P. Ludwig