

JAN 2 2 1971

# Oahu Clubs Announce Winter Plans

## Thetas

Kappa Alpha Theta alumnae will have a founders' day luncheon tomorrow at 11:30 in the Imperial Suite of the Ilikai Hotel.

Among the honorees will be Island alumnae who have been active in the sorority work for 50 years. The women are Mrs. Arthur Sherry and Mrs. Betram Smith of Hilo.

Reservations and transportation arrangements may be made by calling the club president, Mrs. Louis L.

Jones, at 395-3498 or Mrs. Folger Athearn at 737-5719.



## Secretaries

Mildred L. Harvey will be installed president of the Architectural Secretaries Association at 8 p.m. Monday at the Outrigger Canoe Club.

Also to be installed are Betty Hays, vice president; Bertine Callow, secretary; and Edith Kato, treasurer.

The dinner will be preceded by no-host cocktails at 6:30 p.m. Attire is Hawaiian informal.

## Kauikeolani

The next general membership meeting of Kauikeolani Children's Hospital Auxiliary will be held Wednesday at the Honolulu Academy of

Arts, 900 S. Beretania St.

A tour of the Western Gallery will begin at 11:45 a.m., and luncheon and the meeting will follow at 1 p.m. at the Academy Garden Cafe. For reservations call Mrs. Paul Friese at 395-1531 or Mrs. Stratford Whiting, 737-6623, by Jan. 25.

The public is invited.

## Garden Club

The Uluwehi Garden Club will meet at 9 a.m. Wednesday at the home of Mrs. William R. Thompson, 694 Old

Mokapu Road. Mrs. William McDonald will speak on the medicinal use of Hawaiian plants.

## Library

Rabbi Robert Schenkerman, who will be leaving Temple Emanu-El in July,

will speak on "From the Dead Sea Scrolls to Portnoy's Complaint" at 7:45 p.m. Thursday at the Aina Haina Library. The public is invited.

The event is sponsored by the Friends of the Aina Haina Library.

JAN 25 1971

## secretaries dinner

New officers of the Architectural Secretaries Association will be installed at a dinner at the Outrigger Canoe Club tonight at 8 p.m.

New officers are Mildred L. Harvey, president; Betty Hays, vice president; Bertine Callow, secretary; Edith Kato, treasurer.

The dinner will be preceded by no-host cocktails at 6:30 p.m.

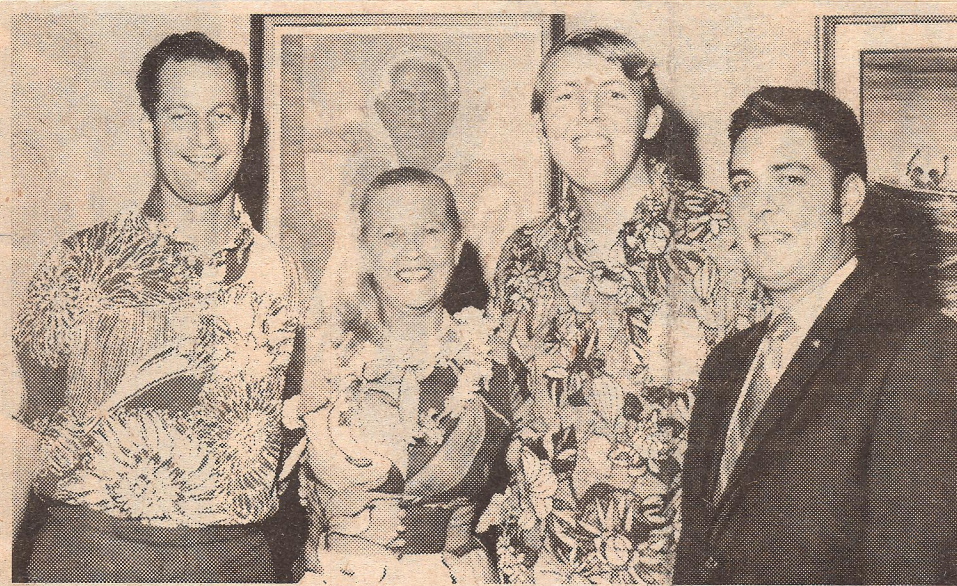
JAN. 29 1971



**AGENTS TOUR**--Creative Leisure and United Air Lines teamed up to fly 22 Southern California travel agents to view Creative Leisure's properties in the Islands. Pictured at the Outrigger Canoe Club in Waikiki are (from left): Greg Bright of Creative Leisure, Los Angeles; Mrs. Margaret E. Stinnette, Stinnette Travel Agency, La Mesa; Mrs. Betty Crutcher, Diners Fugazy Travel, San Diego, and Bruce W. Bolton, United Air Lines Sales Manager, Honolulu.

--United Air Lines Photo

JAN. 25 1971



**TOUR PARTY**--Creative Leisure and United Air Lines teamed up to fly 22 Southern California travel agents to look over the company's (Creative Leisure) properties in the Islands. Here at welcoming reception at the Outrigger Canoe Club in Waikiki are (from left): Thomas E. Kilmer, vice president-operations for Creative Leisure, Honolulu; Mary Cleary, Costa Mesa Travel Agency, Costa Mesa; Greg Bright, Creative Leisure, Los Angeles and George Archer, United Air Lines group and convention sales manager, Honolulu.

--United Air Lines Photo

# Top Volleyball Officials To Put On Clinic In Hilo

The Department of Parks and Recreation announced that it will be sponsoring a volleyball clinic this weekend with Harry Kealoha and Tony Crabb of Oahu conducting.

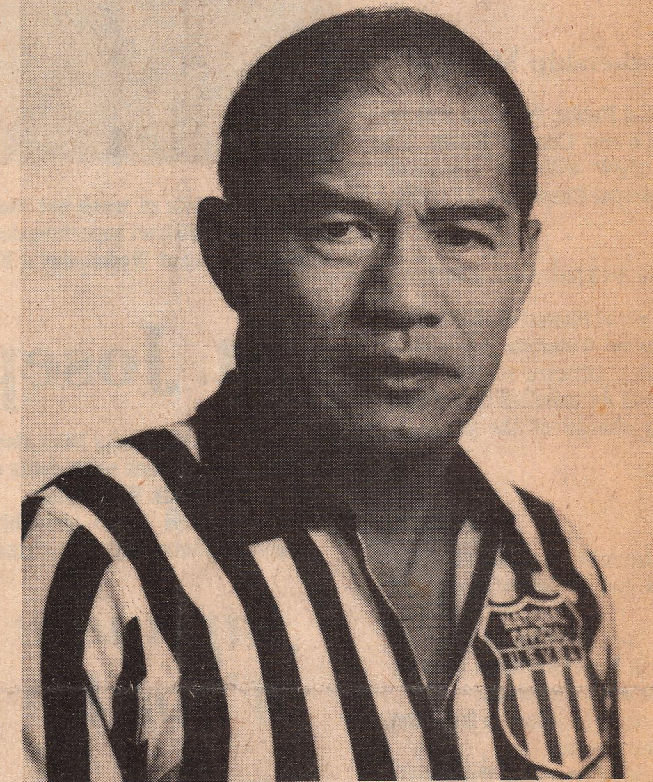
The two-day clinic will be held in conjunction with the Keaukaha MIA Men's Invitational Volleyball Tournament in the Pihihouna Gym.

The clinic, according to a P&R spokesman, will be broken into two phases. The first, starting at 6 p.m. on Friday will include a review of the rules, officiating procedures and a written examination for local referees wishing to attain USVBA status.

The second phase, which is scheduled to begin at 9:30 a.m. on Saturday, will highlight team play, including offensive and defensive patterns.

Kealoha, who has been involved in volleyball since 1936, has played on several AAU championship teams and has coached many titleholders in both men's and women's divisions in his long career.

He is the USVBA officials chairman for this area and annually conducts officials and coaches clinics for the high school division up to the open class. He has also traveled to South Vietnam, Thailand, Okinawa, Japan and Korea to conduct clinics.



HARRY KEALOHA

He was selected as "Leader in Volleyball" in 1967 by the USVBA for his activity in volleyball for 20 years or more; distinguished service rendered in advancing the game; and for significant contributions to volleyball.

Crabb is an outstanding

volleyball player who began his playing career in Hilo back in 1956. He also starred at Punahou, the University of Oregon, Outrigger Canoe Club, and Church College of Hawaii. He was a member of the Church College team that competed in the Portland Nationals in Oregon and his team finished second in the collegiate division and seventh in the open class. All six starters of this team came from the Big Island.

Crabb, this past summer, made the U.S. Volleyball team that went to Bulgaria for the World Games.

In sponsoring this clinic, the P&R is trying to give the local volleyball coaches, players and officials the necessary guidance to upgrade the standard of volleyball on the Big Island in all three aspects of the game, which may eventually give many of the teams much opportunity to participate in National-type tournaments.