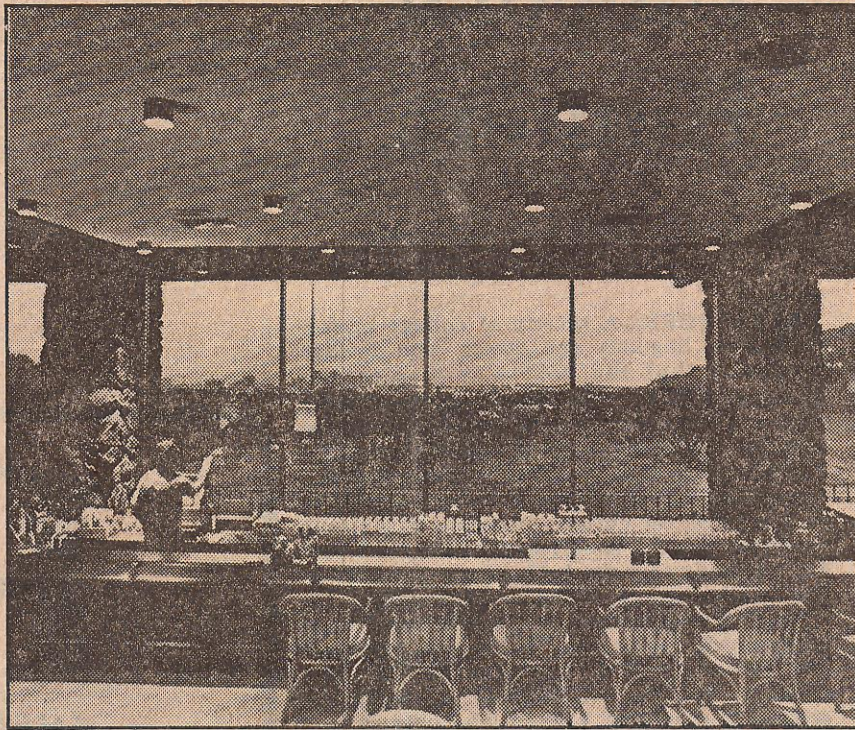
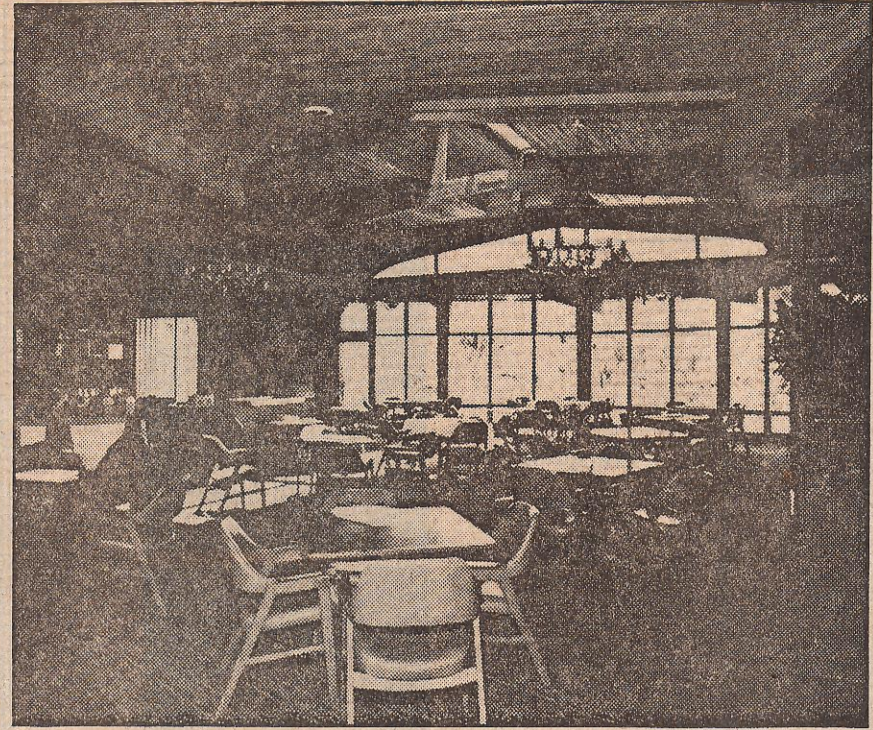




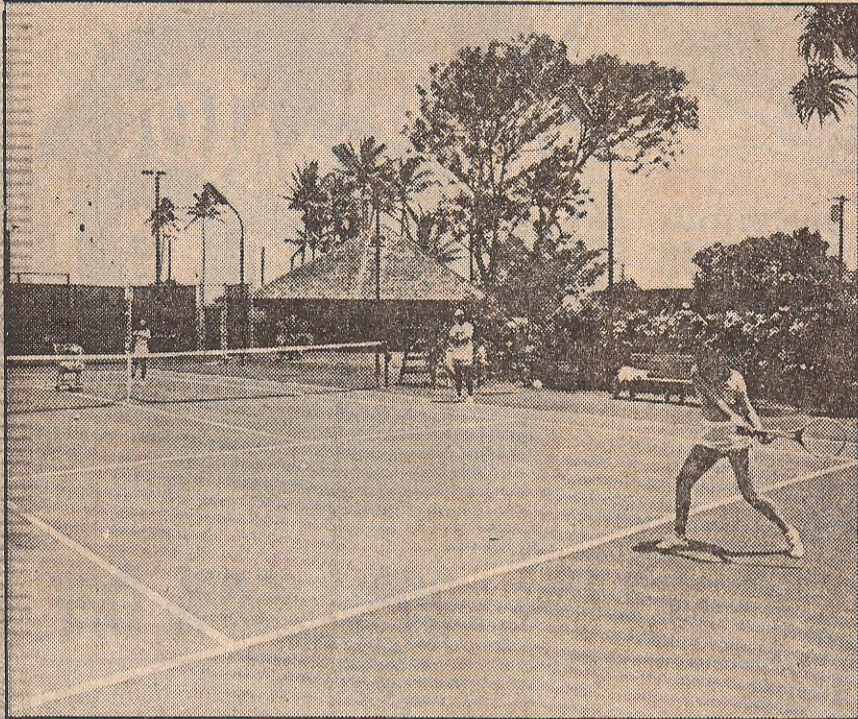
Waialae Country Club's men's grill



Oahu Country Club



Mid-Pacific Country Club dining room



Kailua Racquet Club

## The Club Life

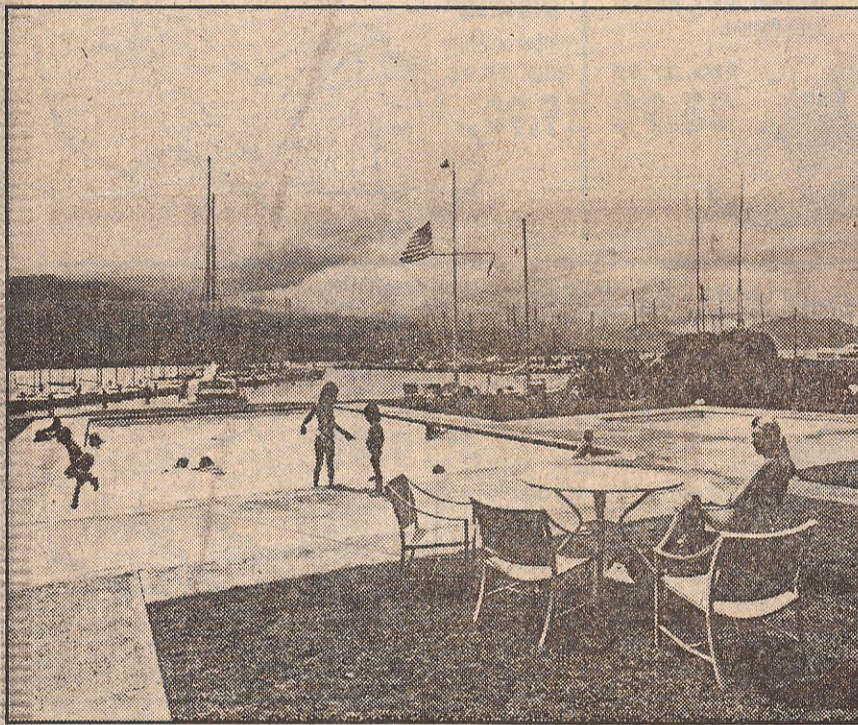
By Lois Taylor, Star-Bulletin Writer

From Cub Scouts to college fraternities, from bowling teams to Rotary, man is a joiner.

As he moves up the ladder of success, membership in a private club, like a corner office and an entertainment allowance, is a significant symbol of achievement.

For the purpose of this article, only private civilian clubs with quarters having indoor dining facilities were included, eliminating the polo club, most tennis clubs and all military and service organizations.

These, then, are Oahu's dozen private clubs, with a guide to cos' , activities, who belongs and how to join them.



Kaneohe Yacht Club

### Waialae Country Club

**S**ITE of the nationally televised Hawaiian Open, Waialae Country Club is probably more familiar to more golfers than any other club in town. It is also the most expensive Oahu club to belong to, and has as members many of the town's most influential business, political and professional leaders.

Initiation fee for a regular golfing membership is now \$8,000, and will go up to \$12,000 May 1. A new member must also buy a \$4,000 transfer certificate which is salable when the member resigns or dies.

Regular golfing membership dues are \$100 a month plus a minimum fee of \$25 which must be spent on food or beverage—cart rentals and golf balls don't count.

In addition to its beautiful golf course on the beach near Kahala, the club has tennis courts, a swimming pool and a handsome clubhouse. Lunch is served daily and dinner is offered Friday and Sunday nights. There are occasional dances and awards banquets.

Children of members may use the pool under supervision, and may take golf and tennis lessons from the club pros.

Single women may join as full members, although none have applied recently. Wives of members have full use of the dining room, bar and pool and restricted use of the golf course—they are encouraged to play weekday mornings.

Any person of good moral character and who is over 20 years of age may be nominated for membership. A candidate must be sponsored by two members, and must meet and be approved by all members of the membership committee before being voted upon by the general membership.

At Waialae, as at any private

club, it is considered good form for the member to initiate the subject to someone anxious to join, rather than candidate collaring a member and saying, "Hey, how can I join your club?"

There are long waiting lists in all categories, and the system generally is to join as a social member, without golf privileges, and then wait to become a limited golfing member with restricted golfing rights. Members often languish at that level for a long while until a regular membership is open, and are known to read the obituaries with more than a casual interest.

Thomas Hitch, vice-president of First Hawaiian Bank, is the club president.

### Oahu Country Club

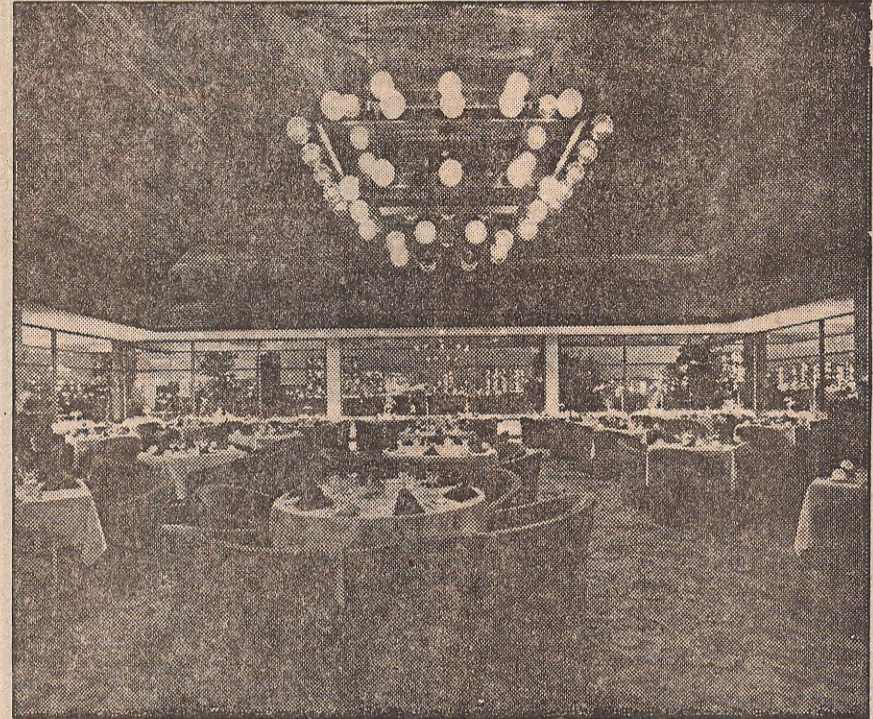
**R**EFUGE of kamaaina families, middle-aged members and old wealth, Oahu Country Club is considered the most exclusive of the four private golf clubs. Its big clubhouse at the top of Nuuanu Valley is the frequent site of old guard anniversary parties and their children's wedding receptions.

The initiation fee for a regular golfing membership is \$5,000, plus the purchase of a \$5,000 transfer certificate that can be sold at the member's resignation or death.

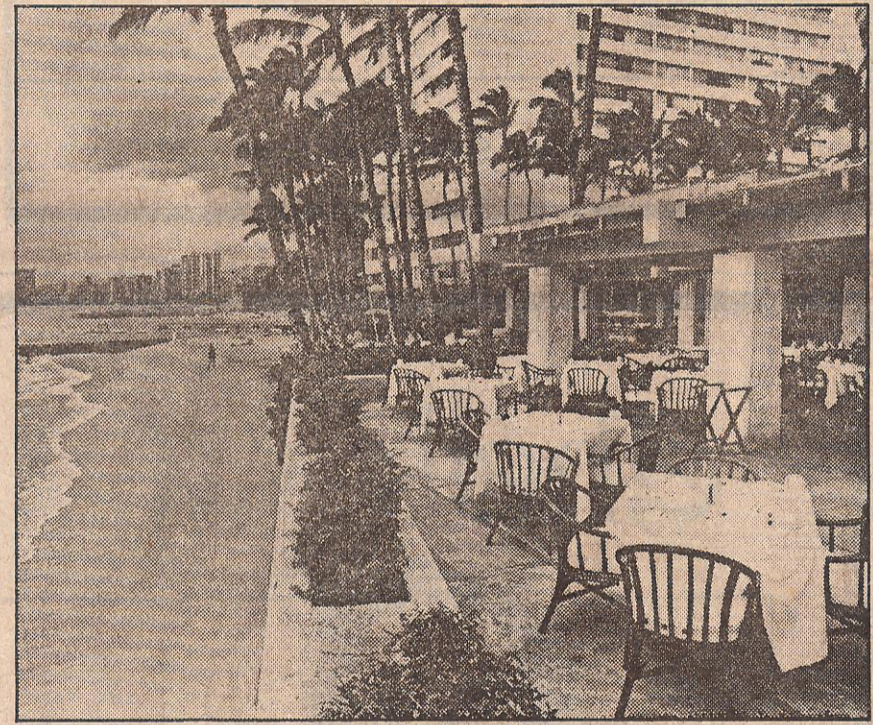
Monthly dues are \$71, plus a mini charge of \$21. This is not a minimum fee, as at other clubs, but more of a discount. To reduce it to \$5 a month, a member must spend \$50 at the club—the more he spends, the lower the mini fee.

The club course ambles around some very expensive real estate with a dramatic view of Honolulu, and other facilities include a swimming pool and private dining rooms.

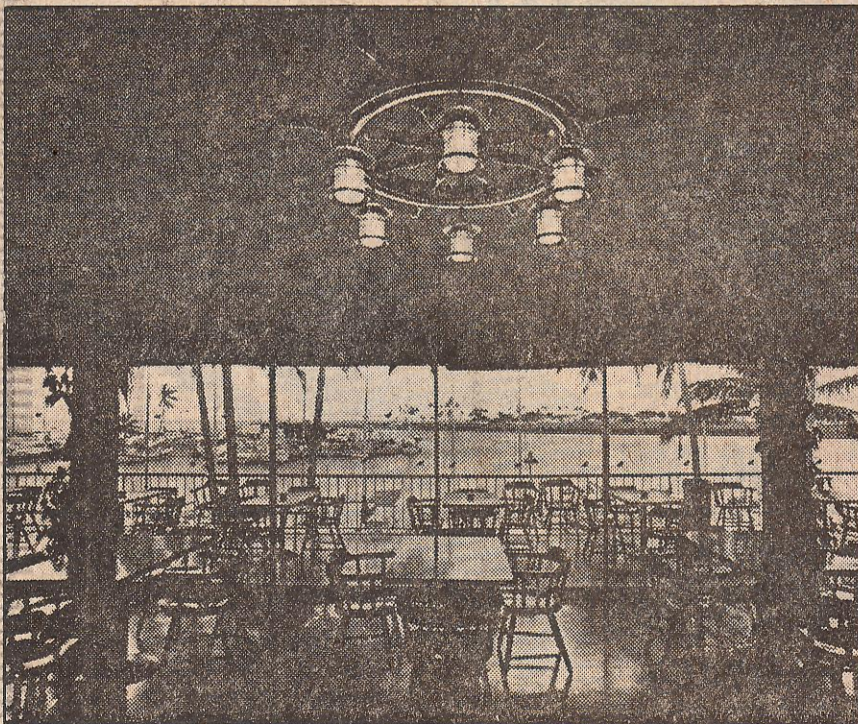
Lunch is served four days a week and dinner Wednesday through Sunday in the main dining room. The grill, with a more limited menu, serves lunch seven



Honolulu International Country Club dining room



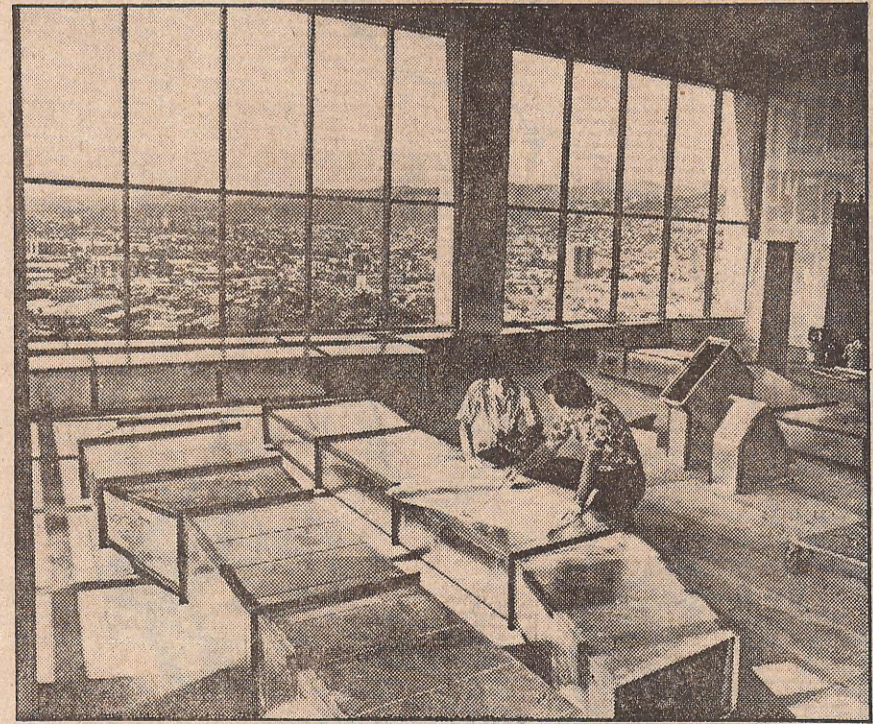
Outrigger Canoe Club lanai



Waikiki Yacht Club

Hawaii Yacht Club

Scale model of Honolulu Club



Above, Making plans for Plaza Club; Below, Pacific Club

